



Log Monitor & Export

<b>1</b>		<b>1</b>
1	O Log Monitor & Export .....	1
2	.....	2
<b>2</b>	,	<b>3</b>
1	.....	3
2	.....	4
3	.....	4
4	.....	5
<b>3</b>		<b>5</b>
1	.....	5
2	.....	5
<b>4</b>		<b>6</b>
1	.....	6
2	.....	7
3	.....	8
4	.....	9
5	.....	9
<b>5</b>		<b>10</b>
1	.....	10
	.....	10
	.....	12
	.....	14
	.....	16
2	.....	17
	.....	17
	.....	18
	.....	20
3	- .....	21
	- .....	21
	- .....	24
	.....	26
4	.....	27
	.....	27
	OPC .....	30
5	.....	35

**Windows 2000**

Windows Vista

**6**

**?**

**44**

1

# 1

## 1.1 O Log Monitor & Export

"log monitor"

### Log Monitor & Export:

- ;
  - ;
  - ;
  - / ;
  - ;
  - ;
  - ;
  - email, ICQ ;
  - - Microsoft Excel, Microsoft Word (RTF) Adobe PDF; ;
  - - (MSSQL, Oracle, ;
  - Interbase, .); ;
  - ; ;
  - ; ;
  - NT/2000/XP/Vista, x32, x64. Windows 9x/Me/ ;
- Windows. Log Monitor & Export Windows
- NT/2000/XP/Vista,
- Log Monitor & Export, !

- 
- 
- 
- 

: <http://www.aggsoft.ru/>  
 : <http://www.aggsoft.ru/log-monitor.htm>

## 1.2

**ASCII** - ASCII -  
 Windows  
 ASCII. ASCII \*.TXT ( README.TXT).  
**Binary File** - ASCII ( 0 255).  
**Bytes** ( ) -  
**Bit** ( ) - : 0 1. 8  
 8 ( )  
**Cable** ( ) -  
**Internet** ( ) - TCP/IP  
**PC** ( ) - Personal Computer ( )  
**Ports** ( ) -  
**Protocol** ( ) -  
**(Log file)** - ( . log) —

## 2

### 2.1

Copyright © 1999-2016 AGG Software.  
All Rights Reserved

1. Log Monitor & Export -
- 2.
3. Log Monitor & Export ,
- 4.
5. Log Monitor & Export  
sales@aggsoft.ru
6. Log Monitor & Export , ,  
Log Monitor & Export
7. **Log Monitor & Export "AS IS".**
- 8.

9. Log Monitor & Export

10. -  
Log Monitor & Export  
Log Monitor & Export.

## 2.2

shareware-

4

- 21
- 

## 2.3

shareware-

3

Internet,

## 2.4

Log Monitor & Export	<a href="mailto:support@aggsoft.ru">support@aggsoft.ru</a>
	<a href="mailto:support@aggsoft.ru">support@aggsoft.ru</a>
	<a href="mailto:sales@aggsoft.ru">sales@aggsoft.ru</a>

## 3

### 3.1

- Windows 2000 Professional SP 4;
- Windows 2000 Server;
- Windows XP x86 x64;
- Windows 2003 Server x86 x64;
- Windows Vista ( ) x86 x64.
- Windows 7 ( ) x86 x64.
- Windows 2008 Server ( ) x86 x64.
- Windows 8 ( ) x86 x64.

### 3.2

Log Monitor & Export.

Export" , Log Monitor & Export "\Programs Files\Log Monitor &  
 ,  
 Log Monitor & Export ,  
 \_\_\_\_\_.



## 4

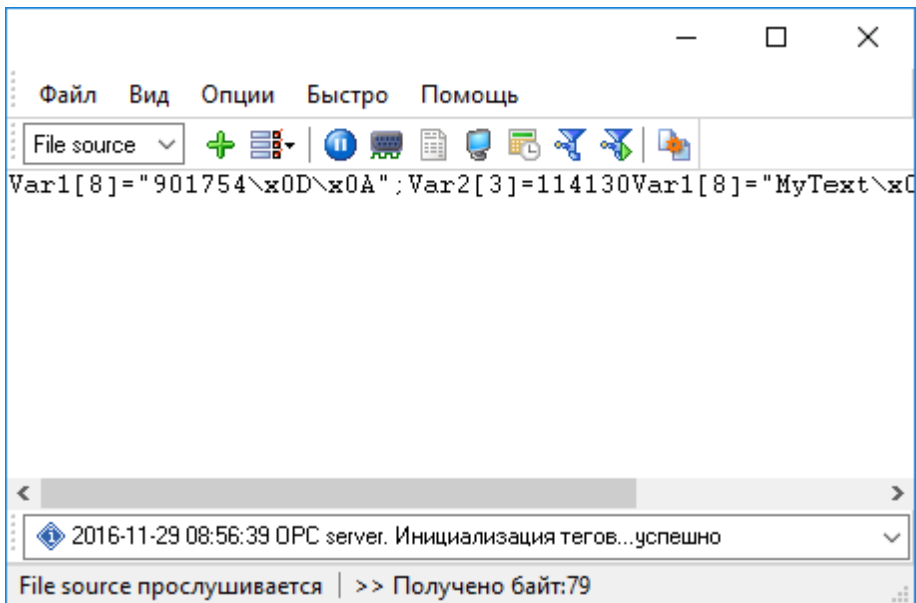
## 4.1

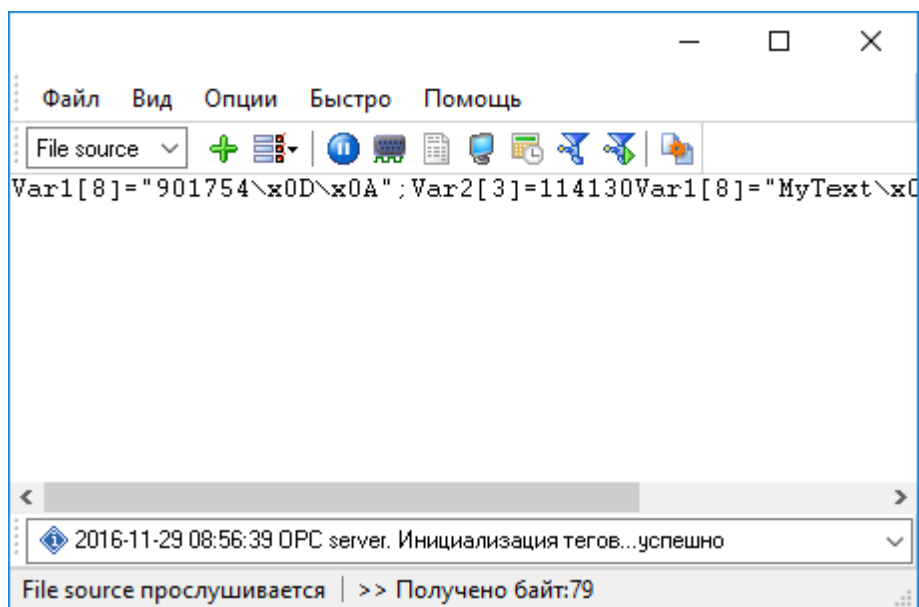
## Log Monitor &amp; Export

## Log Monitor &amp; Export

" "

(. 1.1.1),

1.1.2)  (" ..."), " "



. 1.1.1.

- Просмотреть текущий лог-файл
- Показать протокол сообщений программы
- Создание резервной копии конфигурации
- Загрузка резервной копии конфигурации
- Выход

. 1.1.2.

" "

C:\. ,  
\_\_\_\_\_ [7]

**1-2-3-4**

1.

" " " "

2.

( ).  
" " (

3.

\_\_\_\_\_  
" " , ,

4.

Log Monitor & Export

Log Monitor & Export

**4.2**

\_\_\_\_\_  
\_\_\_\_\_ [21]

\_\_\_\_\_ [24]

(. 1.1.1 [6]).

Log Monitor & Export

" \_\_\_\_\_ [17]"

\_\_\_\_\_ [35]

Monitor & Export [Log Monitor & Export. Log \(plug-ins\),](#)

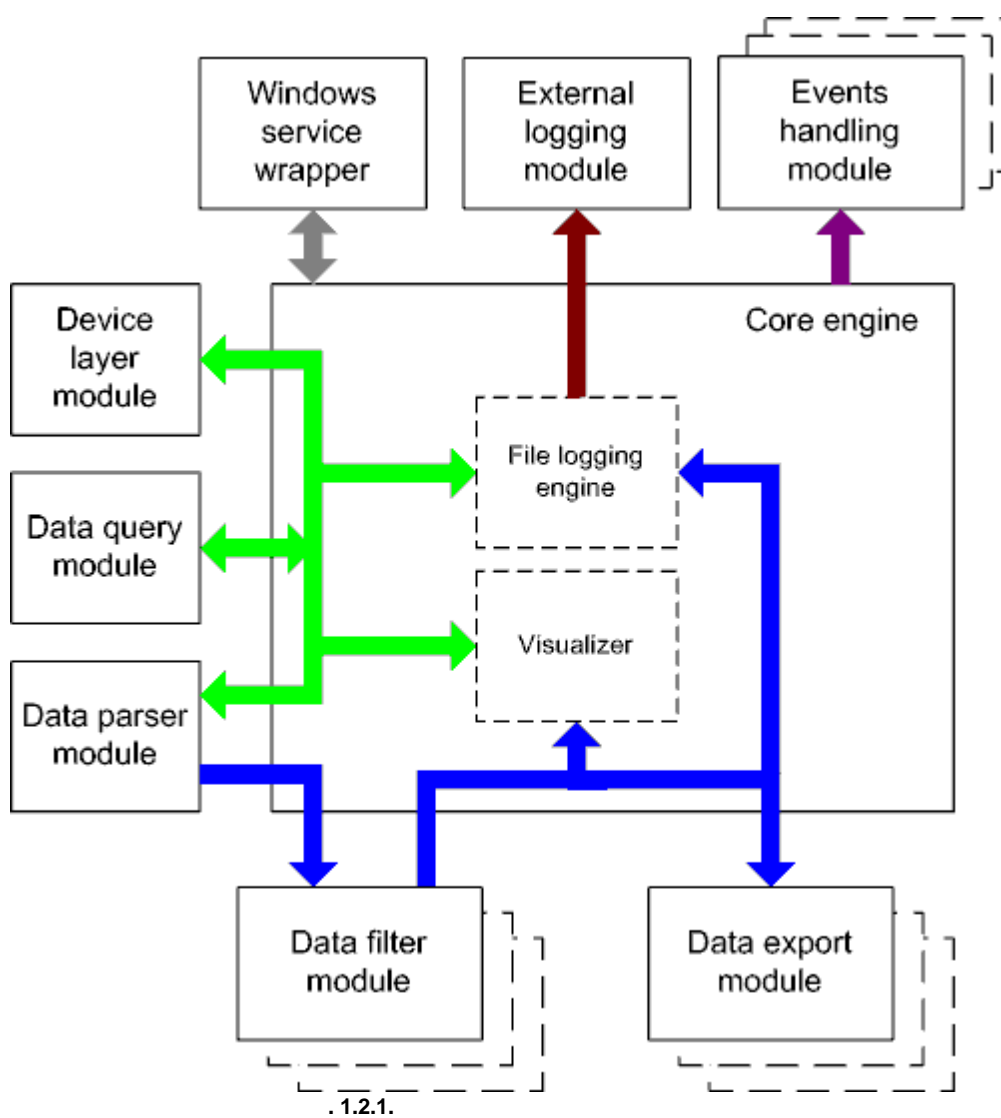
[" \(plug-ins\).](#)

[\(1.1.1.1\)](#)

[\(38\)](#)

),

### 4.3



- :
- - ( ).
  - - ( ).
- ,
- Core engine -
  - Device layer module -
  - Data query module -
  - Data parser module -
  - Data filter module -
  - Data export module -
  - Visualizer -
  - File logging engine -
  - Windows service wrapper -
  - External logging module -
  - Events handling module -

## 4.4

Windows.

## 4.5

1.

2.

1.

2.

regedit.exe

Windows x64

HKEY\_LOCAL\_MACHINE\SOFTWARE\Wow6432Node\AGG Software\Log Monitor & Export

Windows x32

HKEY\_LOCAL\_MACHINE\SOFTWARE\AGG Software\Log Monitor & Export

3. " "
  - :
  - Ctrl+S - " / " ;
  - Ctrl+D - " / " ;
  - Ctrl+P - ;
  - Ctrl+L - log- ;
  - Ctrl+R - ;
  - Ctrl+E - Windows;
  - Ctrl+M - , .
4. , .
5. INI .
6. " " .
- 10 , .

## 5

### 5.1

#### 5.1.1

( . log) —

, —

( ) ,

( , , ), .

( )

email.

1. "
2. "

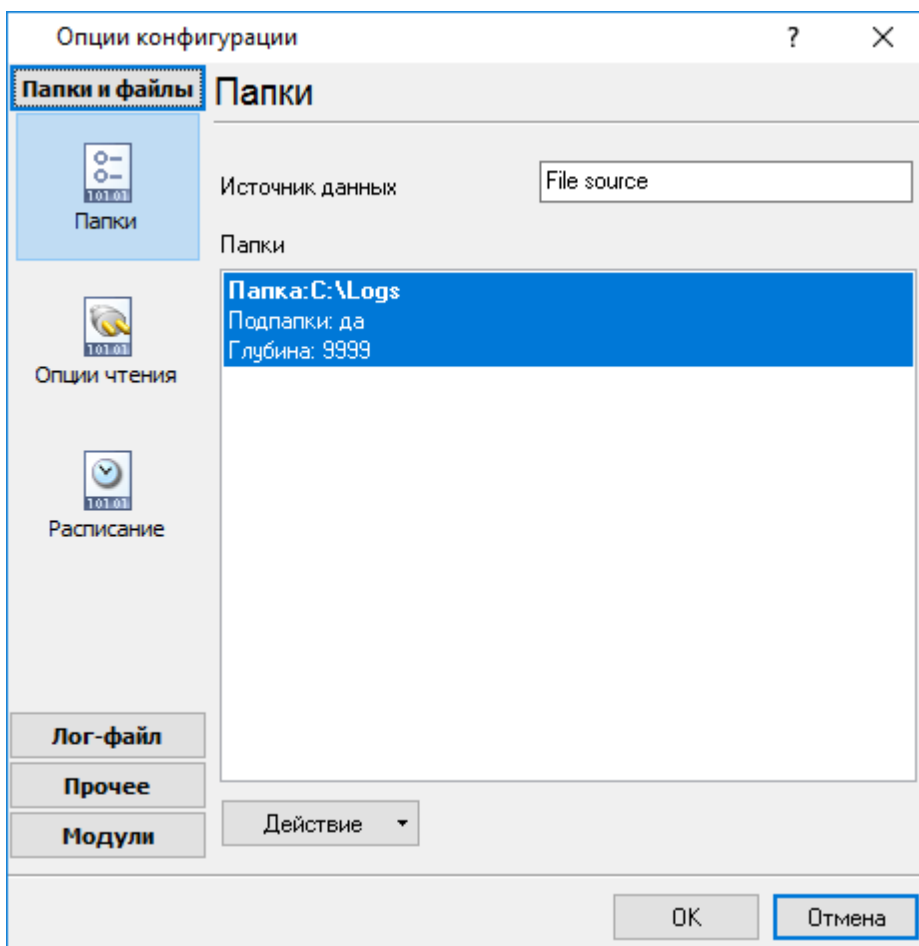
( "14").

1. ;
2. ;
3. ;

"\*.txt",

5.1.2

" " ( .1).



.1.

- Data source #XXX, XXX -

( .2).

Добавить

Удалить

Правка

Вверх

Вниз

Reset file positions

.2.

( .3).

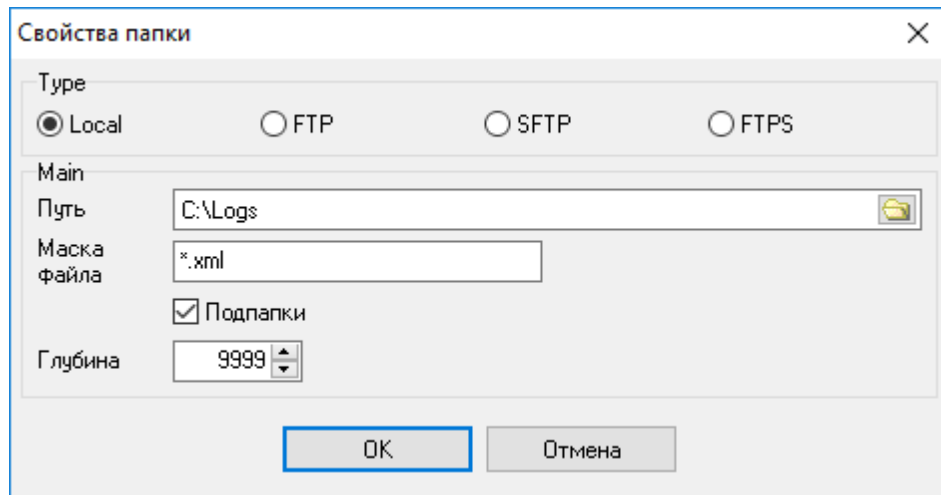
OK -

"Yes" ( )

"No" ( ) -

( .3).

OK



.3.

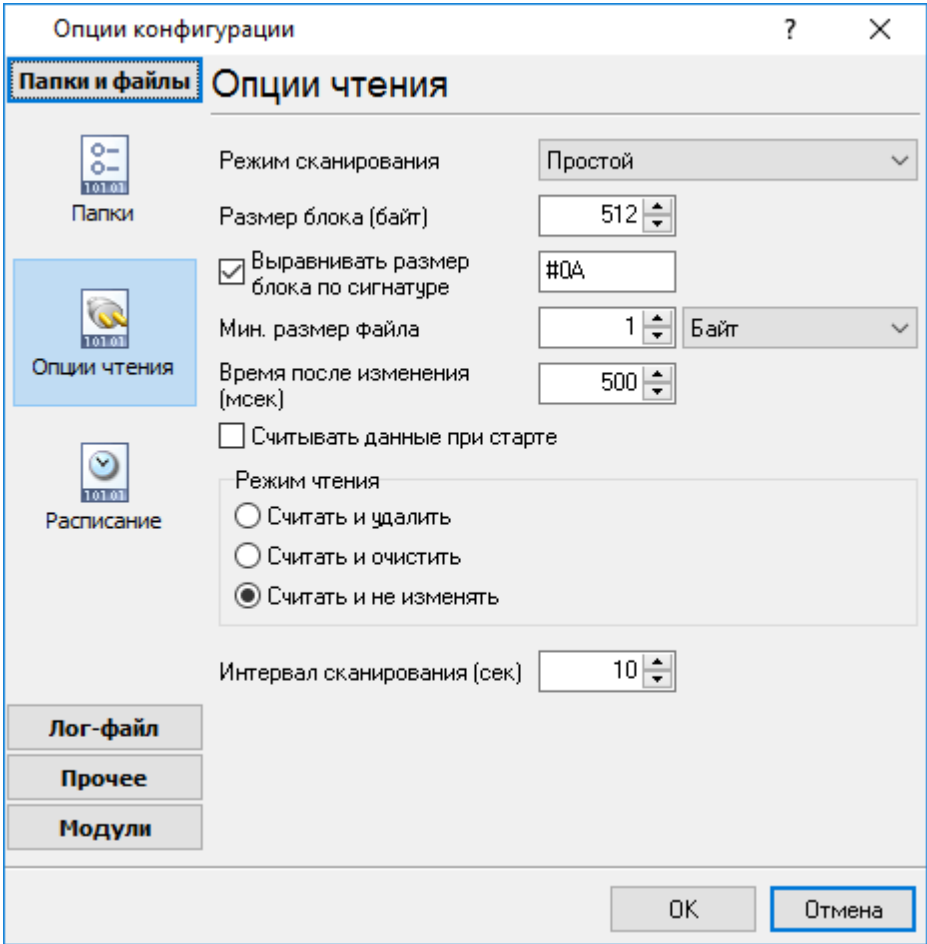


- 9999.

:  
C:\Files\Data\Test -  
C:\Files\Data\Test\Folder0 - 1  
C:\Files\Data\Test\Folder0\Folder1 - 2

5.1.3

( . 1).

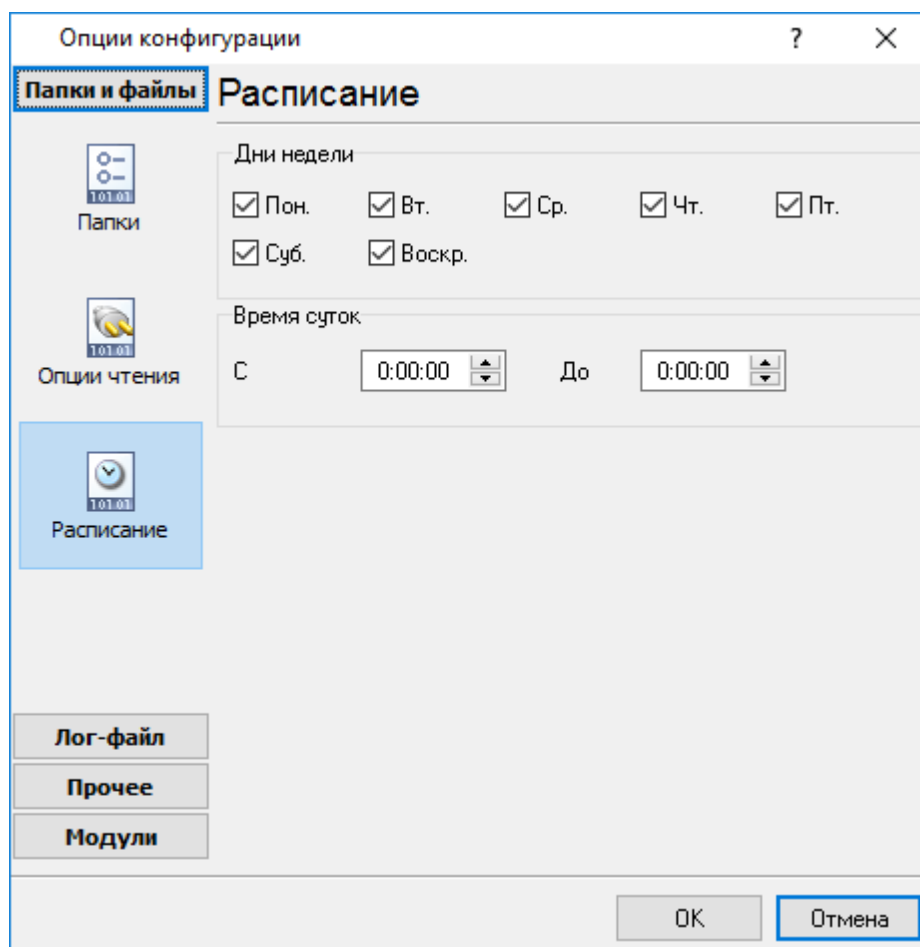


. 1.



## 5.1.4

" ( .1). "



.1.

- 1.
- 2.

0:00:00-0:00:00,

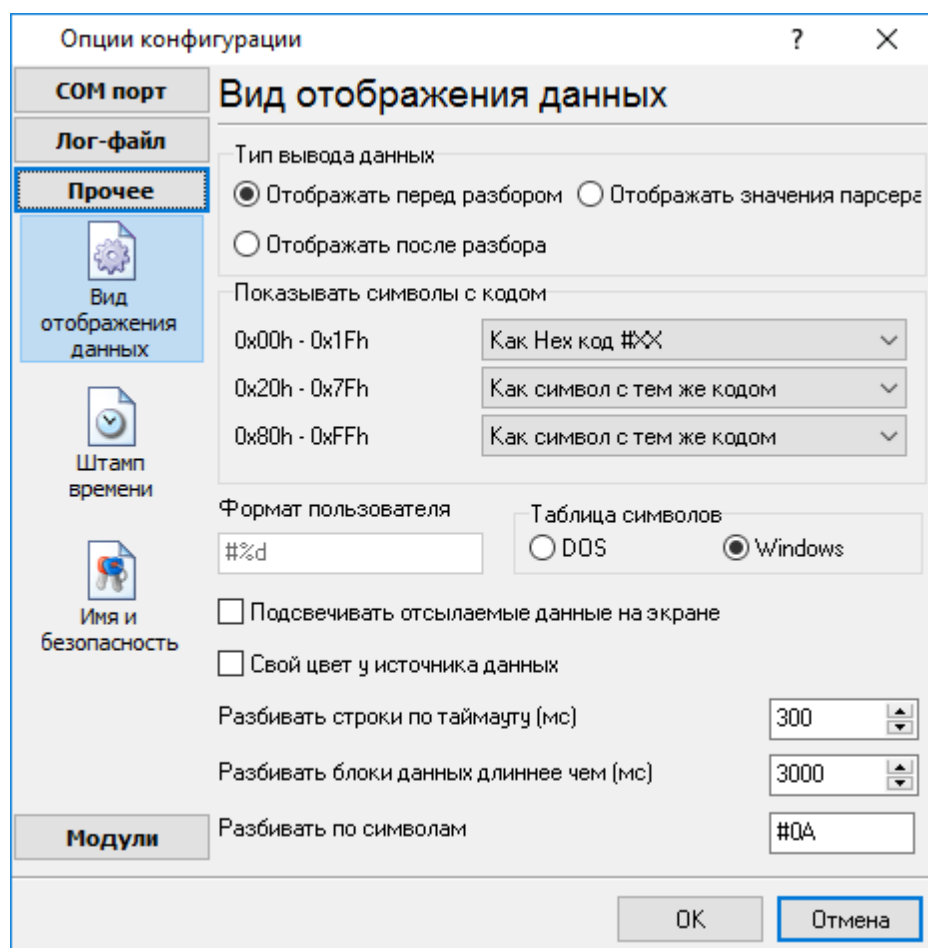
## 5.2

## 5.2.1

3.1.1):

1.

2.



. 3.1.1.

"

-

" ( . 3.1.1)

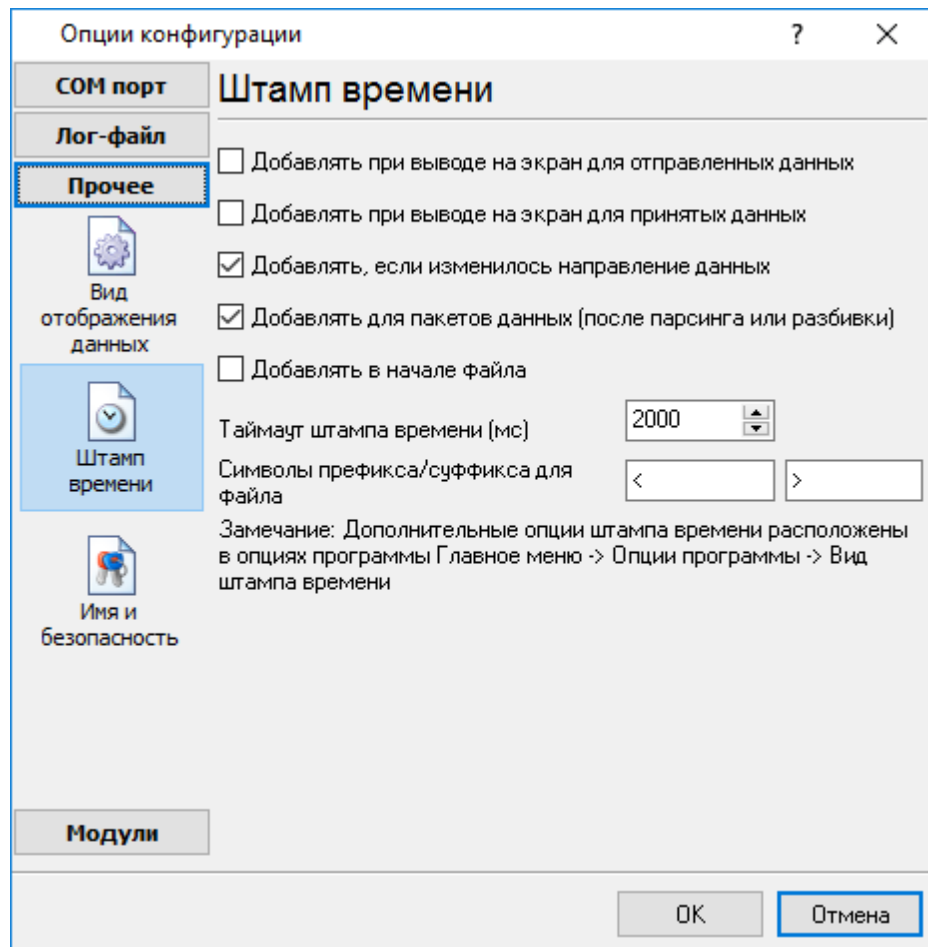
:

Hex-  
%d , %x -  
(OEM). : Windows DOS  
0,  
0,  
. 3.1.1

5.2.2

( . 3.2.1) ( )

           37.



. 3.2.1.

:>#0D#0A

### 5.2.3

( . 3.3.1)

:

-

.

-

,

"

"

43

,

"

/

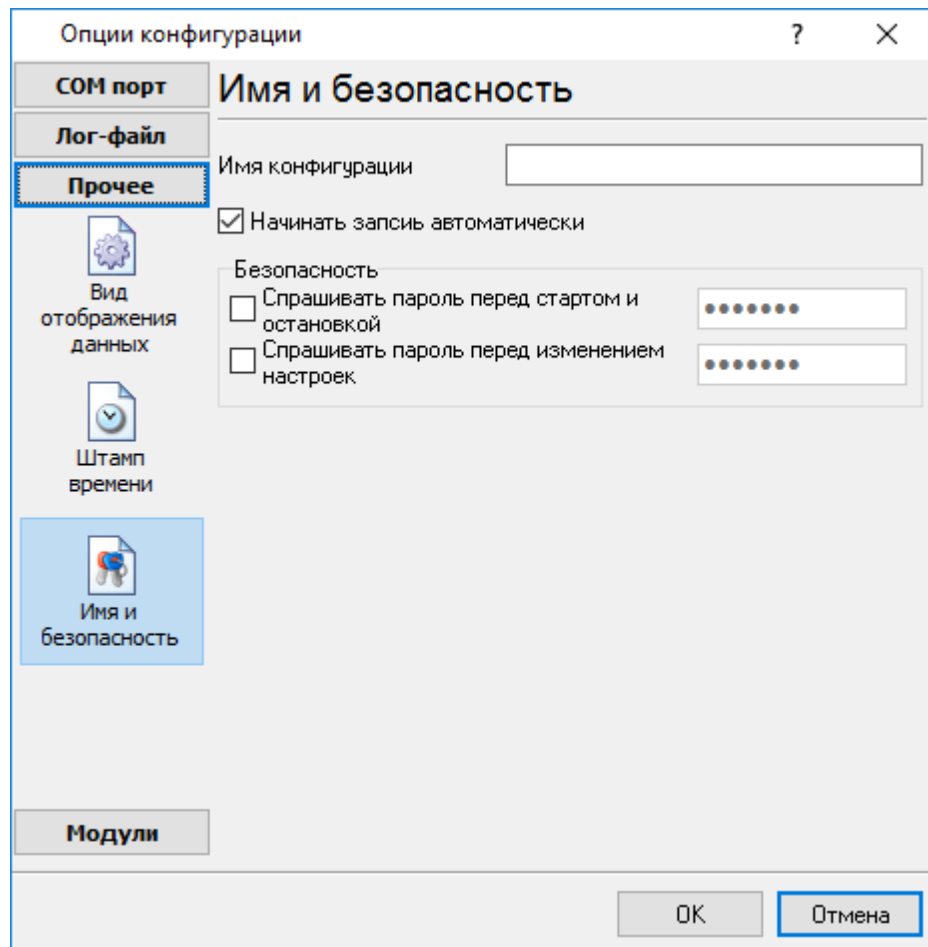
"

-

,

-

,



. 3.3.1.

## 5.3

-

## 5.3.1

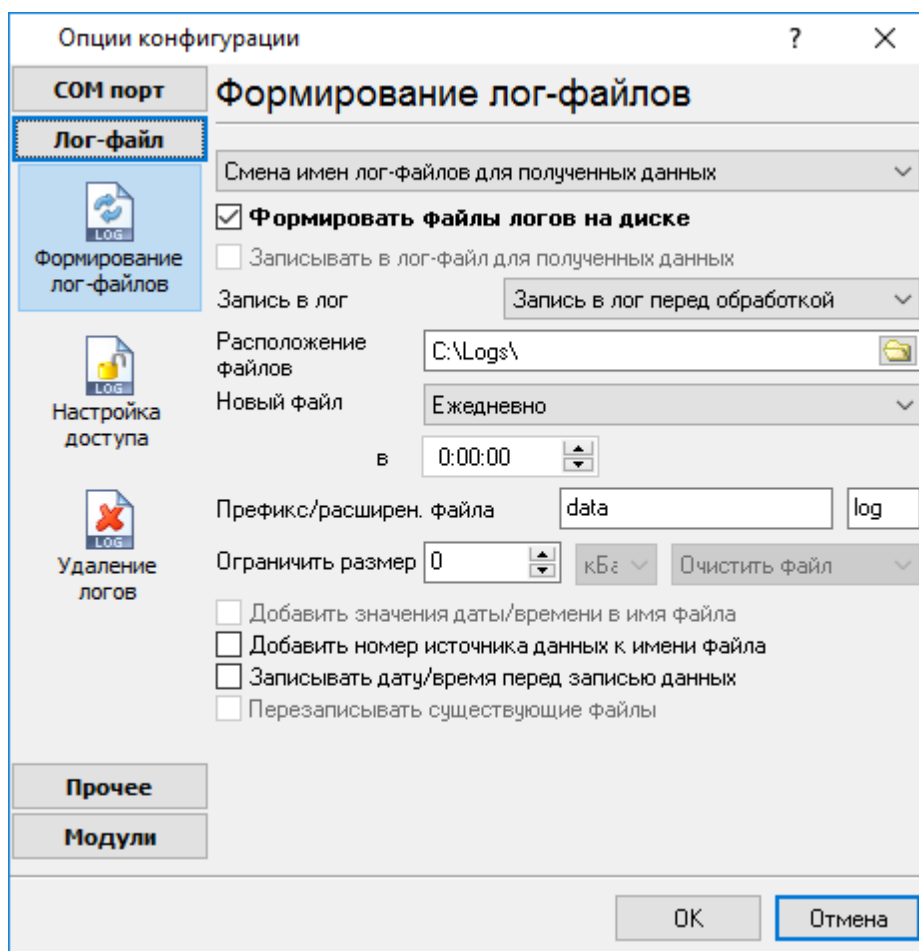
-

-

( . 4.1.1).

- ( ).





. 4.1.1.

"OK".

Log Monitor & Export

"sample",

"log ",

```

"sampleYYYYMMDD.
log". 21- 2003 - "sample20030321.log".
( ).
, , , .
" " :
1. - , .
DDMMYYYY, DD - , MM -
YYYY - ;
2. - .
MMYYYYY;
3. -
YYYYMMDD;
4. -
, . : sample00000001.log.
5. - ;
6. - .
WWYYYYY, WW -
, YYYY -
7. ;
8. - .
HHDDMMYYYYY;
9. - -
, .
:
d - , (1 - 31);
dd - , (01 - 31);
ddd - ( - )
;
dddd - ( - )
;
m - , (1 - 12);
mm - , (01 - 12);
mmm - ( - )
;
mmmm - ( - )
;
yy - (00 - 99);
yyyy - (0000 - 9999);
h - , (0 - 23);

```

```

hh - , (00 - 23);
n - , (0 - 59);
nn - , (00 - 59);
s - , (0 - 59);
ss - , (00-59).

```

```

: "sample_log", "txt".
: = sample_log_, = txt ( !).
HHDDMMYYYY.

```

4 7 /

sample20030321.log.

/

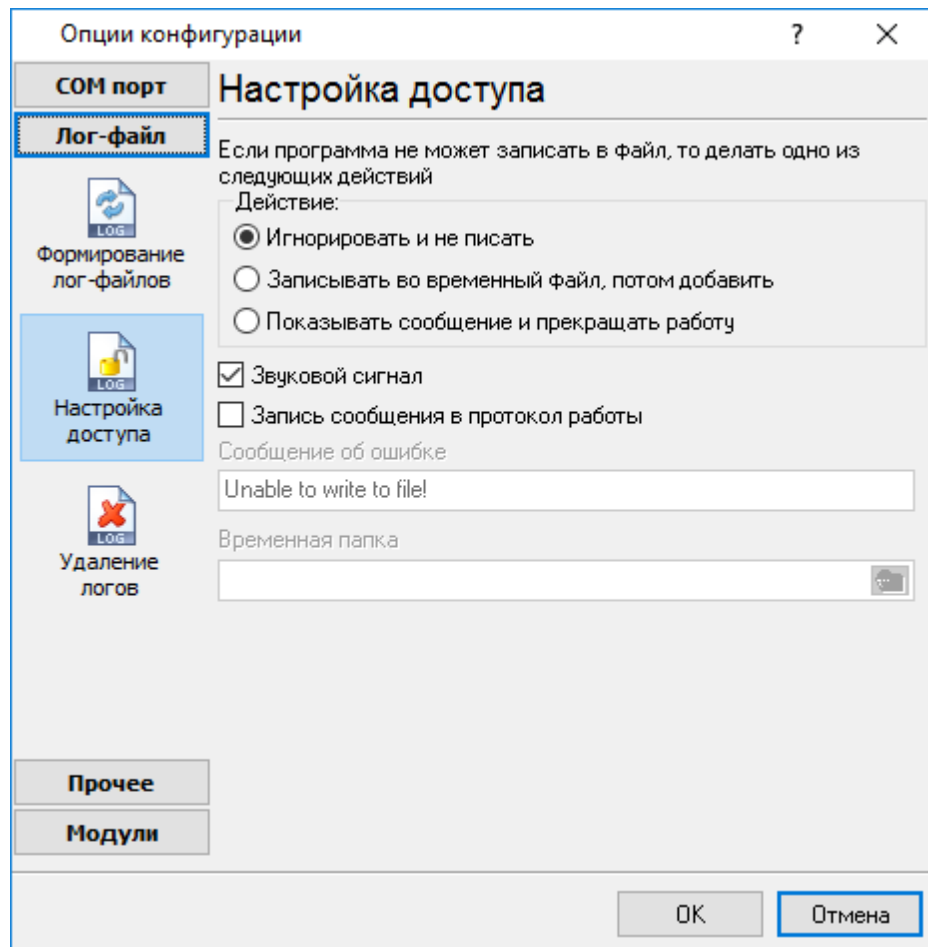
, COM1-

4 7.

1. !
2. -
3. ( ) -
4. ( ).

### 5.3.2

Microsoft Office ( , Microsoft Word),  
Log Monitor & Export



. 4.2.1.

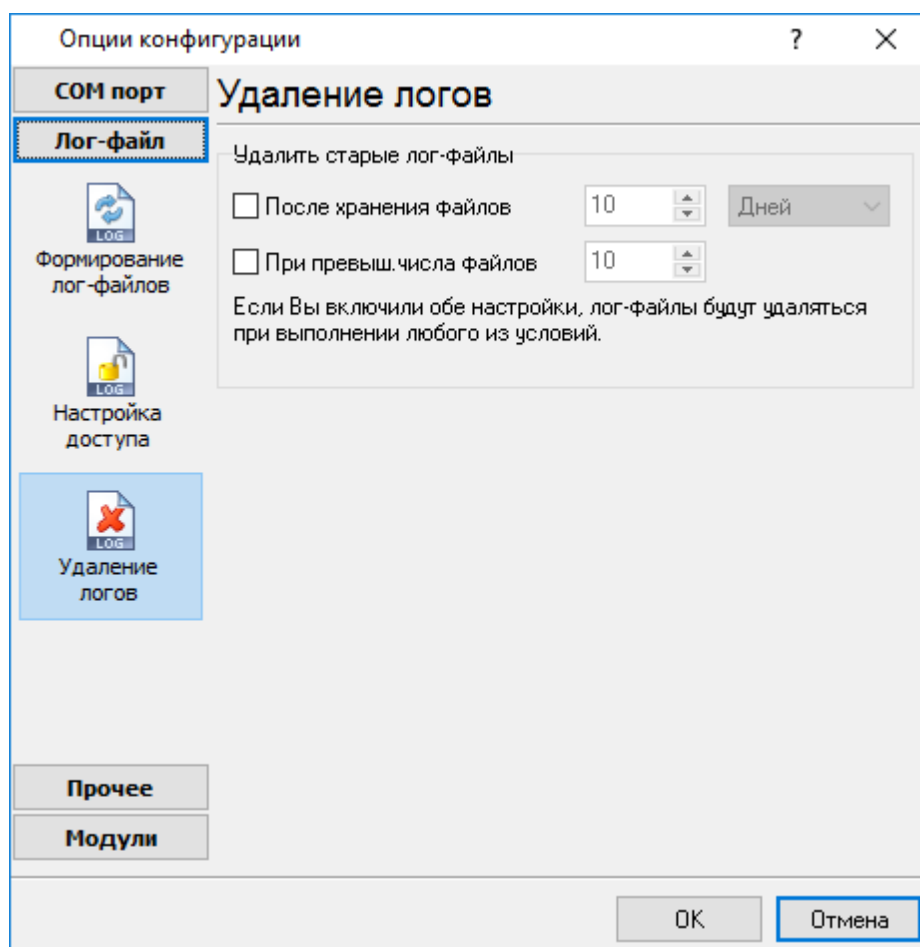
Log Monitor & Export

( . 4.2.1),

- 
- 
-

## 5.3.3

(рис. 4.3.1).



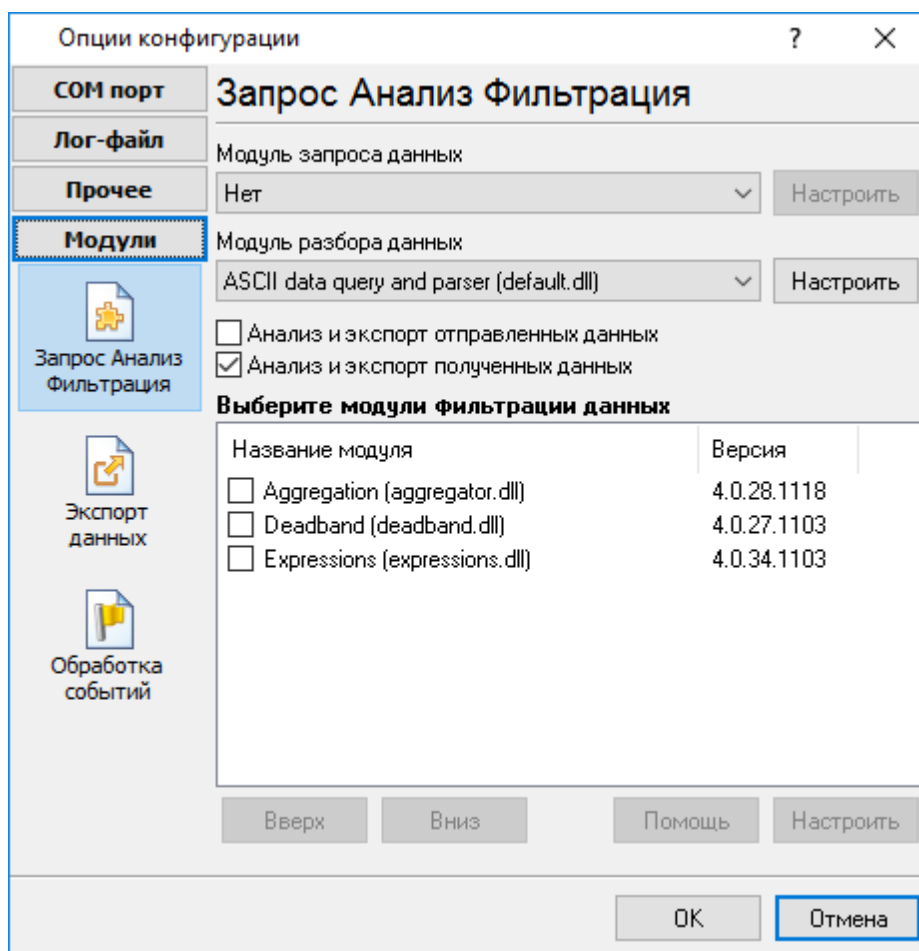
. 4.3.1.

## 5.4

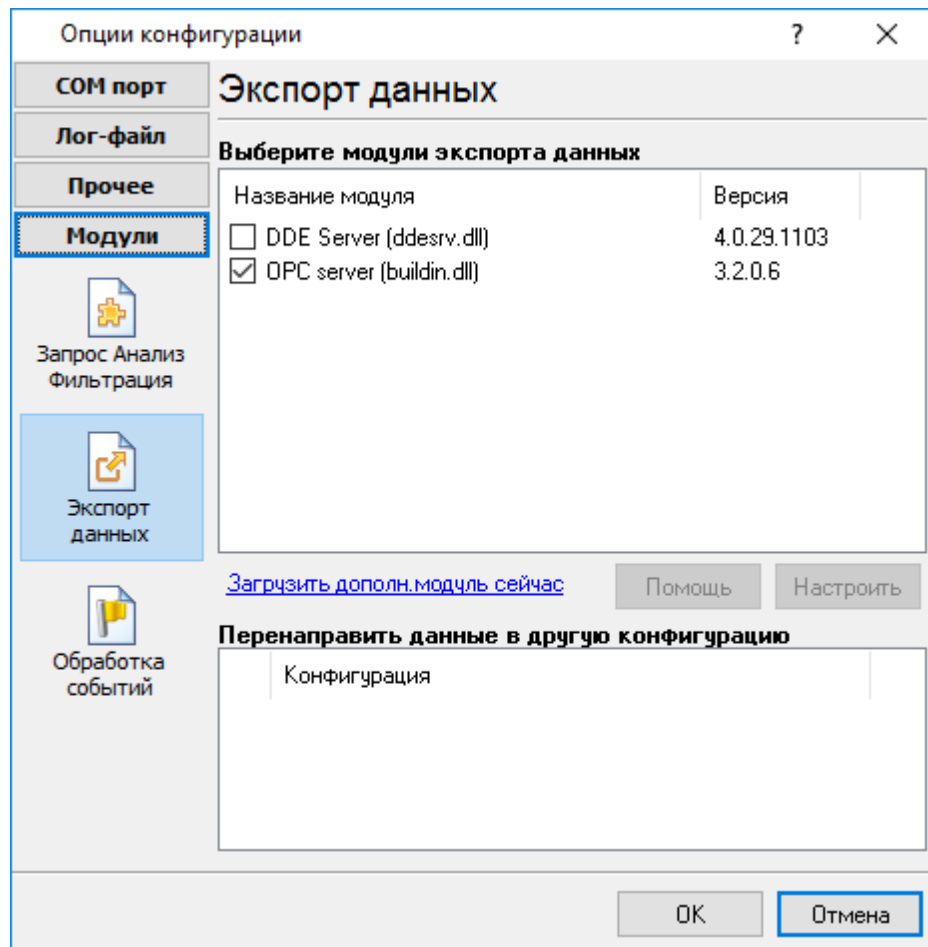
### 5.4.1

Log Monitor & Export :

- ( , , ) - ( )
- - ;
- - ;
- , Excel ;
- ( . 5.1.3) - Log Monitor & Export. , " - " "

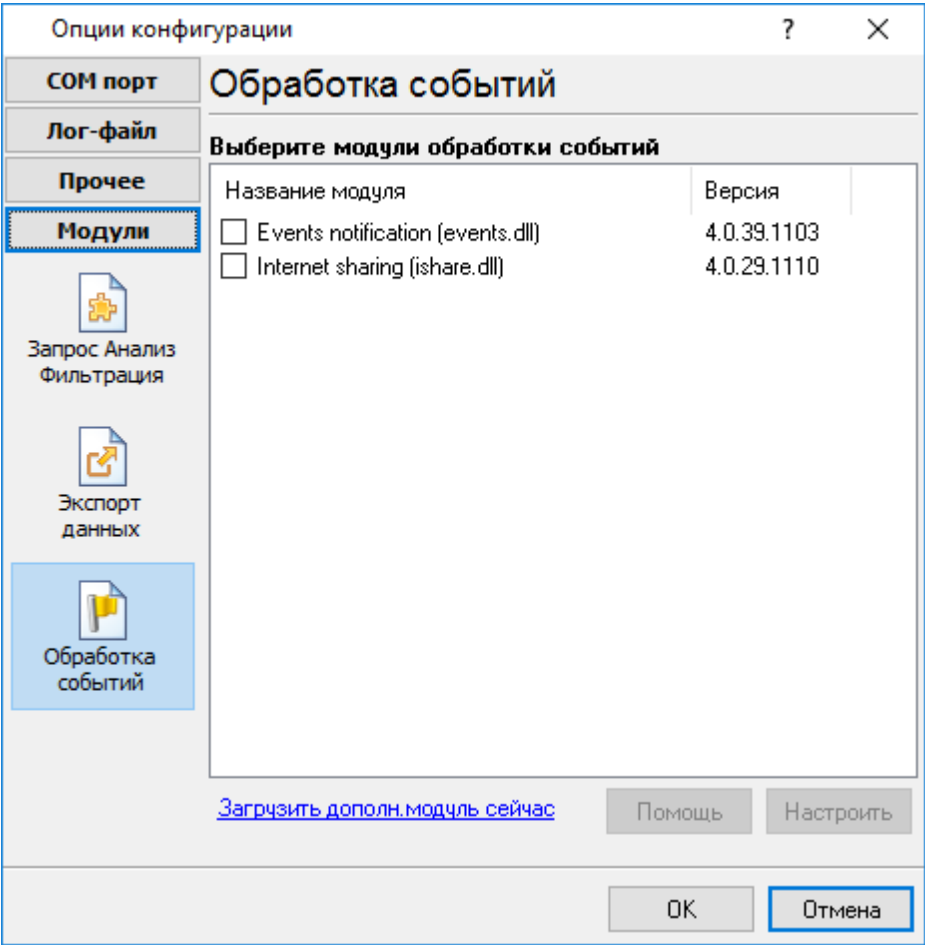


. 5.1.1.



. 5.1.2.





. 5.1.3.

"OK".

### 5.4.2 OPC

Log Monitor & Export

OPC OPC.

Log Monitor & Export

( . 5.2.1).

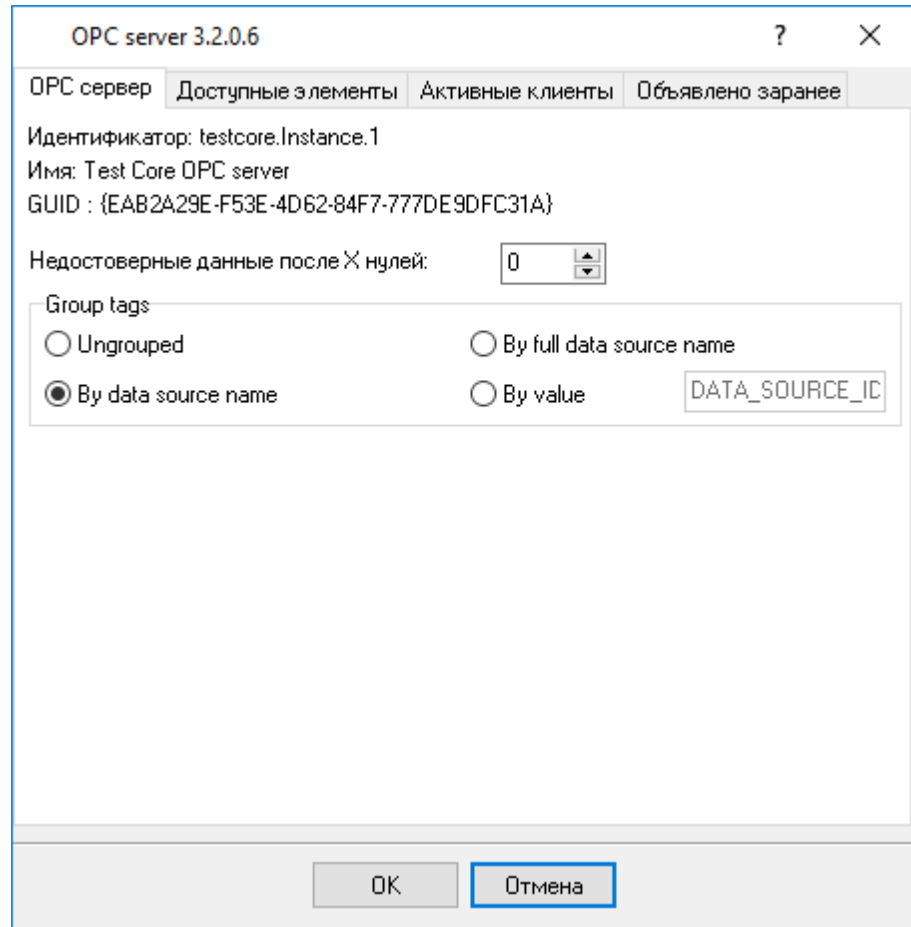
OPC

OPC Core Components Redistributable  
)

[www.opcfoundation.org](http://www.opcfoundation.org) (

OPC

OPC



. 5.2.1.

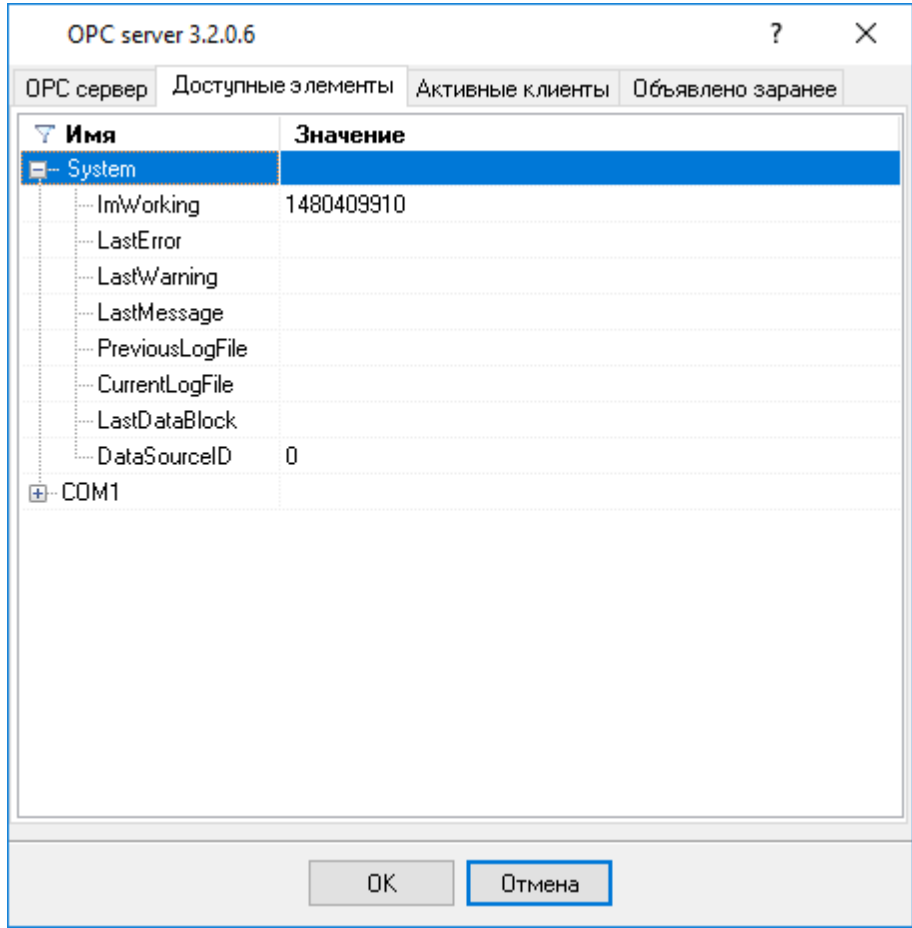
OPC

Log Monitor & Export,

OPC

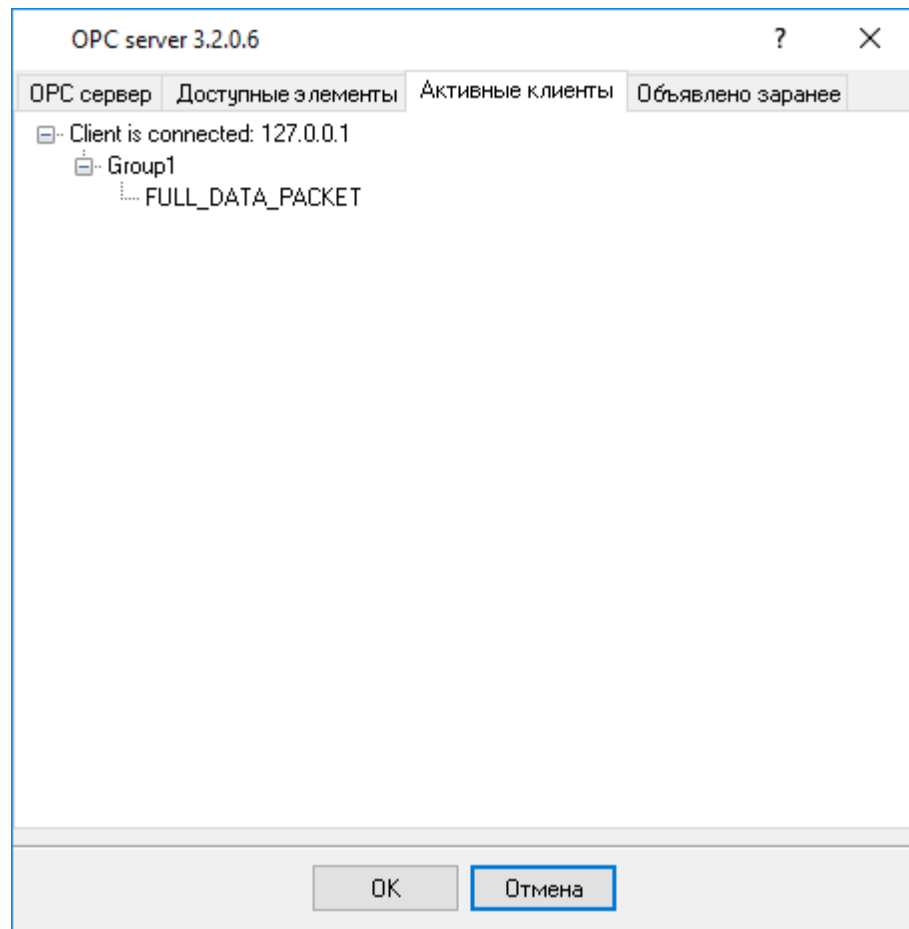
( .2).

OPC



. 5.2.2.

OPC



. 5.2.3.

Log Monitor & Export

"

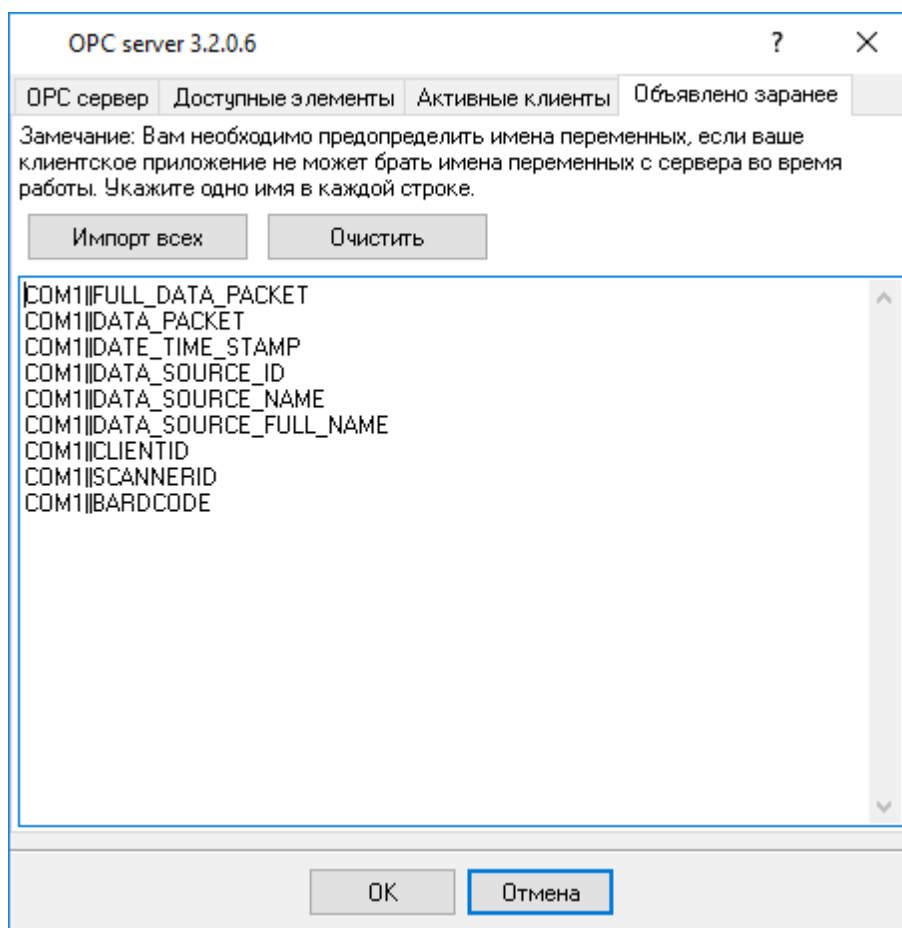
". Log Monitor & Export

OPC

( .4).

OPC

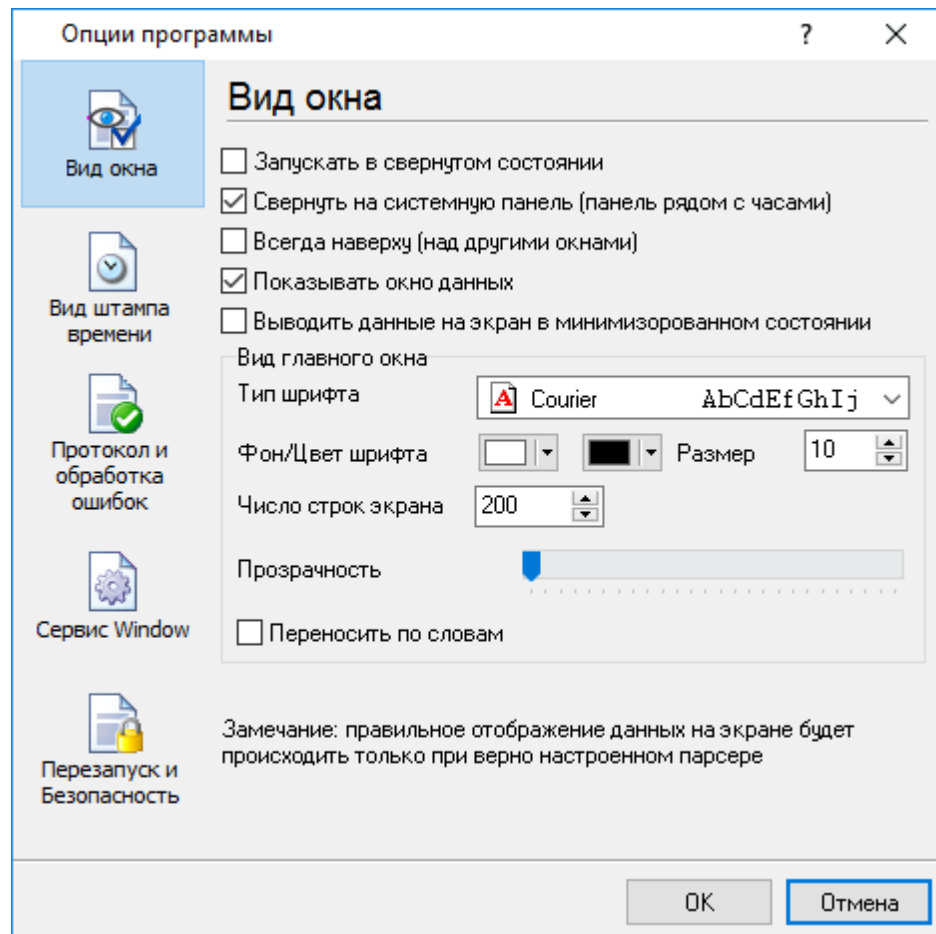
OPC



. 5.2.4.

## 5.5

## 5.5.1



. 6.1.1.

" ( . 6.1.1) :

- Log Monitor &amp; Export

( . 6.1.2) ;



. 6.1.2.

-

( . 6.1.2) -

Log Monitor & Export

;

;

-

/

;

);

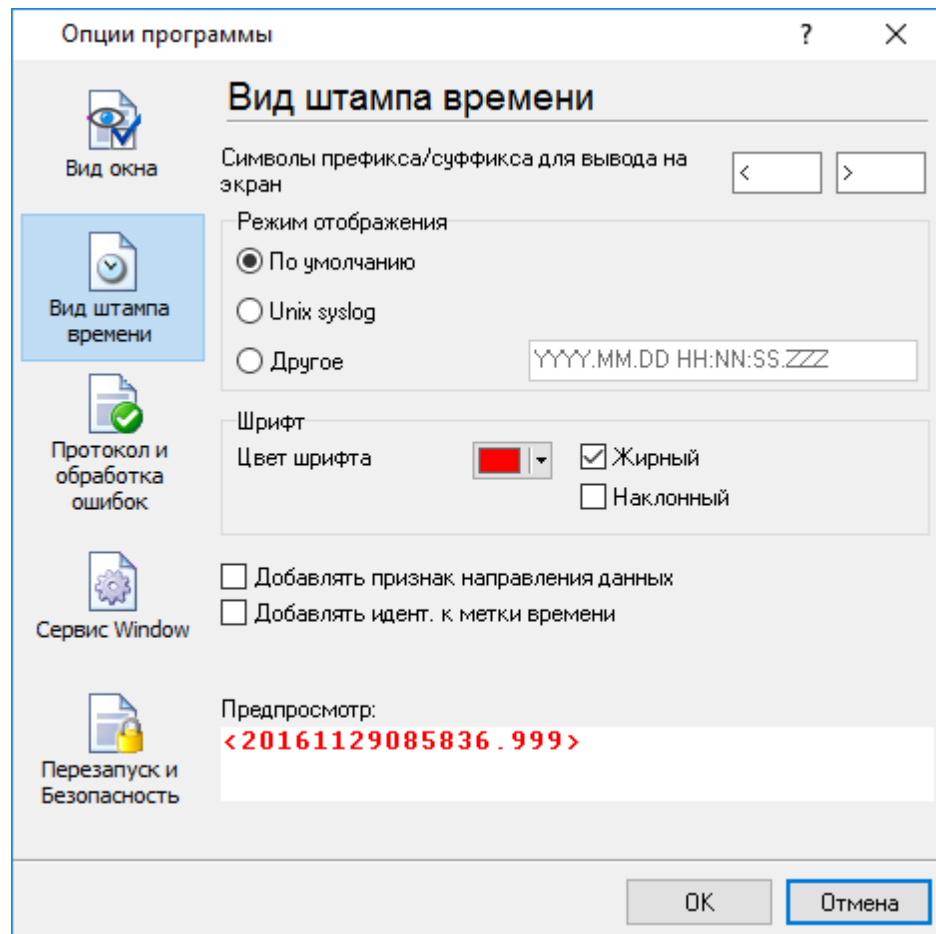
( , ,

- Windows 2000

;

## 5.5.2

( . 6.2.1)



. 6.2.1.

18

TX

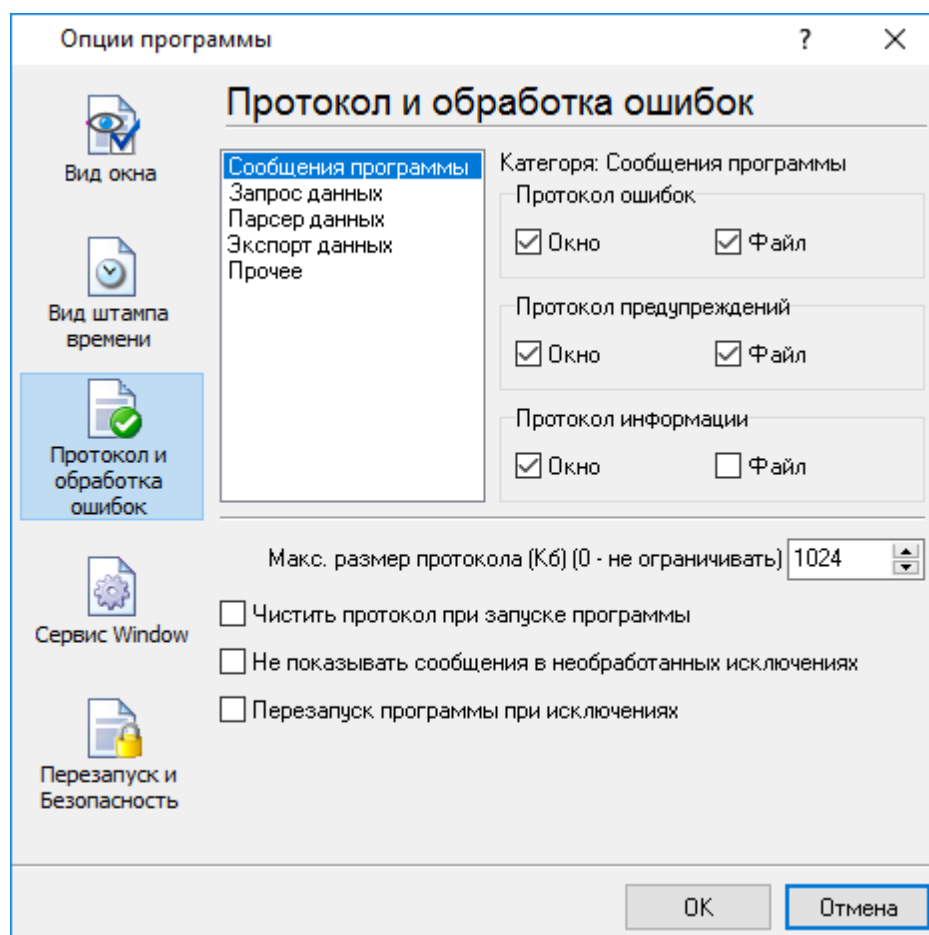
RX

, COM1.



## 5.5.3

.log.



. 6.3.1.

Log Monitor & Export

3-

- ;
- ;
- ;

- ; - , ' ,
- - , ;
- - , ;
- - , ;

Monitor & Export , Log

**5.5.4**  
**5.5.4.1**

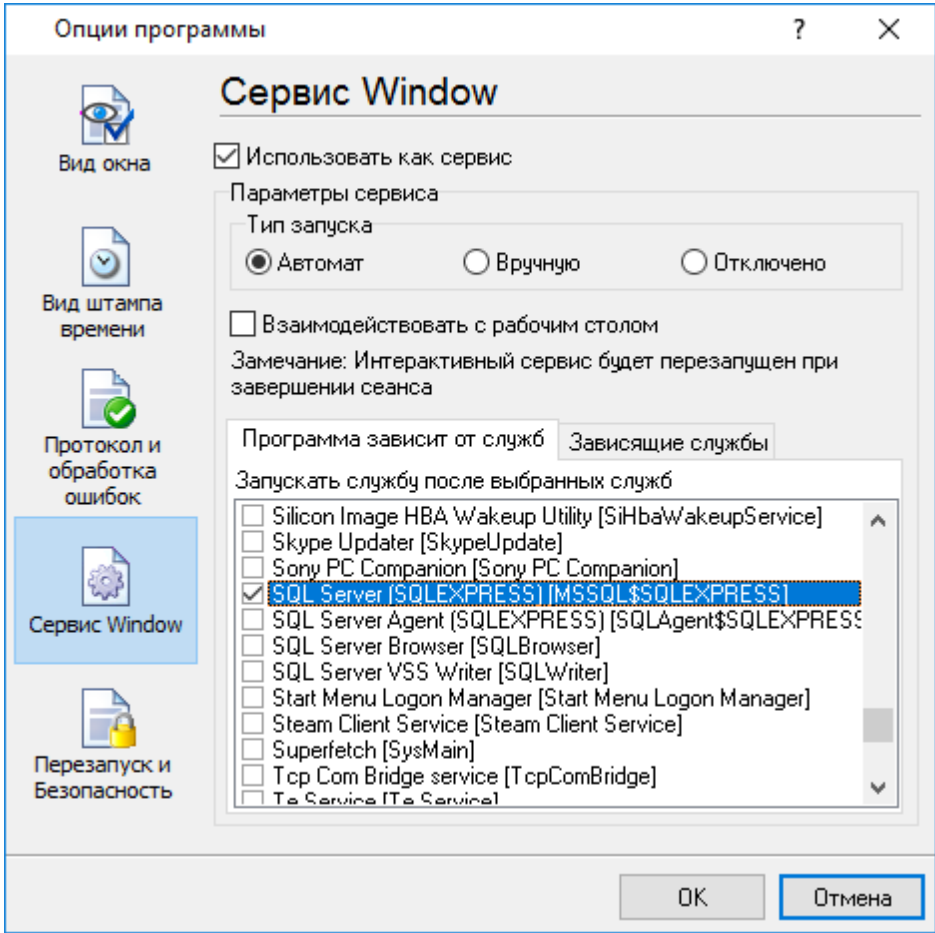
**Windows 2000**

( ) Windows :

- 2000 ); ( ' Windows
- - ( );
- ;
- 

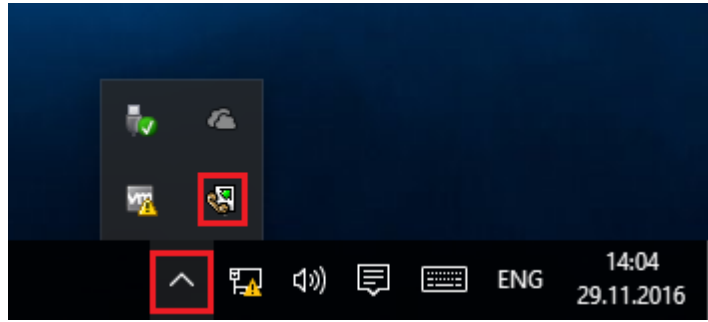
); ( Windows Vista (elevated) .

" " " Windows" ( . 6.4.1).



. 6.4.1.

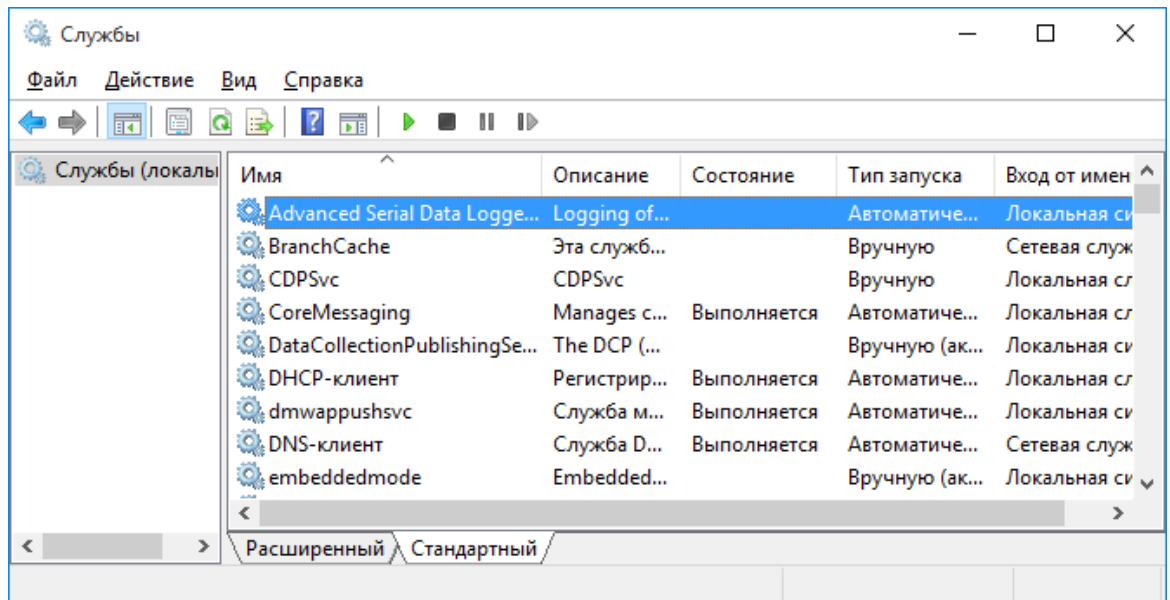
1. - Windows
  2. - ; " " ;
  3. - .
- " .  
 ( . 6.4.2).  
 ", . . Windows



. 6.4.2

Log Monitor & Export, " ( . 6.4.1)

( . 6.4.3).



. 6.4.3.

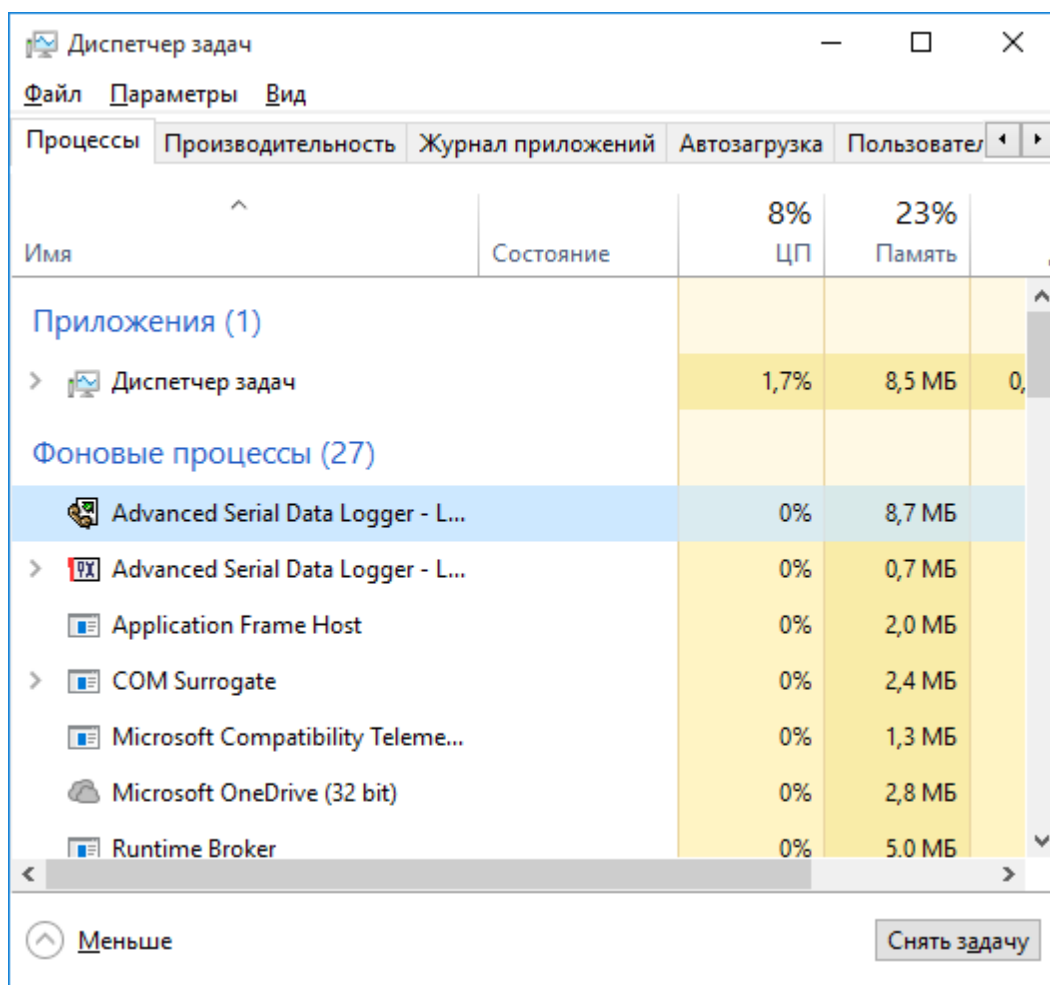
( Windows 2000)

exe ( . 6.4.4).

Log Monitor & Export  
Log Monitor & Export,  
svany.exe

2

- logmonitorsrv.exe logmonitor.



. 6.4.4.

logmonitorsrv.exe :

- /? - ;
- /I - ;
- /A - ;
- /D - ;
- /R -

#### 5.5.4.2

#### Windows Vista

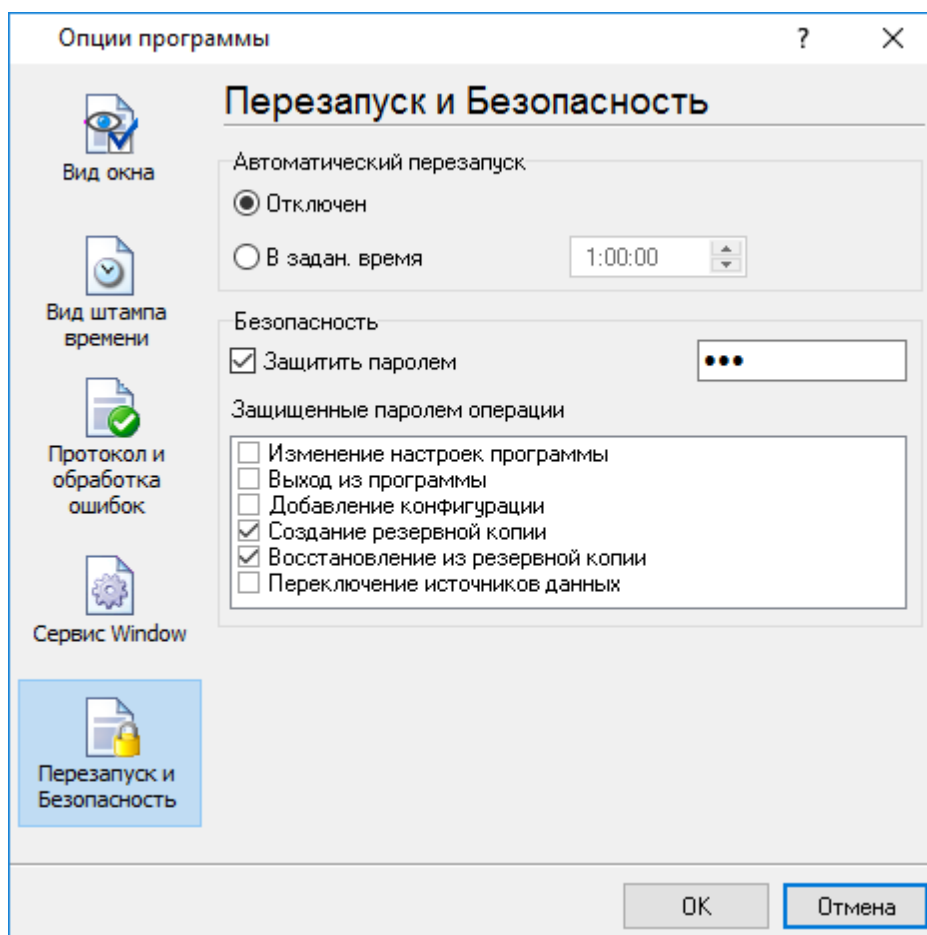
Windows Vista

Windows.

- : Interactive Services Detection
  - : UIODetect
  - : UIODetect.exe
  - :
  - : %windir%\system32\UIODetect.exe
  - :
- \* Home Basic:  
\* Home Premium:  
\* Business:  
\* Enterprise:  
\* Ultimate:

## 5.5.5

( . 6.5.1).



. 6.5.1.

" "

6

?

6.1

SoftIce

[support@aggsoft.ru](mailto:support@aggsoft.ru)