

## Advanced OPC Data Logger

<b>1</b>		<b>1</b>
1	Advanced OPC Data Logger .....	1
2	.....	2
<b>2</b>		<b>4</b>
1	.....	4
2	.....	5
3	.....	5
4	.....	6
<b>3</b>		<b>6</b>
1	.....	6
2	.....	6
<b>4</b>		<b>7</b>
1	.....	7
2	.....	8
3	.....	10
4	.....	11
5	.....	11
<b>5</b>		<b>12</b>
1	OPC .....	12
	OPC .....	12
	"Cron" .....	22
2	.....	24
	.....	24
	.....	25
	.....	27
3	- .....	28
	- .....	28
	- .....	31
	.....	33
	CSV - .....	34
4	.....	34
	.....	34
5	.....	38
	.....	38
	.....	40





- ; ,
  - ;
  - ;
  - Windows 9x/Me/ NT/2000/XP/Vista, x32, x64.
  - Windows. Advanced OPC Data Logger Windows NT/2000/XP/Vista,
  - !
  - Advanced OPC Data Logger,
  - !
- : <http://www.aggsoft.ru/>  
: <http://www.aggsoft.ru/opc-data-logger.htm>

## 1.2

- ASCII** - ASCII -
- Windows  
ASCII. ASCII \*.TXT ( ,  
README.TXT).
- Binary File** - ASCII ( 0 255).
- Bytes** ( ) - , ,
- Bit** ( ) - : 0 1. 8  
8 ( ) .
- Cable** ( ) - ,
- Client/Server** ( / ) - ,  
( , , . . )  
( ).
- DA (data access)** - .
- DNS (Domain Name System)** - DNS  
( TCP/IP ) IP . DNS  
( ) IP . [www.aggsoft.com](http://www.aggsoft.com)

198.63.211.24.

**Internet** ( ) - TCP/IP

**IP, Internet Protocol** ( ) - Internet Protocol,  
TCP/IP, IP IP , 'xx.xx'.  
xx.xx'.

**IP ( Internet Protocol)** - TCP/IP.  
IP . IP  
IP , , . IP  
: 198.63.211.24.

**LAN (Local Area Network)** -

**NIC, Network Interface Card** ( ) - ,  
(PCI,  
turbochannel, nuBus, .) ( , 10baseFL).

**OPC (OLE for Process Control)** –

**OPC Alarms and Events** - OPC

**OPC Data Access** - OPC

**OPC DA** - . OPC Data Access.

**OPC Historical Data Access** - OPC

**OPC HDA** - . OPC Historical Data Access.

**PC** ( ) - Personal Computer ( ).

**Ports** ( ) -

**Protocol** ( ) -

**(Log file)** - ( . log) —

## 2

### 2.1

Copyright © 1999-2017 AGG Software.  
All Rights Reserved

1. Advanced OPC Data Logger -
- 2.
3. Advanced OPC Data Logger ,
- 4.
5. Advanced OPC Data Logger sales@aggsoft.ru
6. Advanced OPC Data Logger , ,  
Advanced OPC Data Logger
7. **Advanced OPC Data Logger** "AS IS".
- 8.
9. Advanced OPC Data Logger ,

10.

Advanced OPC Data Logger  
Advanced OPC Data Logger.

## 2.2

shareware-

 5

- 21
- 

## 2.3

shareware-

 4

Internet,



## 2.4

Advanced OPC Data Logger	<a href="mailto:support@aggsoft.ru">support@aggsoft.ru</a>
	<a href="mailto:support@aggsoft.ru">support@aggsoft.ru</a>
	<a href="mailto:sales@aggsoft.ru">sales@aggsoft.ru</a>

## 3

### 3.1

- Windows 2000 SP 4 - Windows 10 ( x86 x64, ).

### 3.2

Advanced OPC Data Logger.

, Advanced OPC Data Logger  
OPC Data Logger"

"\Programs Files\Advanced

Advanced OPC Data Logger

## 4

## 4.1

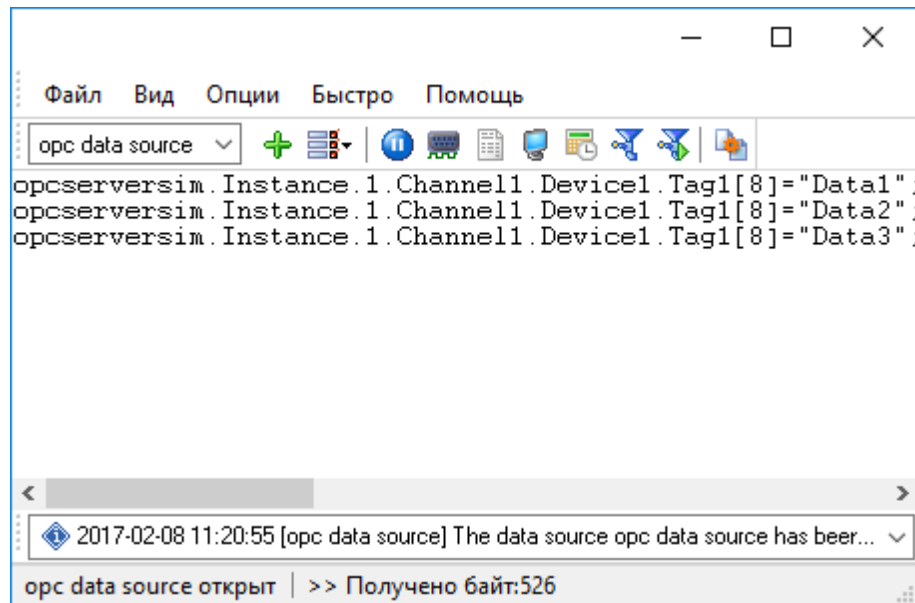
## Advanced OPC Data Logger

Advanced OPC Data Logger

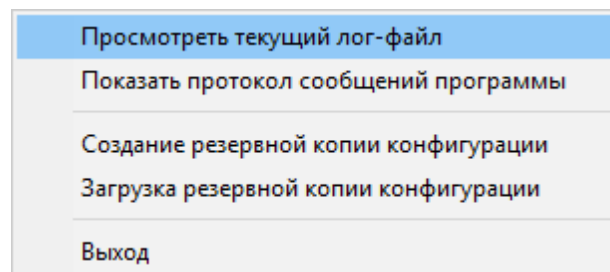
" "

(. 1.1.1),

1.1.2) (" - ..."), " " (



. 1.1.1.



. 1.1.2.

" "

C:\. ,  
\_\_\_\_\_ [8]

**1-2-3-4**

**1.**

" "  
\_\_\_\_\_ [12] OPC " OPC"

**2.**

( ).  
" " ( .  
).

**3.**

, \_\_\_\_\_ [34]  
" "

**4.**

Advanced OPC Data Logger ,

Advanced OPC Data Logger ,

**4.2**

,  
- ,  
- .  
\_\_\_\_\_ [28]  
- , \_\_\_\_\_  
\_\_\_\_\_ [31] - .  
\_\_\_\_\_ [24],  
Advanced OPC Data Logger \_\_\_\_\_ [38]  
(.1.1.1 [7]).

Advanced OPC Data Logger

Advanced OPC Data Logger.

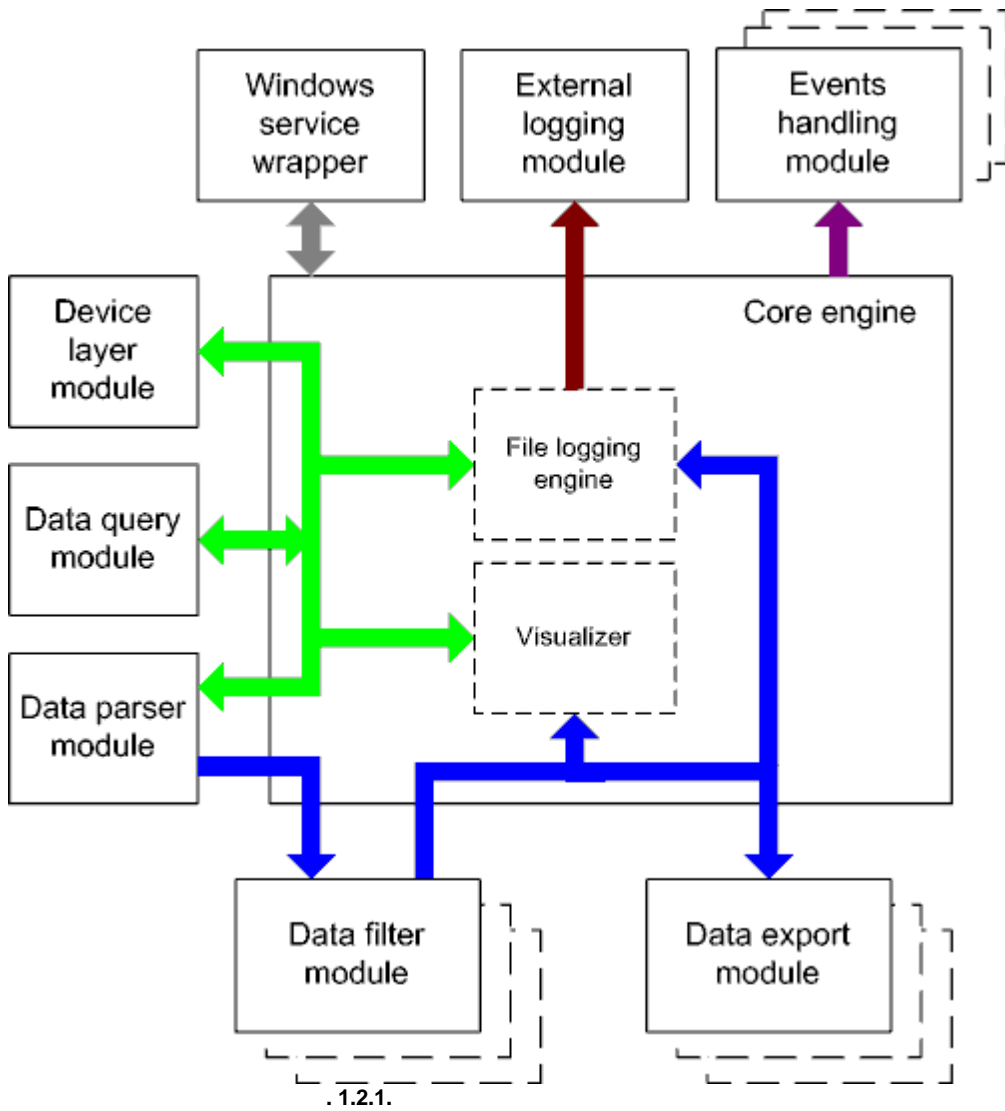
\_\_\_\_\_ [34] (plug-ins),

\_\_\_\_\_ [34].

\_\_\_\_\_ [41] (

), ([1.1.1](#) [7]) \_\_\_\_\_

4.3



- Core engine -

- Device layer module -
- Data query module -
- Data parser module -
- Data filter module -
- Data export module -
- Visualizer -
- File logging engine -
- Windows service wrapper -
- External logging module -
- Events handling module -

## 4.4

Windows.

## 4.5

1.

2.

1.

2.

regedit.exe

Windows x64

HKEY\_LOCAL\_MACHINE\SOFTWARE\Wow6432Node\AGG Software\Advanced OPC Data  
Logger

Windows x32

HKEY\_LOCAL\_MACHINE\SOFTWARE\AGG Software\Advanced OPC Data Logger

3.

:

Ctrl+S -

Ctrl+D -

Ctrl+P -

Ctrl+L -

Ctrl+R -

Ctrl+E -  
Ctrl+M -

Windows;

4.

..

5.

INI

6.

10

## 5

### 5.1 OPC

#### 5.1.1 OPC

OPC.

OPC

OPC

OPC

1.

(

),

NULL

NULL

2.

NULL







Добавить группу...  
 Добавить переменную...  
 Удалить  
 Редактировать...  
 -----  
 Вверх  
 Вниз  
 -----  
 Сохранить в файл  
 Загрузить из файла

. 2.4.2.

Добавить группу...  
 Добавить переменную...  
 Удалить  
 Информация...  
 Присвоить другое имя  
 -----  
 Вверх  
 Вниз  
 -----  
 Сохранить в файл  
 Загрузить из файла

. 2.4.3.

" " " " "OPC",  
 " - " ( . 2.4.2 . 2.4.3).  
 " ...",  
 ( . 2.4.4).



"),

-

-

,

-

,

.

-

,

.

-

,

"

"

,

.

-

/

OPC\_QUALITY\_GOOD,

-

-

,

OPC

OPC

UTC+0.

OPC

OPC

"

,

"

-

:

```

ITEM_NAME[8]="opcserverstim.Instance.1.T1";ITEM_VALUE[3]=1606521099;ITEM_QUALITY[3]=192
ITEM_NAME[8]="opcserverstim.Instance.1.T2";ITEM_VALUE[3]=1170485188;ITEM_QUALITY[3]=192
ITEM_NAME[8]="opcserverstim.Instance.1.Val1";ITEM_VALUE[5]=4958.32440443337;ITEM_QUALITY[3]=
ITEM_NAME[8]="opcserverstim.Instance.1.Val2";ITEM_VALUE[5]=4970.36790242419;ITEM_QUALITY[3]=

```

NULL

-

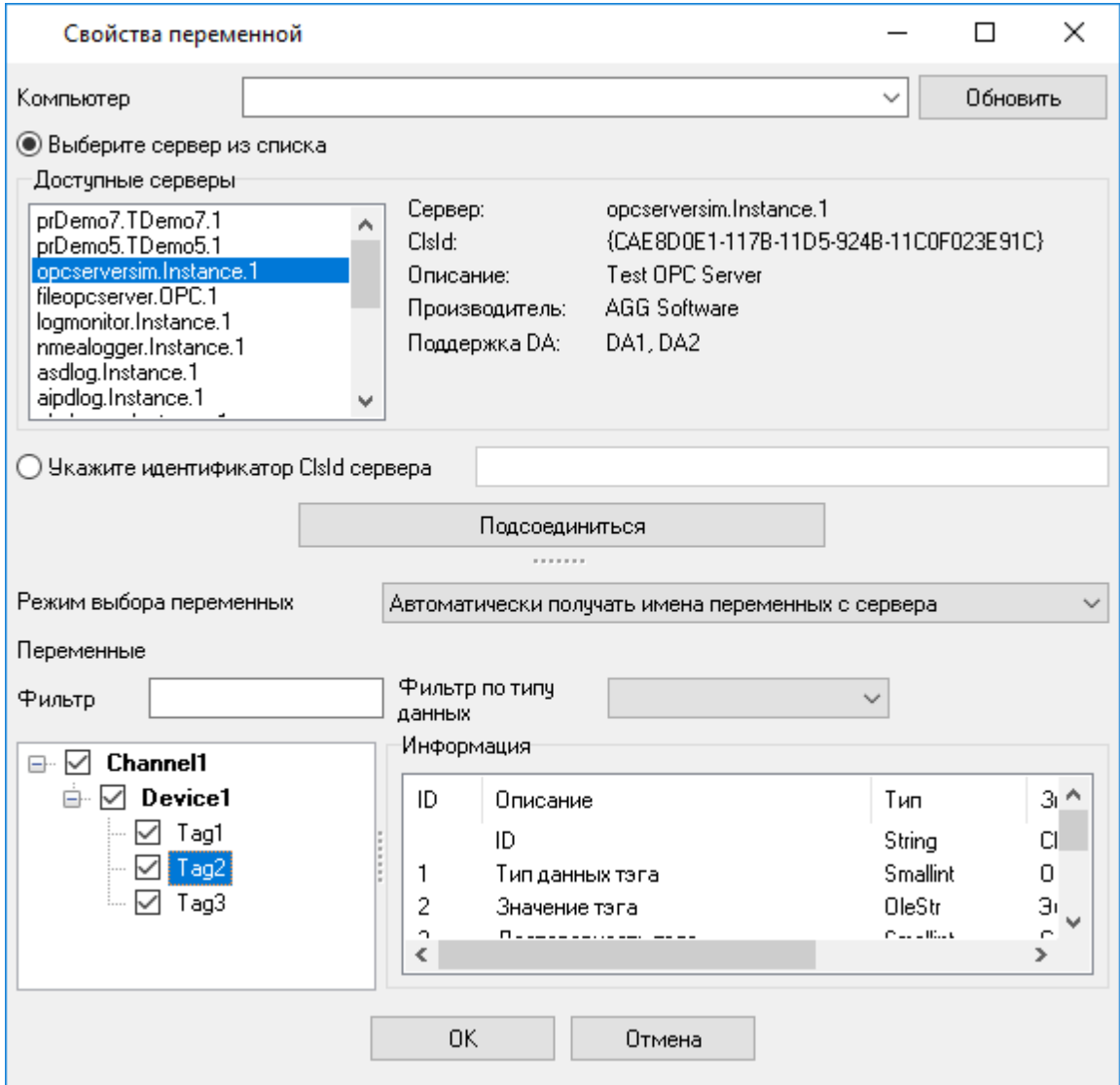
:

"OK"

"\_\_\_\_\_12".

" OPC "

( . 2.4.5).



. 2.4.5.

OPC

OPC

( )

DA - DA.

" " , " "

2 :

1.  
2.

( . 2.4.1) "OK" /

( . 2.4.6),

Выбрать все

Очистить все

Инvertировать выбор

Скопировать выбранные переменные для ручного редактирования

. 2.4.6.



( . 2.4.4).

:" , ,  
" "  
:" "12".  
"OK"  
" " "  
"OPC " , ... "  
" " "  
" " "  
"OPC " ,  
" " "  
"OK" -  
1: /  
2: ,  
" " "  
"OPC " " "



"OPC " "

5.1.2 "Cron"

Cron- ,  
 ( Unix) cron- ,  
 :  
 < >< >< >< \_ >< >< \_ >  
 \* ( )  
 , , " " -?.  
 ( , 1,3,7)  
 ( , 1-5).  
 (\*)  
 , 0-23/2 " " /  
 ( 0,2,4,6,8,10,12,14,16,18,20,22). \* /4 " " -  
 . 1-30/3 - , 1,4,7,10,13,16,19,22,25,28.  
 " " " "  
 (Jan, Feb, ... , Dec) (Mon, Tue, ... ,  
 Sun)

* * * * *	
59 23 31 12 5	, -
59 23 31 Dec Fri	( , )
45 17 7 6 *	7- 17:45
0,15,30,45 0,6,12,18 1,15,31 * 1-5 *	00:00, 00:15, 00:30, 00:45, 06:00, 06:15, 06:30, 06:45, 12:00, 12:15, 12:30, 12:45, 18:00, 18:15, 18:30, 18:45, 1- , 15- 31-

*/15 */6 1,15,31 * 1-5	00:00, 00:15, 00:30, 00:45, 06:00, 06:15, 06:30, 06:45, 12:00, 12:15, 12:30, 12:45, 18:00, 18:15, 18:30, 18:45, 1- , 15- 31-
0 12 ** 1-5 (0 12 ** Mon-Fri)	( )
** * 1,3,5,7,9,11 *	, , , , ,
1,2,3,5,20-25,30-35,59 23 31 12 *	23:01, 23:02, 23:03, 23:05, 23:20, 23:21, 23:22, 23:23, 23:24, 23:25, 23:30, 23:31, 23:32, 23:33, 23:34, 23:35, 23:59
0 9 1-7 * 1	, 9
0 0 1 **	, ,
* 0-11 **	
** * 1,2,3 *	,
** * Jan, Feb, Mar *	,
0 0 ***	
0 0 ** 3	

cron-

"?".

: - , , , ,

, :

??\*\*\*\*

" ( , , )-

, , 8:25,

25 8 \*\*\*\*\*

:

- ? ? ? ? \* - ;
- ? \* \* \* \* - ( , 10:15)
- \* ? \* \* \* - : 11:15, 12:15, 13:15 . . ;
- \*/5 ? \* \* \* - ( , ; )

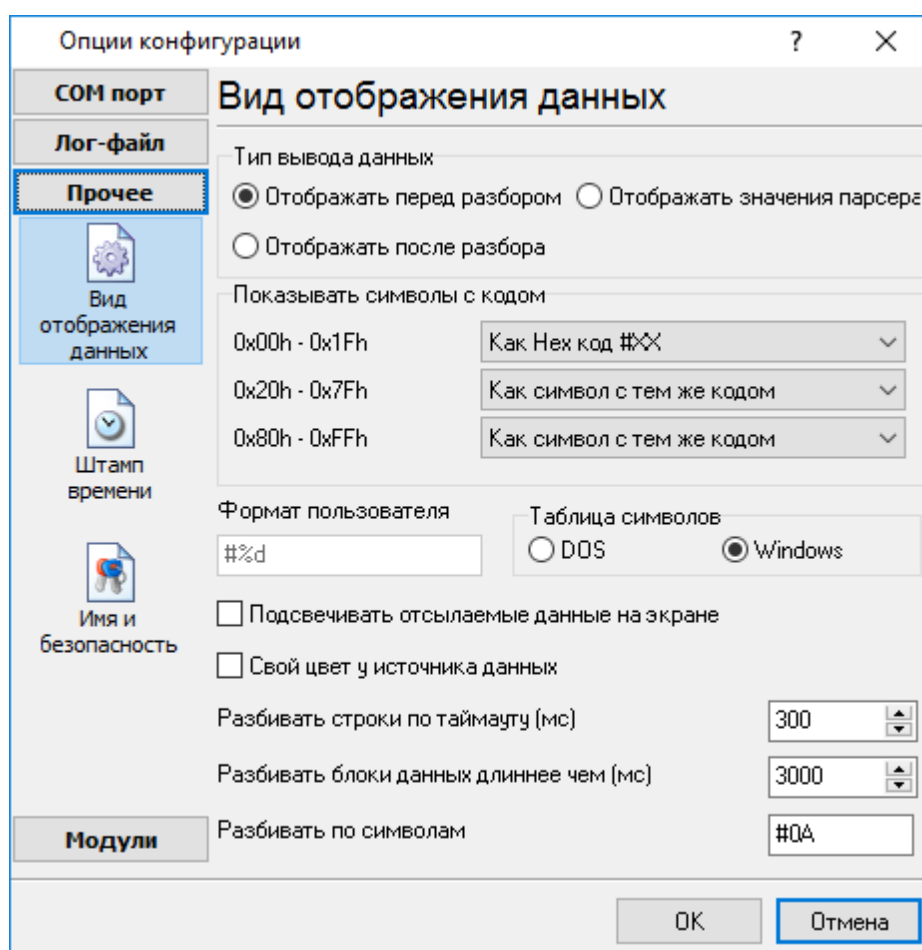
## 5.2

### 5.2.1

3.1.1): ( [.1.1.1](#) <sup>7</sup>) 2 ( .

1.

2.



. 3.1.1.

" - " ( . 3.1.1)

Hex-

%d

, %x -

(OEM).

: Windows DOS

0,

0,

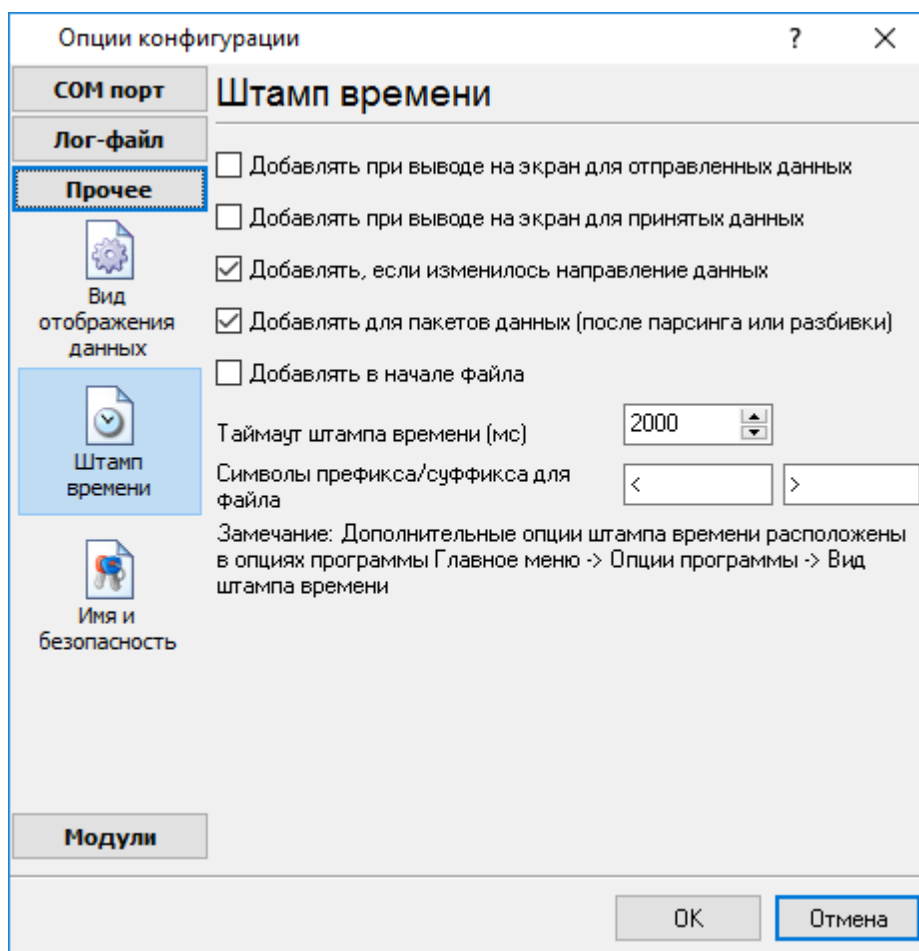
. 3.1.1

### 5.2.2

( . 3.2.1)

( )

           40).



. 3.2.1.

. :>#0D#0A

### 5.2.3

( . 3.3.1) :

-

"

"

46

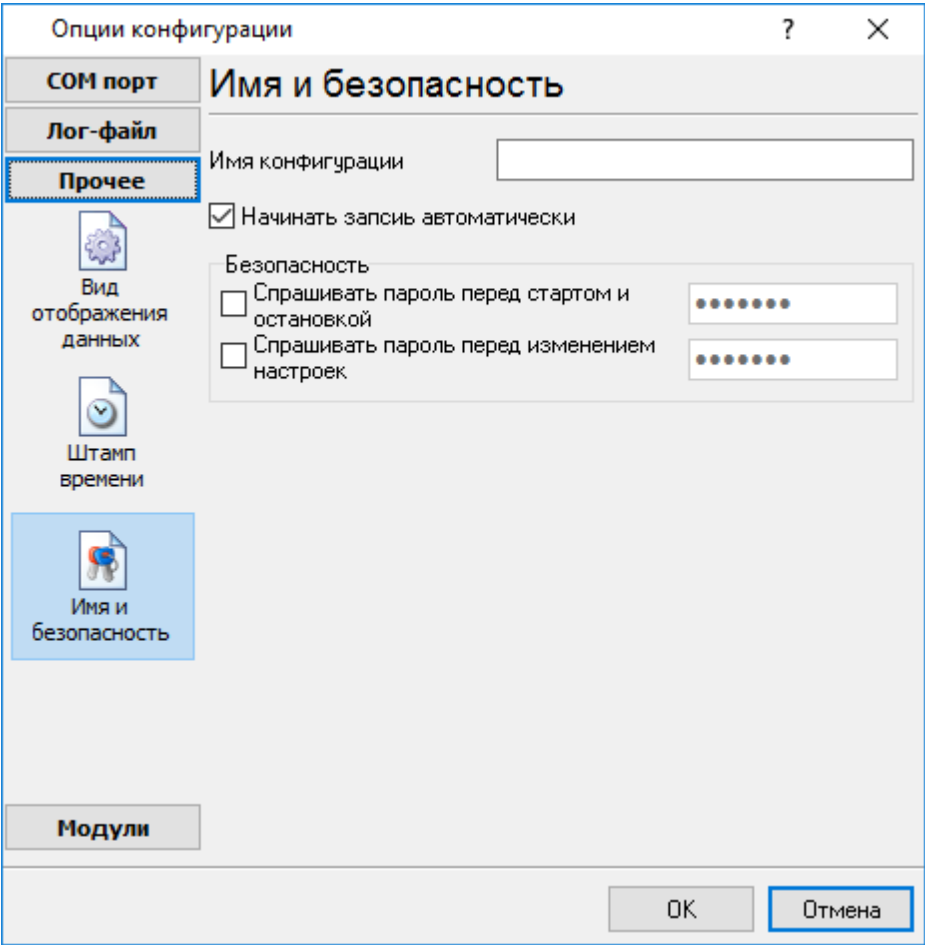
"

/

"

-

,

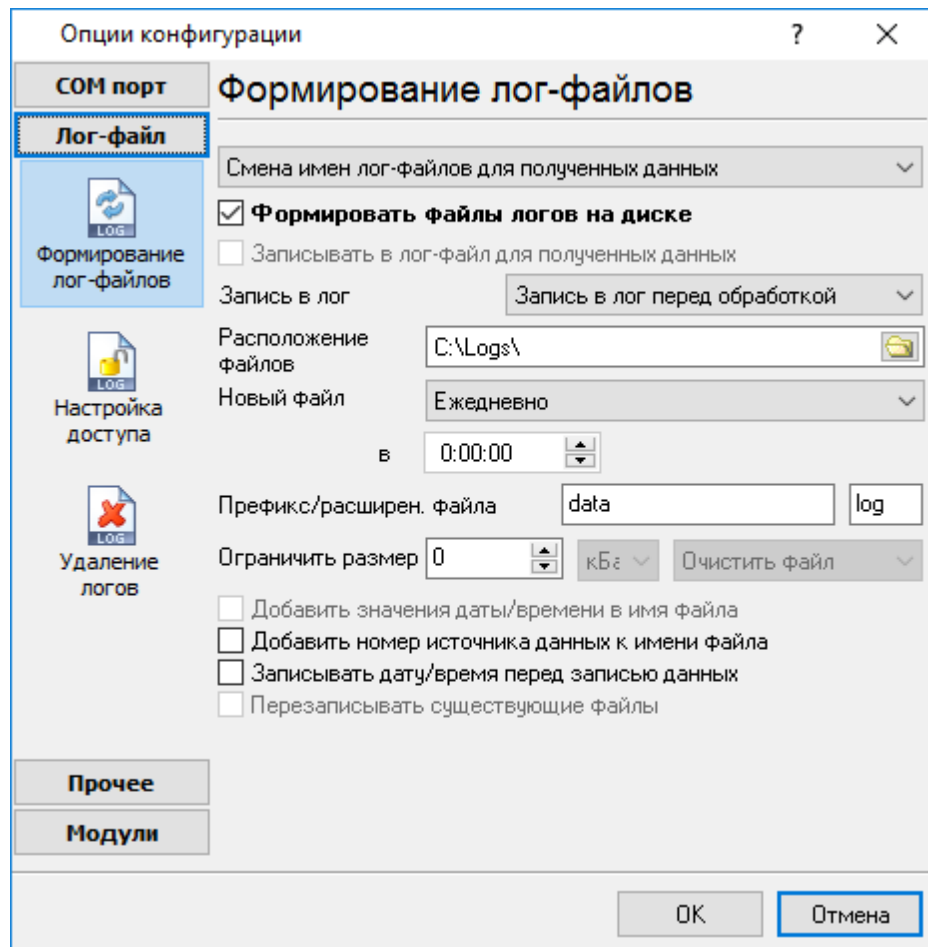


. 3.3.1.

5.3 -

5.3.1 -

- ( ). ( . 4.1.1).



. 4.1.1.

Advanced OPC Data Logger

"sample",

"log ",



"log". 21- " 2003 - "sampleYYYYMMDD.  
"sample20030321.log".

( ).  
" " :

1. - , .  
DDMMYYYY, DD - , MM -  
YYYY - ;  
2. - .  
3. - MMYYYY;  
4. , YYYYMMDD;

5. : sample00000001.log.  
6. - ;  
WWYYYY, WW -  
YYYY -

7. - ;  
8. - ;  
9. HHDDMMYYYY;

d - , (1 - 31);  
dd - , (01 - 31);  
ddd - ( - )  
dddd - ( - )  
m - , (1 - 12);  
mm - , (01 - 12);  
mmm - ( - )  
mmmm - ( - )  
yy - (00 - 99);  
yyyy - (0000 - 9999);  
h - , (0 - 23);

```

hh - , (00 - 23);
n - , (0 - 59);
nn - , (00 - 59);
s - , (0 - 59);
ss - , (00-59).

: "sample_log", "txt".

: = sample_log_, = txt ( !).
HHDDMMYYYY.

4 7 /

, COM1-

sample20030321.log.

/

4 7.

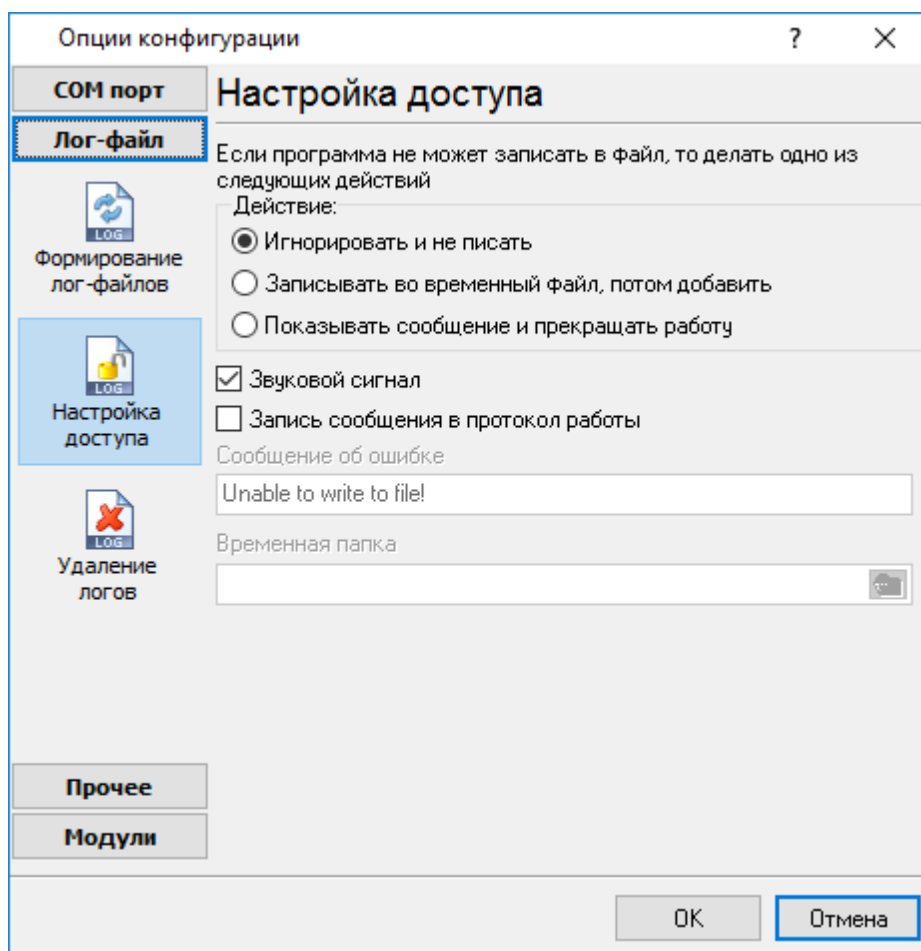
"

1. - !
2. -
3. ( ) -
4. ( ).

```

5.3.2

Microsoft Office ( , Microsoft Word),  
Advanced OPC Data Logger



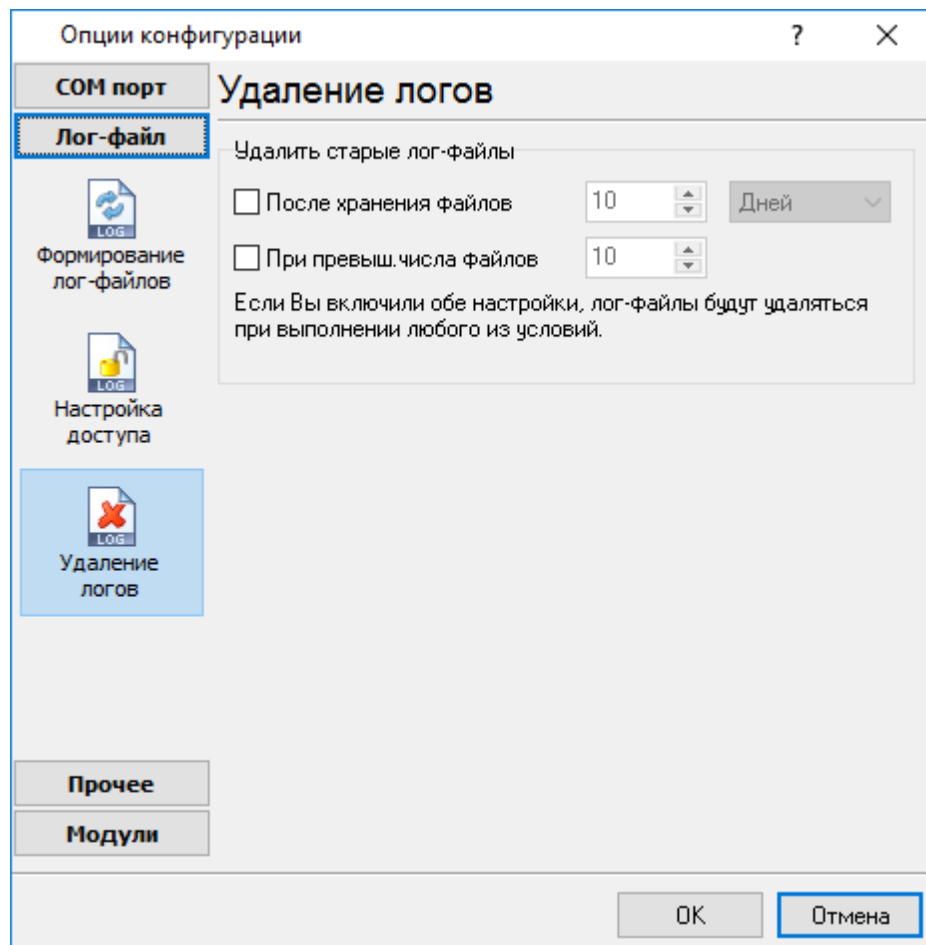
. 4.2.1.

Advanced OPC Data Logger  
( . 4.2.1), :

- 
- 
-

## 5.3.3

(рис. 4.3.1).



. 4.3.1.

## 5.3.4

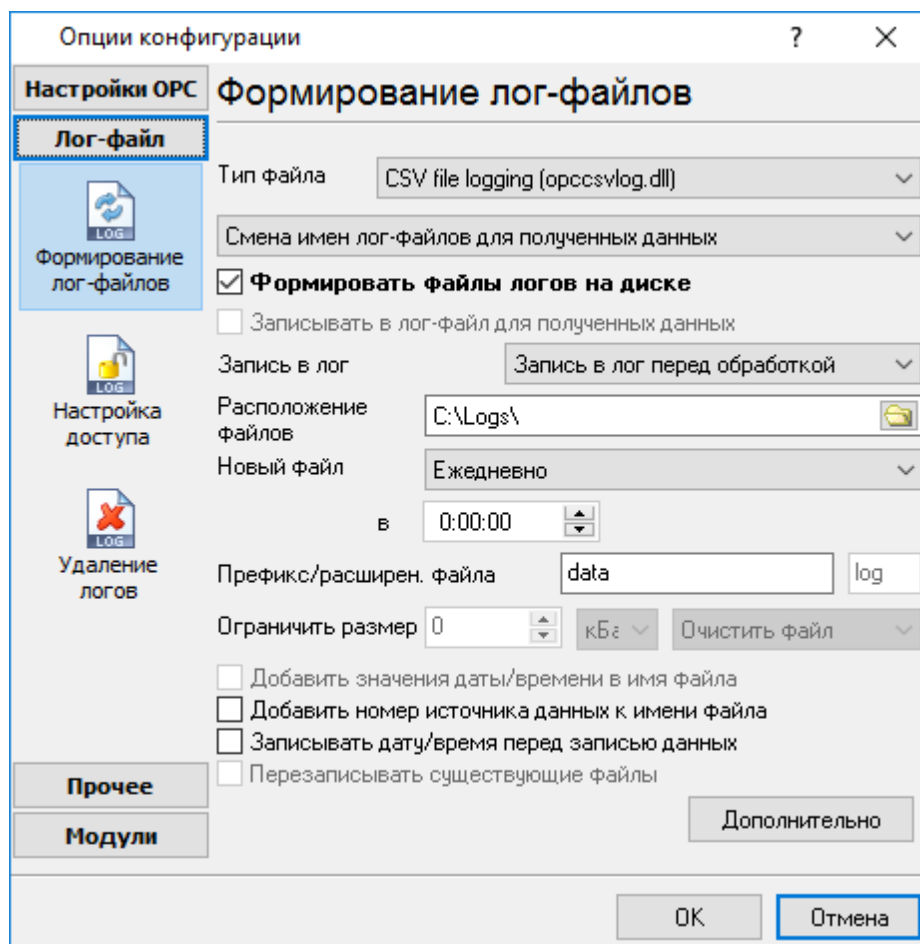
## CSV -

CSV,  
Excel-

CSV

CSV

OPC [12]



. 4.4.1 CSV

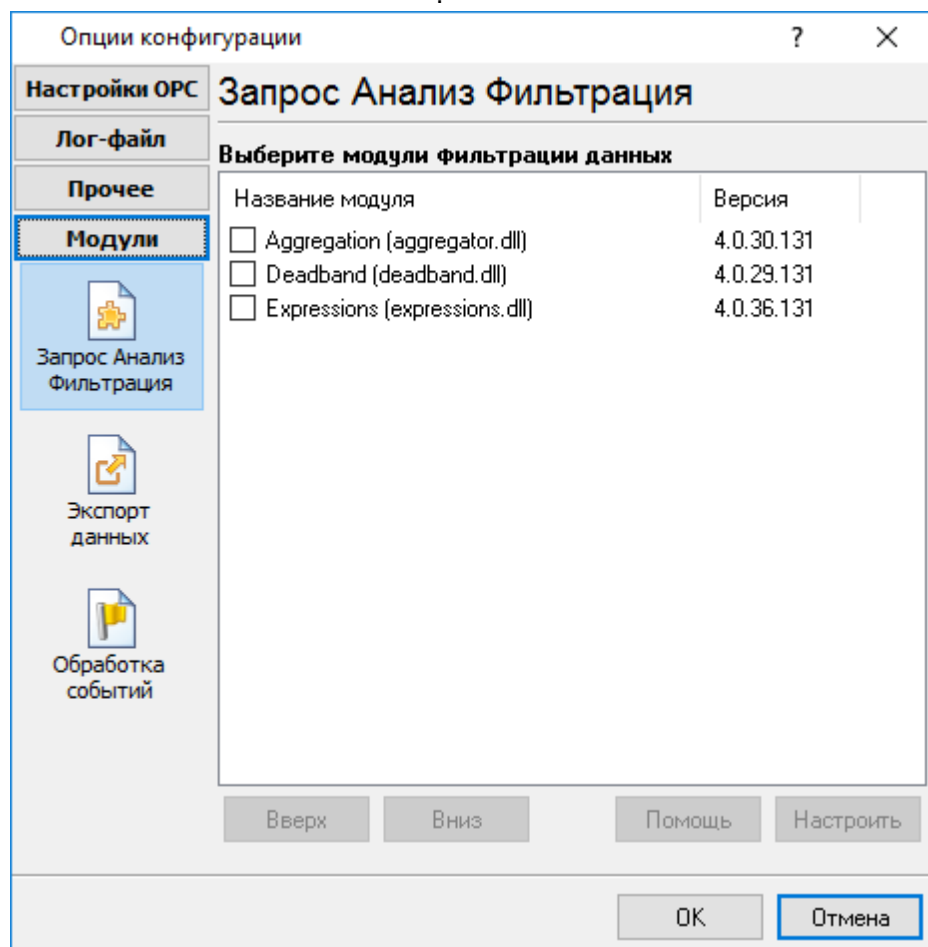
## 5.4

## 5.4.1

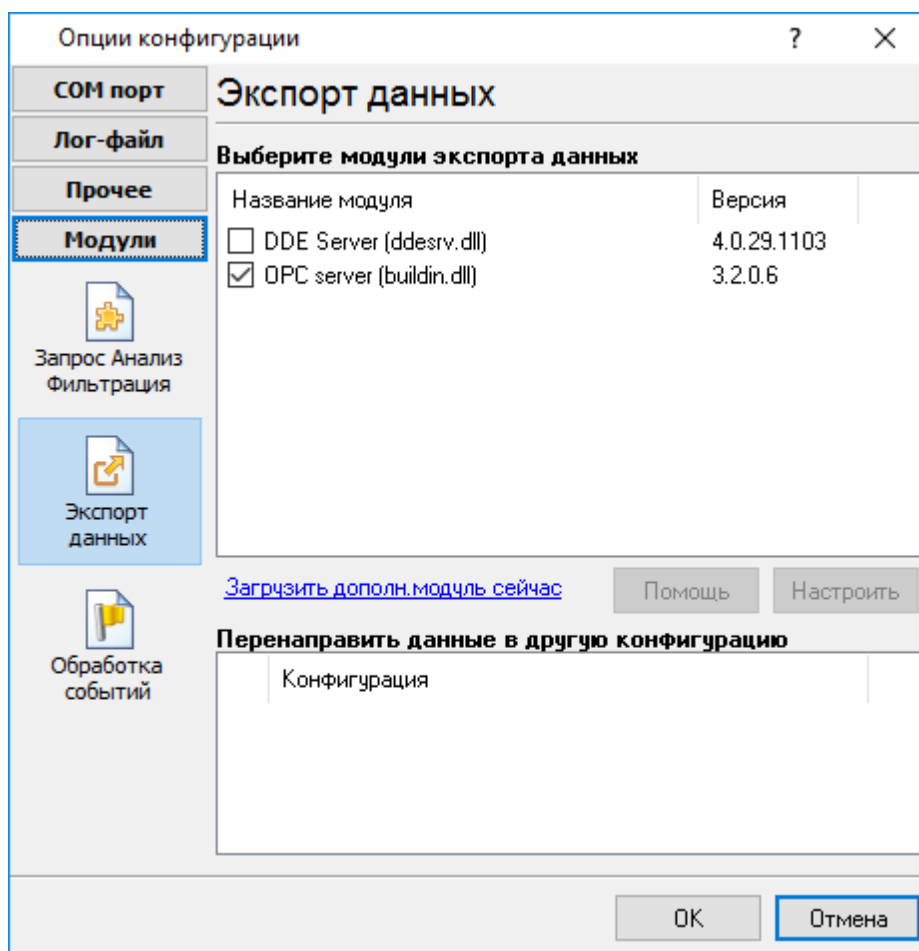
" ( . . ).

Advanced OPC Data Logger :

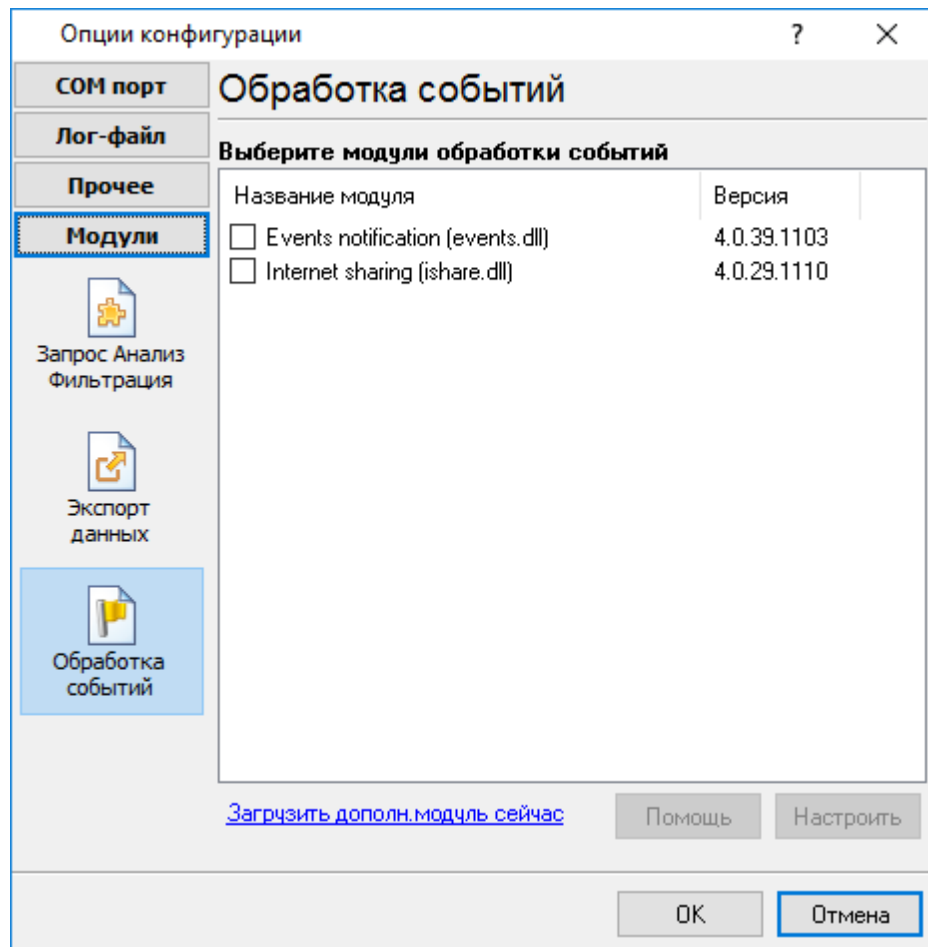
- - ;
- - , Excel ;
- ( . 5.1.3) - , " - " "



. 5.1.1.



. 5.1.2.



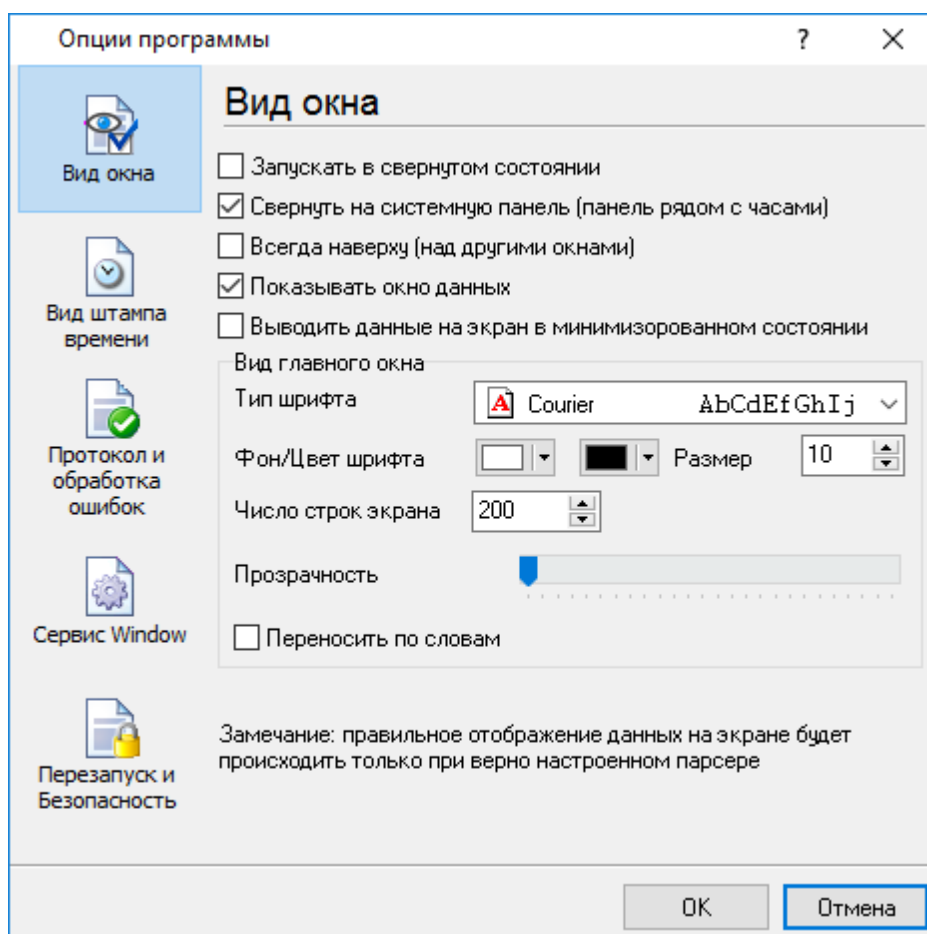
. 5.1.3.

"OK".



## 5.5

## 5.5.1

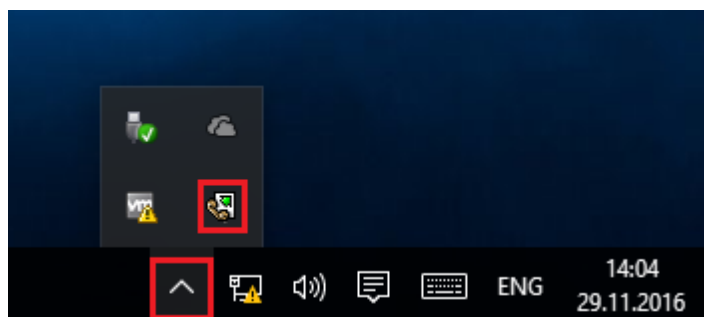


. 6.1.1.

" ( . 6.1.1) :

- Advanced OPC Data Logger

( . 6.1.2) ;



. 6.1.2.

-

( . 6.1.2) -

Advanced OPC Data Logger

;

,

-

;

-

/

.

.

-

.

,

;

);

-

(

,

,

-

.

;

- Windows 2000

.

-

,

-

.

-

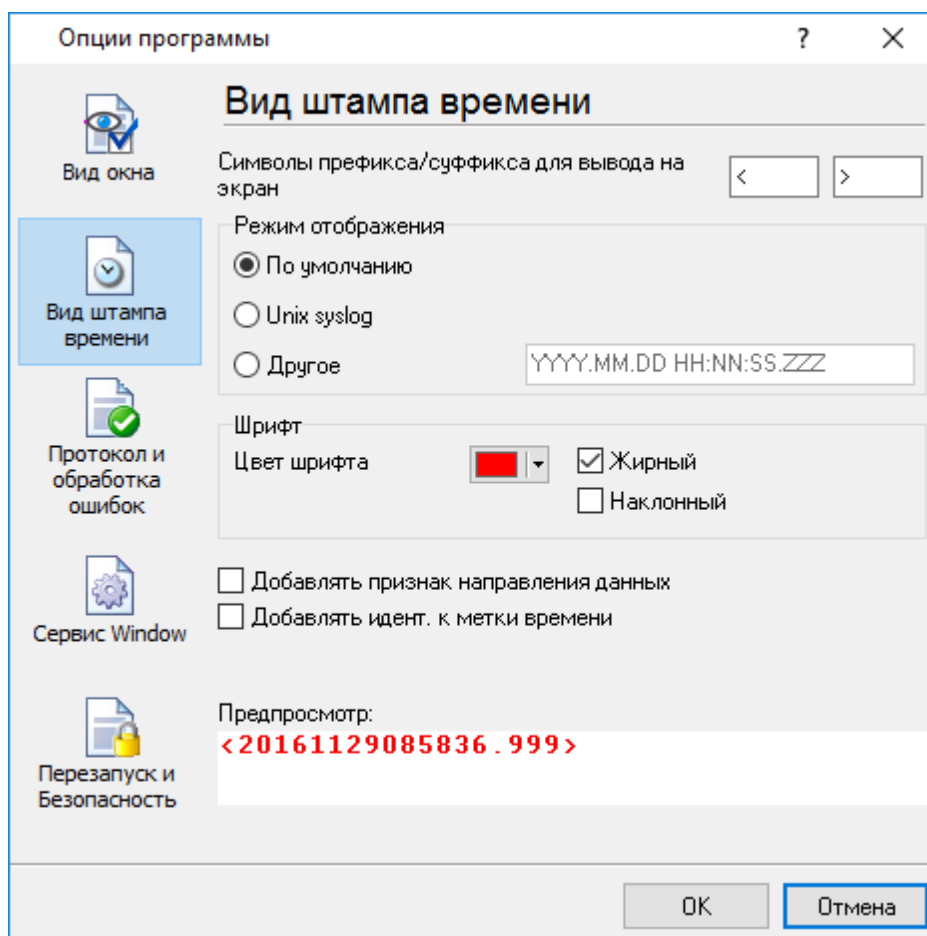
,

.

.

## 5.5.2

( . 6.2.1)



. 6.2.1.

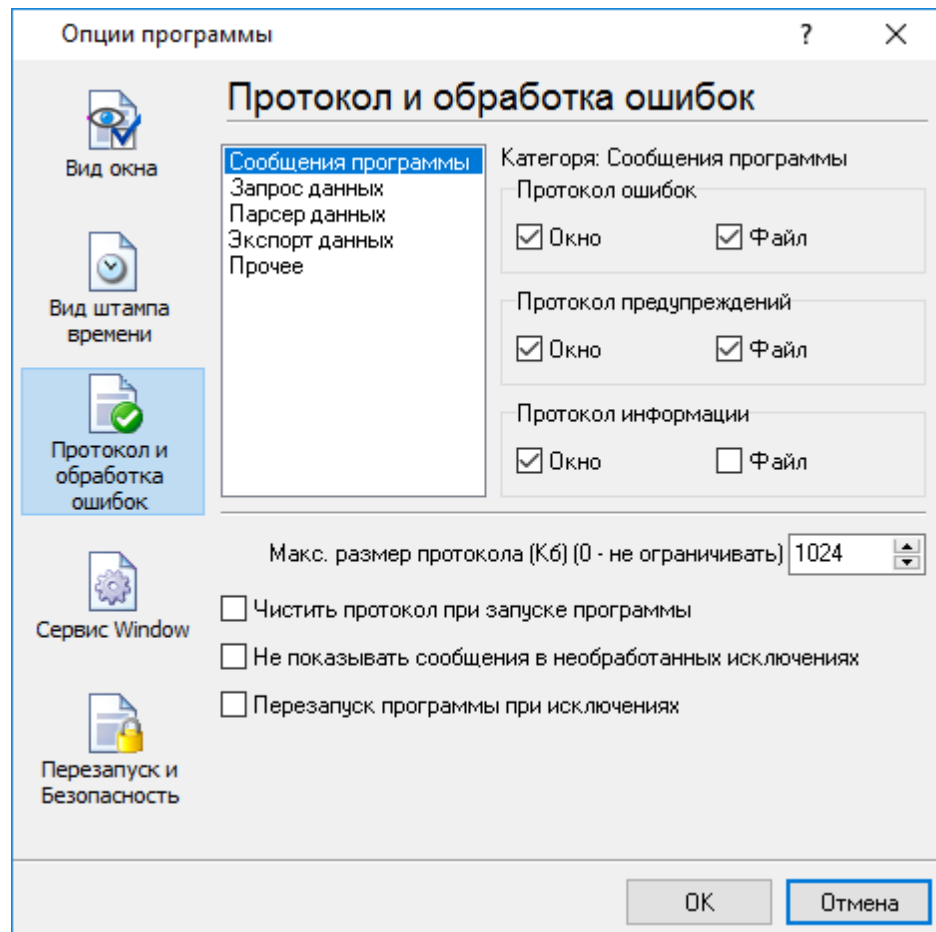
25

TX

RX

, COM1.

## 5.5.3



. 6.3.1.

Advanced OPC Data Logger

3-

- 
- 
-

- ; - ,
- - , ;
- - , ;
- - , ;

/

Advanced OPC Data Logger

**5.5.4 Windows 2000**  
**5.5.4.1**

( ) Windows :

- 2000 ); ( Windows
- - ( );
- ; ,
- ;

).

( Windows Vista  
 (elevated) .

" " " **Windows**" ( . 6.4.1).

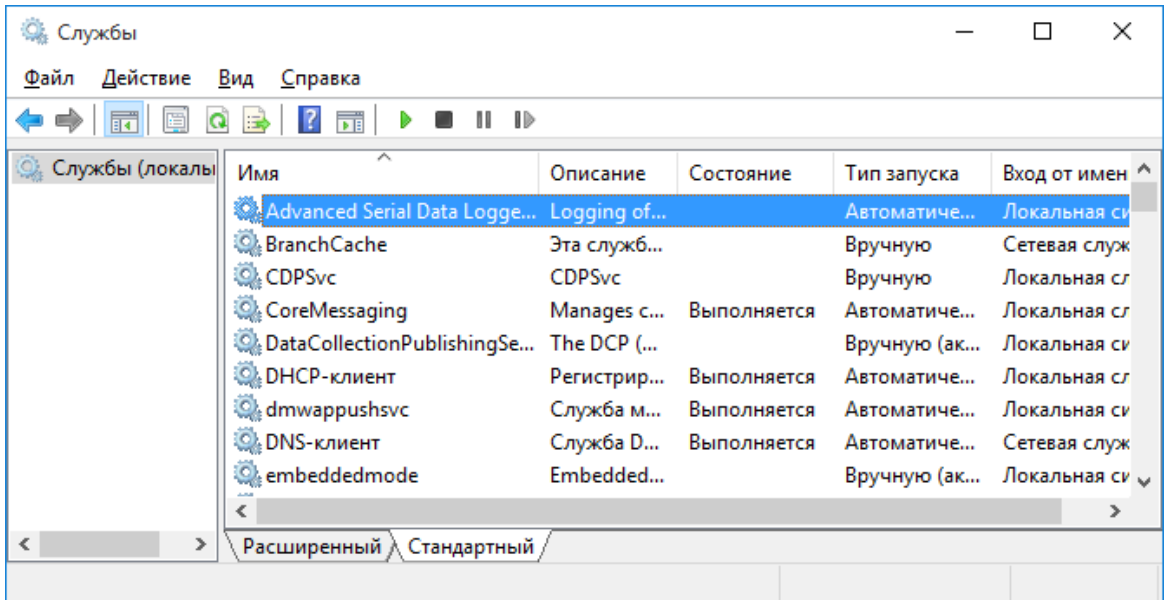




. 6.4.2

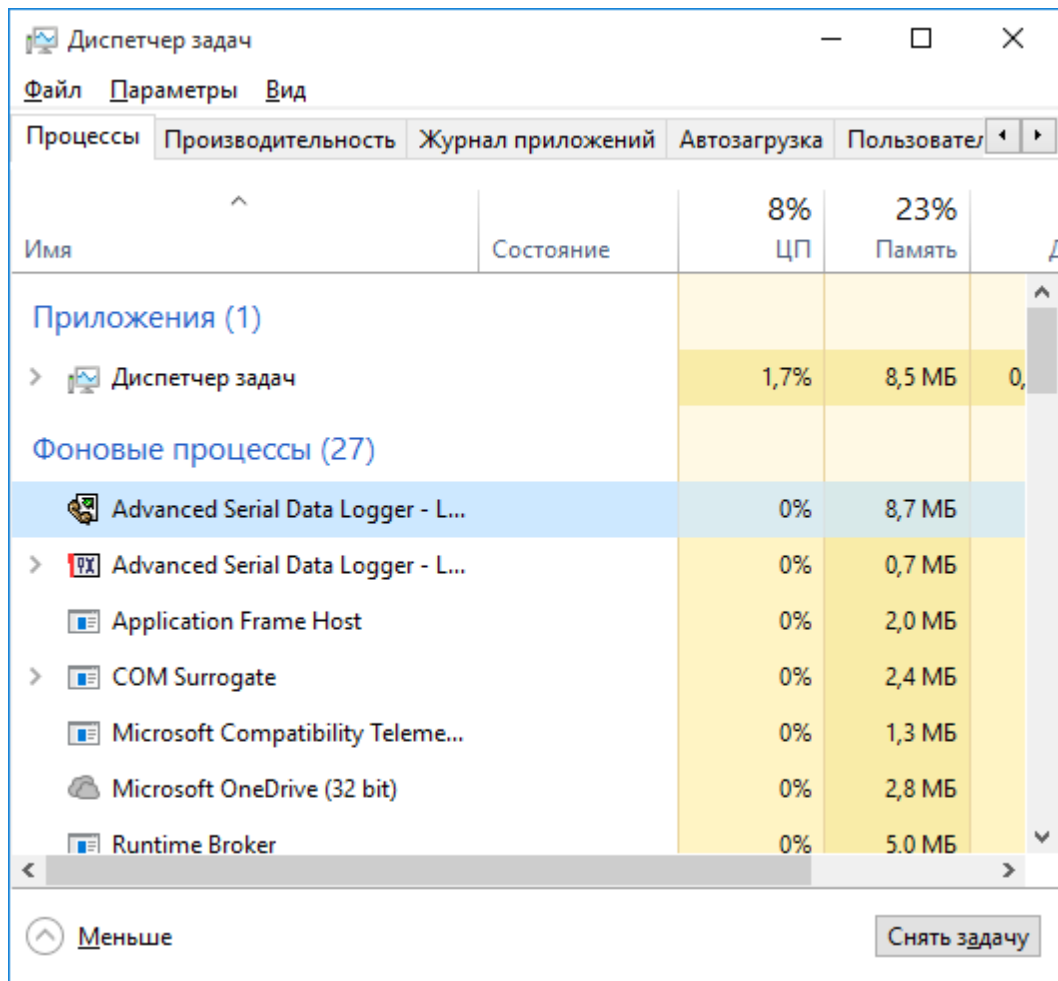
Advanced OPC Data Logger, " ' " ( . 6.4.1)

' " " ' ( . 6.4.3).



. 6.4.3. ( Windows 2000)

exe ( . 6.4.4).  
 2 - opcloggersrv.exe oplogger.  
 Advanced OPC Data Logger  
 Advanced OPC Data Logger,  
 svany.exe



. 6.4.4.

opcloggersrv.exe :

- /? - ;
- /I - ;
- /A - ;
- /D - ;
- /R -

#### 5.5.4.2

#### Windows Vista

Windows Vista

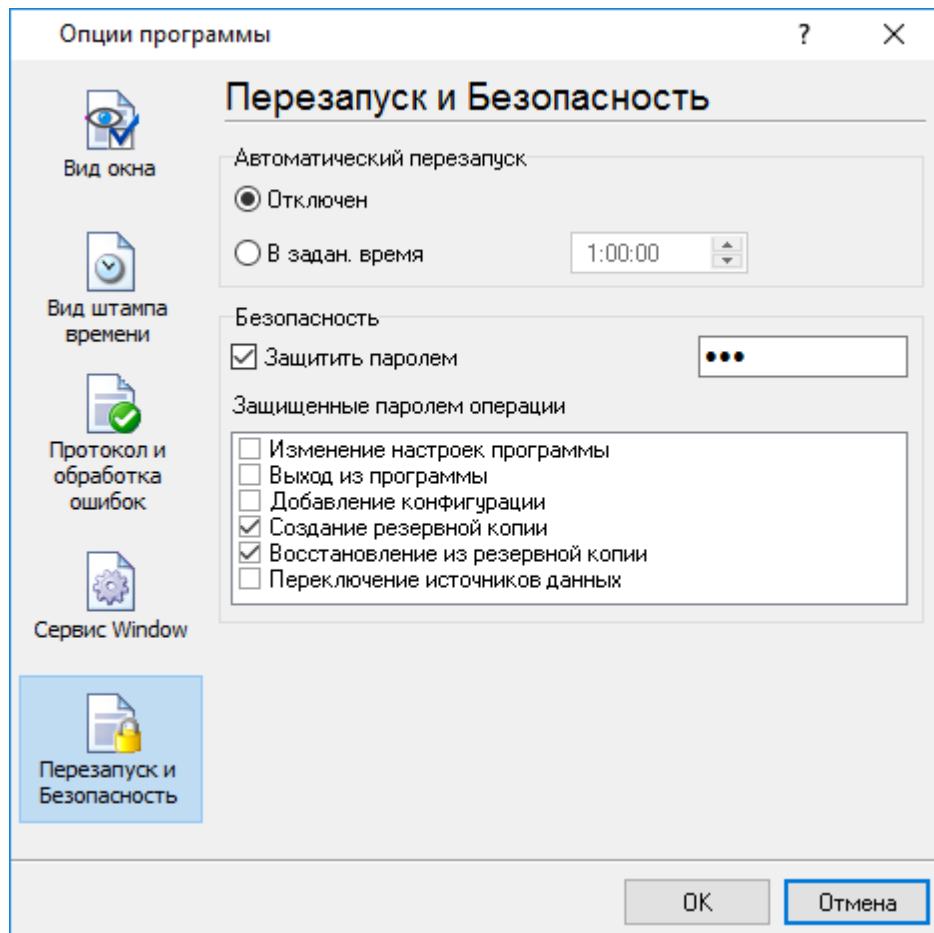


Windows.

- : Interactive Services Detection
- : UIODetect
- : UIODetect.exe
- :
- : %windir%\system32\UIODetect.exe
- :
- \* Home Basic:
- \* Home Premium:
- \* Business:
- \* Enterprise:
- \* Ultimate:

5.5.5

( . 6.5.1).



. 6.5.1.

6

?

6.1

SoftIce

[support@aggsoft.ru](mailto:support@aggsoft.ru).