



Advanced Serial Data Logger

<b>1</b>		<b>1</b>
1	Advanced Serial Data Logger .....	1
2	.....	2
<b>2</b>	,	<b>3</b>
1	.....	3
2	.....	4
3	.....	5
4	.....	5
<b>3</b>		<b>6</b>
1	.....	6
2	.....	6
<b>4</b>		<b>6</b>
1	.....	6
2	.....	8
3	.....	10
4	.....	11
5	.....	11
<b>5</b>		<b>12</b>
1	.....	12
	(COM) .....	12
2	.....	17
	.....	17
	.....	19
	.....	21
3	- .....	22
	- .....	22
	- .....	25
	.....	27
4	.....	28
	.....	28
	OPC .....	32
5	.....	36
	.....	36
	.....	38
	.....	39

Windows 2000

Windows Vista

40

43

44

**6**

**RS-232**

**0**

1 RS-232 ..... 0

2 DB9 (9 pin) RS-232 ..... 0

3 DB25 (25 pin) RS-232 ..... 0

4 RS-232 ..... 0

5 RS-232 ..... 0

**7**

**?**

**45**

1 ..... 45

2 (FAQ) ..... 46



Advanced Serial Data Logger

Advanced Serial Data Logger

Windows NT/2000/XP,

: <http://www.aggsoft.ru/>

: <http://www.aggsoft.ru/serial-data-logger.htm>

: <http://www.aggsoft.ru/rs232-pinout-cable/>

## 1.2

**ASCII -**

ASCII -

Windows  
ASCII. ASCII \*.TXT ( ,  
README.TXT).

**Binary File -**

ASCII ( 0 255).

**Bytes ( ) -**

**Bit ( ) -**  
8

: 0 1. 8

**Baud Rate -**

( ),

BPS

600 , 2400 bps ( ),

**Cable ( ) -**

**COM port -**

4

IBM IBM-  
COM1, COM2, COM3 COM4.

**Data bits -**

( ),

**Flow control** -

" "

( )

**Handshaking** -

**Internet** ( ) -

TCP/IP

**PC** ( ) -

Personal Computer ( ).

**Ports** ( ) -

**Protocol** ( ) -

**RS232, RS423, RS422 RS485** - Electronics Industry Association (EIA)

RS232, RS423, RS422, RS485,

EIA

"RS"

(recommended standard).

"EIA".

**Stop bits** ( ) -

1 2.

**(Log file)** -

( . log) —

## 2

### 2.1

Copyright © 1999-2016 AGG Software.  
All Rights Reserved

1. Advanced Serial Data Logger -
- 2.
3. Advanced Serial Data Logger ,
- 4.
5. Advanced Serial Data Logger sales@aggsoft.ru
6. Advanced Serial Data Logger ,  
Advanced Serial Data Logger .
7. **Advanced Serial Data Logger** "AS IS".
- 8.
9. Advanced Serial Data Logger ,
10. - ,  
Advanced Serial Data Logger ,  
Advanced Serial Data Logger.

## 2.2

shareware-

5

- 21 ;
- ;
- 65535 ;

## 2.3

shareware-

Internet, [3](#)

## 2.4

Advanced Serial Data Logger	<a href="mailto:support@aggsoft.ru">support@aggsoft.ru</a>
	<a href="mailto:support@aggsoft.ru">support@aggsoft.ru</a>
	<a href="mailto:sales@aggsoft.ru">sales@aggsoft.ru</a>



## 3

### 3.1

- Windows 2000 Professional SP 4;
- Windows 2000 Server;
- Windows XP x86 x64;
- Windows 2003 Server x86 x64;
- Windows Vista ( ) x86 x64.
- Windows 7 ( ) x86 x64.
- Windows 2008 Server ( ) x86 x64.
- Windows 8 ( ) x86 x64.

COM-

### 3.2

Advanced Serial Data Logger.

, Advanced Serial Data Logger  
Files\Advanced Serial Data Logger"

"\Programs

Advanced Serial Data Logger

## 4

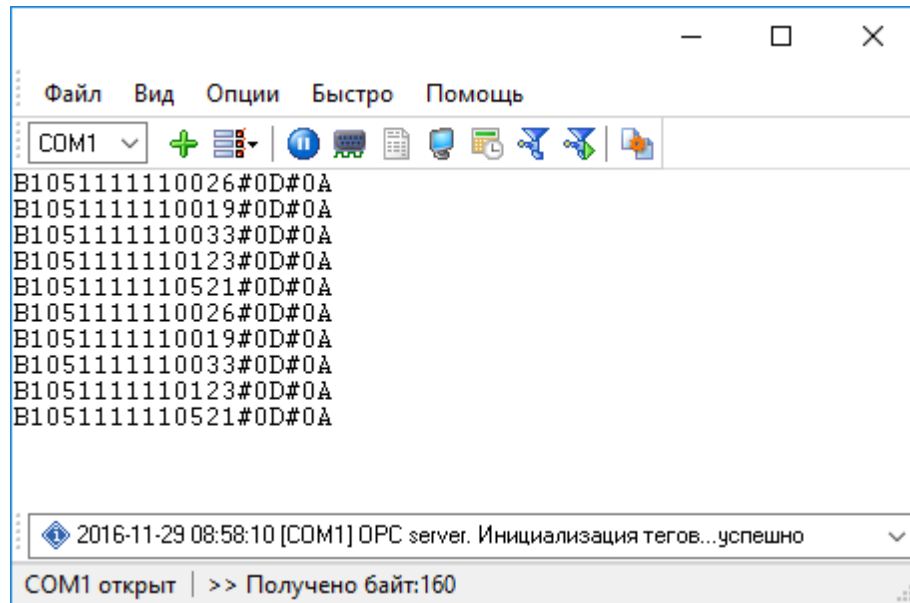
### 4.1

Advanced Serial Data Logger

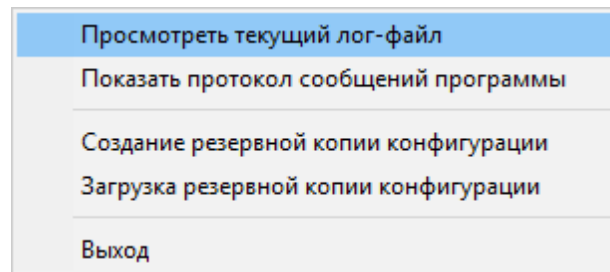
Advanced Serial Data Logger " "

( . 1.1.1),

1.1.2)



. 1.1.1.



. 1.1.2.

C:\.

1-2-3-4

1.

COM



([1.1.1.1](#) 6).

Advanced Serial Data Logger "[17](#)",

[36](#).

Advanced Serial Data Logger

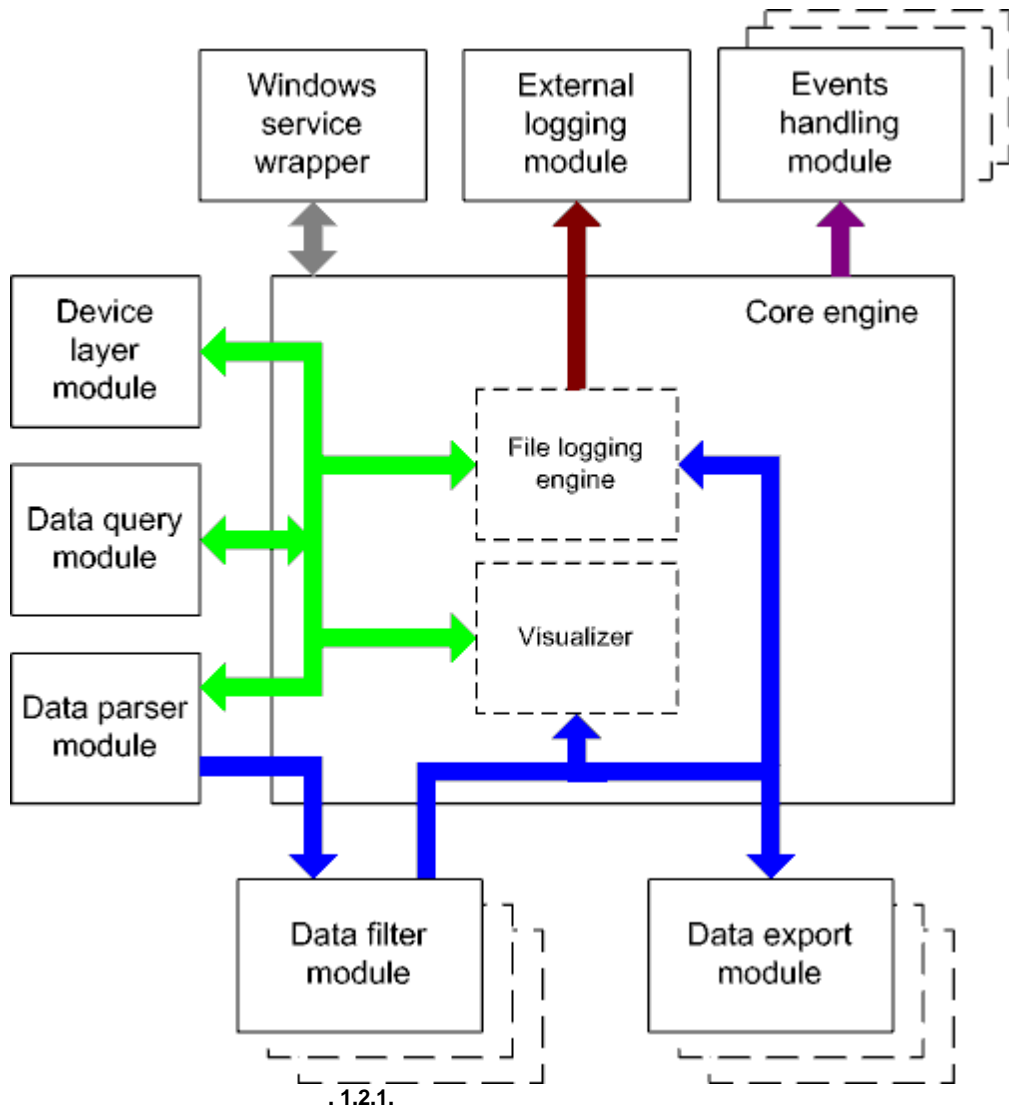
Advanced Serial Data Logger.  
[28](#) (plug-ins),

[28](#)".

[39](#) (

([1.1.1.1](#) 6), [6](#)

4.3



- Core engine -

- Device layer module -
- Data query module -
- Data parser module -
- Data filter module -
- Data export module -
- Visualizer -
- File logging engine -
- Windows service wrapper -
- External logging module -
- Events handling module -

## 4.4

Windows. / COM-

## 4.5

1.

2.

1.

2.

regedit.exe

Windows x64

HKEY\_LOCAL\_MACHINE\SOFTWARE\Wow6432Node\AGG Software\Advanced Serial Data  
Logger

Windows x32

HKEY\_LOCAL\_MACHINE\SOFTWARE\AGG Software\Advanced Serial Data Logger

3.

Ctrl+S -

Ctrl+D -

Ctrl+P -

Ctrl+L -

log- ;

Ctrl+R -  
Ctrl+E -  
Ctrl+M -

Windows;

4.

5.

INI

6.

10

## 5

### 5.1

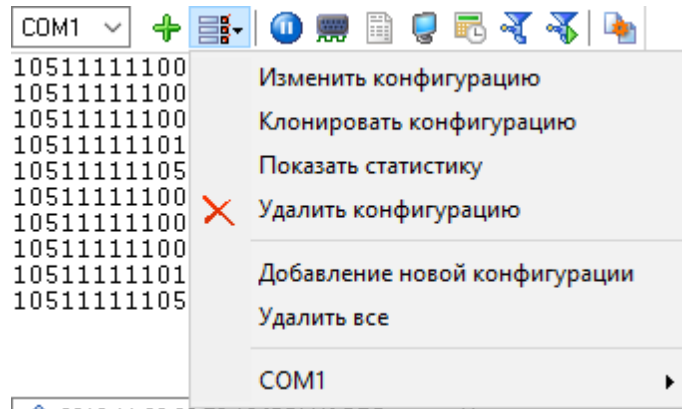
#### 5.1.1

#### (COM)

(.1.1.1<sup>6</sup>)

(.2.1.2).  
COM

(.2.1.1).



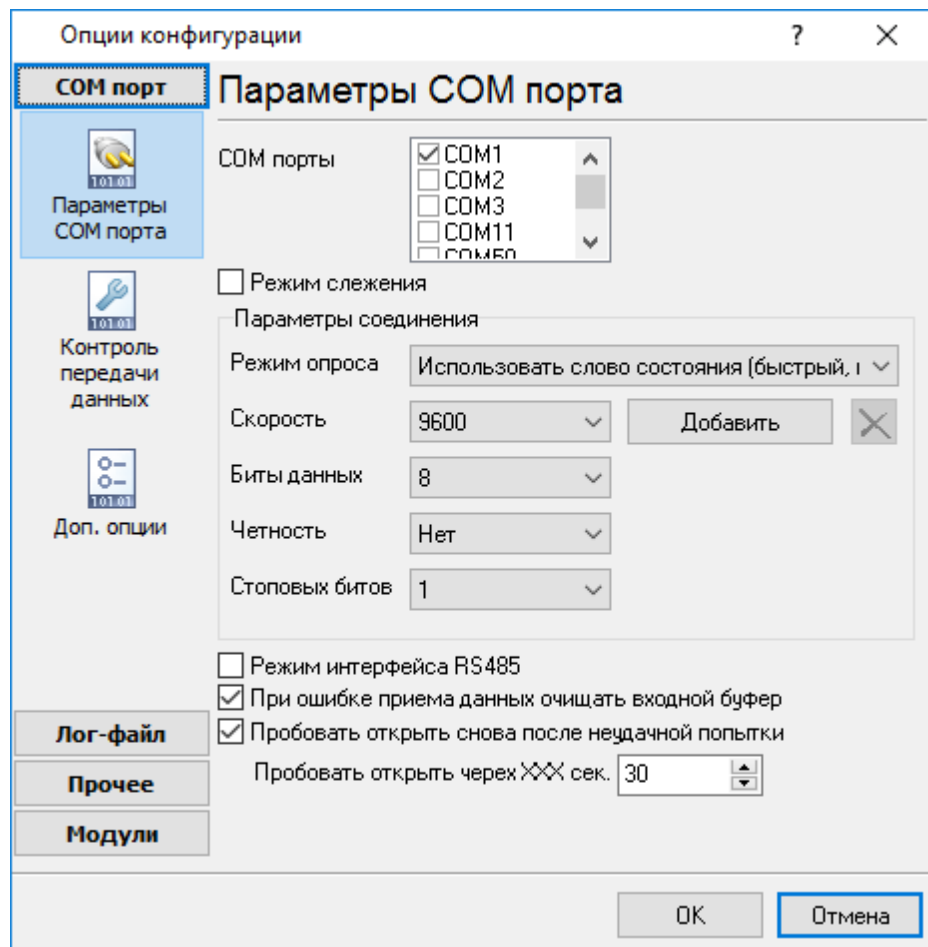
.2.1.1.

COM-

COM-

COM-

(.2.1.1).



## . 2.1.2. COM-

RS-485

, RTS-

API- Windows  
/ : API-  
Windows.

API,

Windows

API

API -

. Advanced Serial



Data Logger

(WRPI.DRV

Advanced Serial Data Logger

( . 2.1.3).

"

"

"

"

DTR"

RTS" / "

(RTS / DTR)

90%

10%

DSR"

Windows

CTS" / "

(CTS / DSR).

RTS CTS  
DTR DSR.

"

"

"

"

10 % Xoff " " " " " "

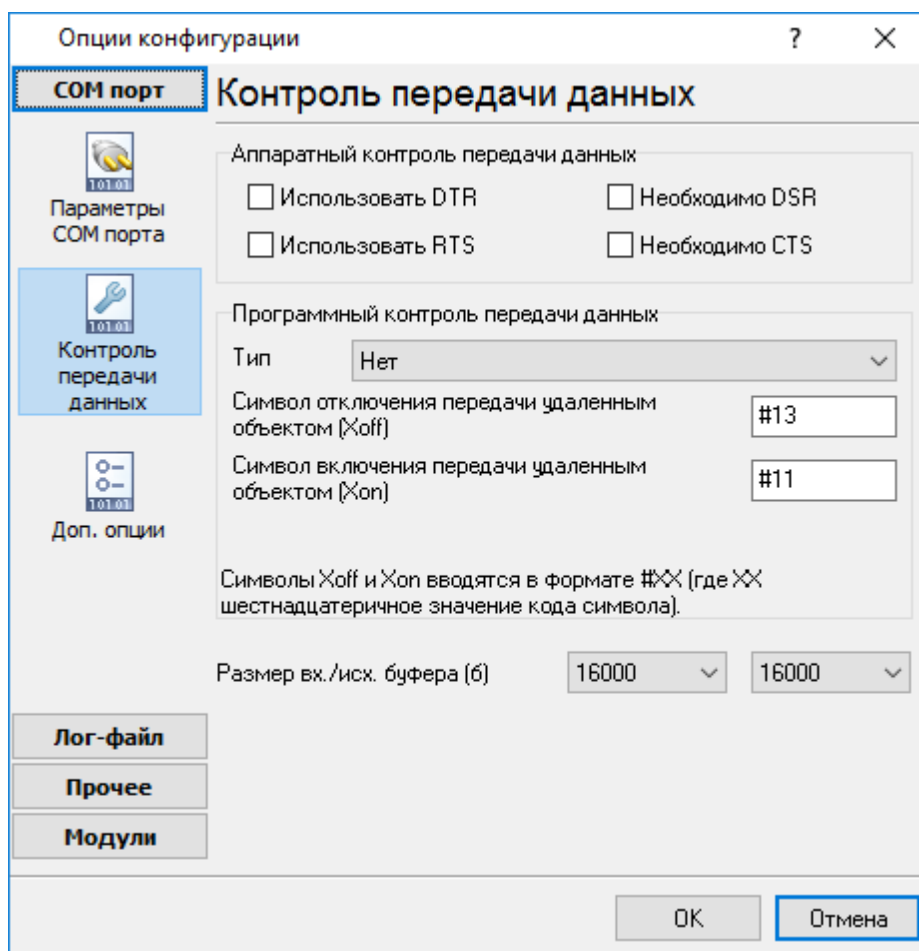
10% Xon.

10% 90% " " " " " "

Xon Xoff.

) ( -

0x13 - COM- 0x11



. 2.1.3

./ . COM

Advanced Serial Data Logger

COM-

COM-

Advanced Serial Data Logger,  
COM-

Advanced Serial Data Logger.

UART (UART receiver parity error) -

;

UART (UART receiver overrun),  
UART (UART receiver framing error) -

;

CTS (transmit timeout waiting for CTS),  
DSR (transmit timeout waiting for DSR),  
RLSD (transmit timeout waiting for RLSD) -

,

;

(transmit queue is full) -

,

Advanced Serial Data Logger

;

break (break condition received)

Windows NT

" ->

" [\\_\\_\\_\\_\\_](#) 

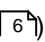
## 5.2

### 5.2.1

3.1.1):

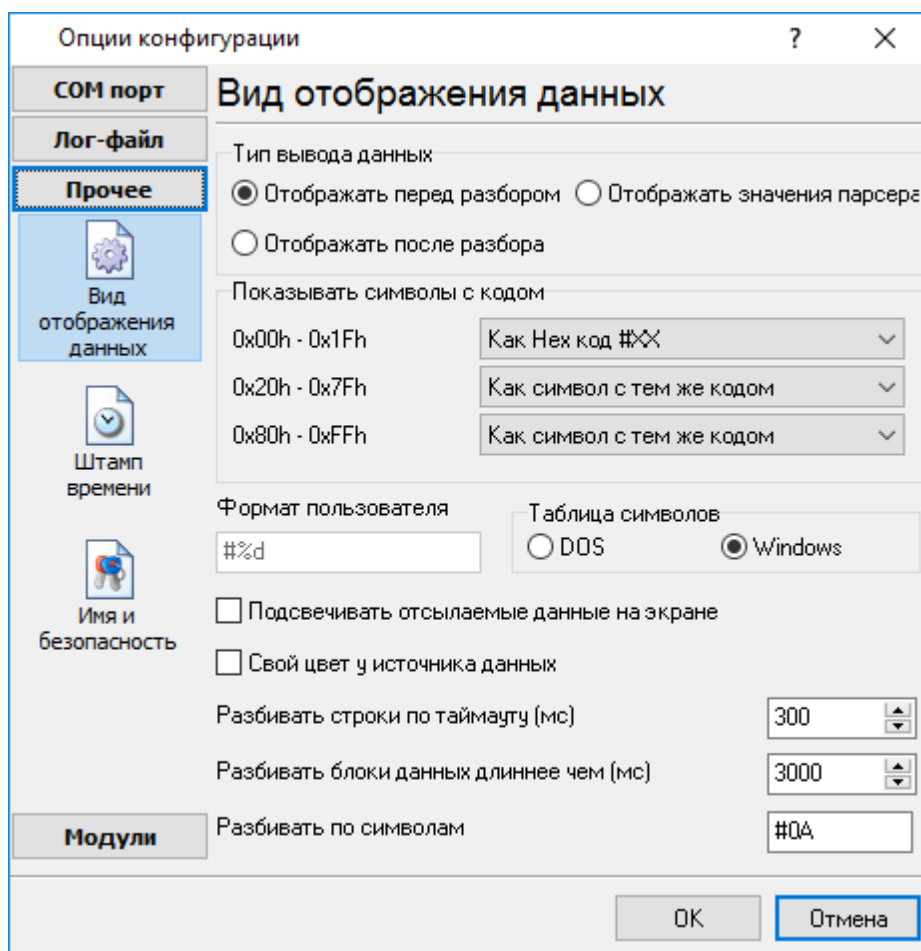
1.

2.

([1.1.1](#) 

2

(



. 3.1.1.

" ( . 3.1.1)

Hex-

,%d

,%x -

: Windows DOS

(OEM).

0,

0,

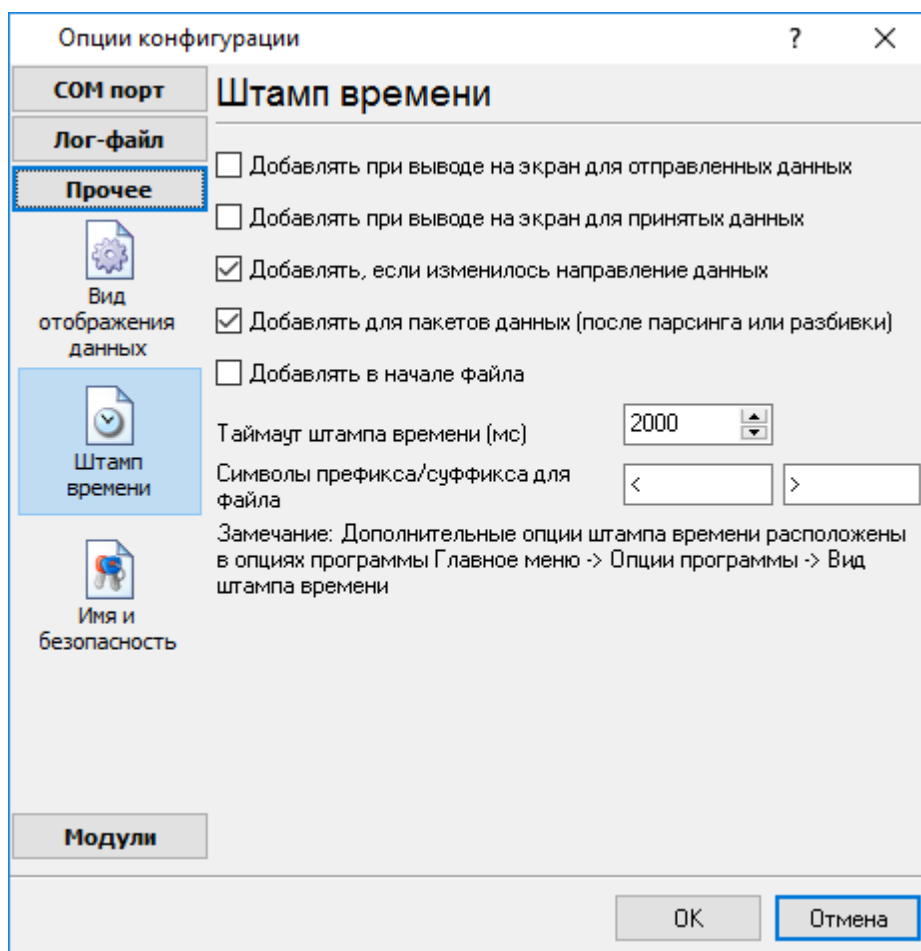
. 3.1.1

### 5.2.2

( . 3.2.1)

( )

           38.



. 3.2.1.

. :>#0D#0A

### 5.2.3

( . 3.3.1) :

-

"

"

44

"

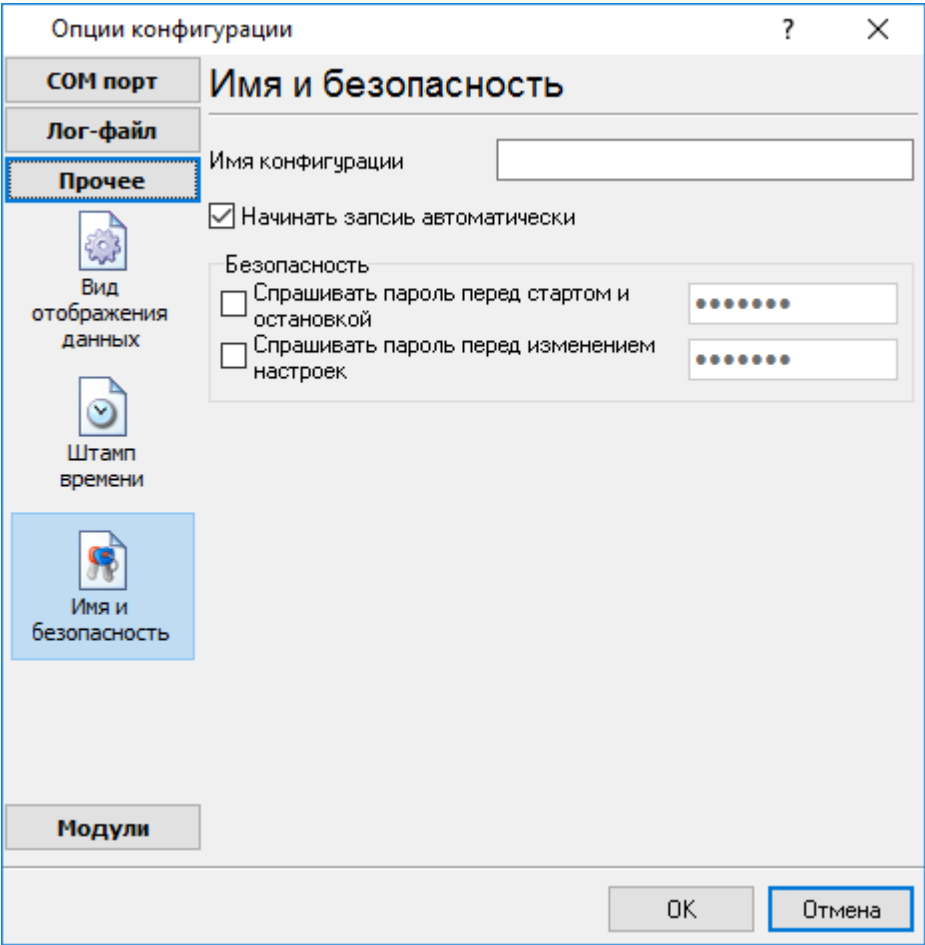
/

"

-

,



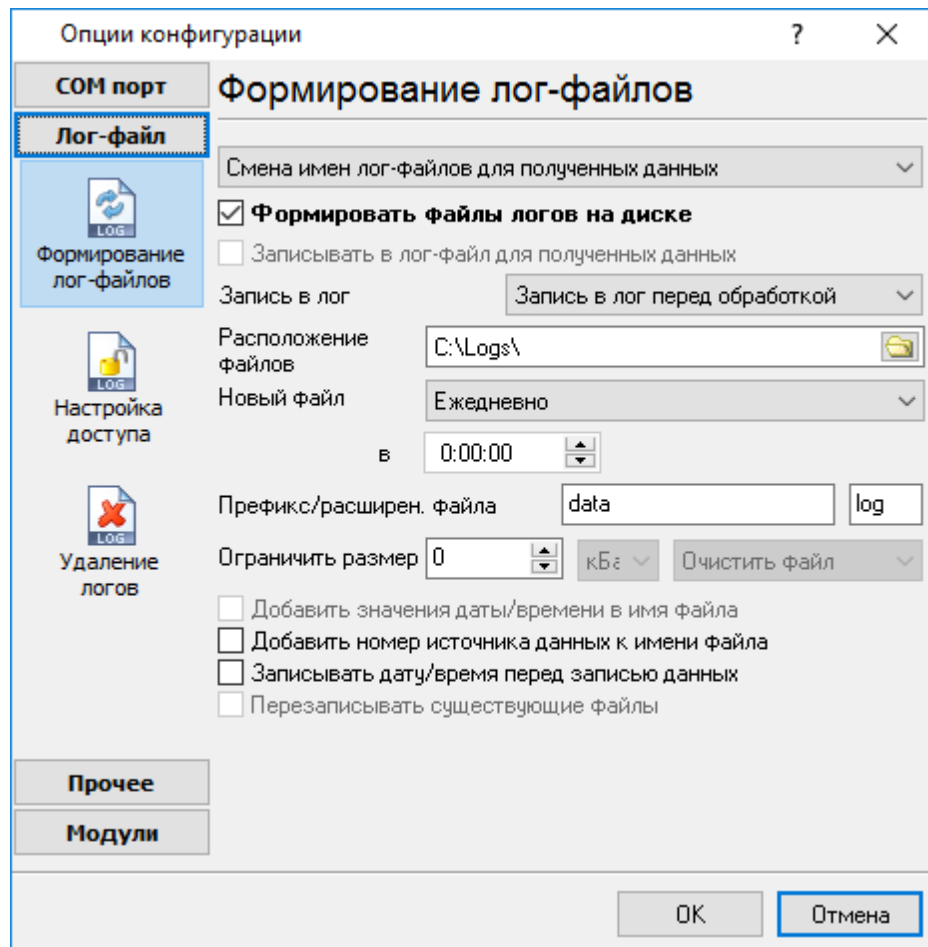


. 3.3.1.

5.3 -

5.3.1 -

- ( ). ( . 4.1.1).



. 4.1.1.

"OK".

Advanced Serial Data Logger

"sample",

"log ",

"log". 21- " 2003 - "sampleYYYYMMDD.  
"sample20030321.log".

( ).  
" " :

1. - , .  
DDMMYYYY, DD - , MM -  
YYYY - ;  
2. - .  
MMYYYY;

3. -  
YYYYMMDD;

4. -  
: sample00000001.log.

5. - ;  
6. - .  
WWYYYY, WW -

, YYYY -  
;

7. - ;  
8. - .  
HHDDMMYYYY;

9. - -  
- -

, .  
:

d - , (1 - 31);  
dd - , (01 - 31);  
ddd - ( - ) ,

dddd - ( - )  
;

m - , (1 - 12);  
mm - , (01 - 12);  
mmm - ( - ) ,

mmmm - ( - ) ,  
;

yy - (00 - 99);  
yyyy - (0000 - 9999);  
h - , (0 - 23);

```

hh - , (00 - 23);
n - , (0 - 59);
nn - , (00 - 59);
s - , (0 - 59);
ss - , (00-59).

: "sample_log", "txt".

: = sample_log_, = txt ( !).
HHDDMMYYYY.

4 7 /

, COM1-

sample20030321.log.

/

4 7.

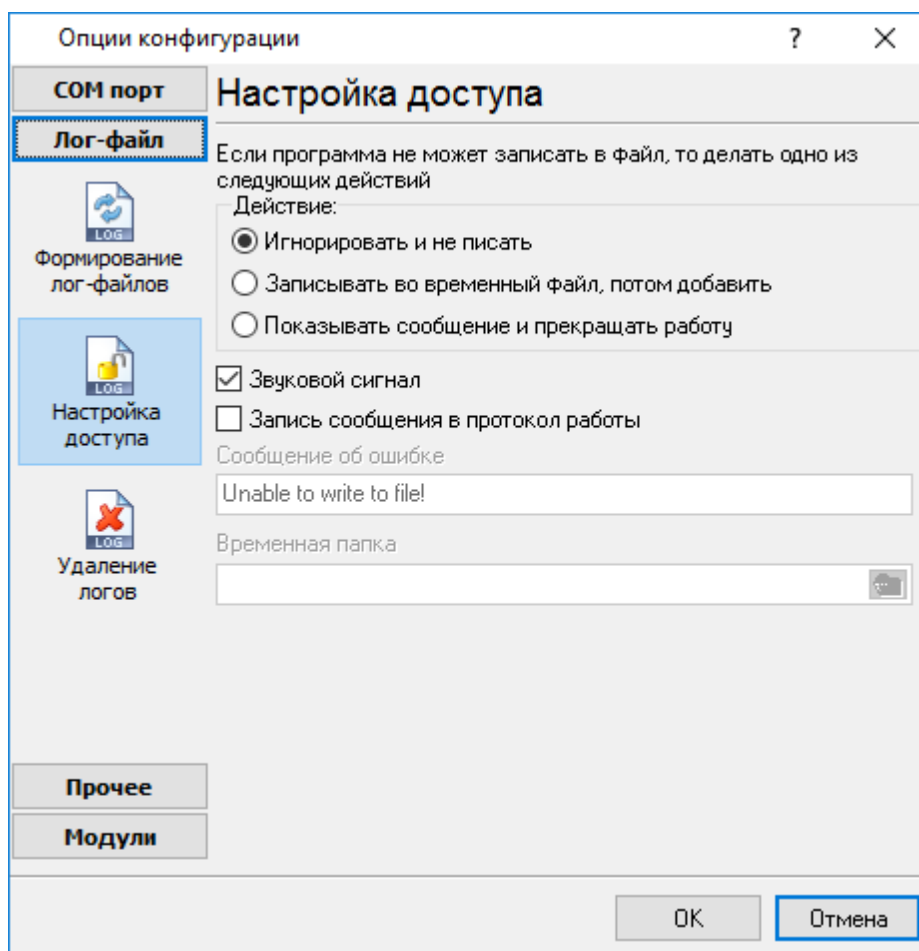
"

1.
2.
3. ( ) -
4. ( ).

```

### 5.3.2

Microsoft Office ( , Microsoft Word),  
Advanced Serial Data Logger



. 4.2.1.

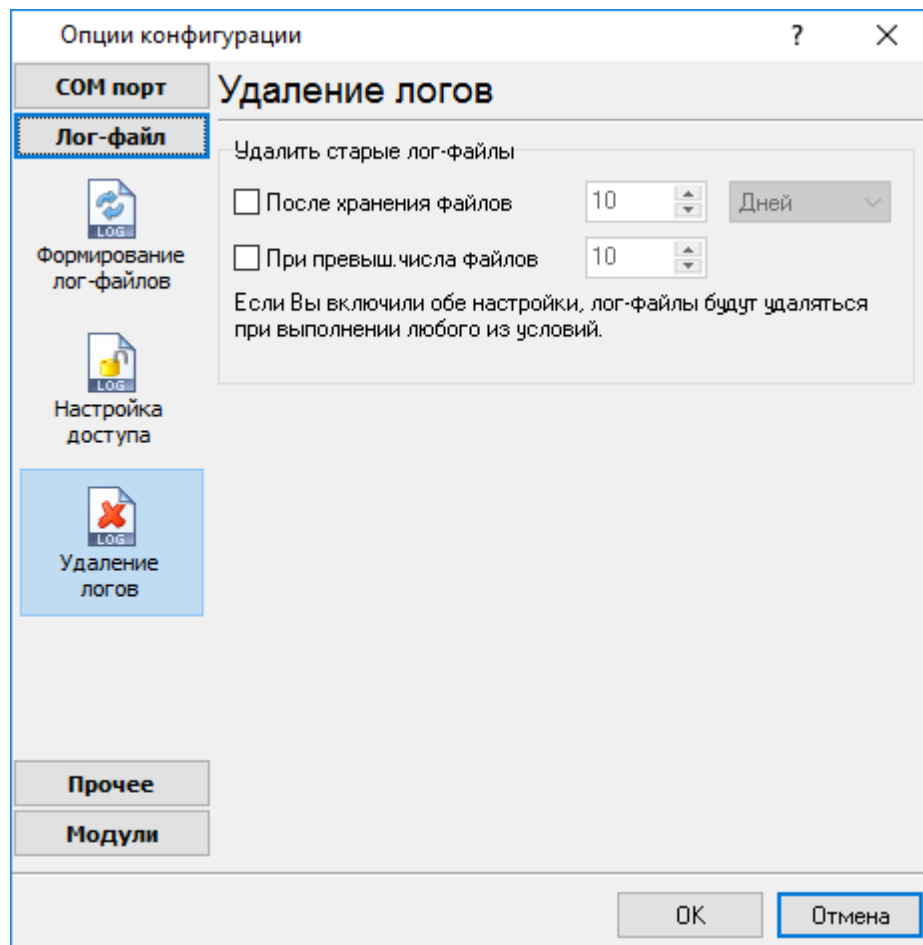
Advanced Serial Data Logger

( . 4.2.1),

- 
- 
-

## 5.3.3

(рис. 4.3.1).



. 4.3.1.

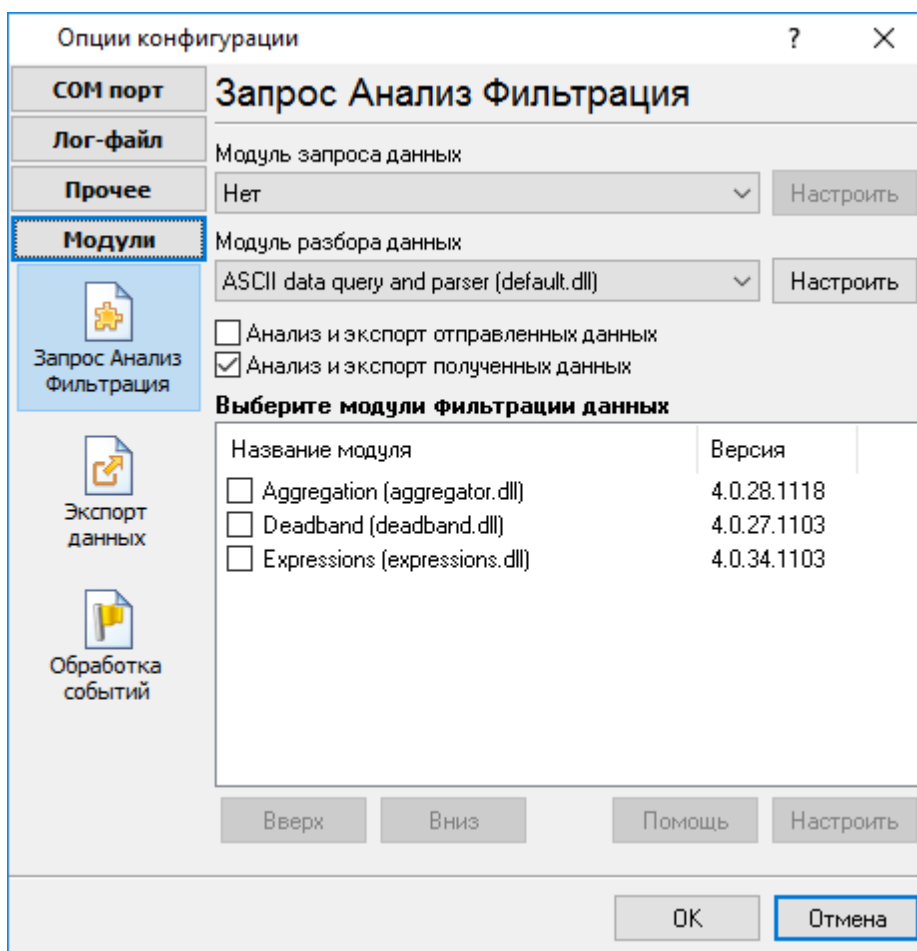
## 5.4

### 5.4.1

Advanced Serial Data Logger (ASDL) is a software application that records data from a serial device. It is used to capture and analyze data from various sensors and devices. The software is available in several versions, including ASDL 5.1.1 and ASDL 5.1.3.

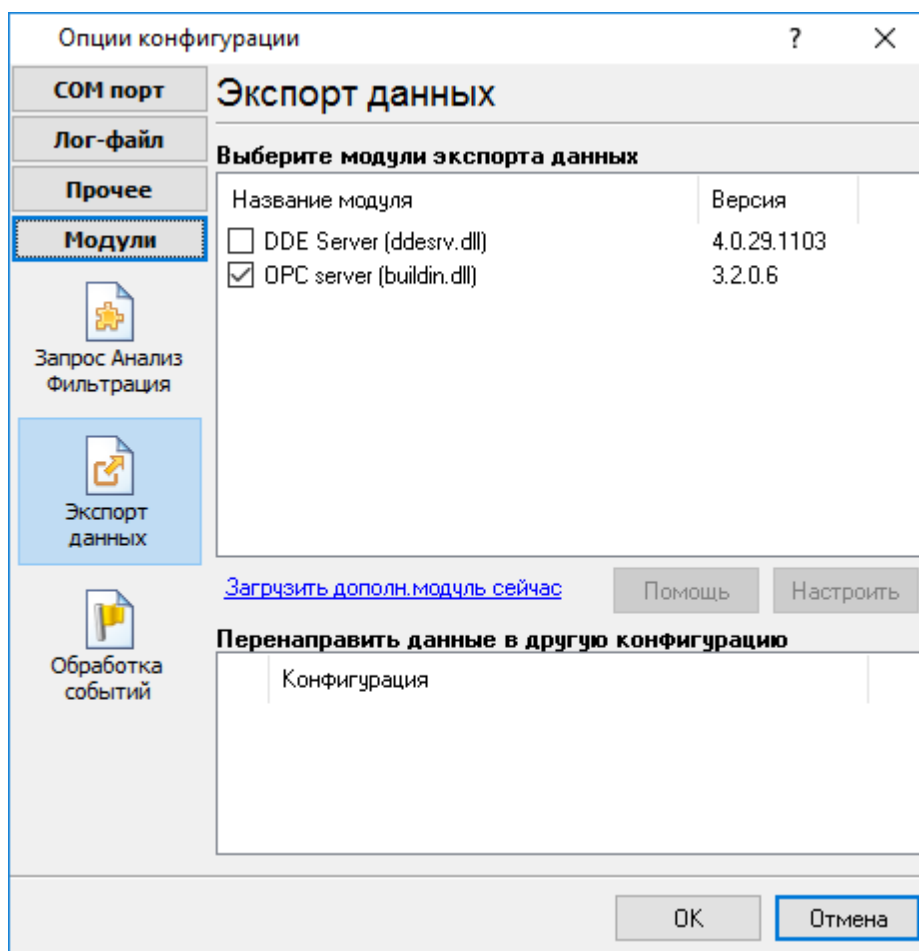
#### Advanced Serial Data Logger

- ASDL 5.1.1 - Advanced Serial Data Logger (ASDL) is a software application that records data from a serial device. It is used to capture and analyze data from various sensors and devices. The software is available in several versions, including ASDL 5.1.1 and ASDL 5.1.3.
- ASDL 5.1.3 - Advanced Serial Data Logger (ASDL) is a software application that records data from a serial device. It is used to capture and analyze data from various sensors and devices. The software is available in several versions, including ASDL 5.1.1 and ASDL 5.1.3.
- ASDL 5.1.1 - Advanced Serial Data Logger (ASDL) is a software application that records data from a serial device. It is used to capture and analyze data from various sensors and devices. The software is available in several versions, including ASDL 5.1.1 and ASDL 5.1.3.
- ASDL 5.1.3 - Advanced Serial Data Logger (ASDL) is a software application that records data from a serial device. It is used to capture and analyze data from various sensors and devices. The software is available in several versions, including ASDL 5.1.1 and ASDL 5.1.3.
- ASDL 5.1.1 - Advanced Serial Data Logger (ASDL) is a software application that records data from a serial device. It is used to capture and analyze data from various sensors and devices. The software is available in several versions, including ASDL 5.1.1 and ASDL 5.1.3.

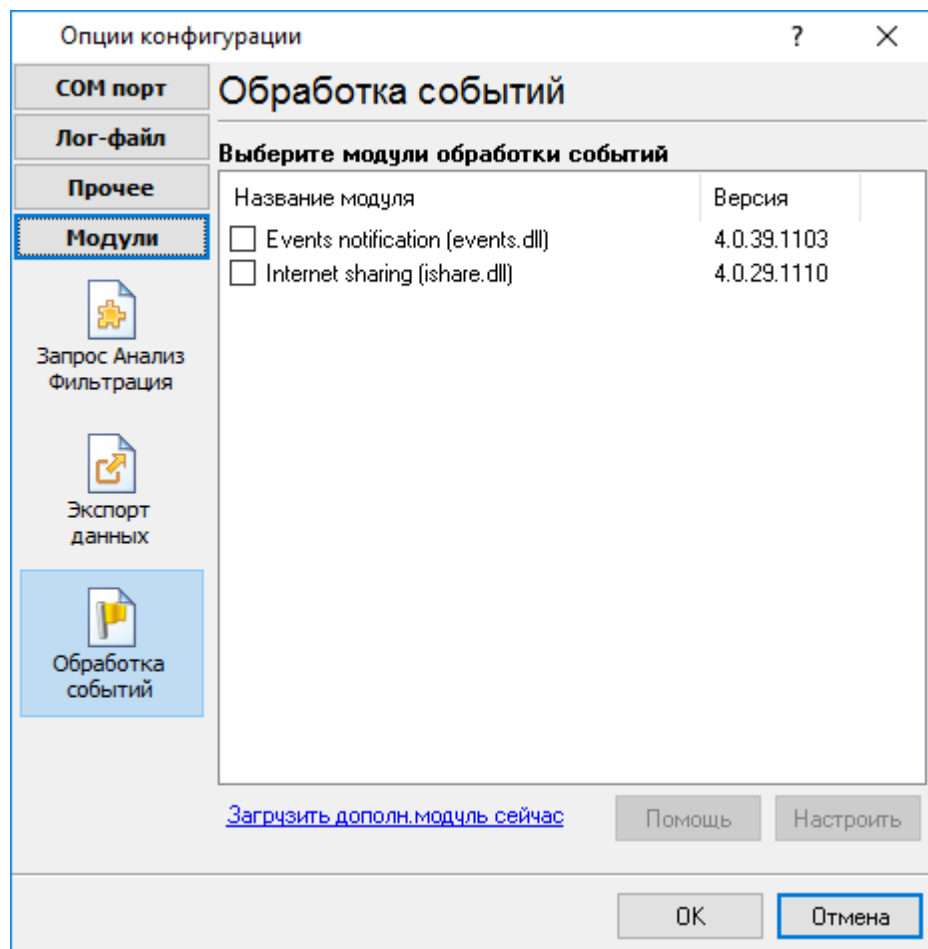


. 5.1.1.





. 5.1.2.

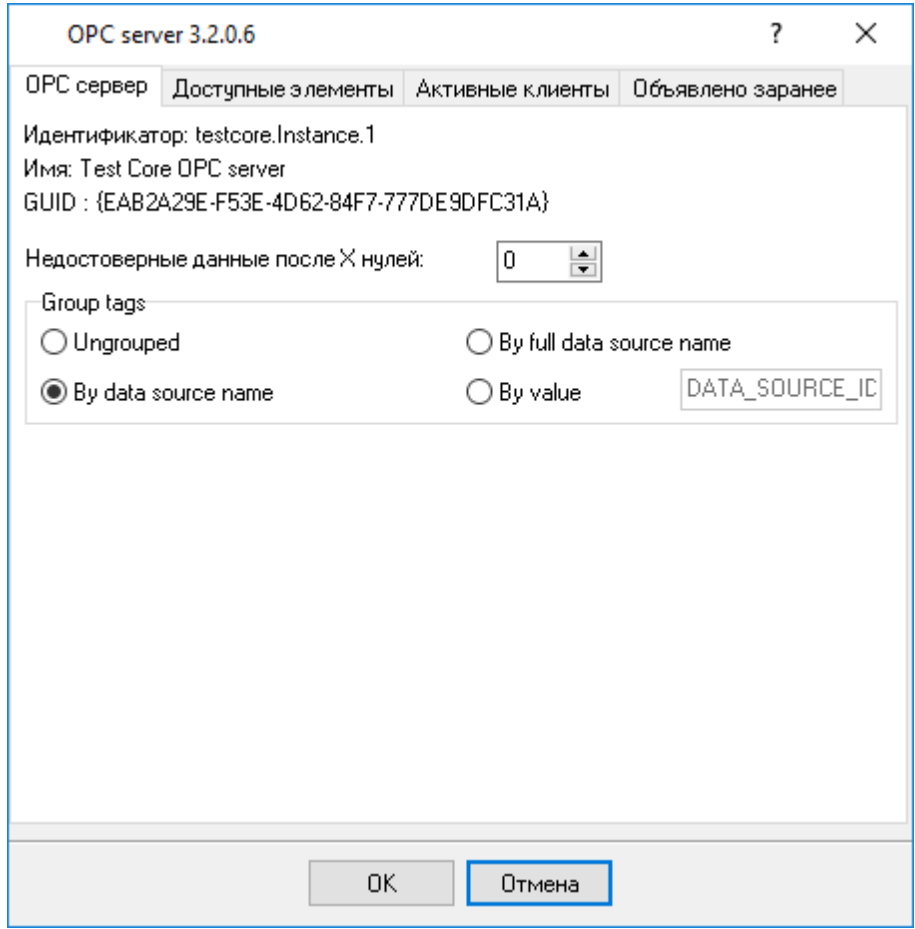


. 5.1.3.

"OK".

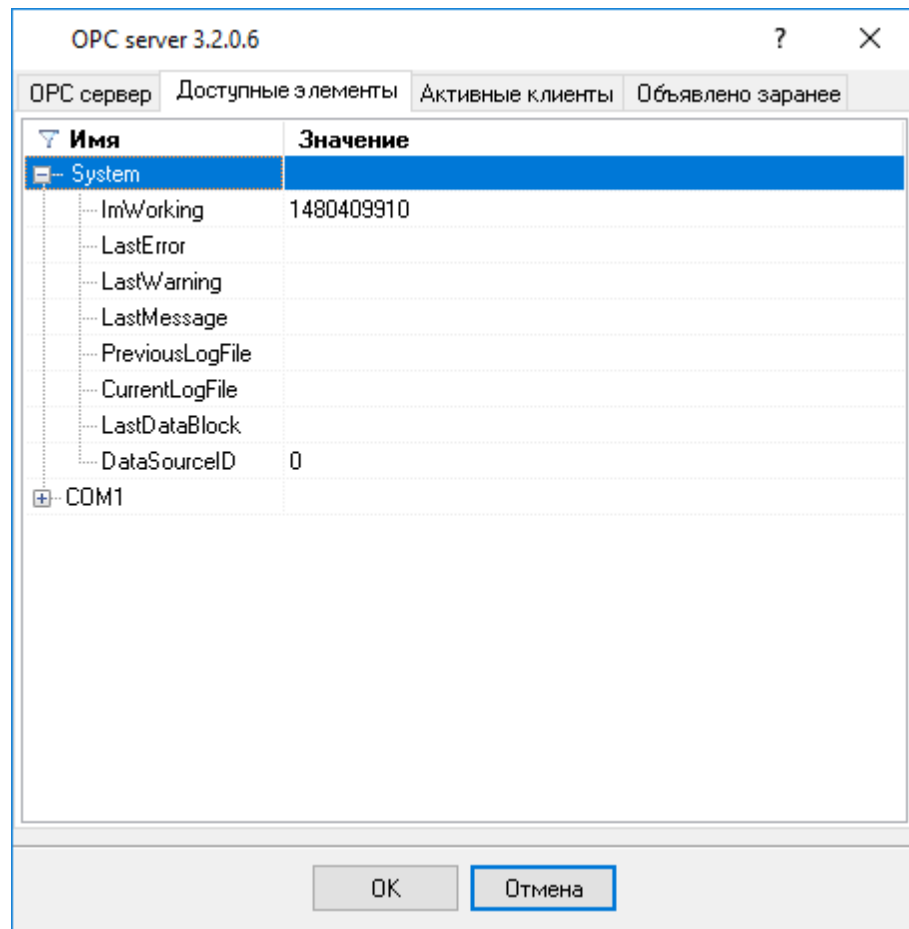
### 5.4.2 OPC

Advanced Serial Data Logger OPC, Advanced Serial  
Data Logger OPC ( . 5.2.1).  
OPC OPC Core Components Redistributable [www.opcfoundation.org](http://www.opcfoundation.org) (  
OPC OPC



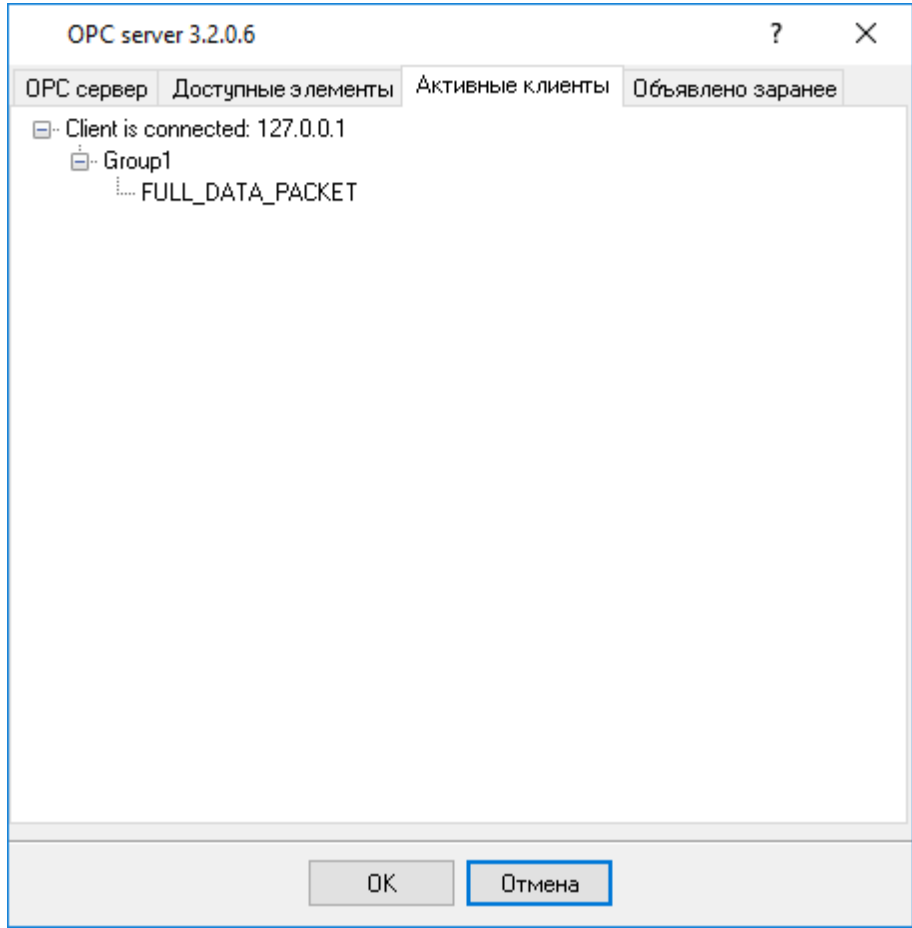
. 5.2.1. OPC

Advanced Serial Data Logger, OPC ( .2). OPC



. 5.2.2.

OPC



. 5.2.3.

Advanced Serial Data Logger

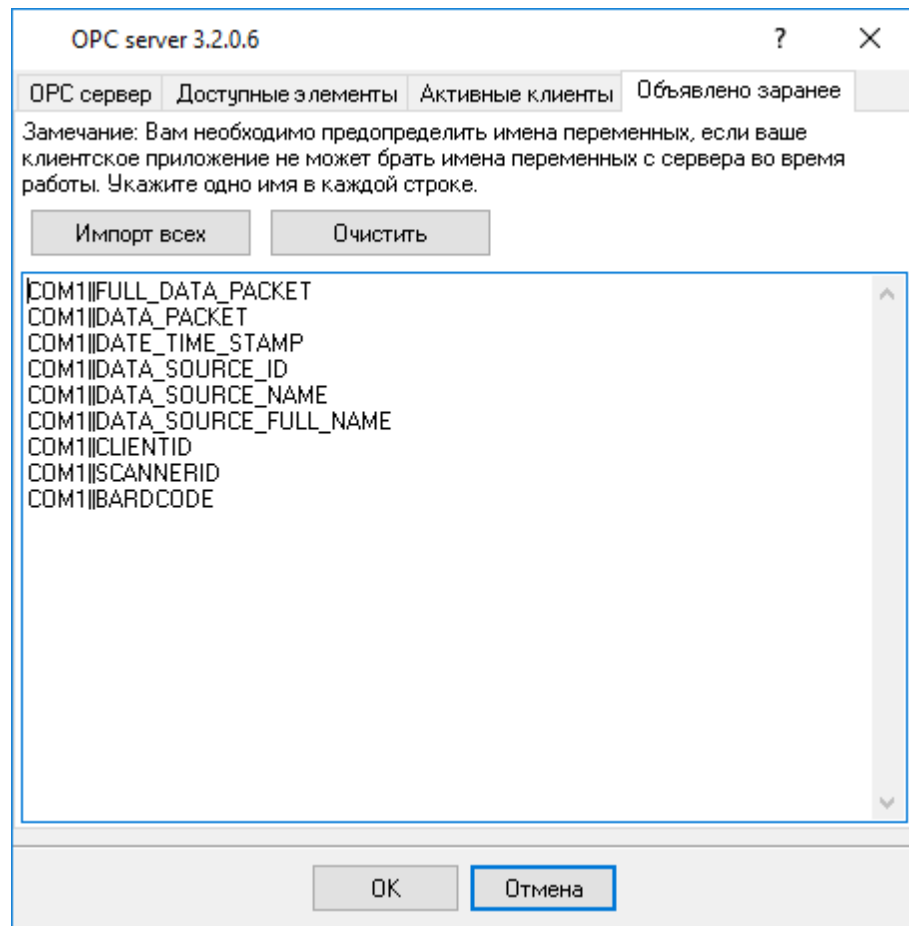
"

". Advanced Serial Data Logger

OPC

( .4).

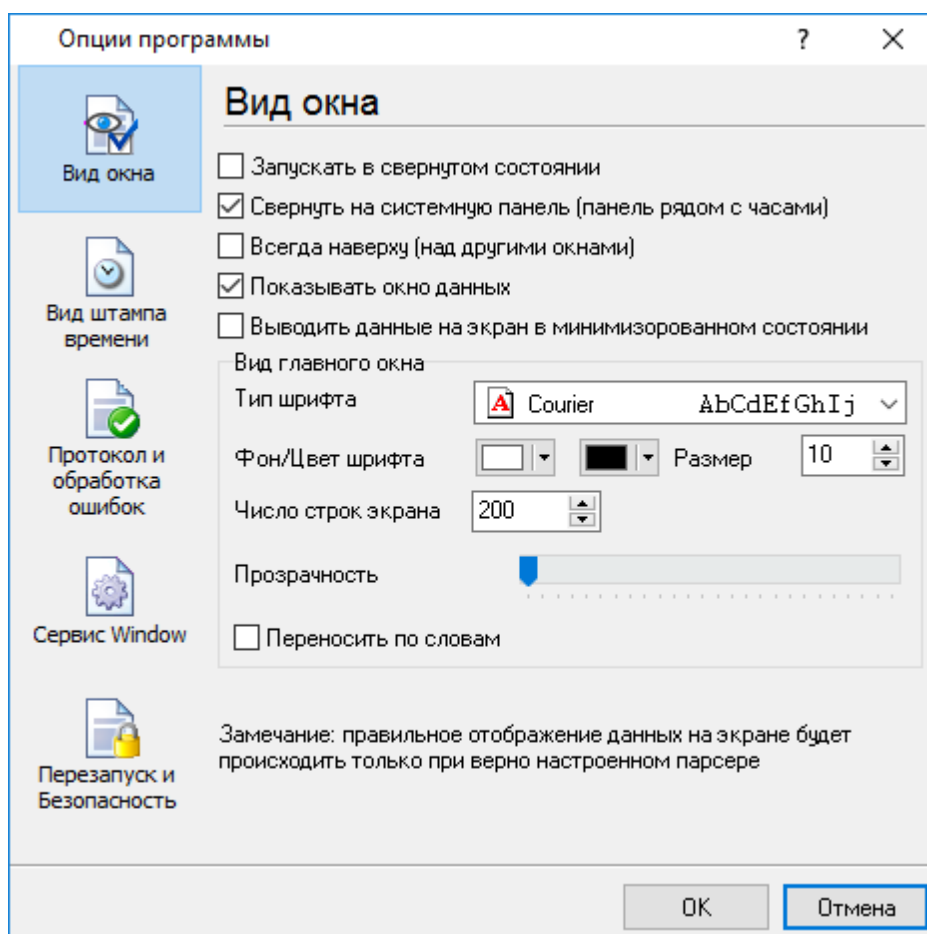
OPC  
OPC



. 5.2.4.

## 5.5

## 5.5.1



. 6.1.1.

" ( . 6.1.1) :

- Advanced Serial Data Logger

( . 6.1.2) ;



. 6.1.2.

-

( . 6.1.2) -

Advanced Serial Data Logger

;

,

-

;

-

/

.

.

-

,

.

;

-

(

,

,

);

-

;

- Windows 2000

.

-

,

-

.

-

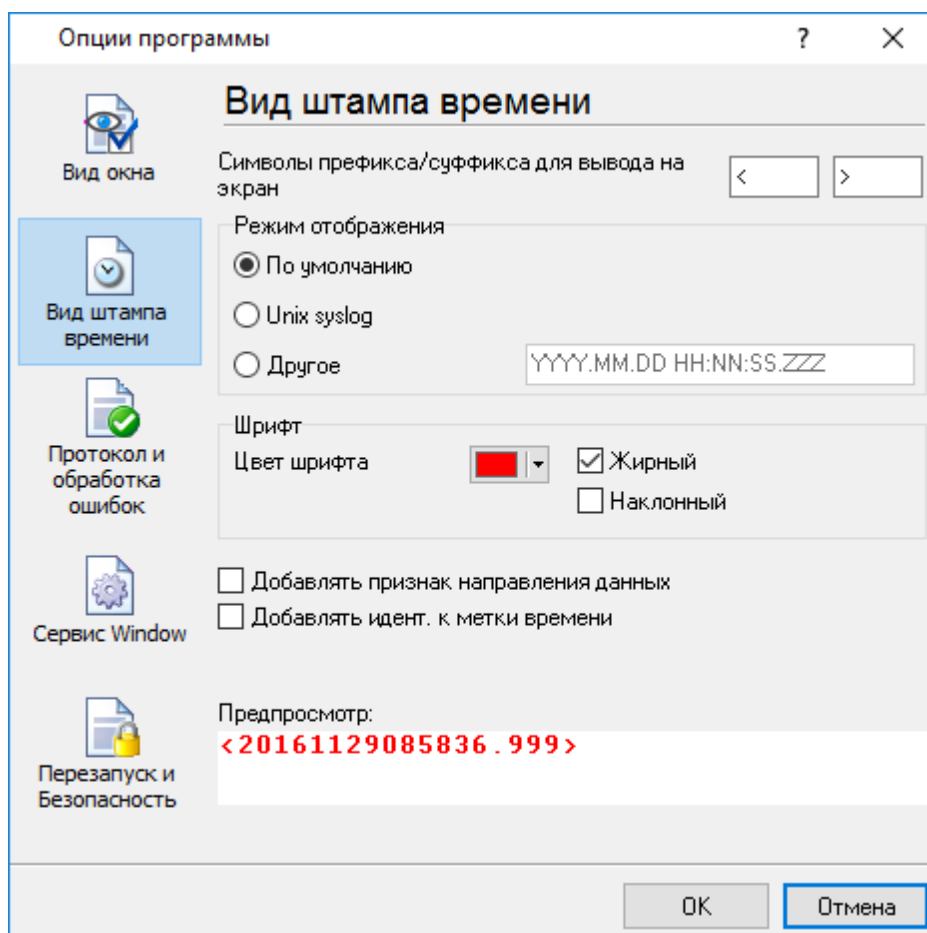
,

.



## 5.5.2

( . 6.2.1)



. 6.2.1.

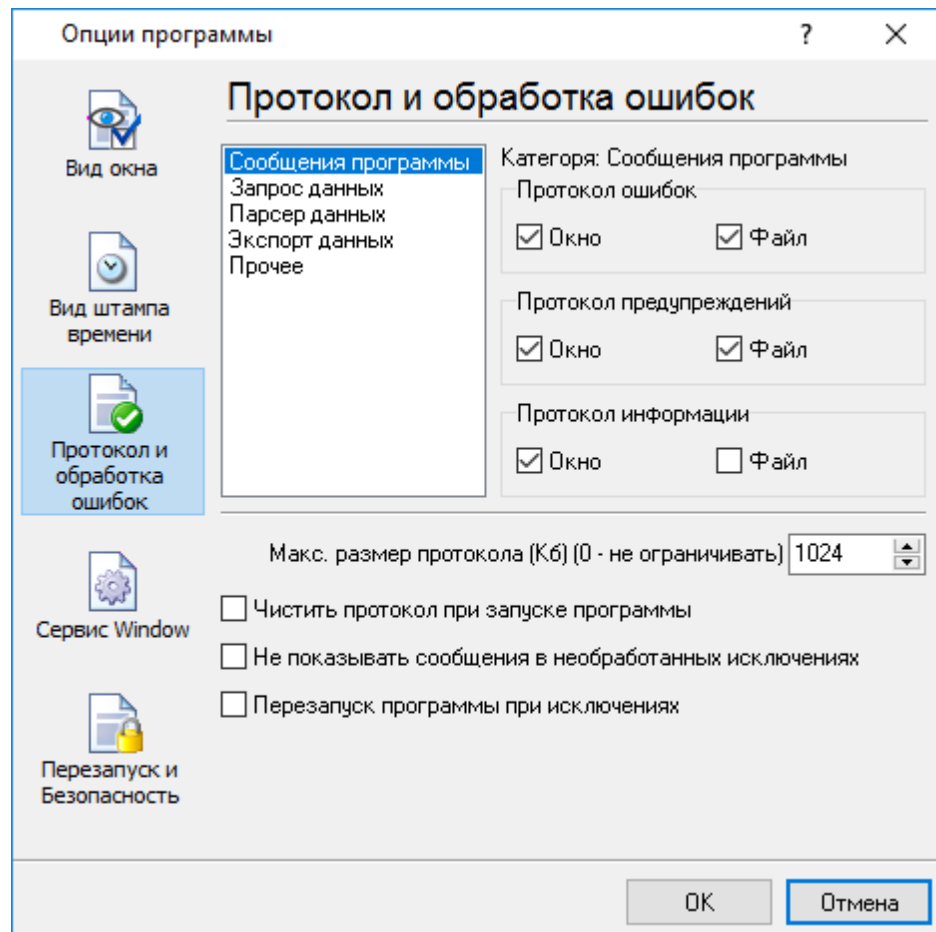
19

TX

RX

, COM1.

## 5.5.3



. 6.3.1.

Advanced Serial Data Logger

3-

- 
- 
-

- ; - ,
- - , ;
- - , ;
- - , ;

/

Advanced Serial Data Logger

5.5.4  
5.5.4.1

**Windows 2000**

( ) Windows :

- 2000 ); ( Windows
- - ( );
- ; ,
- ;

).

( Windows Vista  
(elevated)

" " " **Windows**" ( . 6.4.1).

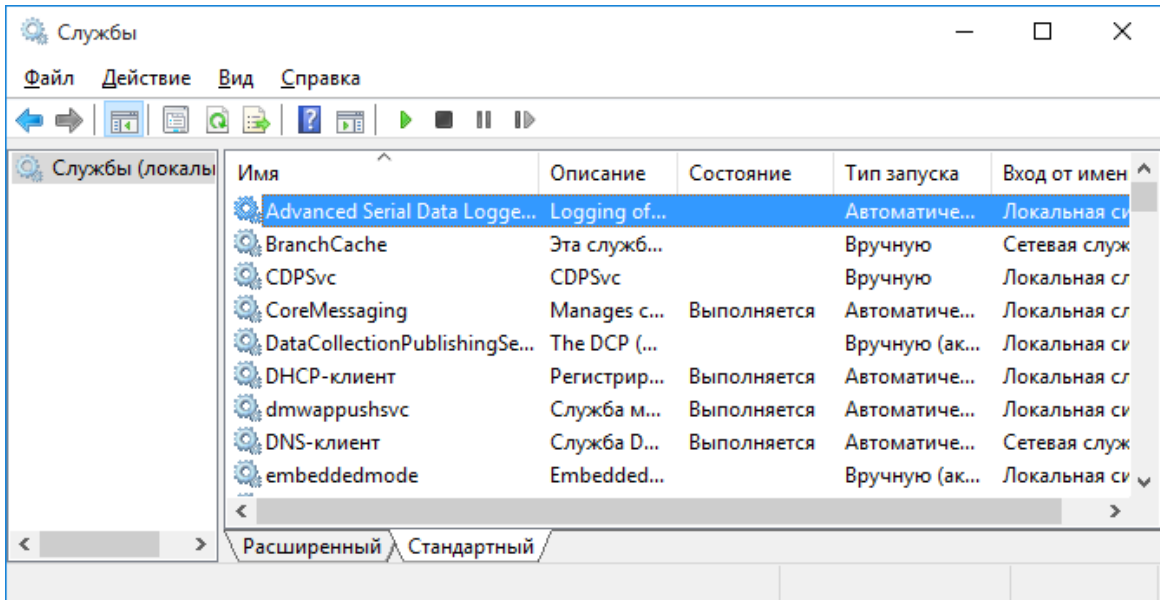




. 6.4.2

Advanced Serial Data Logger, " ' " ( . 6.4.1)

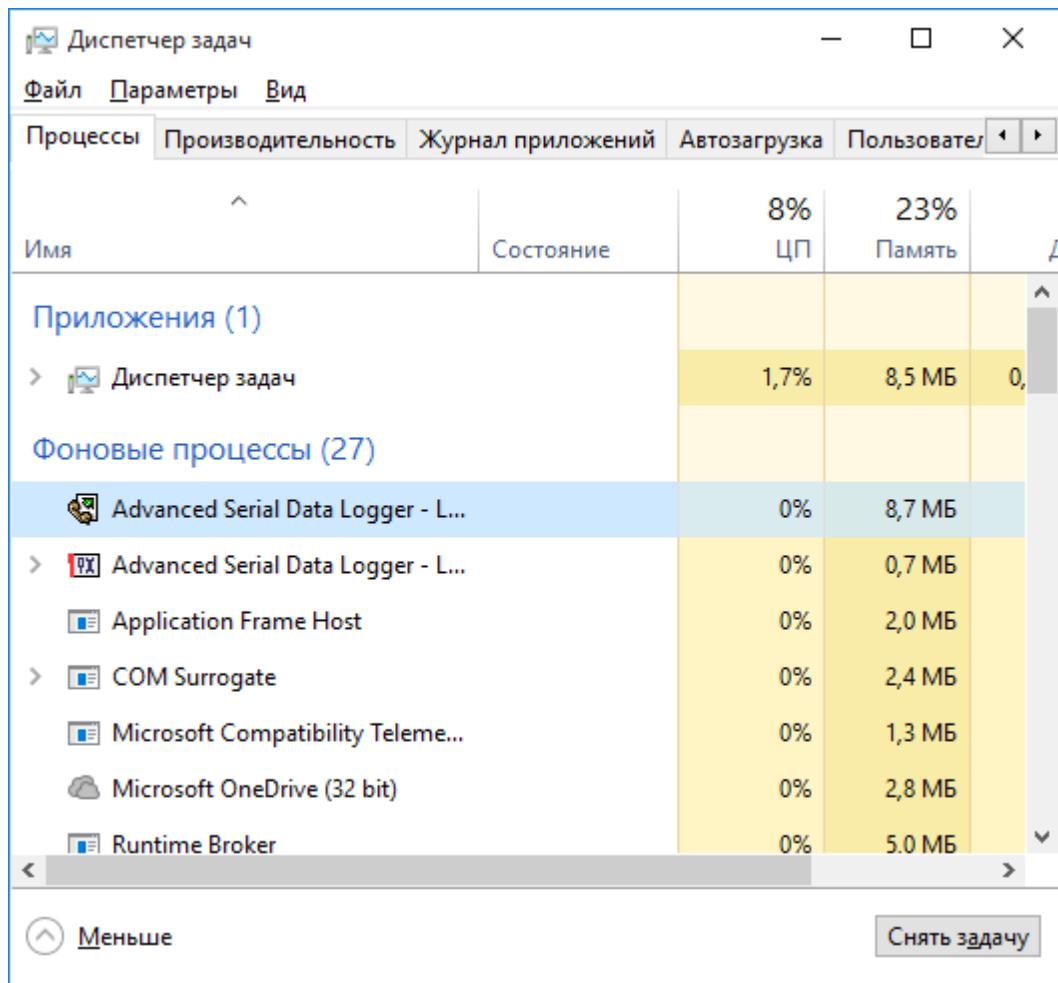
' " " ' ( . 6.4.3).



. 6.4.3. ( Windows 2000)

( . 6.4.4). 2 - asdlogsrv.exe asdlog.exe

Advanced Serial Data Logger,  
svany.exe



. 6.4.4.

srv.exe

:

asdlog

- /? - ;
- /I - ;
- /A - ;
- /D - ;
- /R - ;

## 5.5.4.2

## Windows Vista

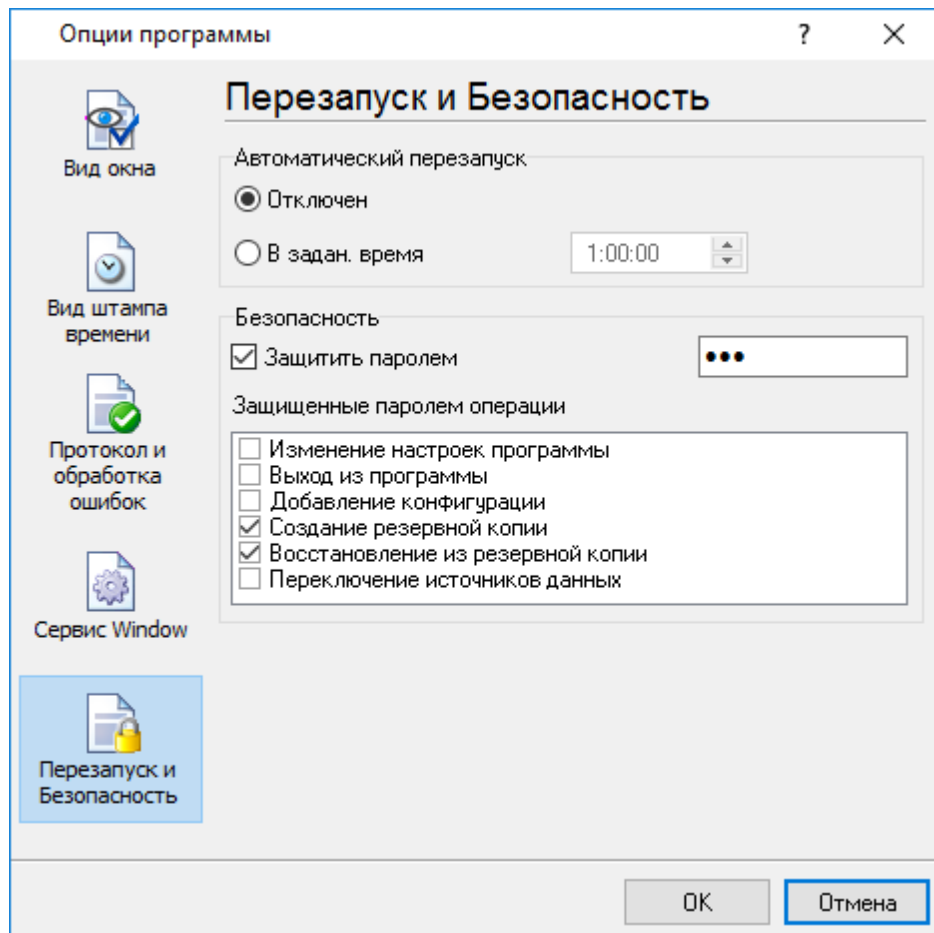
Windows Vista

Windows.

- : Interactive Services Detection
- : UIODetect
- : UIODetect.exe
- :
- : %windir%\system32\UIODetect.exe
- :
- \* Home Basic:
- \* Home Premium:
- \* Business:
- \* Enterprise:
- \* Ultimate:

5.5.5

( . 6.5.1).



. 6.5.1.

7

?

7.1

[support@aggsoft.ru](mailto:support@aggsoft.ru)

SoftIce



