



SNMP Data Logger

1		1
1	SNMP Data Logger	1
2	2
2	,	3
1	3
2	4
3	4
4	5
3		5
1	5
2	5
4		6
1	6
2	7
3	8
4	9
5	9
5		10
1	SNMP	10
	10
	11
	13
	15
2	16
	16
	18
	20
3	-	21
	-	21
	-	24
	26
4	27
	27
	OPC	30
5	35

Windows 2000

Windows Vista

6

?

44

1

1

1.1 SNMP Data Logger

SNMP —

TCP/IP.

SNMP (" " " ").

SNMP Data Logger

Access, Oracle ODBC

, MSSQL, MySQL, DDE, Excel

SNMP Data Logger?

SNMP Data Logger

SNMP

SNMP Data Logger:

- SNMP
- SNMPv1. ASN.1 (Abstract Syntax Notation One) GetRequest, GetNextRequest
- MIB-II.
-
-
-
-
-
- DDE OPC
- MS Excel. MS Excel;
- Oracle ODBC- MSSQL, MySQL,
-
-

- Windows, x32, x64.
- Windows. SNMP Data Logger Windows NT/2000/XP,

-
-

: <http://www.aggsoft.ru/>
: <http://www.aggsoft.ru/snmp-data-logger/>

1.2

ASCII - ASCII -
Windows
ASCII. ASCII *.TXT (README.TXT).
Binary File - ASCII (0 255).
Bytes () - : 0 1. 8
Bit () - 8 ()
Cable () -
Internet () - TCP/IP
PC () - Personal Computer ()
Ports () -
Protocol () -
(Log file) - (.log) —

2

2.1

Copyright © 1999-2016 AGG Software.
All Rights Reserved

1. SNMP Data Logger

2.

3. SNMP Data Logger

4.

5. SNMP Data Logger
sales@aggsoft.ru

6. SNMP Data Logger

SNMP Data Logger

7. **SNMP Data Logger**

"AS IS".

8.

9.

SNMP Data Logger

10.

SNMP Data Logger
SNMP Data Logger.

2.2

shareware-

_____ [4]

- 21 ;
- ;
- 100 ;

2.3

shareware-

_____ [3]

Internet, _____

2.4

SNMP Data Logger	support@aggsoft.ru
	support@aggsoft.ru
	sales@aggsoft.ru

3

3.1

:

- Windows 2000 Professional SP 4;
- Windows 2000 Server;
- Windows XP x86 x64;
- Windows 2003 Server x86 x64;
- Windows Vista () x86 x64.
- Windows 7 () x86 x64.
- Windows 2008 Server () x86 x64.
- Windows 8 () x86 x64.

3.2

SNMP Data Logger.

Logger" , SNMP Data Logger "Programs Files\SNMP Data
 ,
 SNMP Data Logger ,
 _____.

4

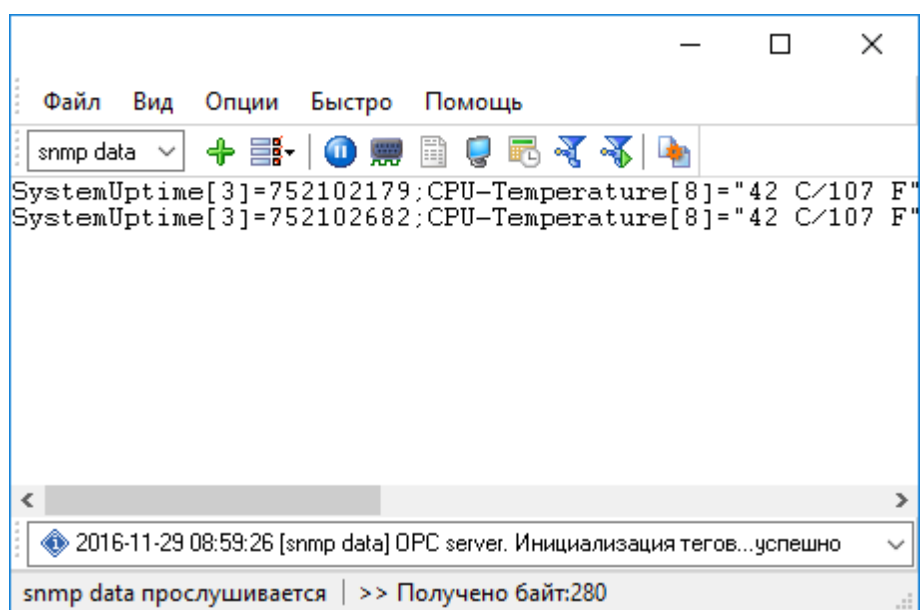
4.1

SNMP Data Logger

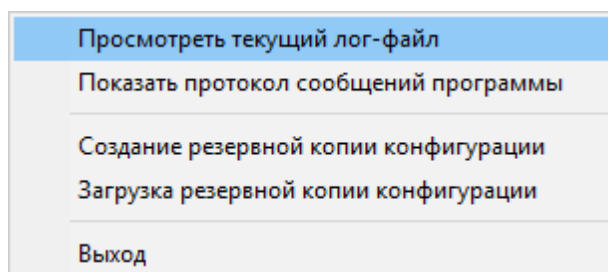
SNMP Data Logger

(. 1.1.1),

1.1.2) (" ..."), " ("



. 1.1.1.



. 1.1.2.

C:\. [7]

1-2-3-4

1.

" " SNMP "SNMP"

2.

().
" " ()
).

3.

[27]

4.

SNMP Data Logger

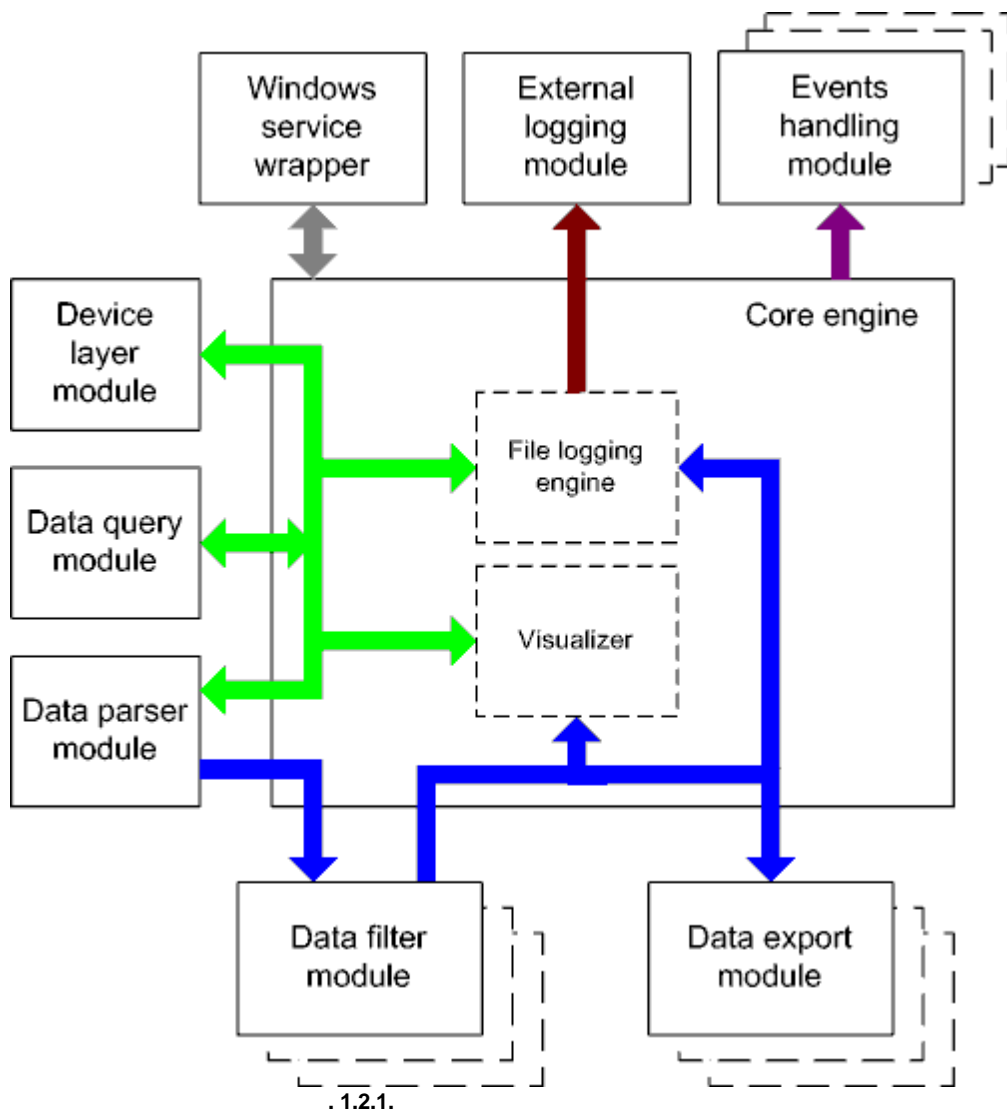
SNMP Data Logger

4.2

[21]
[24] [6]
SNMP Data Logger [16], [35]

SNMP Data Logger. SNMP Data
Logger _____ (plug-ins),
"_____.
_____.1.1.1_____.
_____. (_____.1.1.1_____.),

4.3



- :
- - ().
 - - ().
- ,
- Core engine -
 - Device layer module -
 - Data query module -
 - Data parser module -
 - Data filter module -
 - Data export module -
 - Visualizer -
 - File logging engine -
 - Windows service wrapper -
 - External logging module -
 - Events handling module -

4.4

Windows.

4.5

- 1.
 - 2.
1. " " " " Windows.
 2. regedit.exe Windows.
- Windows x64
 HKEY_LOCAL_MACHINE\SOFTWARE\Wow6432Node\AGG Software\SNMP Data Logger
- Windows x32

HKEY_LOCAL_MACHINE\SOFTWARE\AGG Software\SNMP Data Logger

- 3. " "
 - :
 - Ctrl+S - " / " ;
 - Ctrl+D - " / " ;
 - Ctrl+P - ;
 - Ctrl+L - log- ;
 - Ctrl+R - ;
 - Ctrl+E - Windows;
 - Ctrl+M - , .
- 4. , .
- 5. INI .
- 6. " " .
- 10 , .

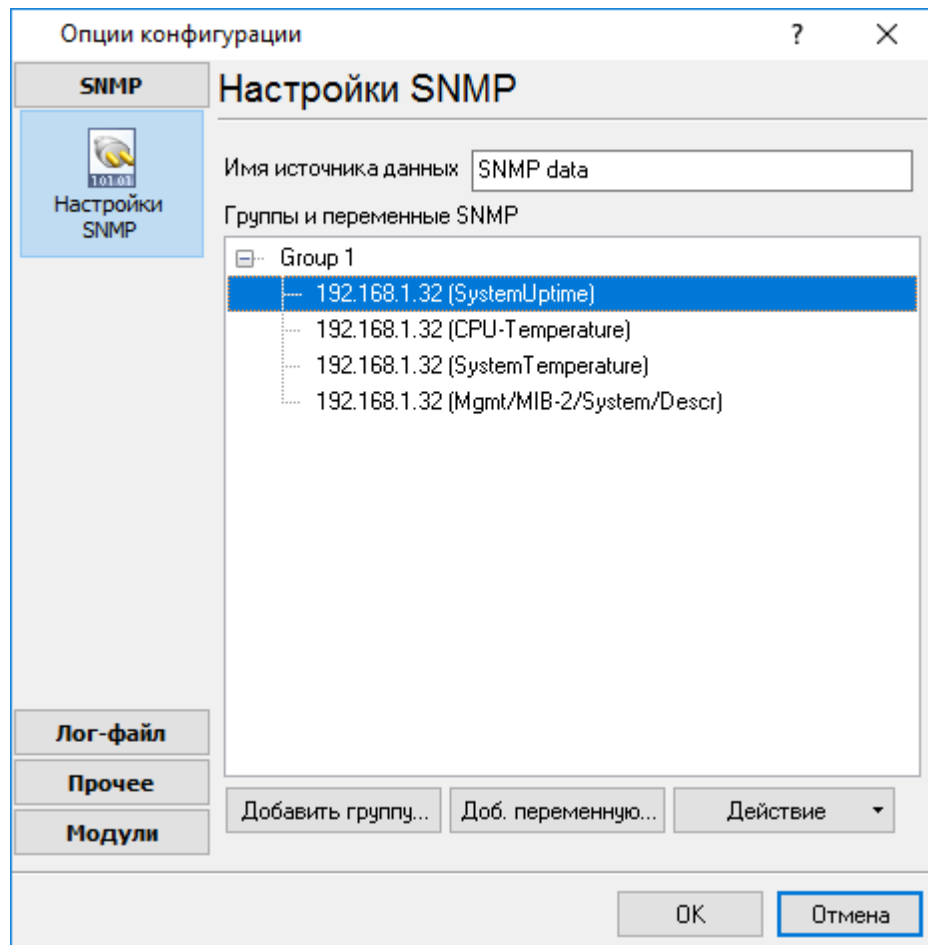
5

5.1 SNMP

5.1.1

- SNMP, :
- 1. , . 2,
- 2. ; , .
- 3. " _____ [13] ,
- 4. , . 1, _____ [13] . 4;

5.1.2



.1.

.1.

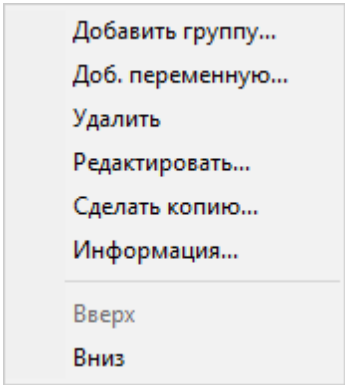
ASCII.

- Data source #<

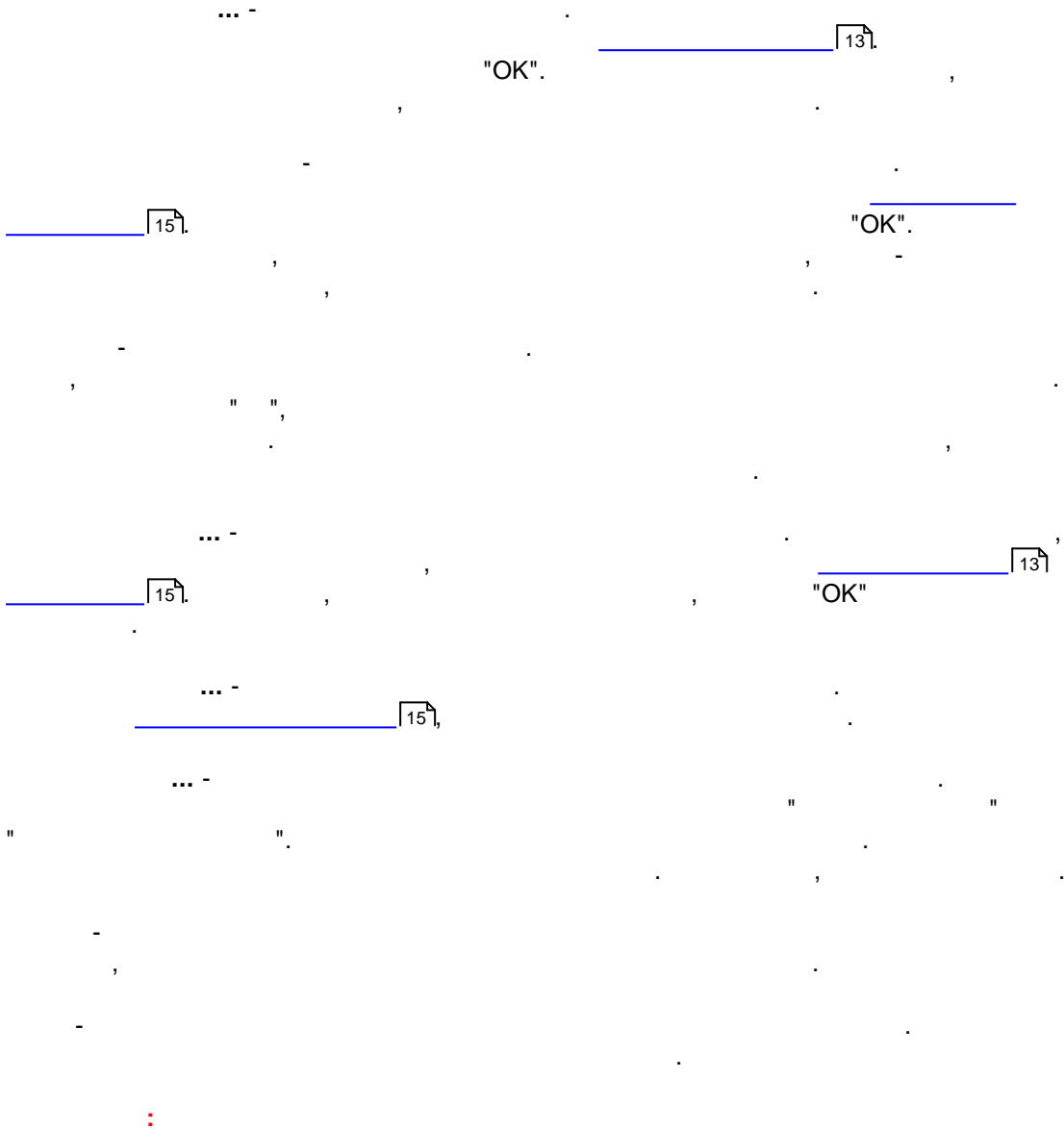
>.

.2 (

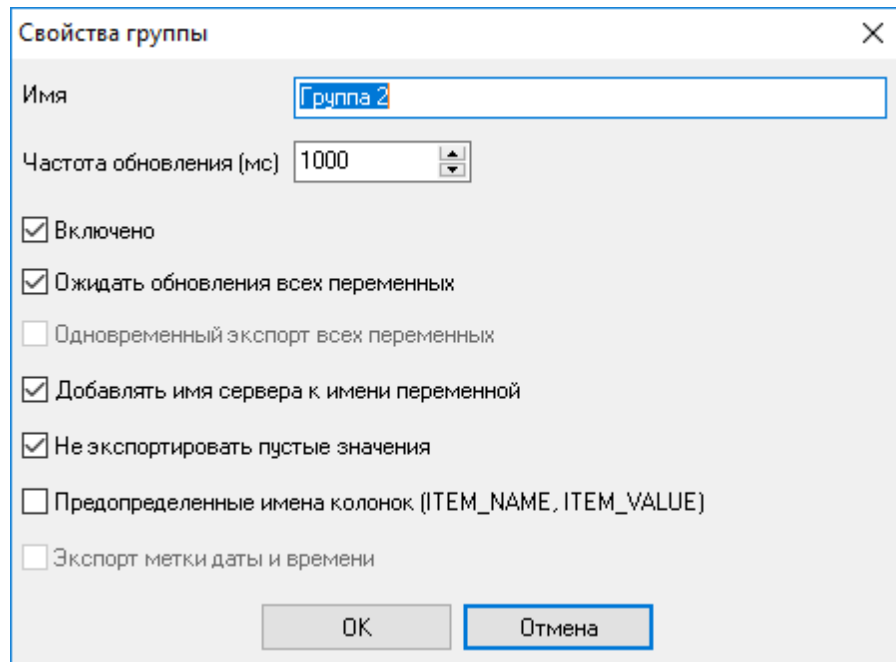
).



. 2.



5.1.3



. 3.

< > - Group

SNMP- () - 1000, . . . 1

SNMP-

2

(

).

(ITEM_NAME, ITEM_VALUE) -
ITEM_NAME[< >]="< >"; ITEM_VALUE[< >] =
"< >".
ITEM_NAME, ITEM_VALUE.

ITEM_NAME[256]=".iso.org.dod.internet.private.enterprises.2162.1.2.0";ITEM_VALUE[8]
="computerName"
ITEM_NAME[256]=".iso.org.dod.internet.private.enterprises.2162.1.3.0";ITEM_VALUE[8]="1"

ITEM_DATETIME_STAMP[7]=01.03.2010 15:52:00;ITEM_NAME[256]=".iso.org.dod.internet.
private.enterprises.2162.1.2.0";ITEM_VALUE[8]="computerName"
ITEM_DATETIME_STAMP[7]=01.03.2010 15:52:00;ITEM_NAME[256]=".iso.org.dod.internet.
private.enterprises.2162.1.3.0";ITEM_VALUE[8]="1"

5.1.4

Свойства переменной

Сервер (имя или IP) 192.168.1.111

Порт 161 Ожидание ответа (мс) 500

Сообщество public Version SNMPv2c

Получить список переменных из:

Удаленное устройство

Базовый OID .1.3.6.1.2.1 Получить переменные

Файл MIB

Выб	OID	Имя	Тип данных	Имя для
<input type="checkbox"/>	.1.3.6.1.2.1	Mgmt	Undefined	Mgmt
<input type="checkbox"/>	.1.3.6.1.2.1.1.1.0	Mgmt/MIB-2/	Octet string	Mgmt/MIB-2
<input checked="" type="checkbox"/>	.1.3.6.1.2.1.1.2.0	Mgmt/MIB-2/	Object ID	Mgmt/MIB-2
<input type="checkbox"/>	.1.3.6.1.2.1.1.3.0	Mgmt/MIB-2/	Time ticks	Mgmt/MIB-2
<input type="checkbox"/>	.1.3.6.1.2.1.1.4.0	Mgmt/MIB-2/	Octet string	Mgmt/MIB-2

Указать OID вручную

OID .1.3.6.1.2.1.1.2.0

Тип данных Object ID

Имя для экспорта Mgmt/MIB-2/System/ObjectID

OK Отмена

. 4.

(IP) - IP- URL- (: www.aggsoft.com), IP-

(: 192.168.1.1). 10

- localhost.

- 161. ().

(Community) - ("public")

- public. : "public"

10

OID - SNMP
 ".1.3.6.1.2.1", MIB-II. MIB
 (Management Information Base)

SNMP.

. 5. (, .iso.org.dod.internet.private.enterprises).

SNMP.

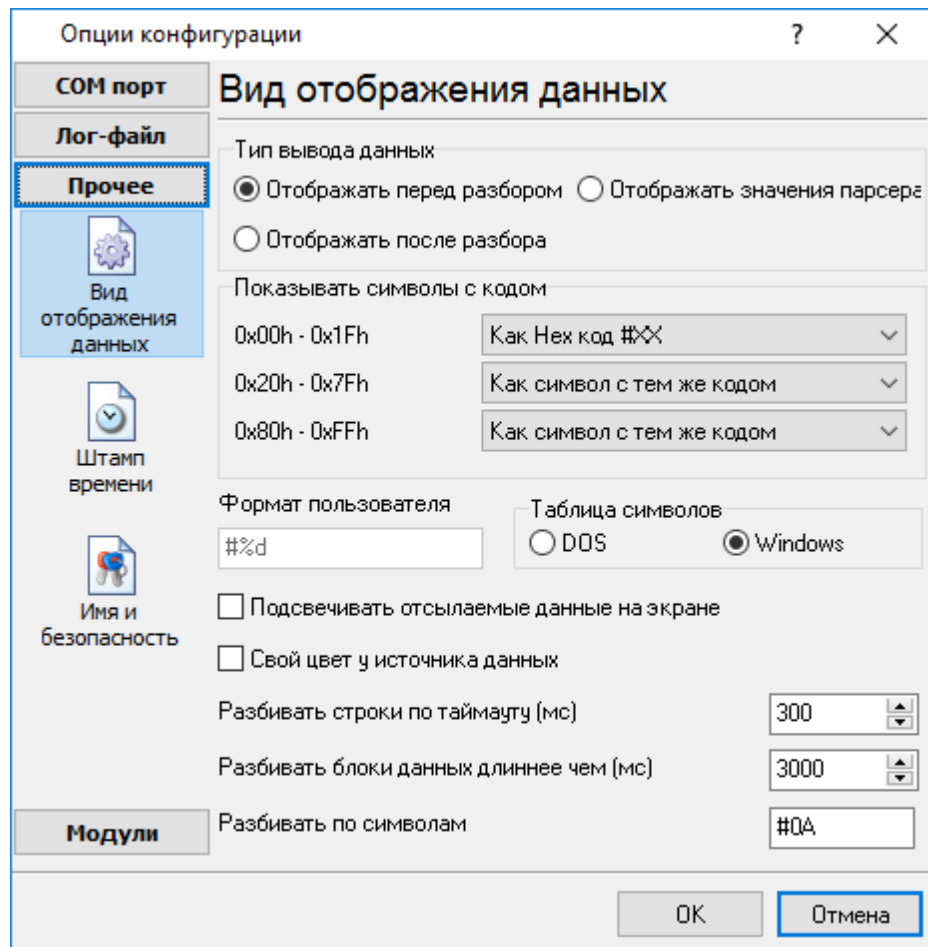
5.2

5.2.1

3.1.1): (.1.1.1⁶) 2 (.

1.

2.



. 3.1.1.

" - " (. 3.1.1)

Hex-

,%d

,%x -

: Windows DOS

(OEM).

0,

0,

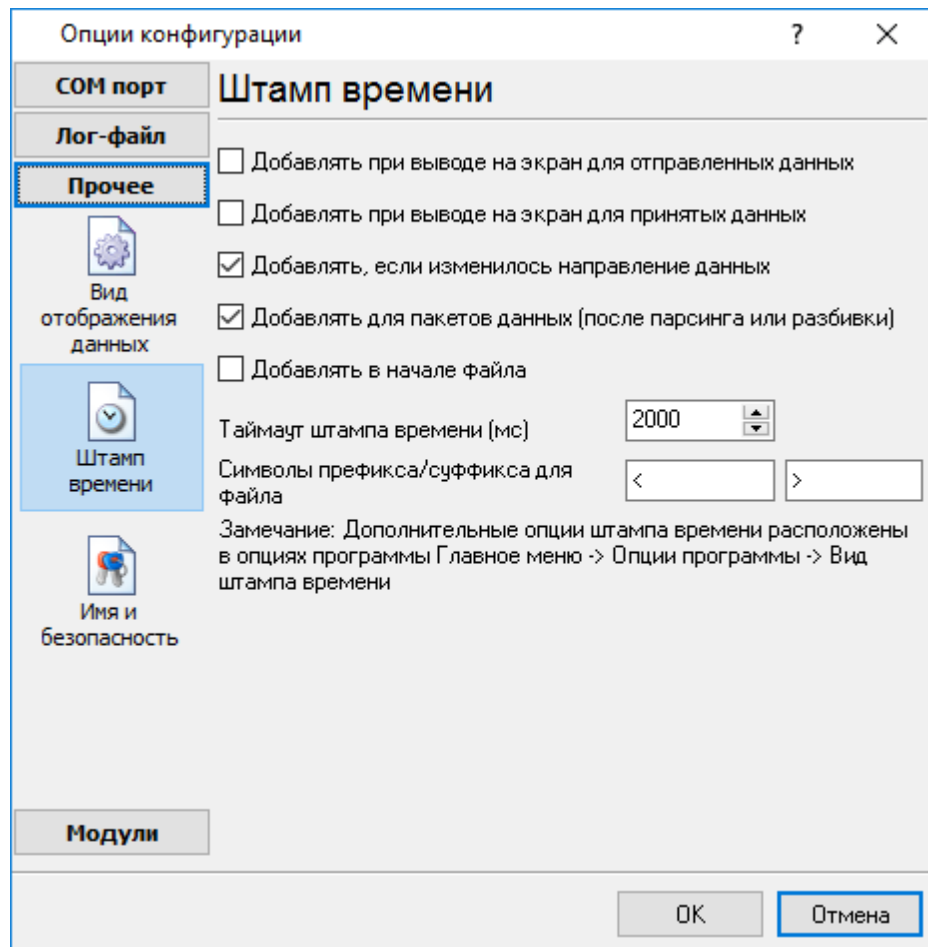
. 3.1.1

5.2.2

(. 3.2.1)

()

 37.



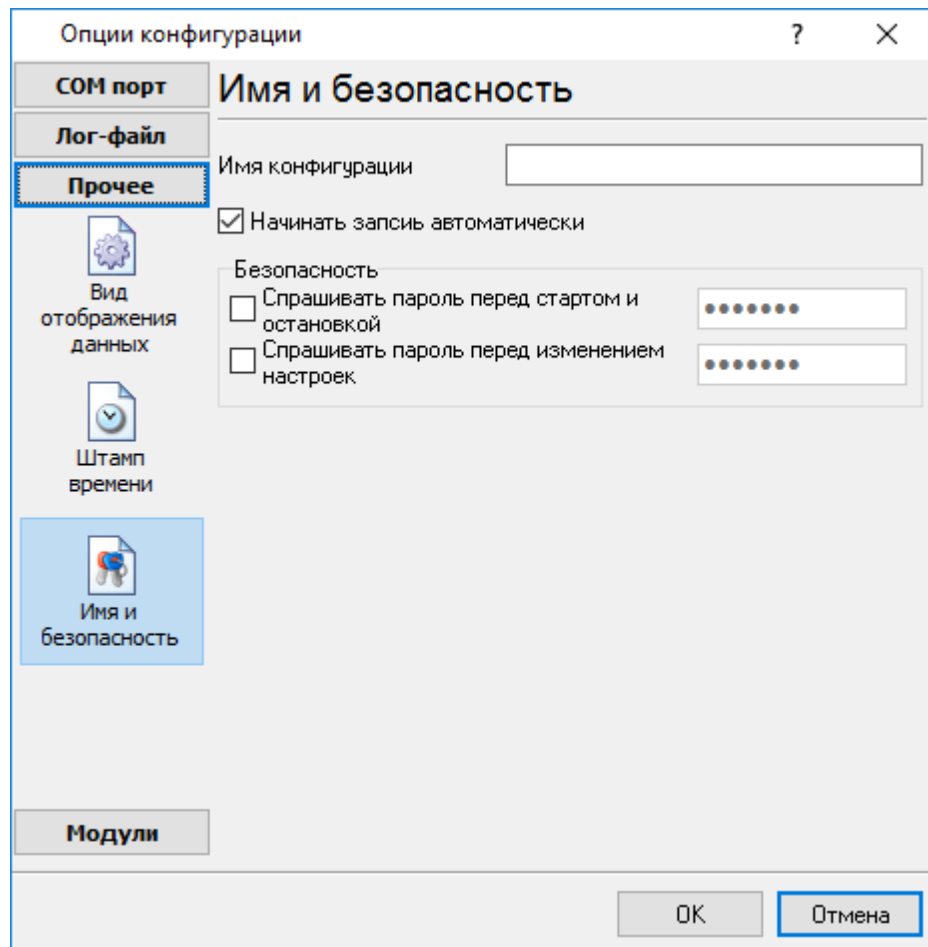
. 3.2.1.

:>#0D#0A

5.2.3

(. 3.3.1)

-
.
-
.
"
"
,
43,
"
/
"
-
.
-
.



. 3.3.1.

5.3

-

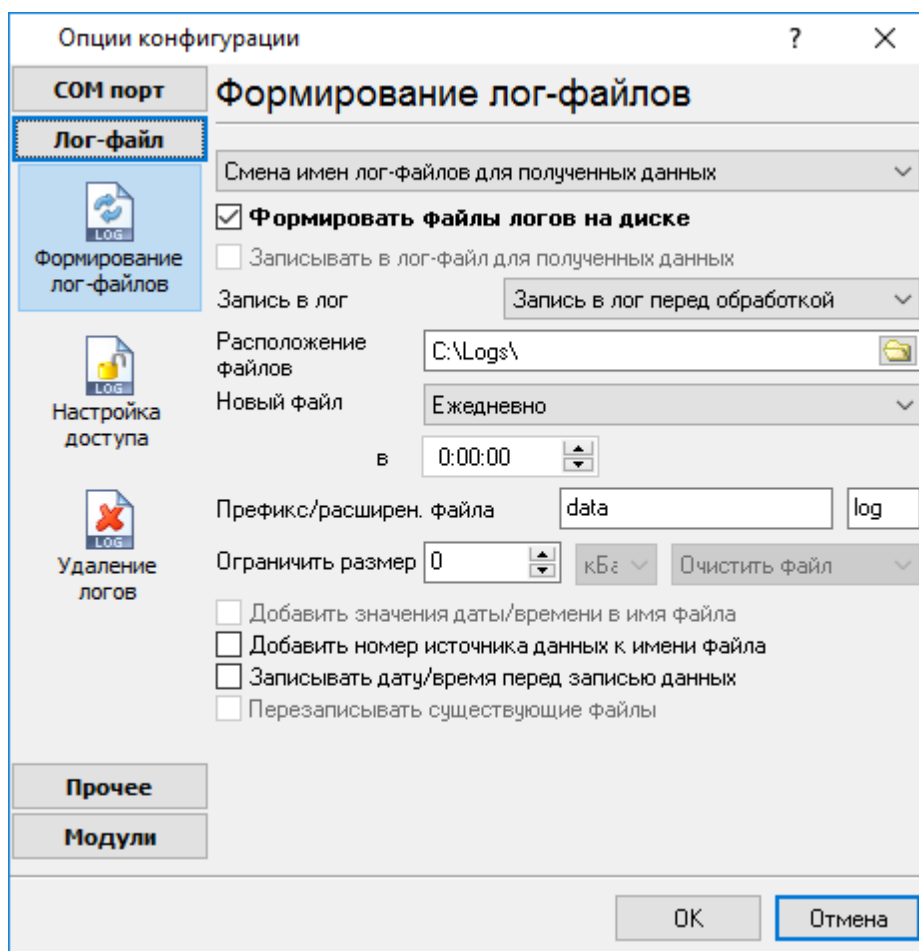
5.3.1

-

-

(. 4.1.1).

- ().



. 4.1.1.

"OK".

SNMP Data Logger

"sample",

"log ",

```

"sampleYYYYMMDD.
log". 21- 2003 - "sample20030321.log".
( ).
, , , .
" " :
1. - , .
DDMMYYYY, DD - , MM -
YYYY - ;
2. - .
MMYYYYY;
3. -
YYYYMMDD;
4. -
, . : sample00000001.log.
5. - ;
6. - .
WWYYYYY, WW -
, YYYY -
7. - ,
;
8. - .
HHDDMMYYYYY;
9. - -
, .
:
d - , (1 - 31);
dd - , (01 - 31);
ddd - ( - ) ,
;
dddd - ( - )
;
m - , (1 - 12);
mm - , (01 - 12);
mmm - ( - ) ,
;
mmmm - ( - ) ,
;
yy - (00 - 99);
yyyy - (0000 - 9999);
h - , (0 - 23);

```

```

hh - , (00 - 23);
n - , (0 - 59);
nn - , (00 - 59);
s - , (0 - 59);
ss - , (00-59).

```

```

: "sample_log", "txt".
: = sample_log_, = txt ( !).
HHDDMMYYYY.

```

4 7 /

sample20030321.log.

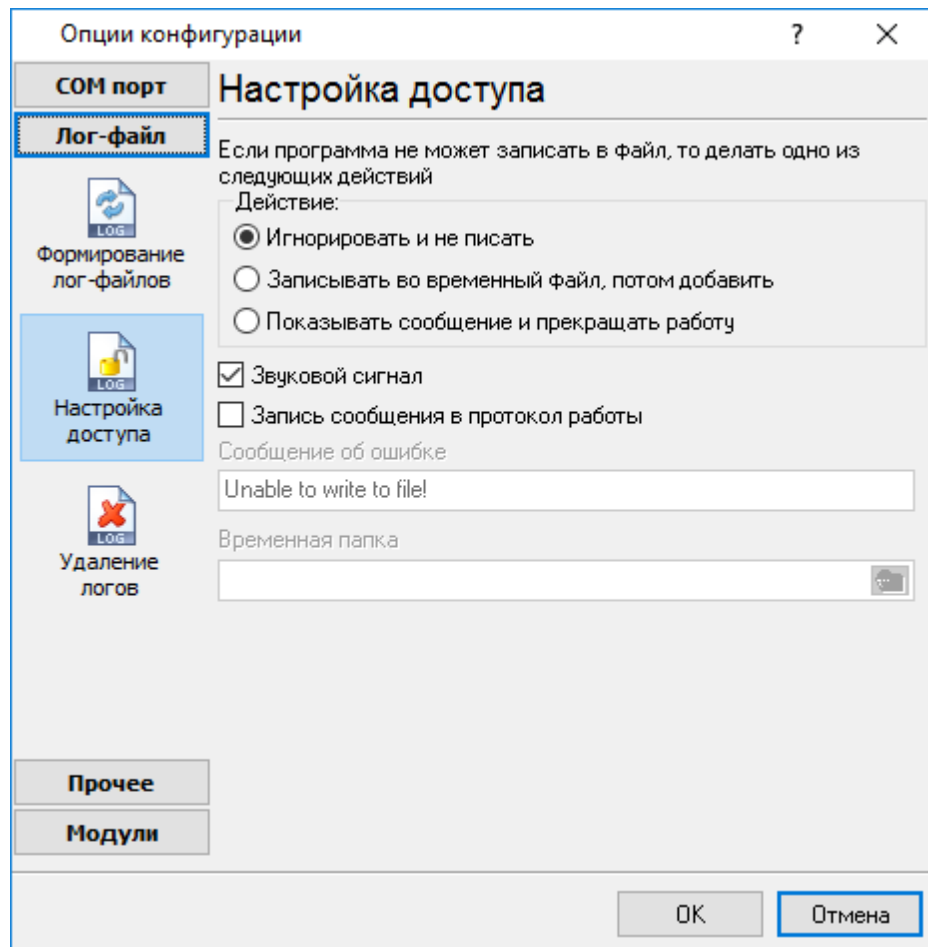
/ , COM1-

4 7.

1. !
2. -
3. () -
4. ().

5.3.2

Microsoft Office (, Microsoft Word),
SNMP Data Logger



. 4.2.1.

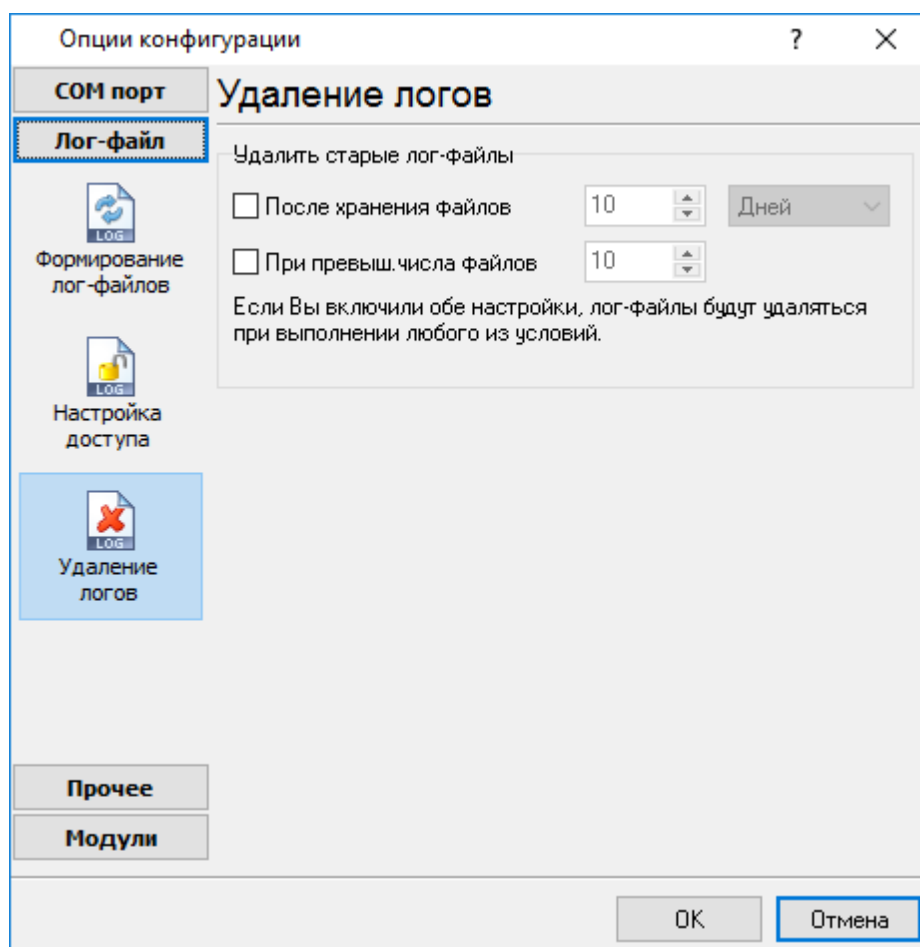
SNMP Data Logger

4.2.1),

-
-
-

5.3.3

(рис. 4.3.1).



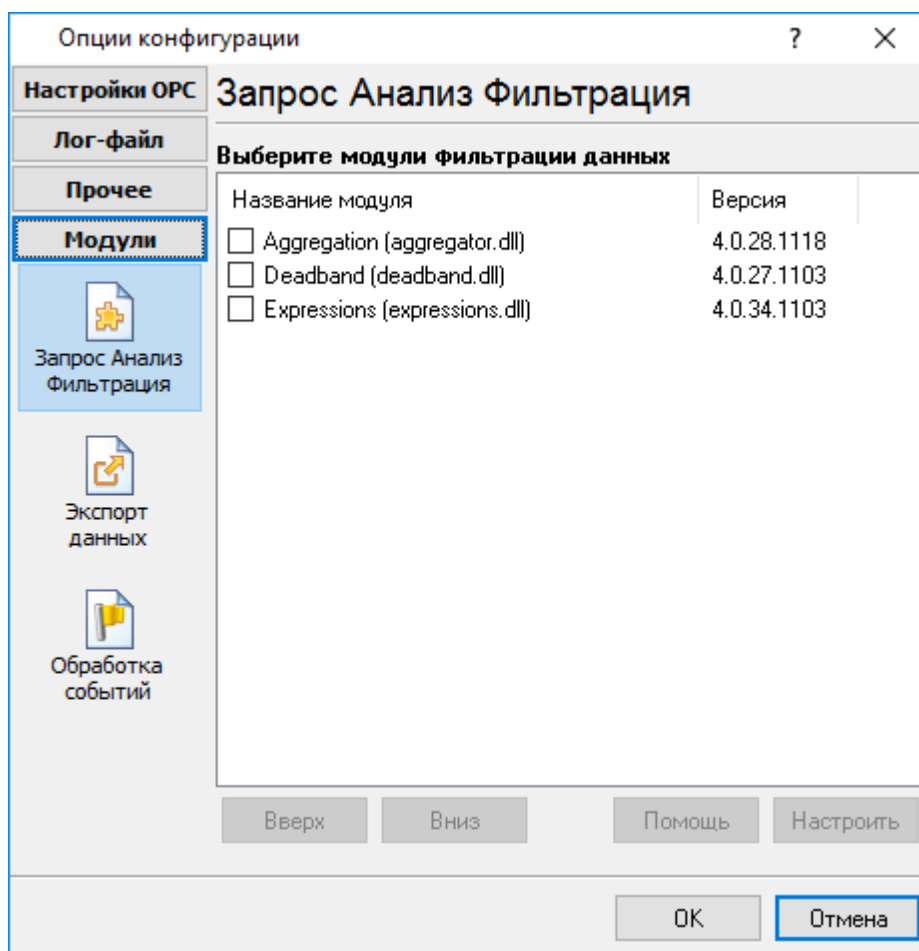
. 4.3.1.

5.4

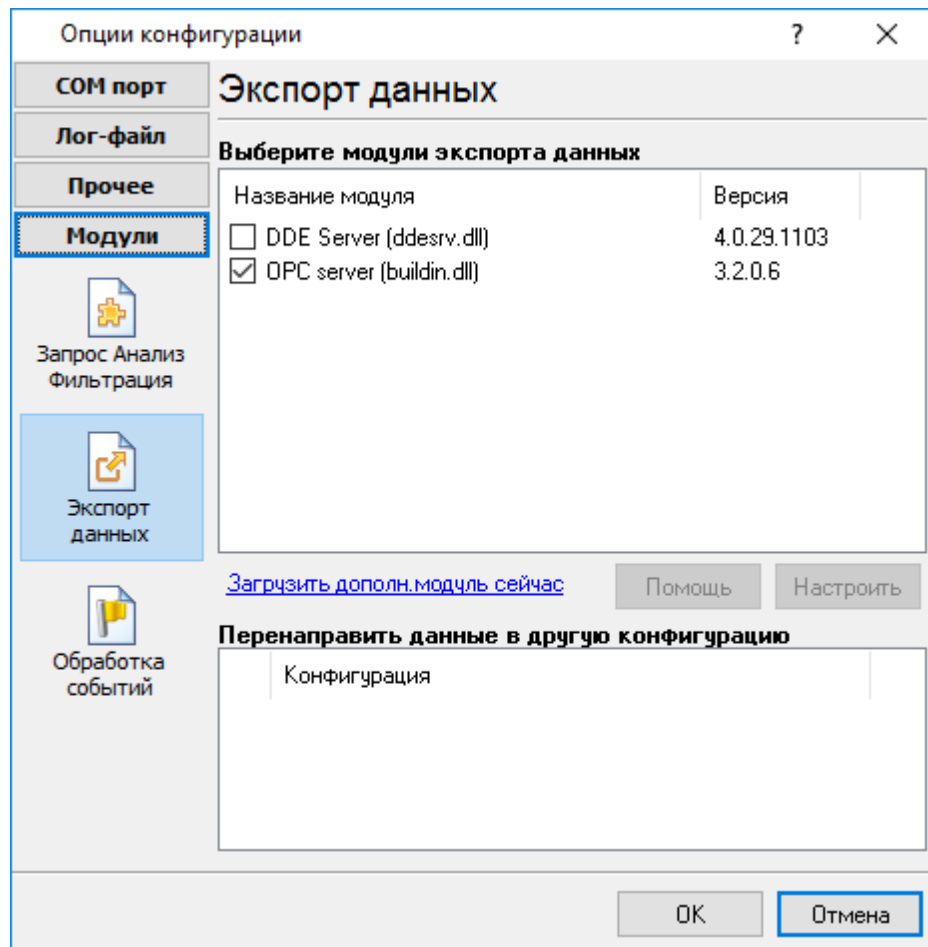
5.4.1

SNMP Data Logger :

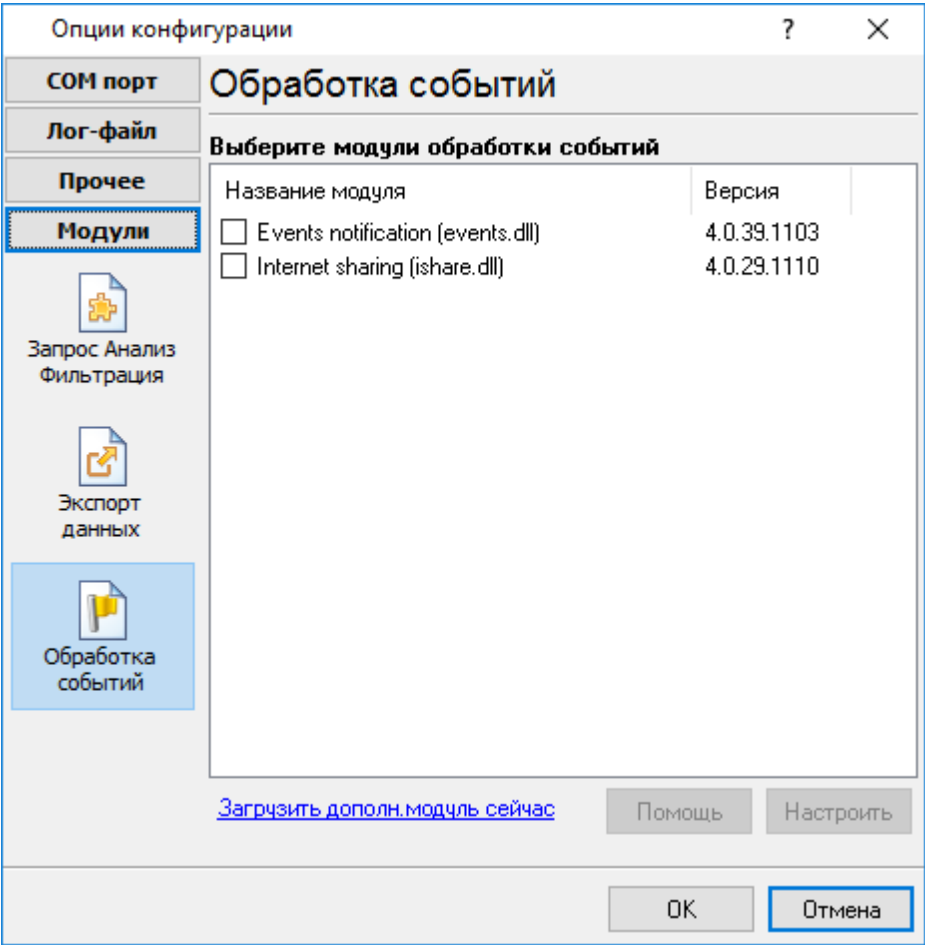
- - ;
- - , Excel ;
- (. 5.1.3) - SNMP Data Logger. , " - " "



. 5.1.1.



. 5.1.2.



. 5.1.3.

"OK".

5.4.2 OPC

SNMP Data Logger

OPC OPC.

SNMP Data Logger

(. 5.2.1).

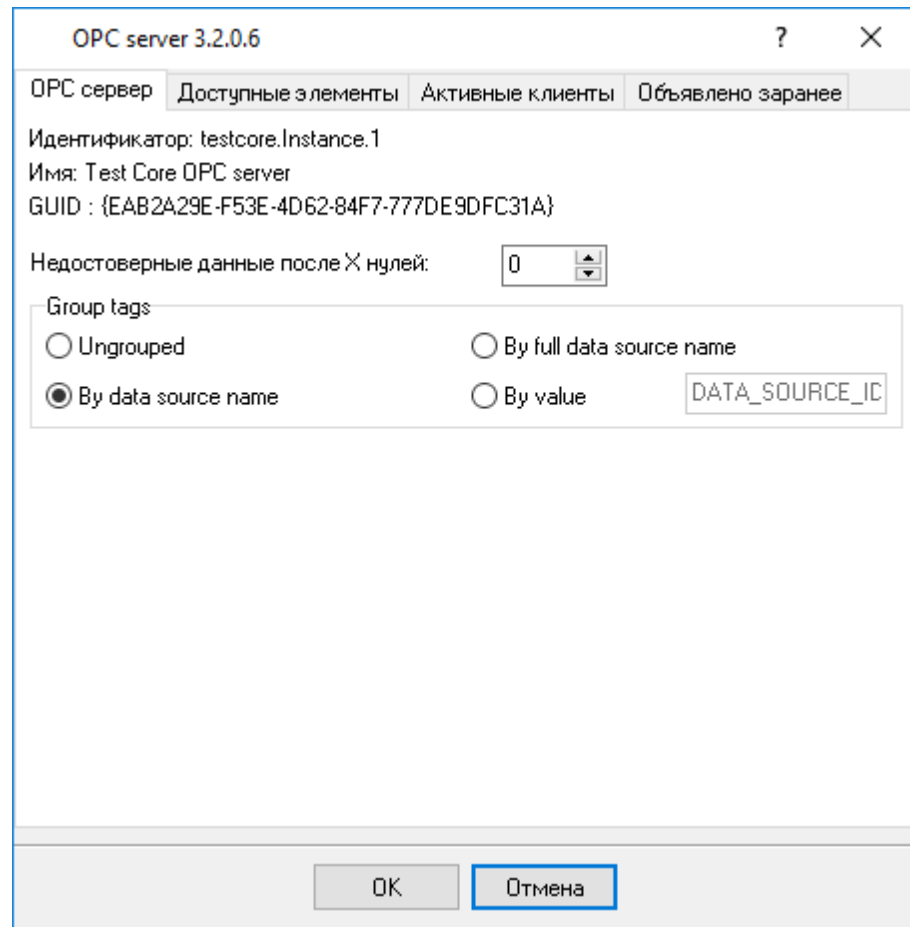
OPC

OPC Core Components Redistributable
)

www.opcfoundation.org (

OPC

OPC



. 5.2.1.

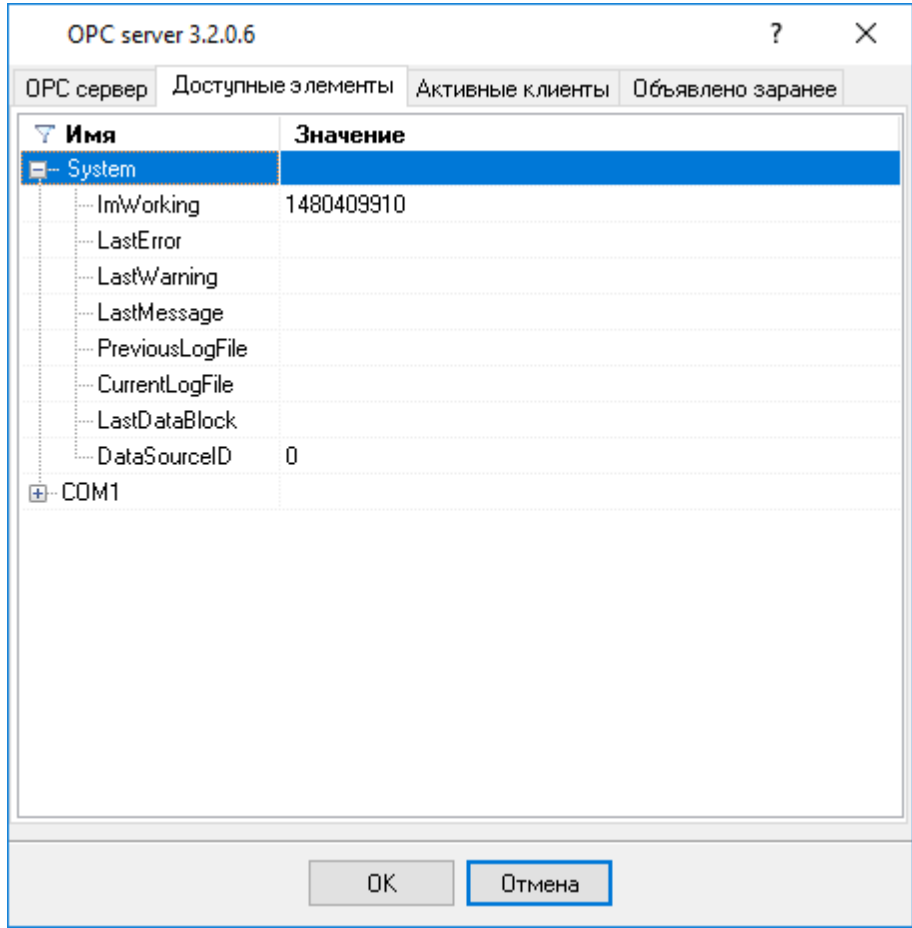
OPC

SNMP Data Logger,

OPC

(.2).

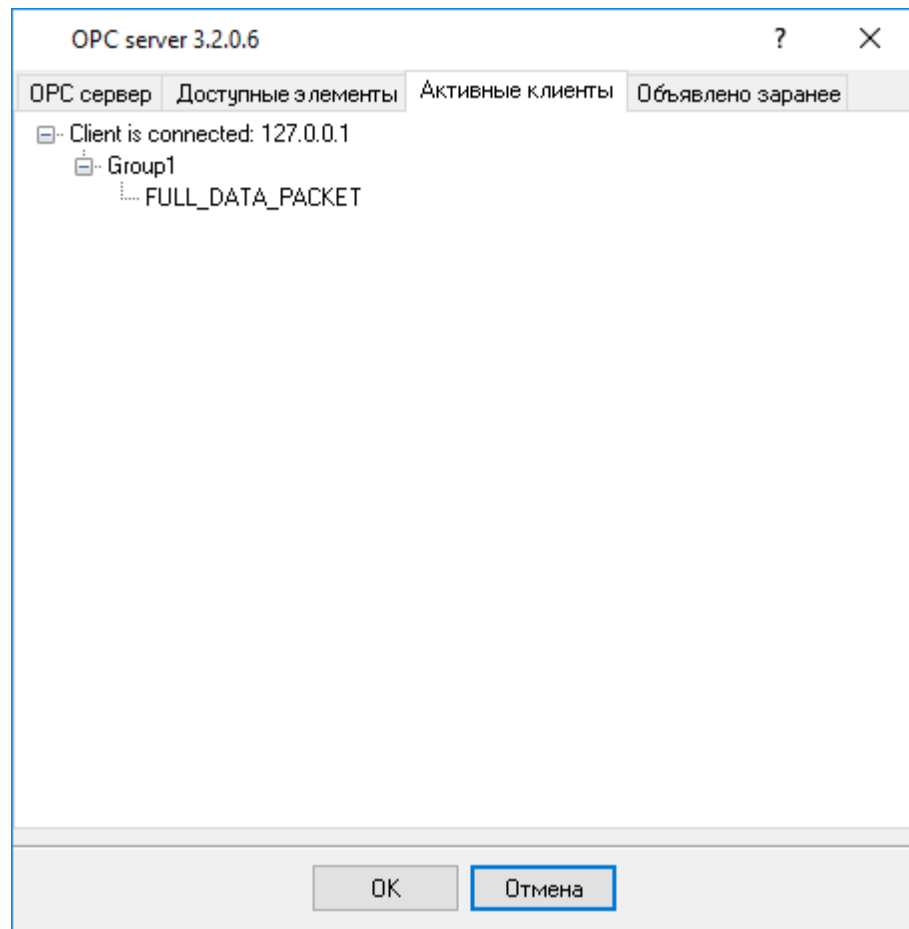
OPC



. 5.2.2.

OPC

" "



. 5.2.3.

SNMP Data Logger

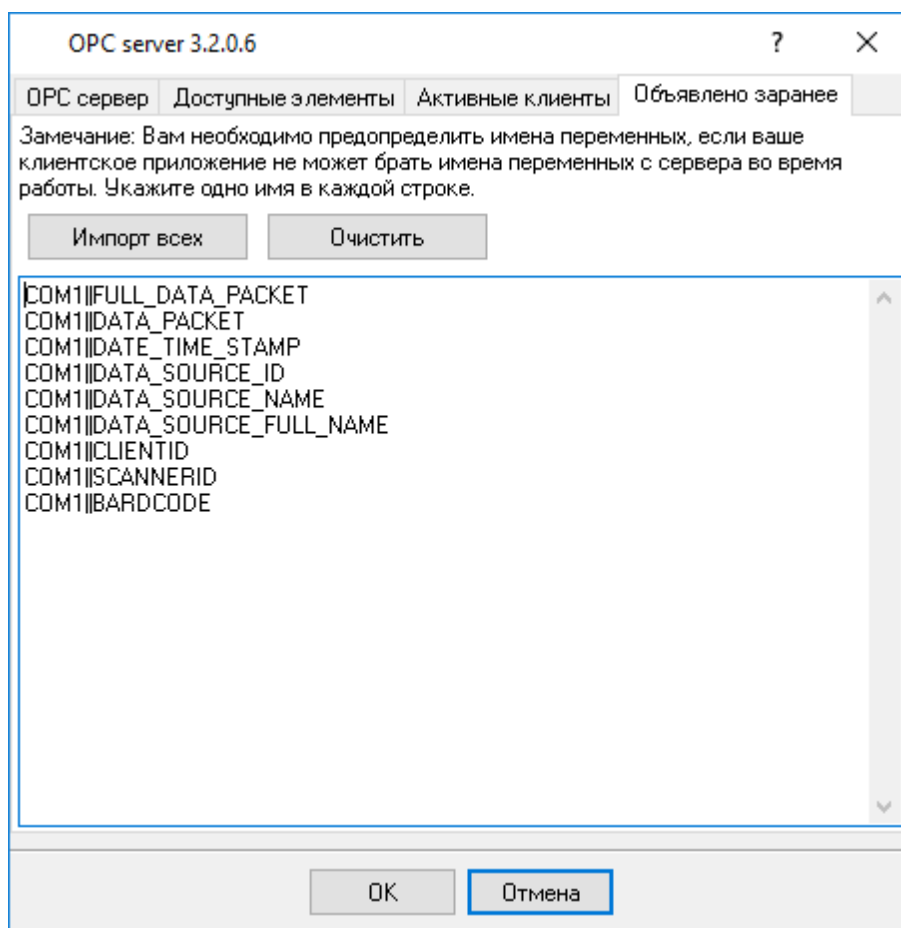
"

". SNMP Data Logger

OPC

OPC
OPC

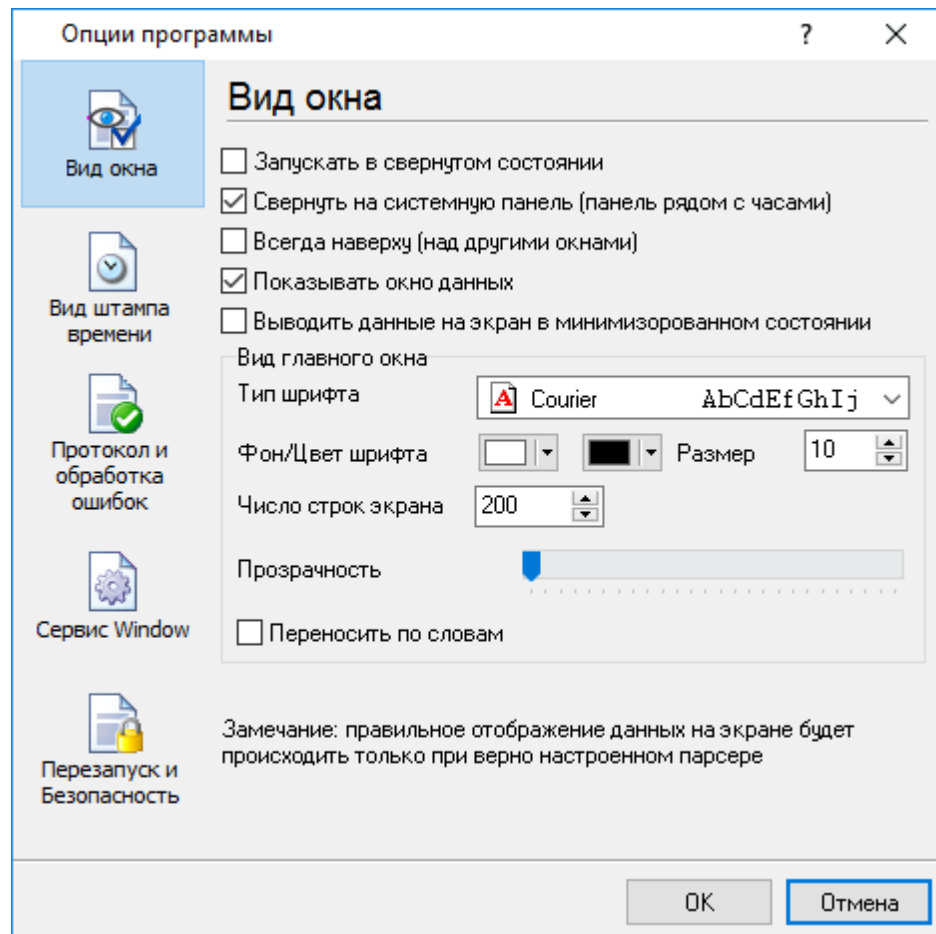
(.4).



. 5.2.4.

5.5

5.5.1

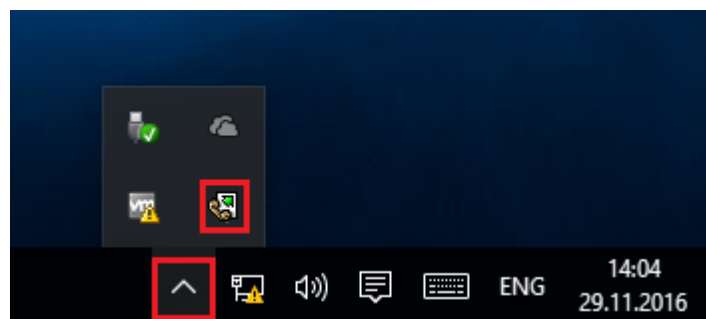


. 6.1.1.

" (. 6.1.1) :

- SNMP Data Logger

(. 6.1.2) ;



. 6.1.2.

-

(. 6.1.2) -

SNMP Data Logger

;

;

-

/

;

);

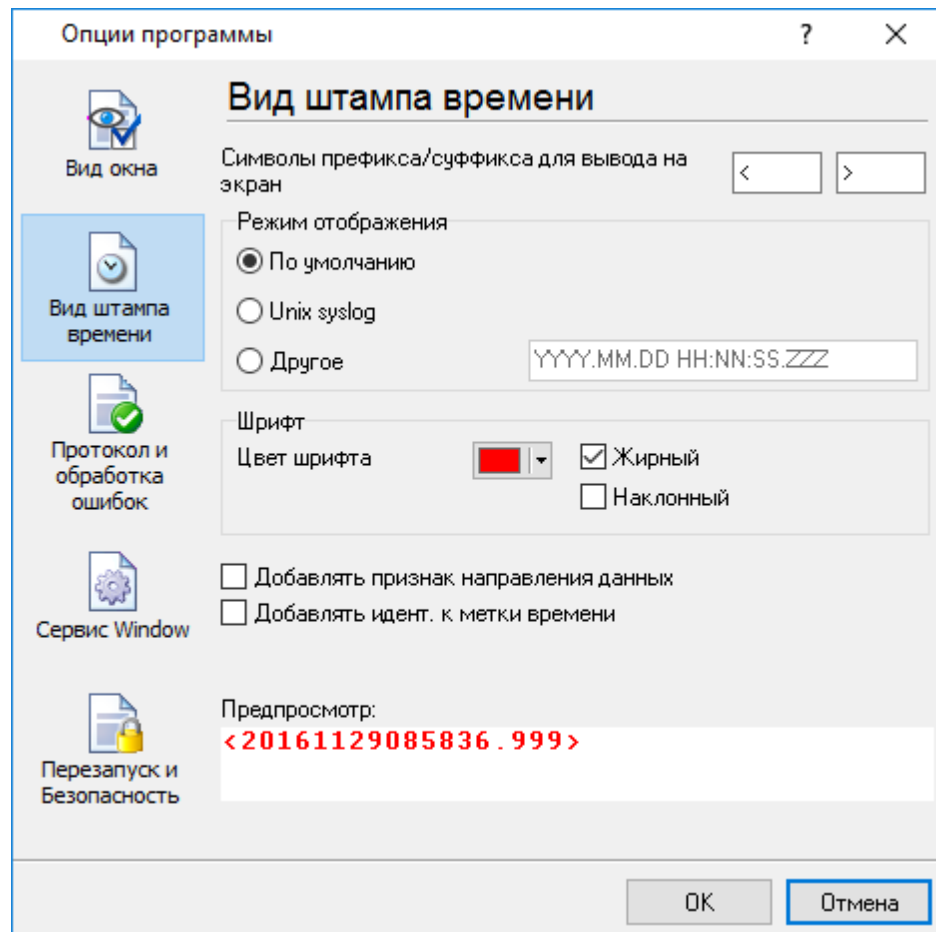
(, ,

- Windows 2000

;

5.5.2

(. 6.2.1)



. 6.2.1.

18

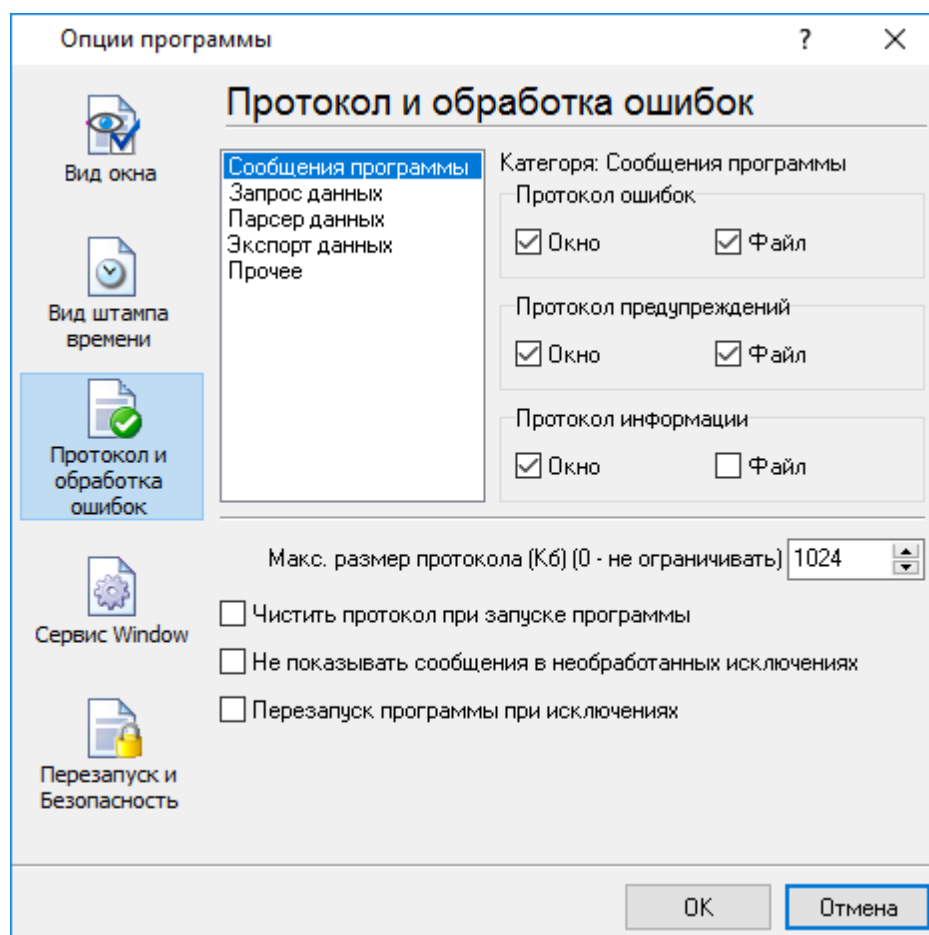
TX

RX

, COM1.

5.5.3

.log.



. 6.3.1.

SNMP Data Logger

3-

- ;
- ;
- ;

- ;
- - ;
- - ;
- - ;

/

" ' " ' "

SNMP Data Logger

" "

5.5.4
5.5.4.1

Windows 2000

() Windows :

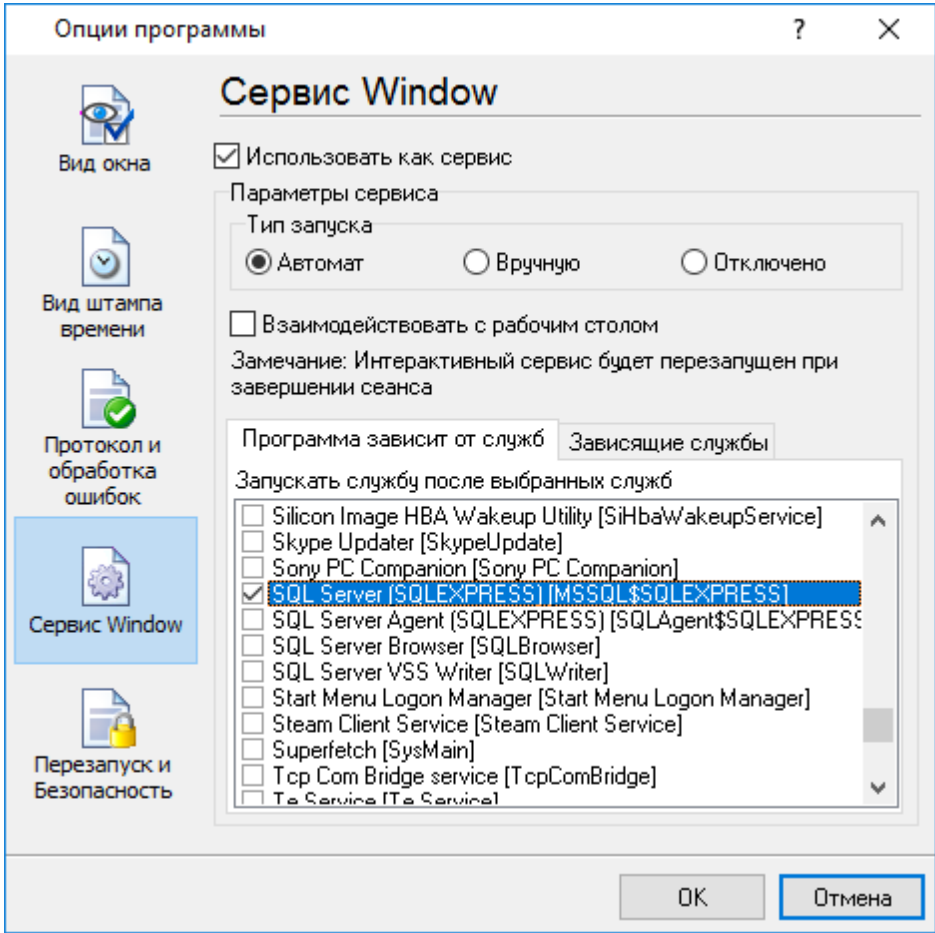
- (' Windows
- 2000);
- - ();
- ;
- ;

).

(*Windows Vista*)

(*elevated*)

" " " **Windows**" (. 6.4.1).



. 6.4.1.

1. - Windows
 2. - ; " " ;
 3. - .
- " .
- (. 6.4.2).
- " , . . Windows

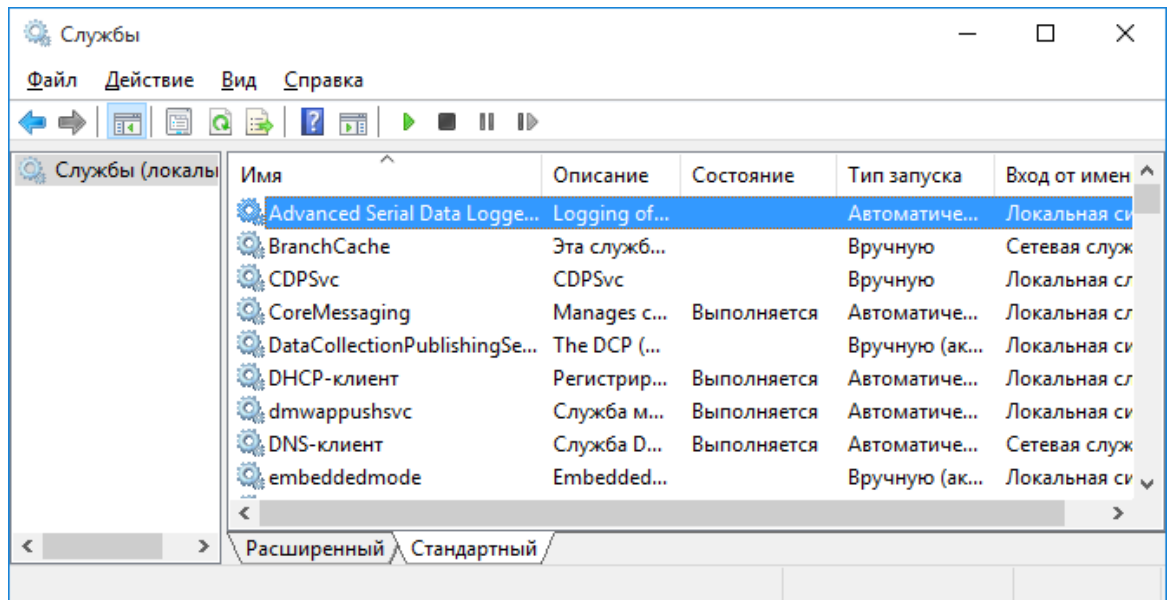
: _____ [42] Windows Vista



. 6.4.2

SNMP Data Logger, " (. 6.4.1)

(. 6.4.3).

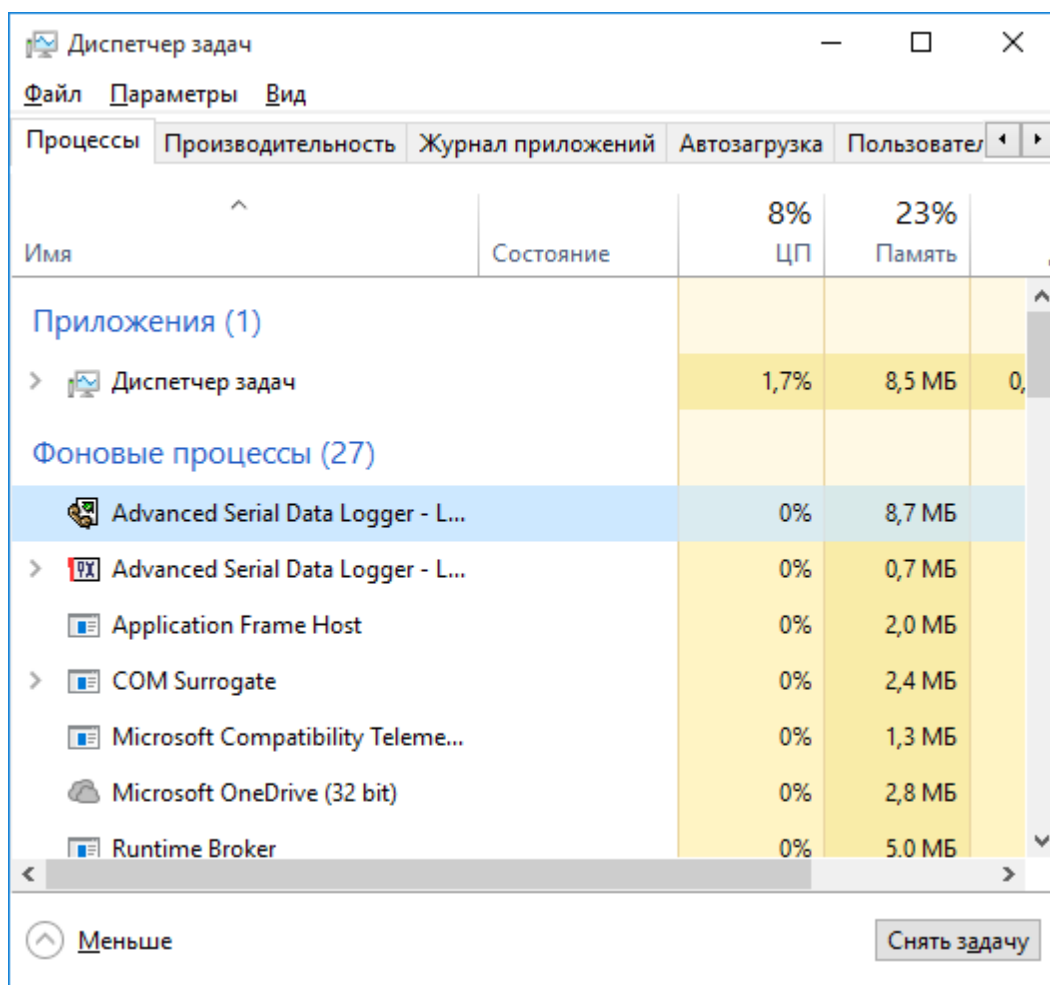


. 6.4.3.

(Windows 2000)

snmplogger.exe (. 6.4.4).

2 - snmploggersrv.exe
 SNMP Data Logger
 SNMP Data Logger,
 svany.exe



. 6.4.4.

snmploggersrv.exe

- /? - ;
- /I - ;
- /A - ;
- /D - ;
- /R -

5.5.4.2

Windows Vista

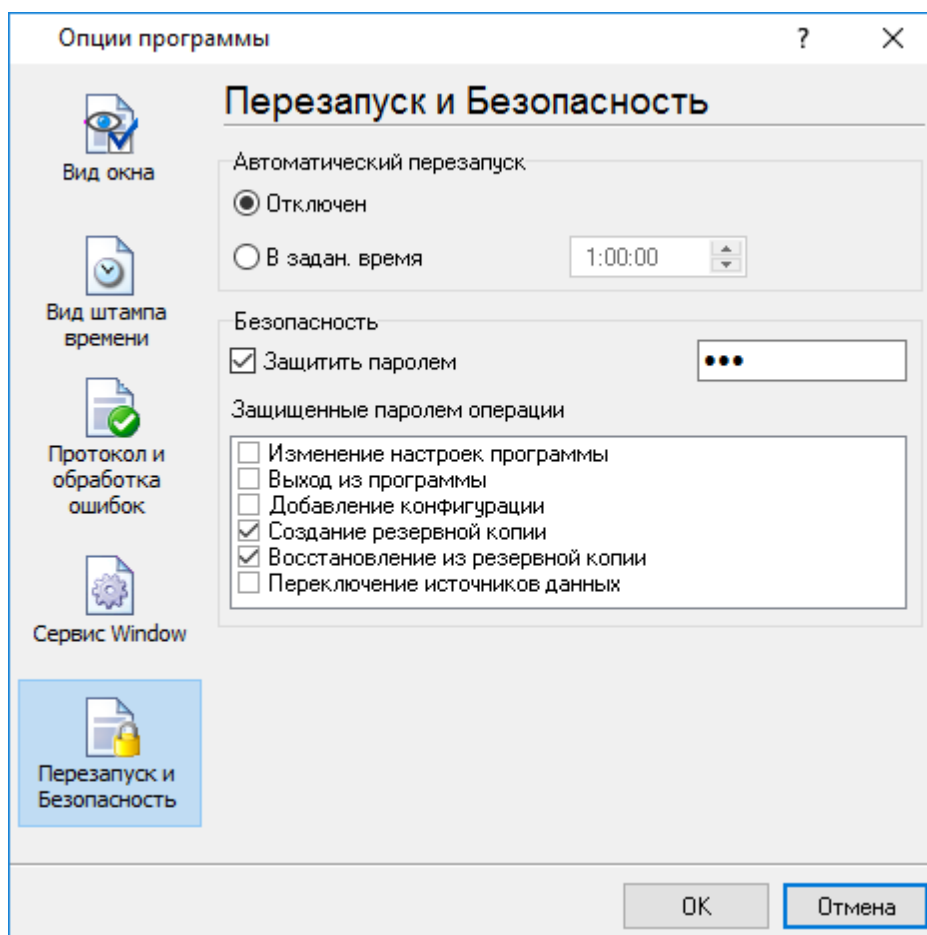
Windows Vista

Windows.

- : Interactive Services Detection
 - : UIODetect
 - : UIODetect.exe
 - :
 - : %windir%\system32\UIODetect.exe
 - :
- * Home Basic:
 - * Home Premium:
 - * Business:
 - * Enterprise:
 - * Ultimate:

5.5.5

(. 6.5.1).



. 6.5.1.

" "

6

?

6.1

, . . .

SoftIce

support@aggsoft.ru