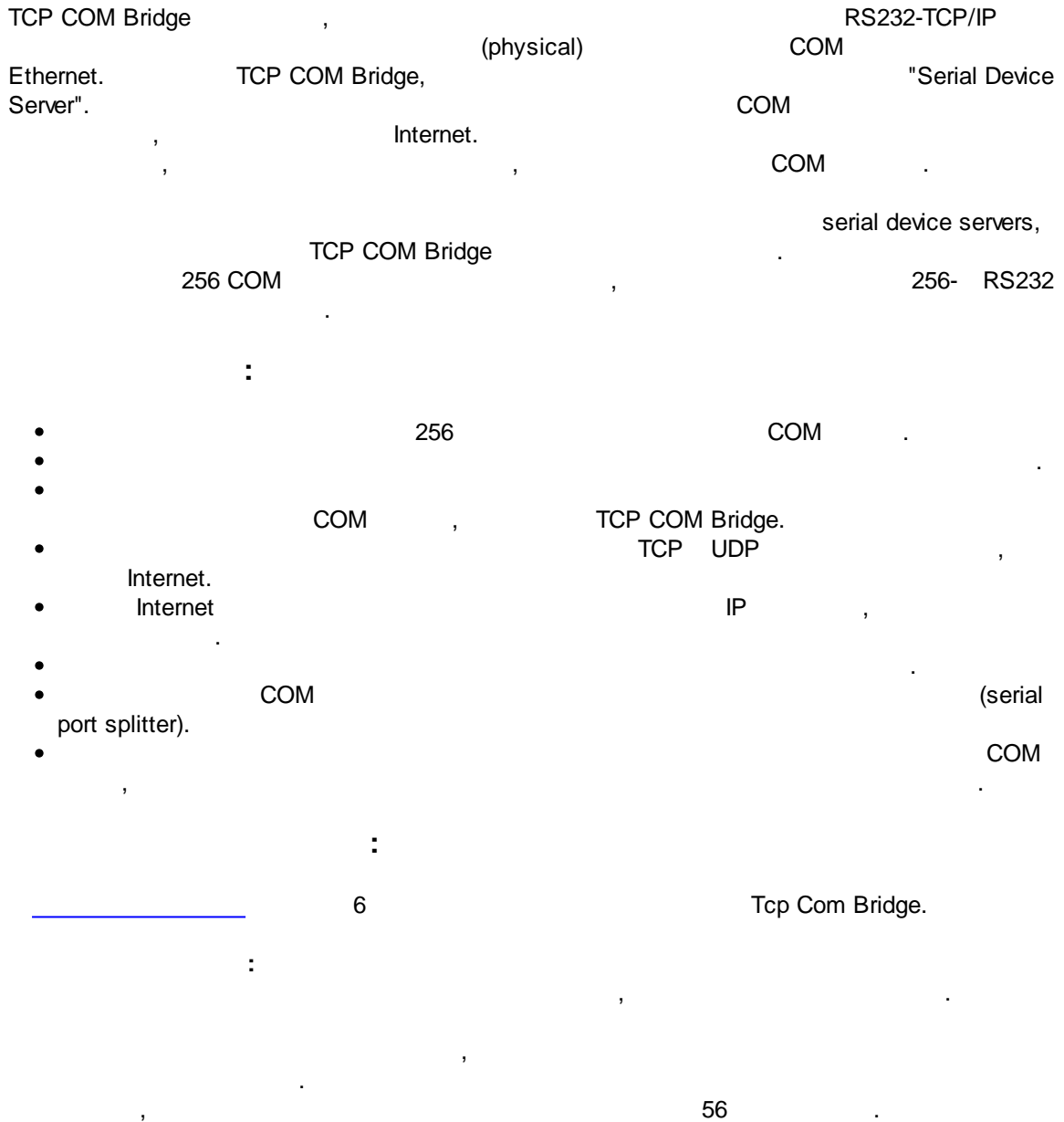




| | | |
|-------------------------|----------------|-----------|
| 1 | | 1 |
| 1 | | 1 |
| 2 | , , | 2 |
| 1 | | 2 |
| 2 | | 3 |
| 3 | | 3 |
| 4 | | 3 |
| 3 | | 4 |
| 1 | | 4 |
| 2 | | 5 |
| 4 TCP COM Bridge | | 7 |
| 1 | | 7 |
| 2 | " " | 9 |
| 3 | | 11 |
| 4 | " " | 17 |
| 5 | | 18 |
| 6 FAQ | | 18 |
| 5 | | 19 |
| 1 | | 19 |
| 2 | TCP/IP | 21 |
| 3 | COM | 21 |
| 4 | | 21 |
| 5 | Internet | 22 |

1

1.1



: <http://www.aggsoft.ru/>

2

2.1

Copyright © 1999-2013 AGG Software.
All Rights Reserved

1. Tcp Com Bridge

2.

3. Tcp Com Bridge

4.

5. Tcp Com Bridge
sales@aggsoft.ru

6. Tcp Com Bridge

Tcp Com Bridge

7. **Tcp Com Bridge** "AS IS".

8.

9. Tcp Com Bridge

10.

Tcp Com Bridge
Tcp Com Bridge.

2.2

shareware-

Internet,

2.3

: 21 , 1
65 .

2.4

| | |
|----------------|--|
| Tcp Com Bridge | support@aggsoft.ru |
| | support@aggsoft.ru |
| | sales@aggsoft.ru |

3

3.1

: CPU, Intel® x86 x64

:

- Windows 2000 Professional SP 4;
- Windows 2000 Server;
- Windows XP x86 x64;
- Windows 2003 Server x86 x64;
- Windows Vista () x86 x64.
- Windows 7 () x86 x64.
- Windows 2008 Server () x86 x64.
- Windows 8 () x86 x64.

Windows 9x, Me NT!

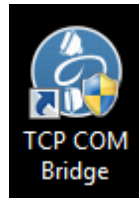
CPU: 1 CPU.

: 256 MB.

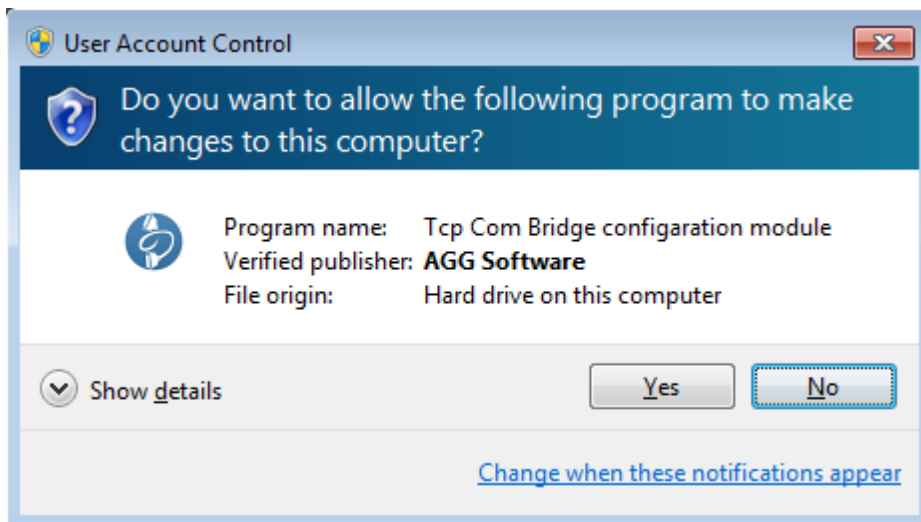
: 5 MB,

Microsoft Windows Vista

- 1.
- 2.
3. Windows Vista (.2).



.1. Windows Vista



.2.

Google.

3.2

Bridge
Windows.

Tcp Com Bridge,

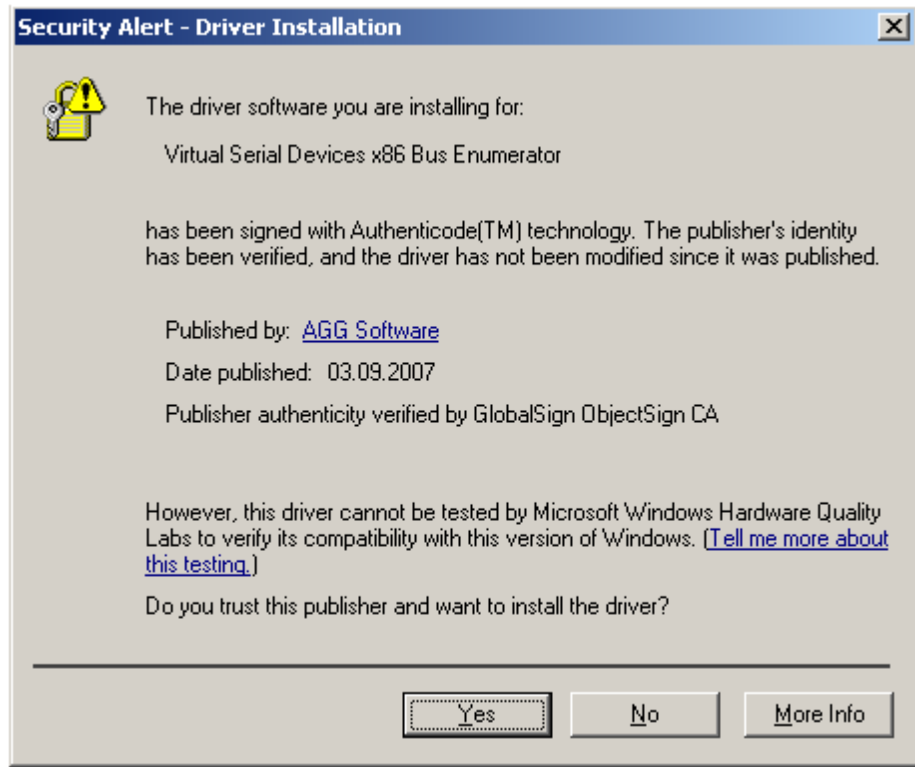
Tcp Com

Tcp Com Bridge,

, Tcp Com Bridge "c:\Programs Files\Tcp Com Bridge"

Microsoft Windows 2003:

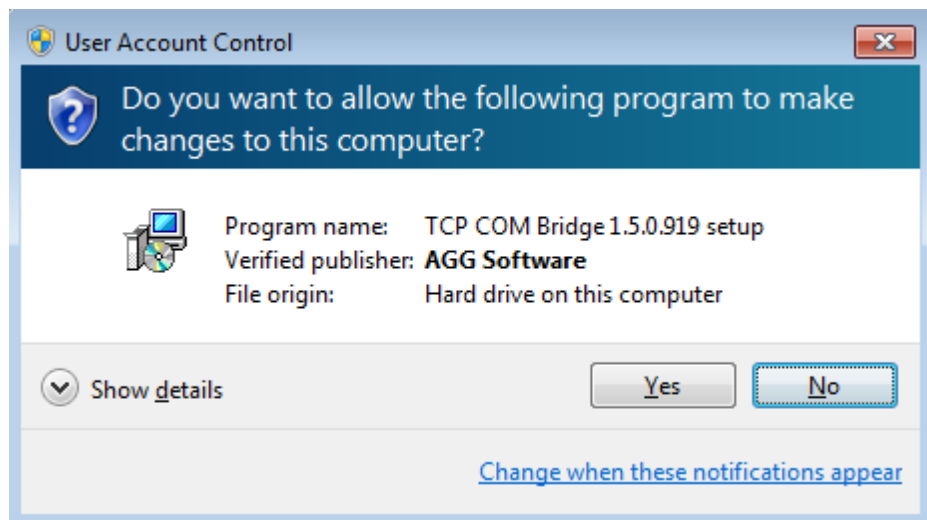
Windows
(.1). " " ("Yes").



.1 Windows 2003

Microsoft Windows Vista

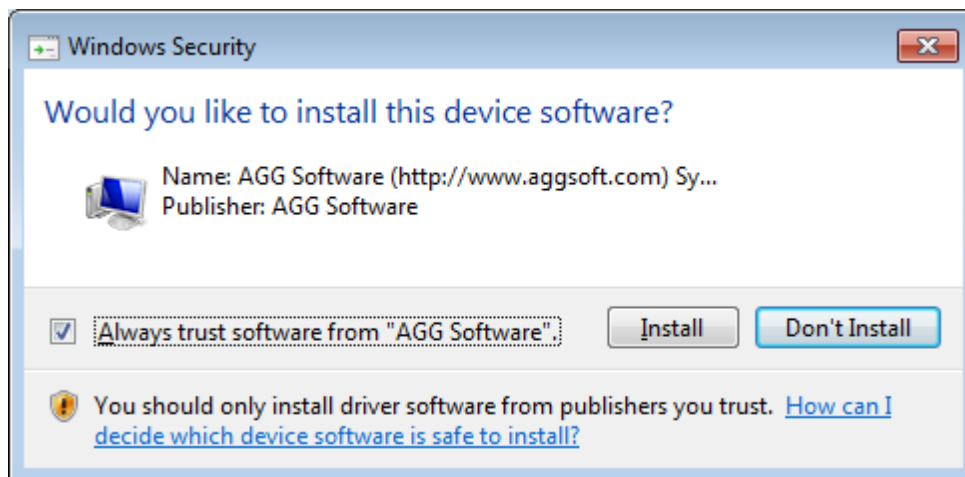
Windows
(.2), " ("Continue").



.2

Windows
(.3), "Always trust software from AGG Software"

"Install".



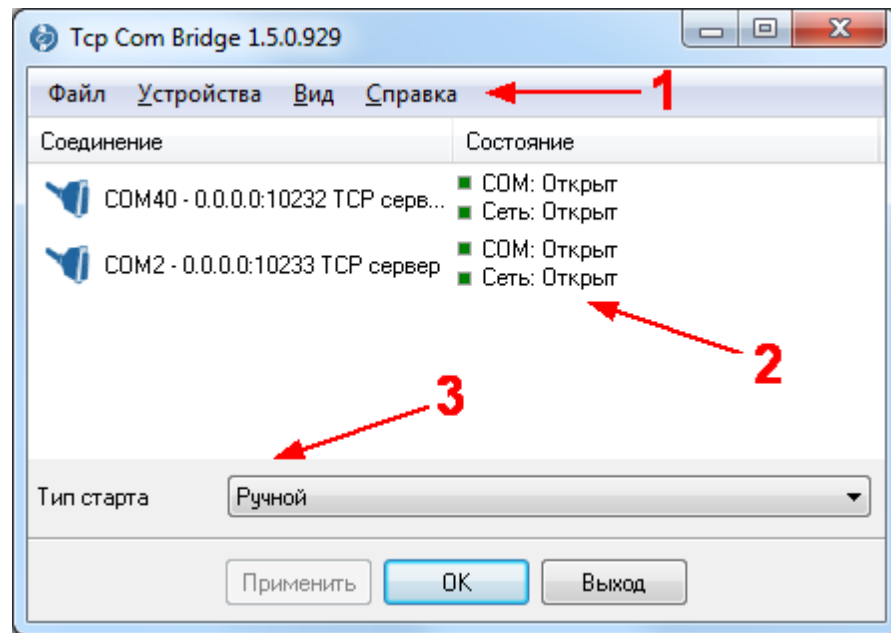
.3

4 TCP COM Bridge

4.1

- COM
- COM ;
- Tcp Com Bridge Management, PNP, ... : WDM, WMI, Power

1. (. 1). -
2. Tcp Com Bridge
3. Windows Tcp Com Bridge



.1

, ("Hotkeys",

).

OK

COM , Tcp Com Bridge

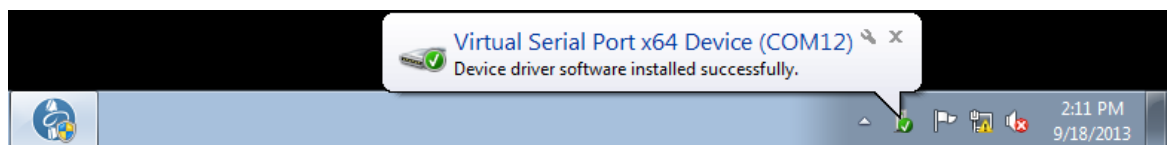
COM

Tcp Com Bridge

.2.

COM

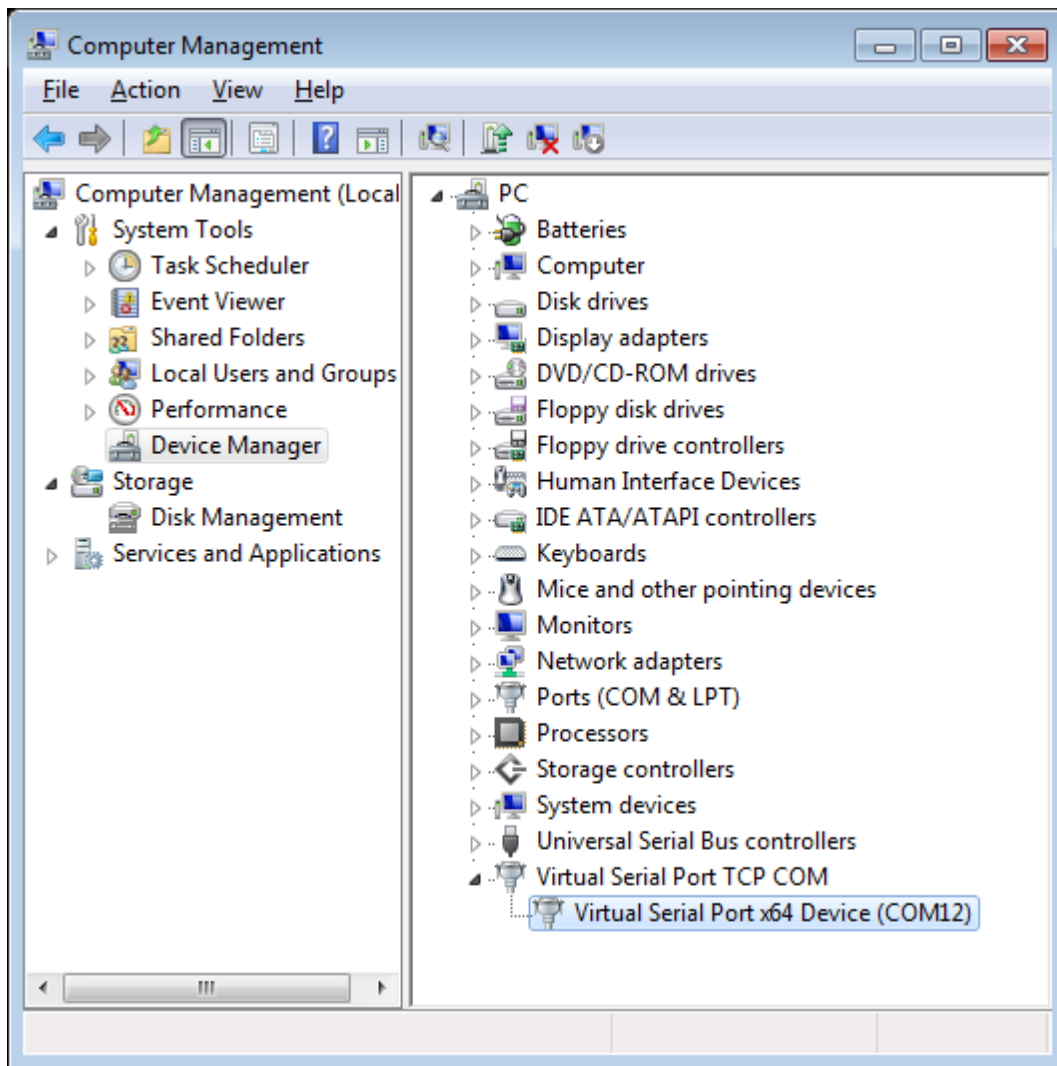
Tcp Com Bridge



.2. Tcp Com Bridge

COM

(. .3).



.3. COM

4.2

Hotkey: *Ctrl+N*

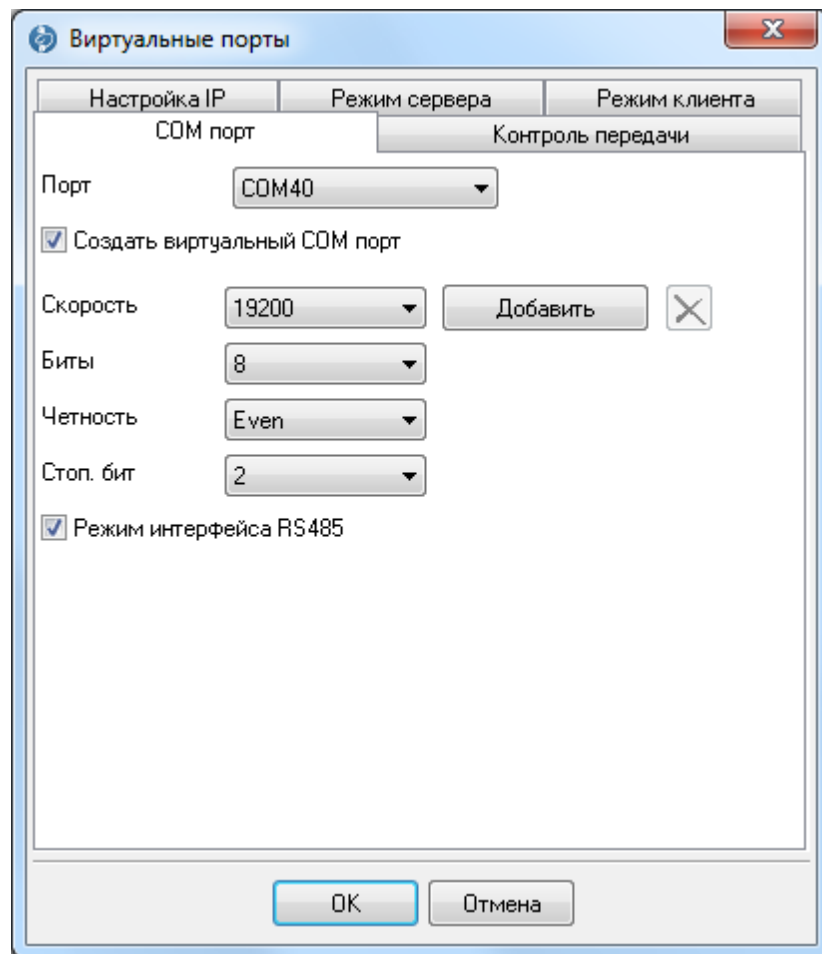
Hotkey: *Ctrl+C*

Hotkey: Ctrl+X

-
COM). (, .
-
-
COM . COM " "

4.3

(. 1).



.1. COM

COM

- COM . COM ",

: COM ,
COM .

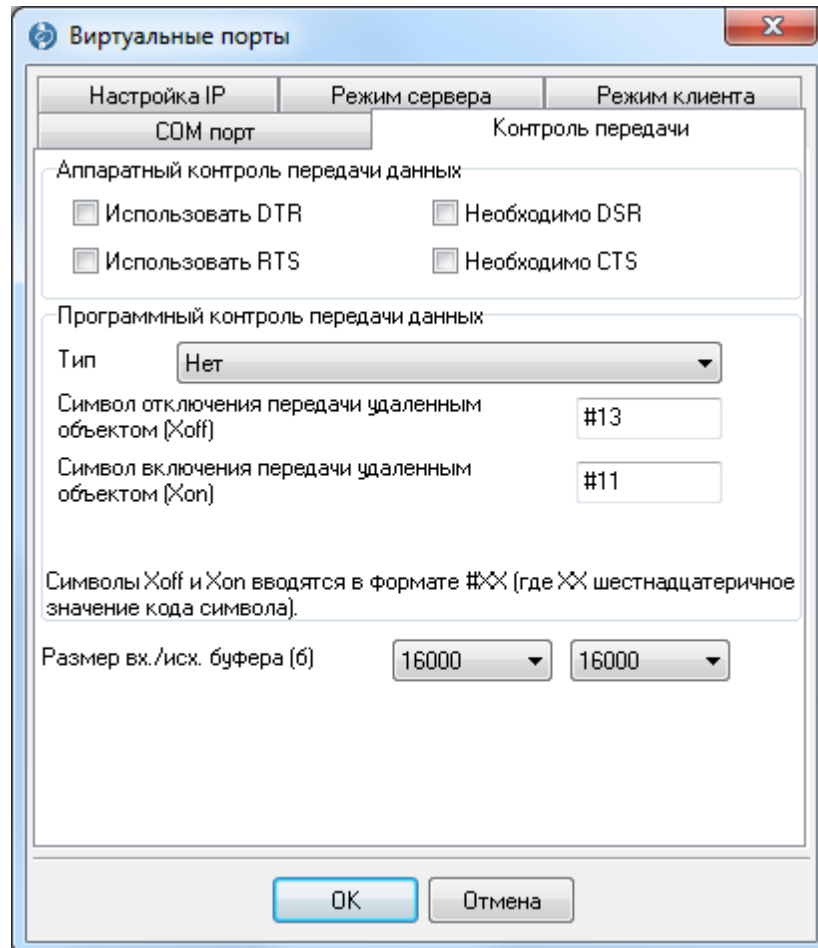
" "

"OK".

RS 485 -

RTS.

RS232-RS485.

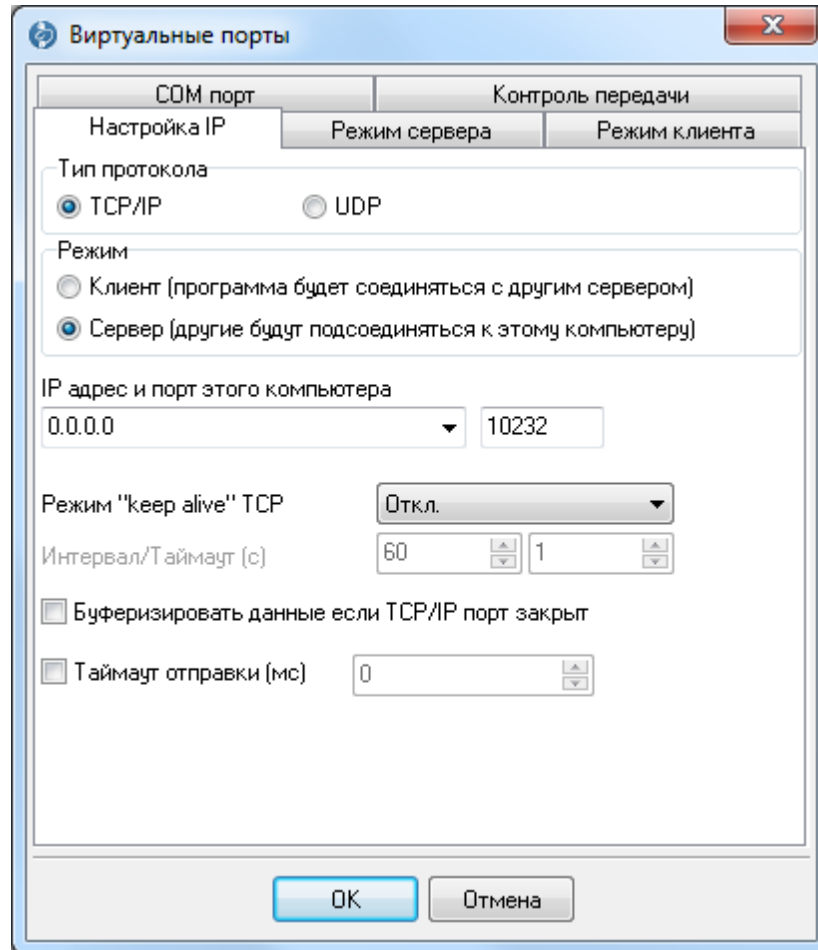
(COM flow control)

.2.

DTR"

RTS" / "

COM

IP (IP settings)

.3. IP

TCP -

IP.

. TCP

TCP

UDP -
TCP, UDP

IP

TCP, UDP


```

-
"
"
.

Tcp Com Bridge
:

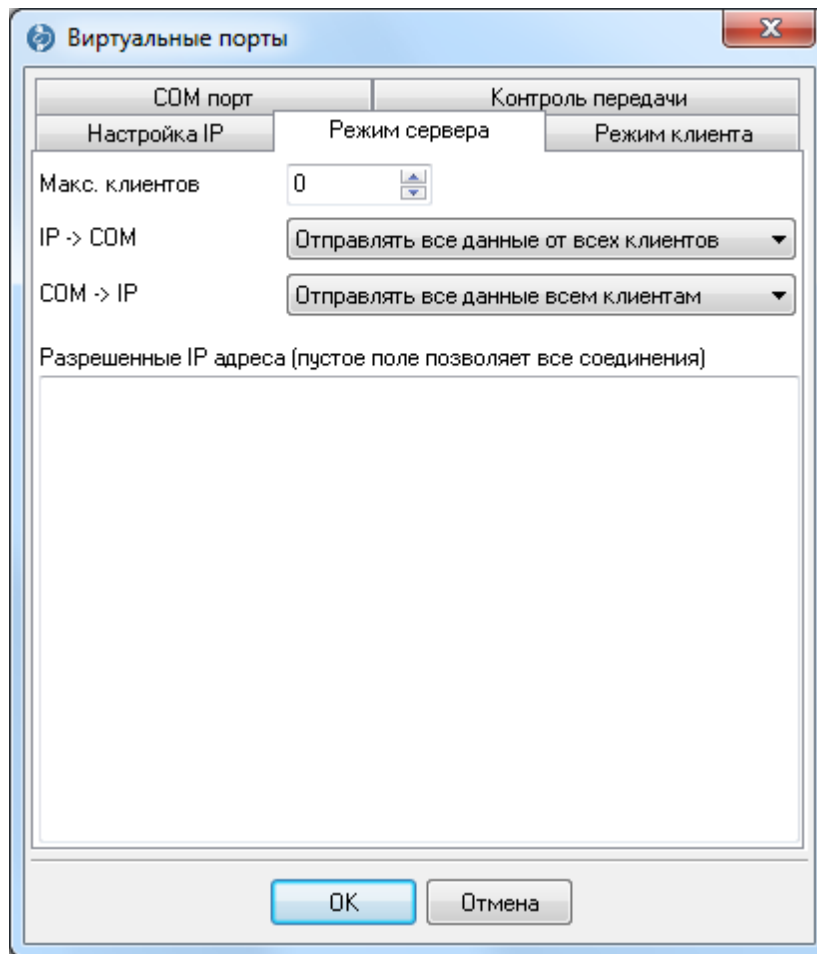
1.
.
TCP/IP,
Tcp Com Bridge
www.yourserver.com)
"Plant1"
IP
Tcp Com Bridge
IP
IP
IP
;

2.
.
IP
,
,
IP
Tcp Com Bridge
(NIC),
IP
Tcp Com Bridge
IP
Microsoft Windows,
IP
IP
IP
IP
0.0.0.0,
(listen) IP
IP
-
IP
(
).
(
)
"
"
COM
IP
TCP/IP
:
keep-alive TCP (
) -
,
,
,
"
"
keep-alive,
Windows.

TCP
COM
"COM
".

```

(.4) ,



.4.

IP

IP

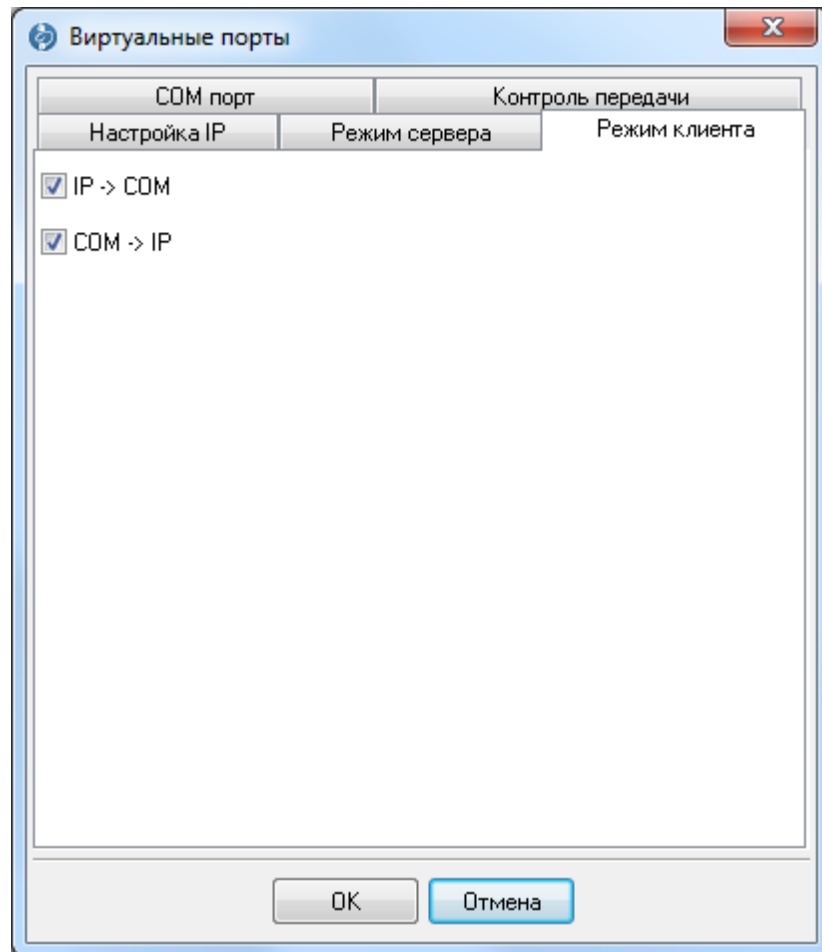
Tcp Com Bridge

IP

IP -> COM COM -> IP

IP COM

(.5)



.5.

4.4

" "

Tcp Com Bridge -

COM

4.5

```

-p SerialNo          COM          SerialNo. SerialNo
.
-u SerialNo  0      COM          SerialNo.          ,          0,
.
-e SerialNo  0      COM          SerialNo.          ,          0,
.
-i <INF_File> <Hardware_ID>
  INF_File          Hardware_ID.
-ia
.
-r <Hardware_ID>
  Hardware_ID.
-ra
.
-s0
.
-s1
  Windows.
-s2
  (          ).
:
:
tcpcom -s0 -ia

```

4.6 FAQ

```

Q:          (          )
A:          _____
.
Q:
A:          "CreateFile"          "COM%d",

```

COM-COM9.

"\\.\COM%d"

COM

Q: COM ?

A: SetupAPI
{487ECAF4-213D-4d17-AA07-2F91078B619D}.

GUID

5

5.1

Tcp Com Bridge

1. serial device server

Serial Device Server ("terminal server")

(Ethernet

TCP/IP.

Tcp Com Bridge

Windows

Tcp Com Bridge

COM

COM COM

(256).

TCP/IP

Tcp Com Bridge

16 ()

2000 USD. (500

USD PCI PCI-E - 16 500 USD . .) 1000

USD.

- a. RS232-USB,
- b.

()

Tcp Com Bridge

Tcp Com Bridge

TCP/IP

Tcp Com Bridge

2. TCP/IP

COM

COM

Tcp Com Bridge,

TCP/IP,

COM

3. COM

COM

Tcp Com Bridge

Tcp Com Bridge

TCP/IP (Hyperterminal)

COM

COM

4. Internet

Tcp Com Bridge TCP/IP

Tcp Com Bridge TCP/IP

COM

COM #1,

Tcp Com Bridge,

COM #2.

5. COM COM

Windows

Com Bridge.

Tcp Com Bridge,

TCP/IP

COM

COM COM1

COM10 COM11).

COM10

COM10.

6. TCP/IP

Tcp Com Bridge.

COM

#1

TCP/IP

#2

TCP/IP

#1 (COM #2

TCP/IP

COM

COM

5.2 TCP/IP

Tcp Com Bridge
IP: 1 65535. TCP/IP 1 1000 TCP/
1000. . TCP/IP
TCP/IP

5.3 COM

Tcp Com Bridge COM
COM
COM 10

5.4

Tcp Com Bridge Windows 2000.
COM Windows,
1. Tcp Com Bridge
2. " Windows"
3.
4. " "
5. : "
6. - Tcp Com Bridge".
tcpcom.exe

- :
1. Tcp Com Bridge, "
 2. ", ,
 3. .
 4. " - " Tcp Com Bridge.
- :
1. " - "
 2. Tcp Com Bridge.
 3. Tcp Com Bridge.
 4. " "

5.5

Internet

Tcp Com Bridge

/

10.0.0.0 - 10.255.255.255
 172.16.0.0 - 172.31.255.255
 192.168.0.0 - 192.168.255.255

: http://en.wikipedia.org/wiki/Private_network

IP
 Google:

<http://www.google.com/search?q=my+ip+address>

IP Tcp Com Bridge

Tcp Com Bridge
 (Port Forwarding)

IP IP

: 192.168.1.12. IP IP 66.249.75.147.
IP 192.168.1.12, IP

: Tcp Com Bridge IP , ,
?

1. <http://192.168.1.1/>
2. "Port Forwarding" "Virtual Server".
- 3.

:
Local port: 10232
Local IP address: 192.168.1.12
Remote port: 10232

4. "port forwarding"
: <http://www.portforward.com/>.

IP
IP Tcp Com Bridge IP
IP IP

dynamic DNS,
IP :
<http://www.noip.com/>
<http://www.dnsdynamic.org/>
<http://www.changeip.com/>
IP
dynamic DNS.

Firewall

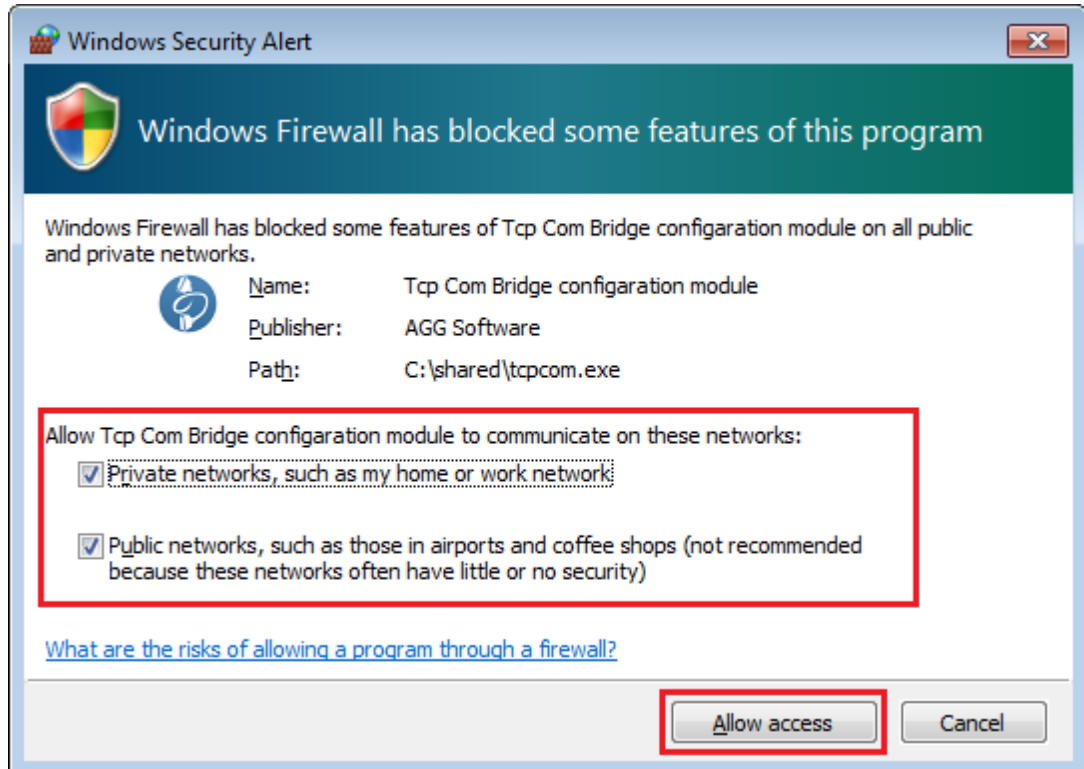
().

Bridge TCP
Tcp Com Bridge.

Windows

Tcp Com

. 1.



.1.

Tcp Com Bridge