

## Advanced TCP/IP Data Logger

<b>1</b>		<b>1</b>
1	Advanced TCP/IP Data Logger .....	1
2	.....	2
<b>2</b>		<b>4</b>
1	.....	4
2	.....	5
3	.....	5
4	.....	6
<b>3</b>		<b>6</b>
1	.....	6
2	.....	6
<b>4</b>		<b>7</b>
1	.....	7
2	.....	8
3	.....	10
4	.....	11
5	.....	11
<b>5</b>		<b>12</b>
1	.....	12
	TCP/IP .....	12
2	.....	18
	.....	18
	.....	20
	.....	22
3	- .....	23
	- .....	23
	- .....	26
	.....	28
4	.....	29
	.....	29
	OPC .....	33
5	.....	37
	.....	37
	.....	39
	.....	40

		II
	<b>Windows 2000</b>	41
		41
	Windows Vista	44
		45
<b>6</b>	<b>?</b>	<b>46</b>
1		46

1

# 1.1 Advanced TCP/IP Data Logger

Advanced TCP/IP Data Logger  
Excel, Access,  
Logger

TCP/IP  
Windows. Advanced TCP/IP Data

Ethernet.

TCP UDP

Advanced TCP/IP Data Logger

SCADA  
(Dynamic Data Exchange) OPC

DDE  
ODBC,

### Advanced TCP/IP Data Logger:

- 
- 
- ( ASCII)
- 
- 
- 
- 
- 
- 
- Access, MS Excel, dBASE (.). ODBC- (MS SQL, Oracle, MS Excel, MS Access) "
- Advanced TCP/IP Data Logger DDE OPC ;
- Advanced TCP/IP Data Logger ( OLE) Microsoft Excel ;
- 
- 
- 
- 
- 
- Windows 9x/Me/NT/2000/XP/Vista, x86 x64.

Advanced TCP/IP Data Logger

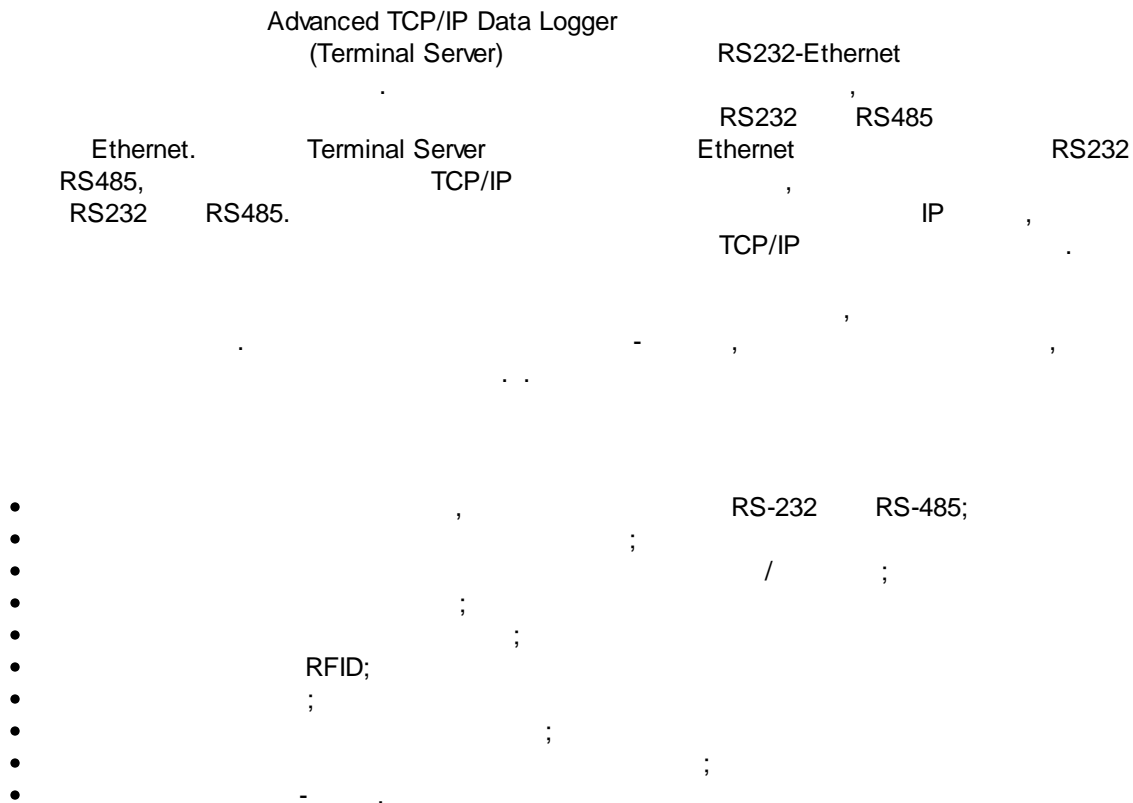
ASCII MODBUS.

Advanced TCP/IP Data Logger,

Advanced TCP/IP Data Logger

Windows NT/2000/XP,

Advanced TCP/IP Data Logger



<http://www.aggsoft.ru/>  
<http://www.aggsoft.ru/tcpip-data-logger.htm>

## 1.2

ASCII - ASCII -  
 Windows  
 ASCII. ASCII \*.TXT (  
 README.TXT).

**Binary File** - , ASCII ( 0 255).

**Bytes** ( ) - , .

**Bit** ( ) - : 0 1. 8  
8 ( ) .

**Cable** ( ) - , .

**Client/Server** ( / ) - , ( , , . . )  
( ) .

**DNS (Domain Name System)** - DNS  
( TCP/IP ) IP . DNS www.aggsoft.com  
198.63.211.24.

**Internet** ( ) - , TCP/IP .

**IP, Internet Protocol** ( ) - Internet Protocol,  
TCP/IP, IP IP , 'xx.xx'.  
xx.xx'.

**IP ( Internet Protocol)** - , TCP/IP.  
IP , , . IP  
: 198.63.211.24.

**LAN (Local Area Network)** - .

**NIC, Network Interface Card** ( ) - , ,  
(PCI, turbochannel, nuBus, .) ( , 10baseFL).

**PC** ( ) - Personal Computer ( ) .

**Ports** ( ) - .

**Protocol** ( ) - .

**TCP/IP, Transport Control Protocol / Internet Protocol** - TCP IP ,  
TCP/IP , .

Internet.

(Log file) - , , ( . log) —

## 2

### 2.1

Copyright © 1999-2016 AGG Software.  
All Rights Reserved

1. Advanced TCP/IP Data Logger -
- 2.
3. Advanced TCP/IP Data Logger ,
- 4.
5. Advanced TCP/IP Data Logger sales@aggsoft.ru
6. Advanced TCP/IP Data Logger , ,  
Advanced TCP/IP Data Logger
7. **Advanced TCP/IP Data Logger "AS IS".**
- 8.

9. Advanced TCP/IP Data Logger

10. Advanced TCP/IP Data Logger  
Advanced TCP/IP Data Logger.

## 2.2

shareware-

 5

21

- 
- 

## 2.3

shareware-

 4

Internet,



## 2.4

Advanced TCP/IP Data Logger	<a href="mailto:support@aggsoft.ru">support@aggsoft.ru</a>
	<a href="mailto:support@aggsoft.ru">support@aggsoft.ru</a>
	<a href="mailto:sales@aggsoft.ru">sales@aggsoft.ru</a>

## 3

### 3.1

- Windows 2000 Professional SP 4;
- Windows 2000 Server;
- Windows XP x86 x64;
- Windows 2003 Server x86 x64;
- Windows Vista ( ) x86 x64.
- Windows 7 ( ) x86 x64.
- Windows 2008 Server ( ) x86 x64.
- Windows 8 ( ) x86 x64.

### 3.2

Advanced TCP/IP Data Logger.

, Advanced TCP/IP Data Logger  
Files\Advanced TCP/IP Data Logger"

"\Programs

Advanced TCP/IP Data Logger

## 4

## 4.1

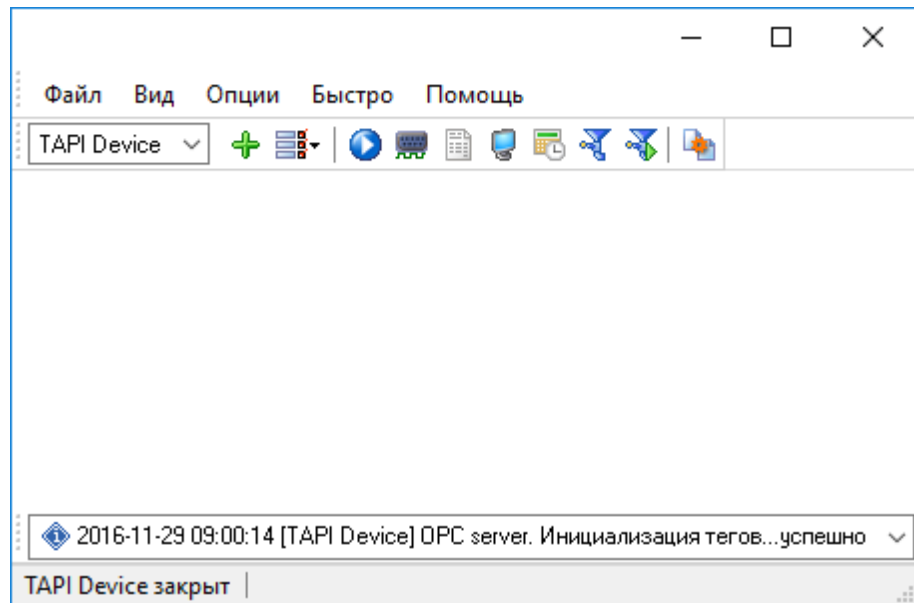
## Advanced TCP/IP Data Logger

Advanced TCP/IP Data Logger

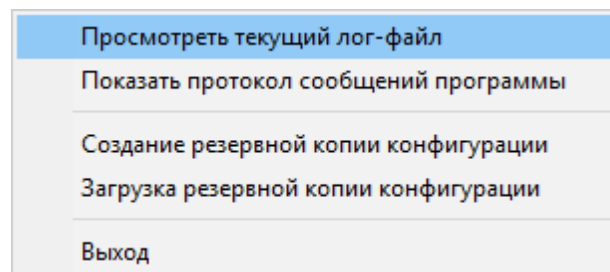
" "

(. 1.1.1),

1.1.2)



. 1.1.1.



. 1.1.2.

" "

C:\. , 8

**1-2-3-4**

- 1. " " " IP"  
12
- 2. ( )  
" " ( )  
)
- 3. " " 29
- 4. Advanced TCP/IP Data Logger  
  
Advanced TCP/IP Data Logger

**4.2**

- (NIC)  
Advanced TCP/IP Data Logger IP (NIC),  
Advanced TCP/IP Data Logger IP
- Advanced TCP/IP Data Logger  
IP DHCP,
- IP IP 0.0.0.0

" [TCP/IP](#) [12]".

\_\_\_\_\_ [26] - \_\_\_\_\_ [23] \_\_\_\_\_  
( [. 1.1.1](#) [7] ).

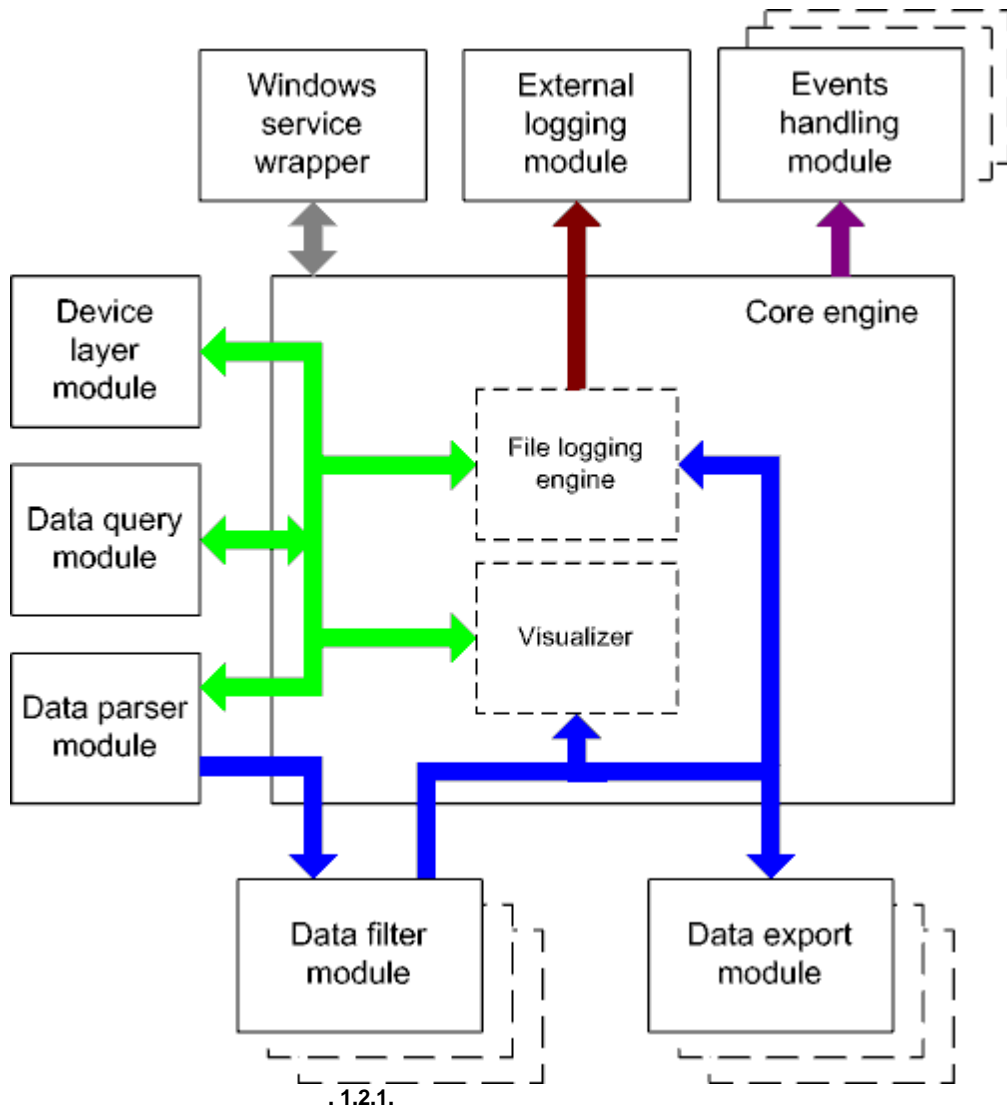
Advanced TCP/IP Data Logger " \_\_\_\_\_ [18] ", \_\_\_\_\_ [37].

Advanced TCP/IP Data Logger \_\_\_\_\_ [29] (plug-ins), Advanced TCP/IP Data Logger.

\_\_\_\_\_ [29] ". "

\_\_\_\_\_ [40] ( [. 1.1.1](#) [7] ), \_\_\_\_\_

4.3



■ - ( ).

■ - ( ).

- Core engine -

- Device layer module -
- Data query module -
- Data parser module -
- Data filter module -
- Data export module -
- Visualizer -
- File logging engine -
- Windows service wrapper -
- External logging module -
- Events handling module -

## 4.4

Windows. / COM-

## 4.5

1.

2.

1.

2.

regedit.exe

Windows x64

HKEY\_LOCAL\_MACHINE\SOFTWARE\Wow6432Node\AGG Software\Advanced TCP/IP Data  
Logger

Windows x32

HKEY\_LOCAL\_MACHINE\SOFTWARE\AGG Software\Advanced TCP/IP Data Logger

3.

Ctrl+S -

Ctrl+D -

Ctrl+P -

Ctrl+L -

log- ;

Ctrl+R -  
Ctrl+E -  
Ctrl+M -

Windows;

4.

..

5.

INI

6.

10

# 5

## 5.1

### 5.1.1

### TCP/IP

#### UDP TCP

(User Datagram Protocol). TCP

TCP (Transport Control Protocol) UDP

IP. TCP

TCP

, TCP

, UDP

UDP

UDP

TCP, UDP

IP

TCP, UDP

UDP

Messaging,

IP.

Instant

Advanced TCP/IP Data Logger

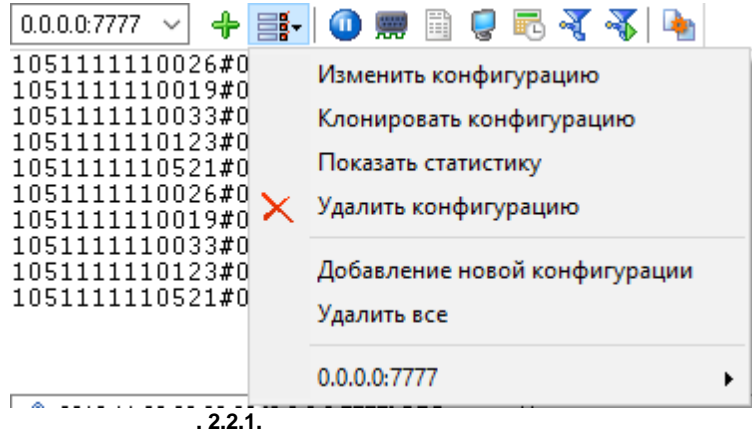
TCP/IP

```

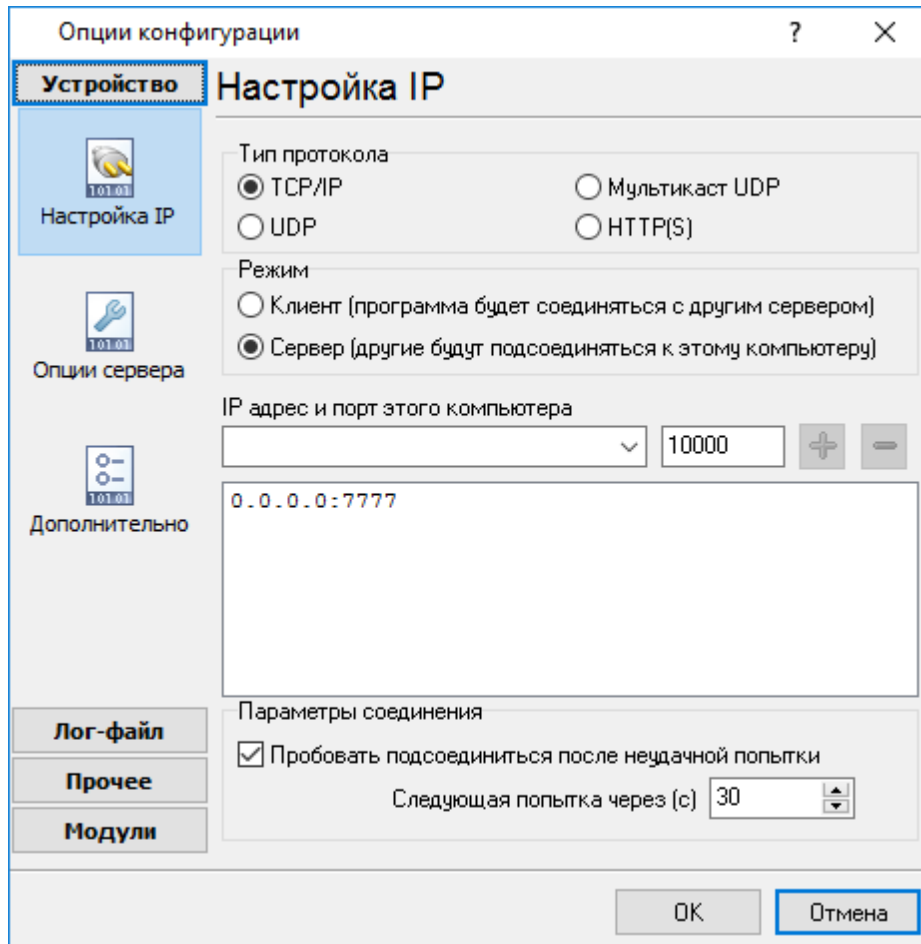
(
TCP/IP) Advanced TCP/IP Data Logger
:
1.
IP
TCP/IP,
Advanced TCP/IP Data Logger
( www.yourserver.com)
"Plant1"
IP
Advanced TCP/IP Data Logger
IP
"Plant1",
IP
2.
IP ;
IP
Advanced TCP/IP Data Logger
(NIC),
IP
Advanced TCP/IP Data
Logger
IP Microsoft Windows, TCP/
IP
IP
"OK"
Advanced TCP/IP Data Logger TCP/
IP.
Advanced TCP/IP Data Logger
IP
Advanced TCP/IP Data Logger
( . 1.1.1 | 7 ).
( . 1.1.1 | 7 )
" "
( . 2.2.2).
IP"
TCP/IP
" " ( . 2.2.1).

```





IP: IP " IP" TCP/



IP , , .  
 , , ,  
 SMTP - 25, the telnet - 23, NNTP -  
 119, . . .  
 SERVICES, Windows ( Windows NT  
 WINNT\SYSTEM32\DRIVERS\ETC). SERVICES -  
 Advanced TCP/IP Data Logger  
 ( , )  
 ( , ).

IP (socket).  
 , , ,  
 , , , IP  
 " " IP  
 ( , ).

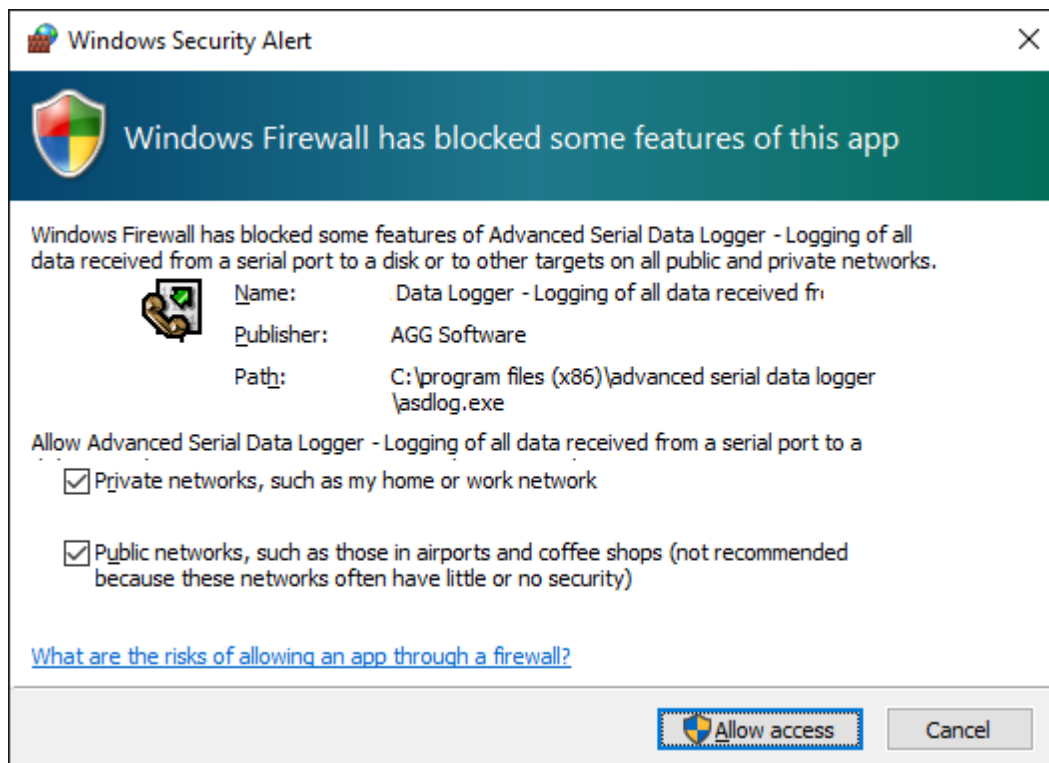
( , ) ( )  
 " , Advanced TCP/IP Data Logger  
 N , "

(c).  
 IP  
 , IP  
 , IP  
 Advanced TCP/IP Data Logger IP  
 " "

**(firewall)**

Microsoft Windows XP SP2 , Advanced TCP/IP

Data Logger . Windows Firewall, ,  
Windows Firewall ,  
(Security Alert).



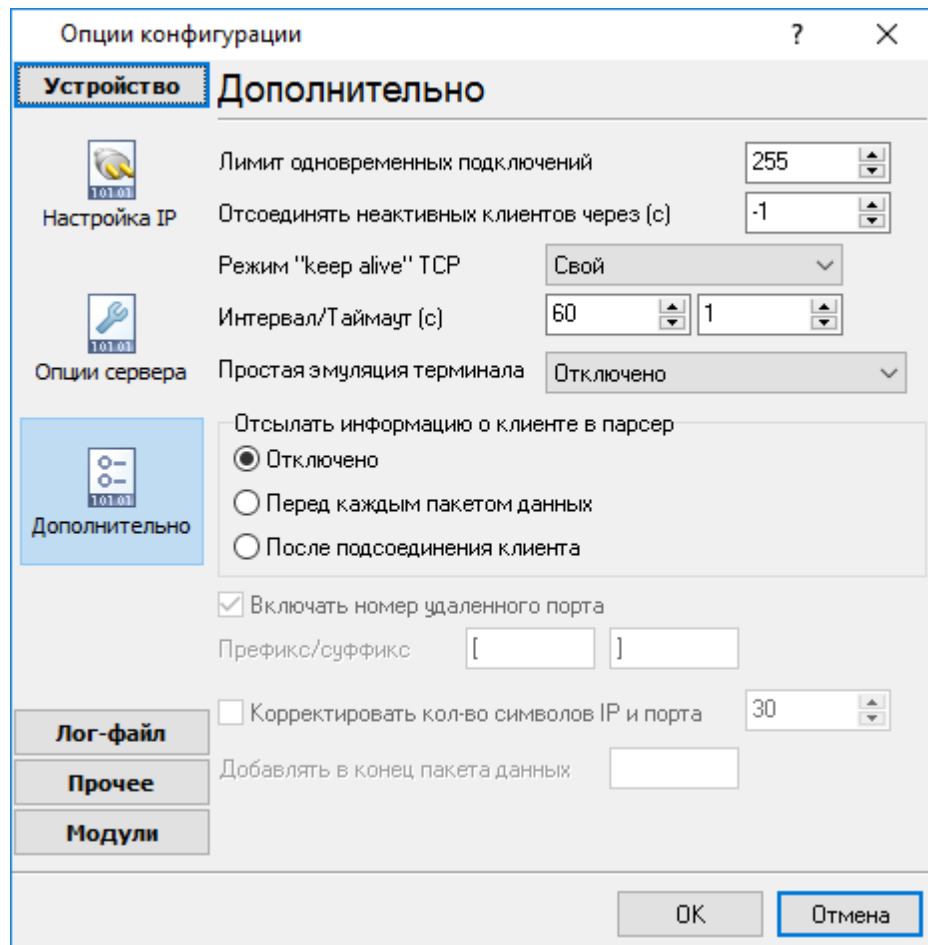
. 2.2.3.

• ;  
• ;  
• ;  
: ;  
" " TCP/IP  
( . 2.2.4).

"TCP/IP" :

( ) -

"-1",



. 2.2.4.

TCP/IP

keep-alive TCP ( ) -

keep-alive,

Windows.

: keep-alive

(TCP

UDP):

## 5.2

### 5.2.1

3.1.1):

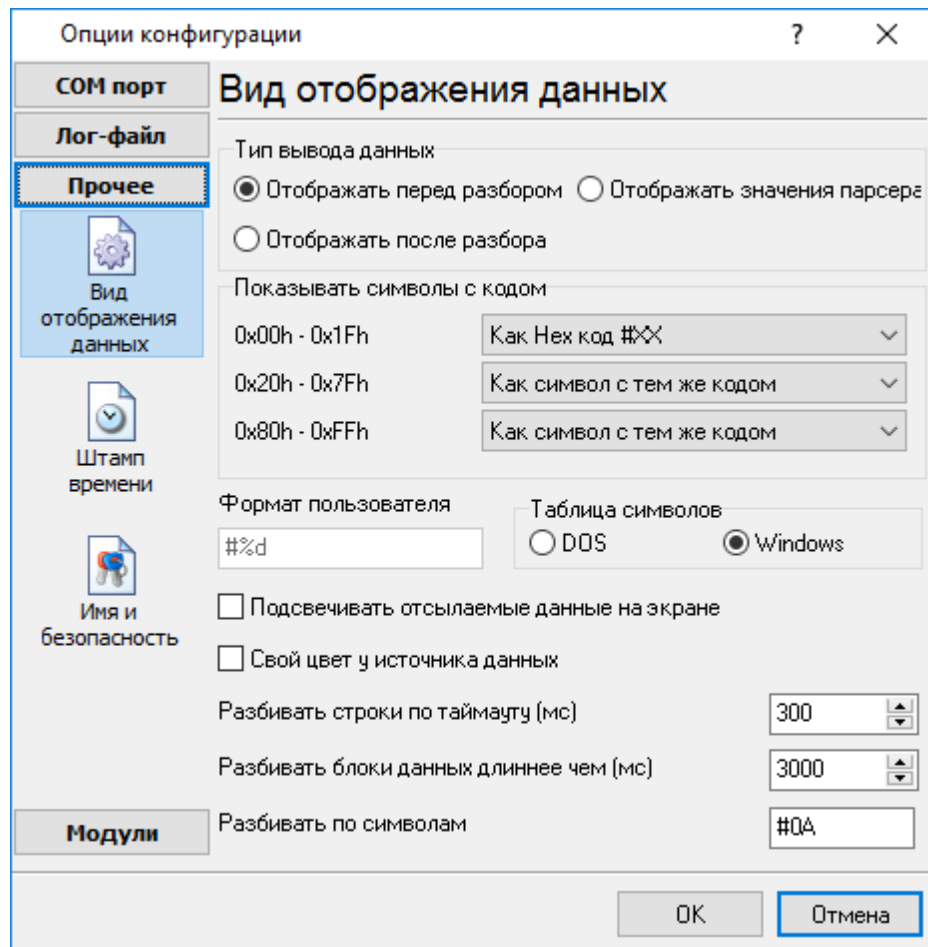
([.1.1.1](#)<sup>7</sup>)

2

(

1.

2.



. 3.1.1.

" - " ( . 3.1.1)

Hex-

,%d

,%x -

: Windows DOS

(OEM).

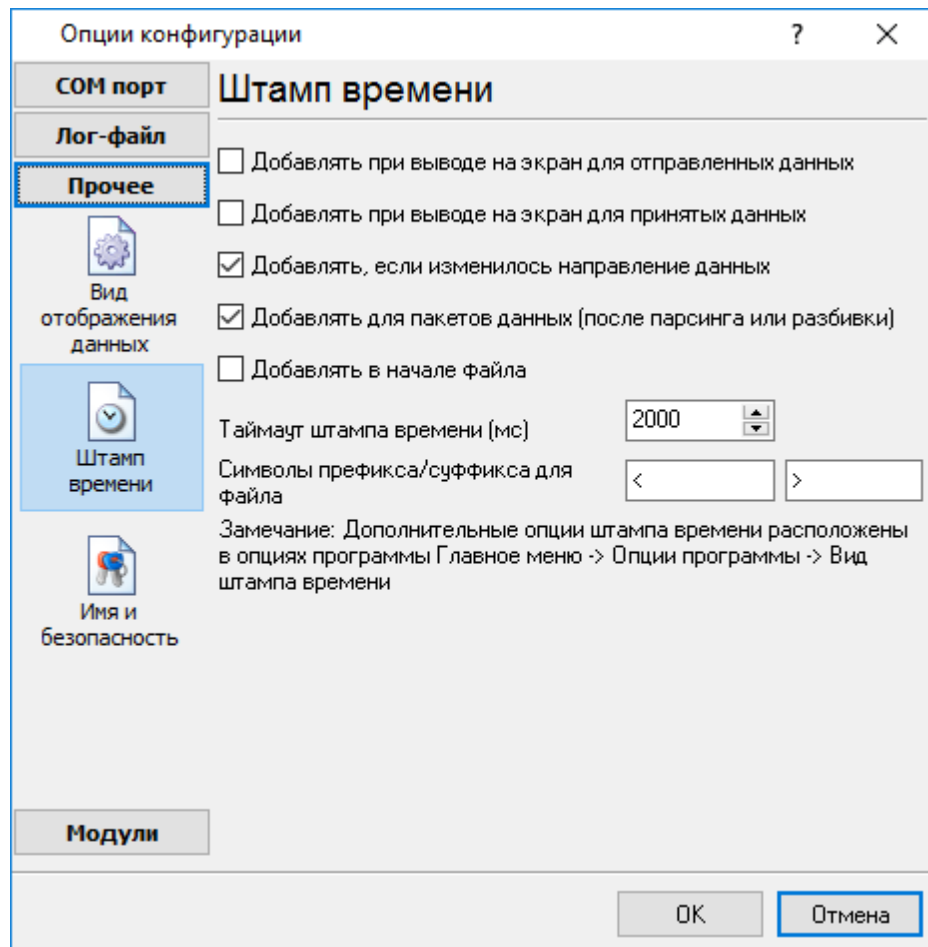
0,  
0,  
3.1.1

5.2.2

( . 3.2.1)

( )

           39.



. 3.2.1.

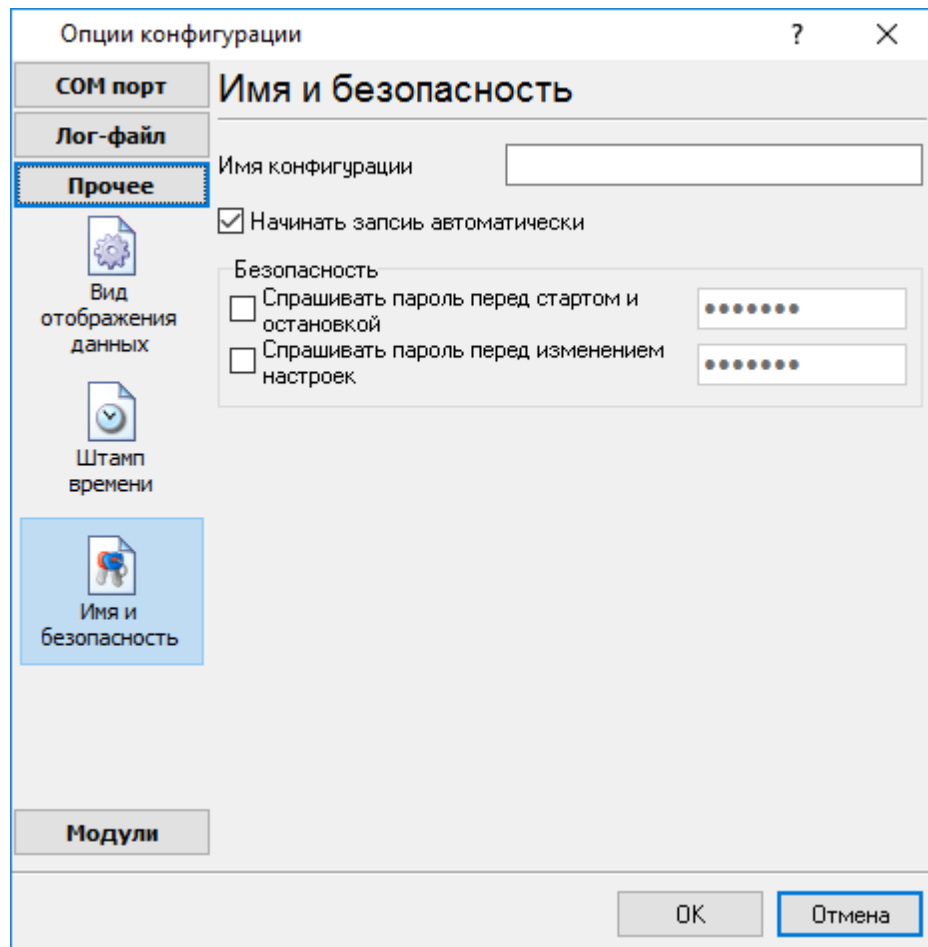


:>#0D#0A

### 5.2.3

( . 3.3.1)

-  
.  
-  
.  
"  
"  
,  
45,  
"  
/  
"  
-  
.  
-  
.

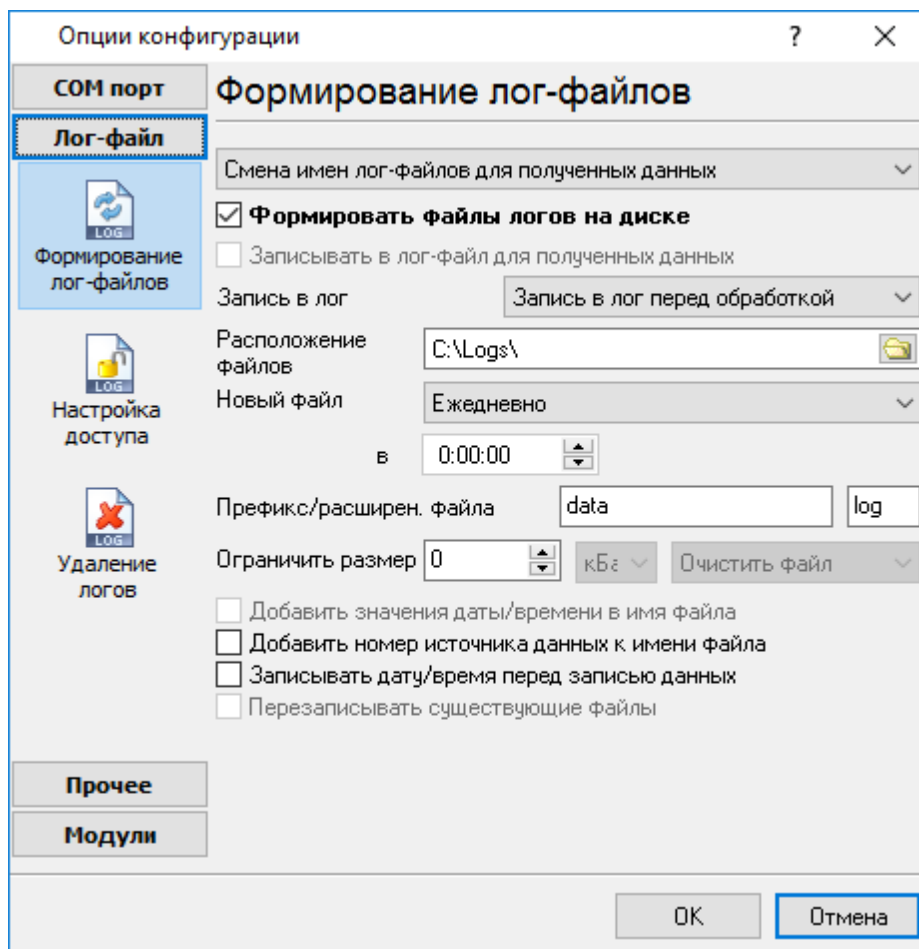


. 3.3.1.

## 5.3

## 5.3.1

( . 4.1.1).



. 4.1.1.

"OK".

Advanced TCP/IP Data Logger

"sample",

"log ",

```

" " " " "sampleYYYYMMDD.
log". 21- " 2003 - "sample20030321.log".
• ( ).
, , , .
" " :
1. - , .
DDMMYYYY, DD - , MM -
YYYY - ;
2. - .
MMYYYY;
3. -
YYYYMMDD;
4. -
, . : sample00000001.log.
5. - ;
6. - .
WWYYYY, WW -
, YYYY -
7. ;
8. - .
HHDDMMYYYY;
9. - -
, .
:
d - , (1 - 31);
dd - , (01 - 31);
ddd - ( - )
;
dddd - ( - )
;
m - , (1 - 12);
mm - , (01 - 12);
mmm - ( - )
;
mmmm - ( - )
;
yy - (00 - 99);
yyyy - (0000 - 9999);
h - , (0 - 23);

```

```

hh - , (00 - 23);
n - , (0 - 59);
nn - , (00 - 59);
s - , (0 - 59);
ss - , (00-59).

```

```

: "sample_log", "txt".
: = sample_log_, = txt ( !).
HHDDMMYYYY.

```

```

4 7 /

```

sample20030321.log.

```

/ , COM1-

```

```

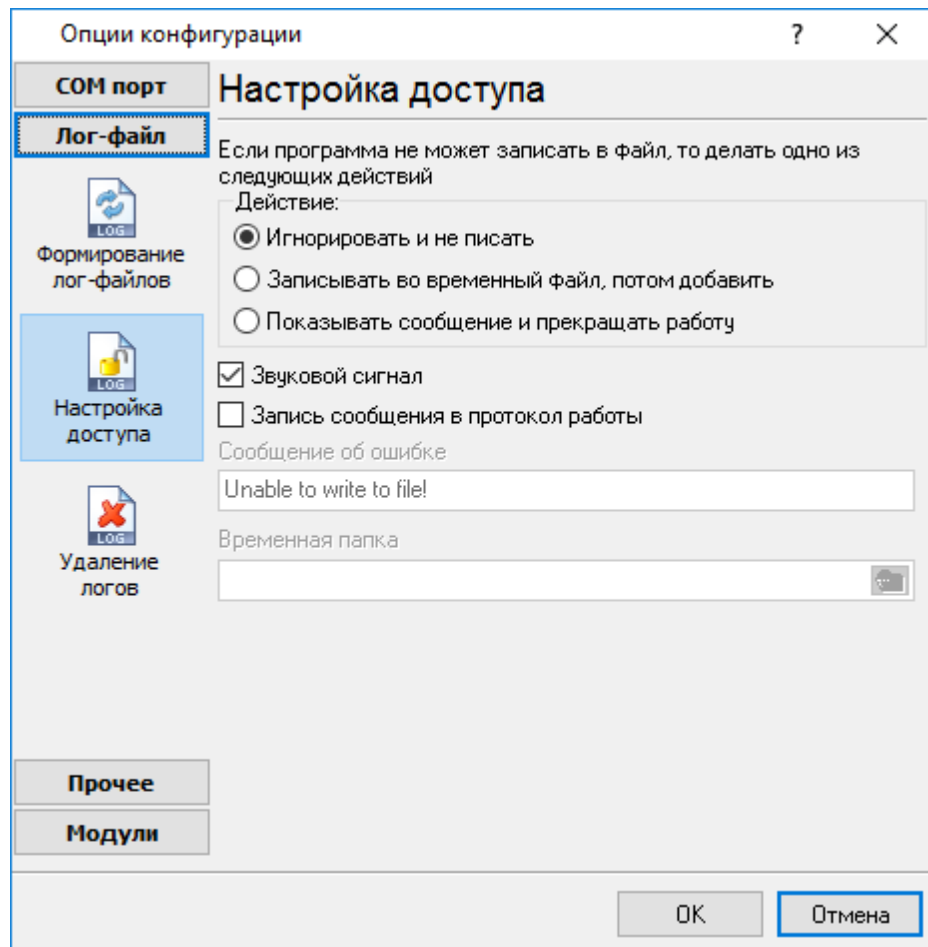
4 7.

```

1. !
2. -
3. ( ) -
4. ( ).

### 5.3.2

Microsoft Office ( , Microsoft Word),  
Advanced TCP/IP Data Logger



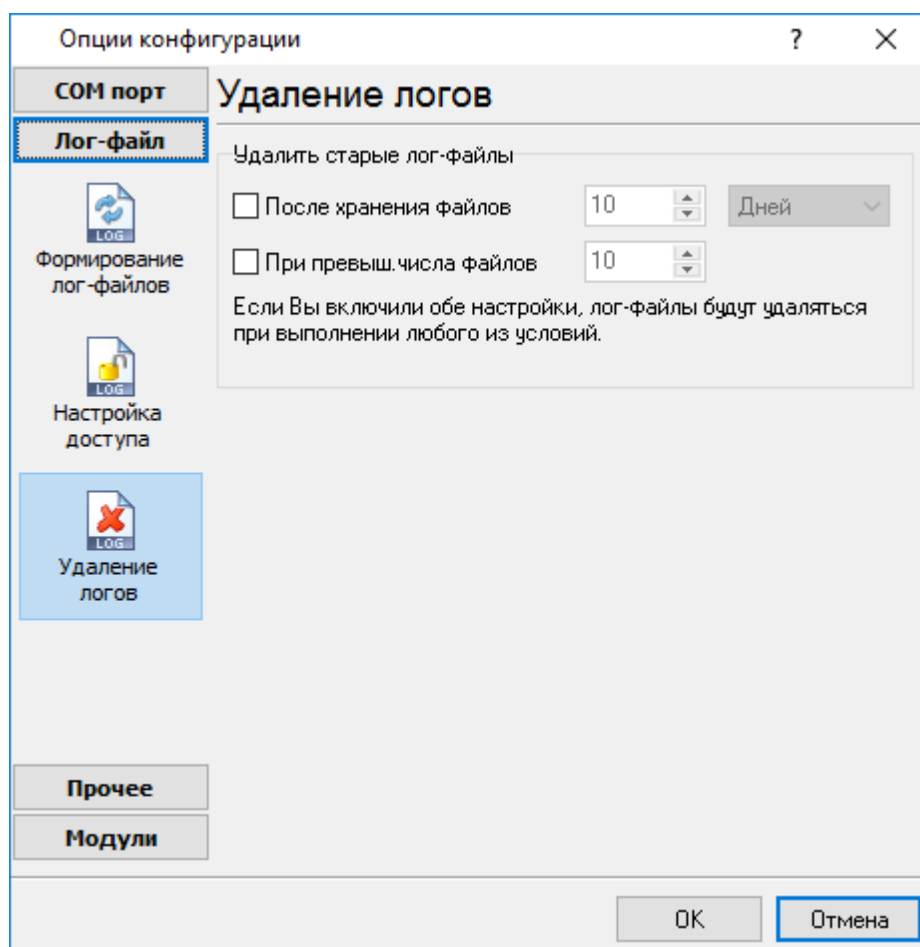
. 4.2.1.

Advanced TCP/IP Data Logger  
( . 4.2.1),

- 
- 
-

## 5.3.3

(рис. 4.3.1).



. 4.3.1.

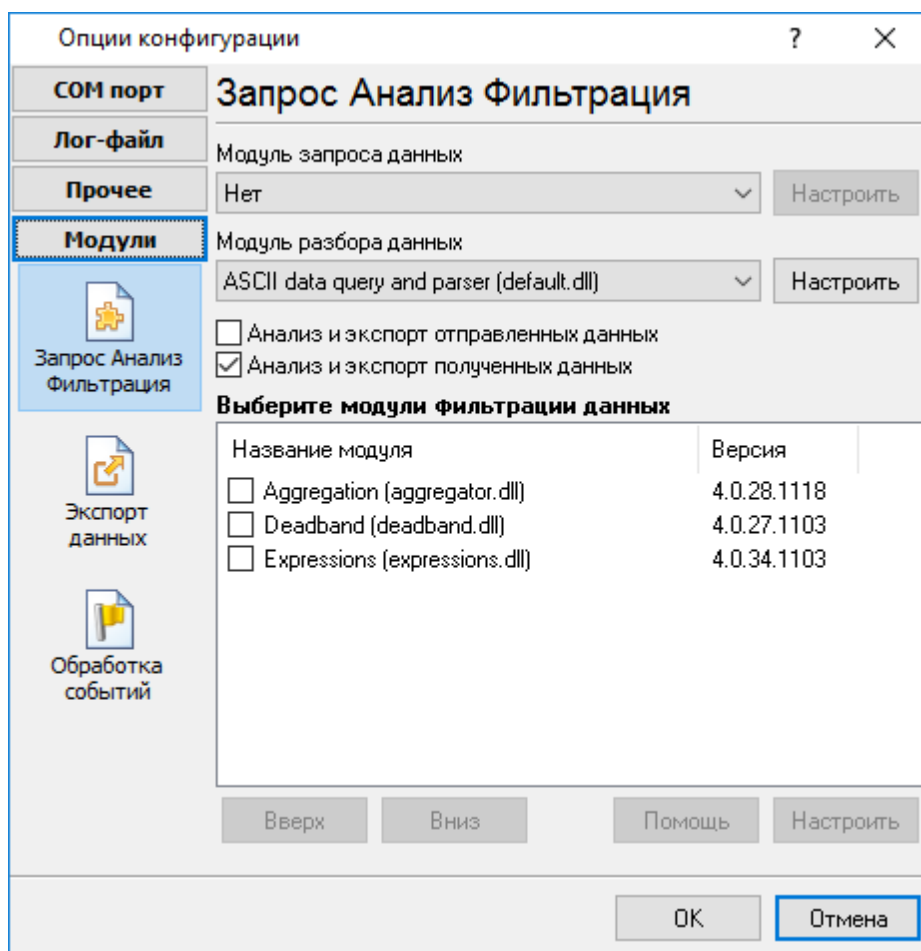
## 5.4

### 5.4.1

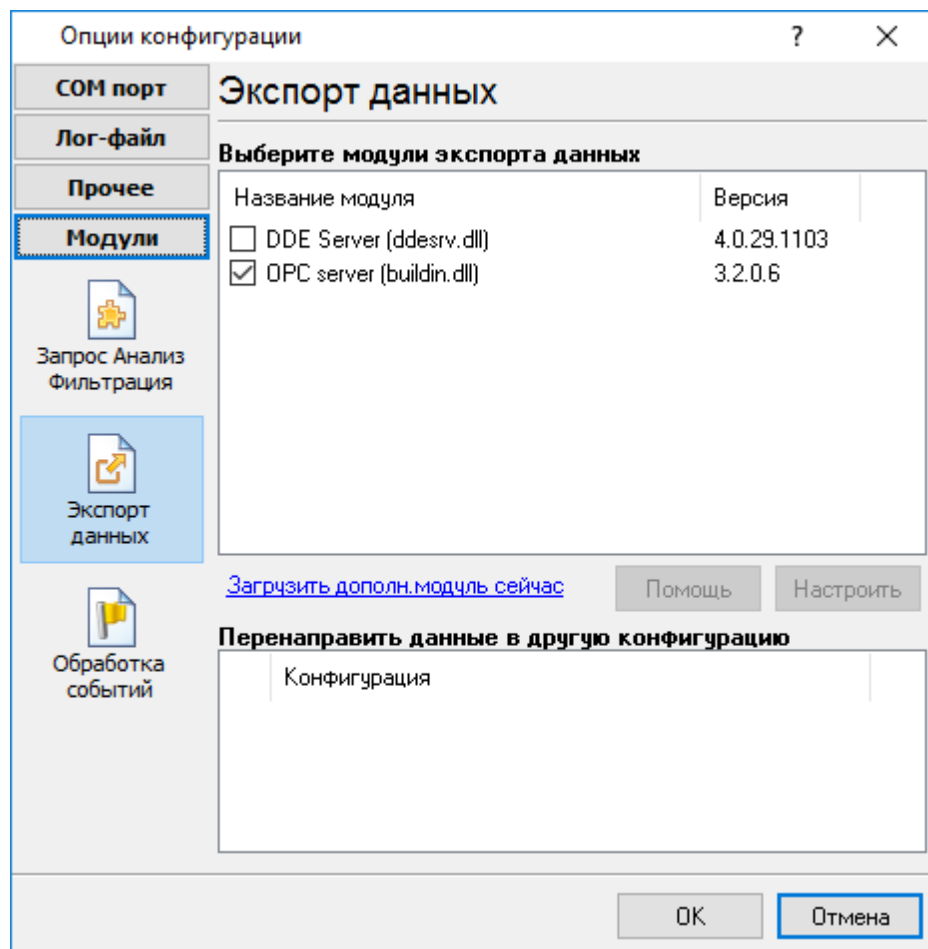
Advanced TCP/IP Data Logger :

- -
- ; ( , , ) - ( )
- - ;
- - ;
- , Excel ;
- ( . 5.1.3) - Advanced TCP/IP Data Logger. , " - " "

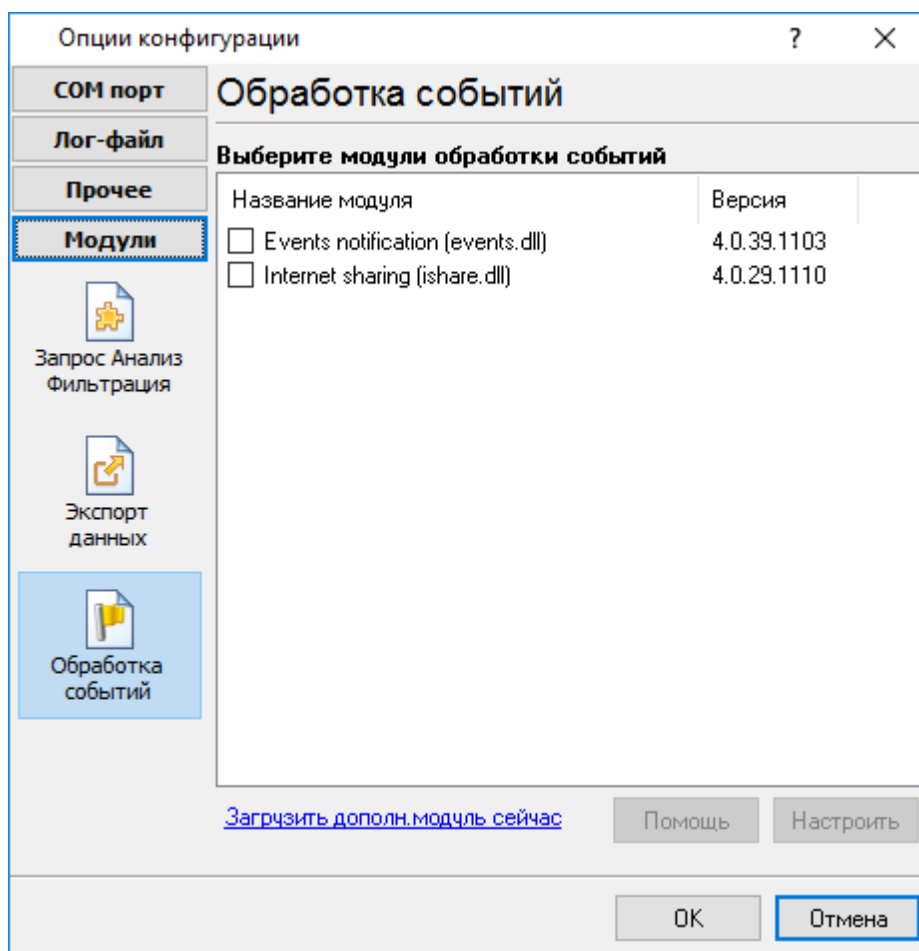




. 5.1.1.



. 5.1.2.



. 5.1.3.

"OK".

## 5.4.2 OPC

Advanced TCP/IP Data Logger

OPC.

Data Logger

OPC

Advanced TCP/IP

( 5.2.1).

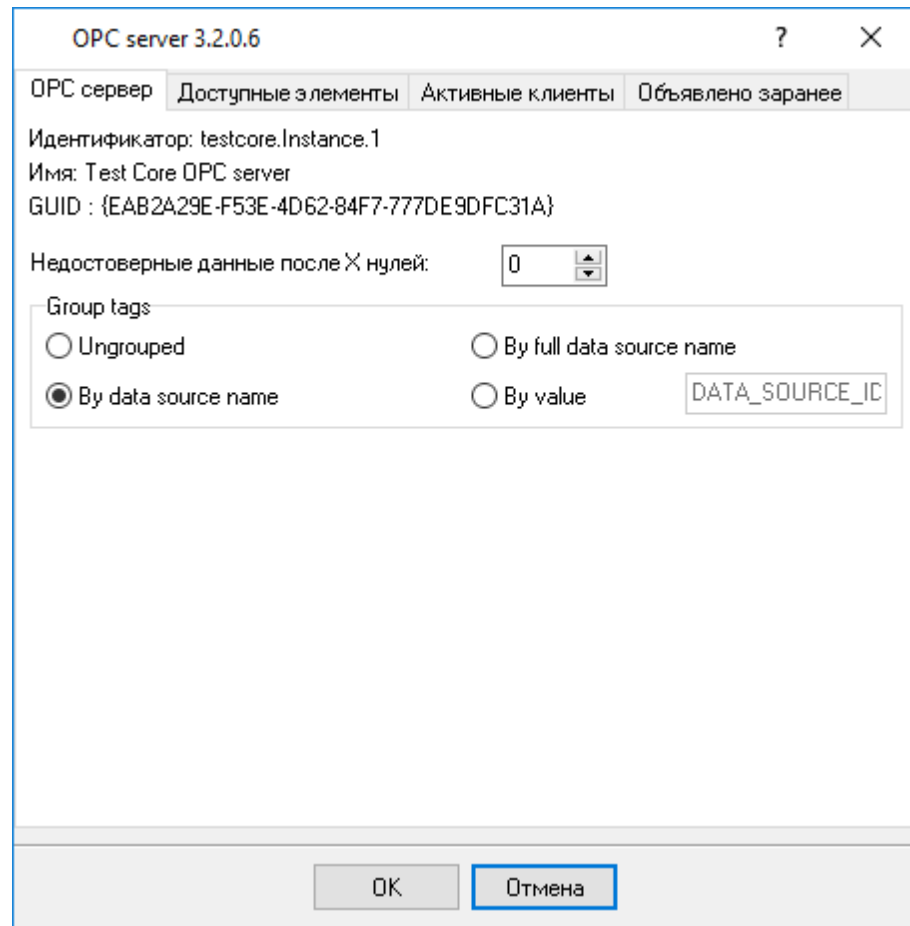
OPC  
[opcfoundation.org](http://opcfoundation.org) (

OPC Core Components Redistributable  
 )

[www.](http://www.)

OPC

OPC



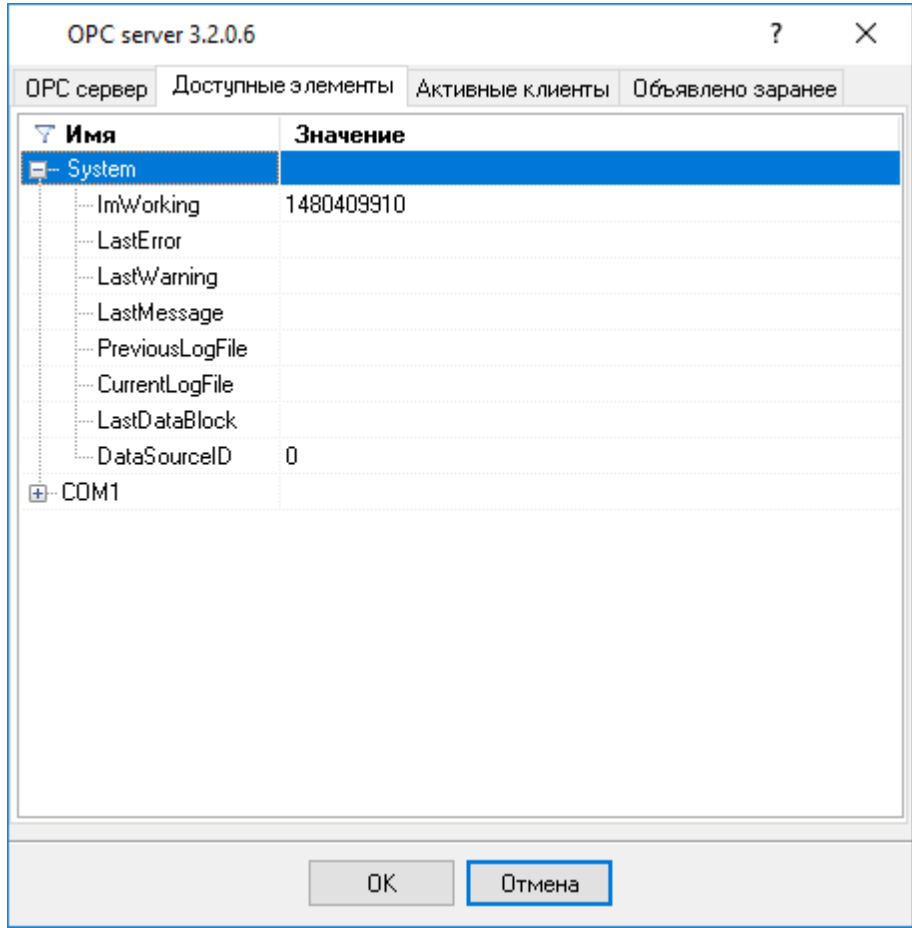
. 5.2.1.

OPC

Advanced TCP/IP Data Logger,

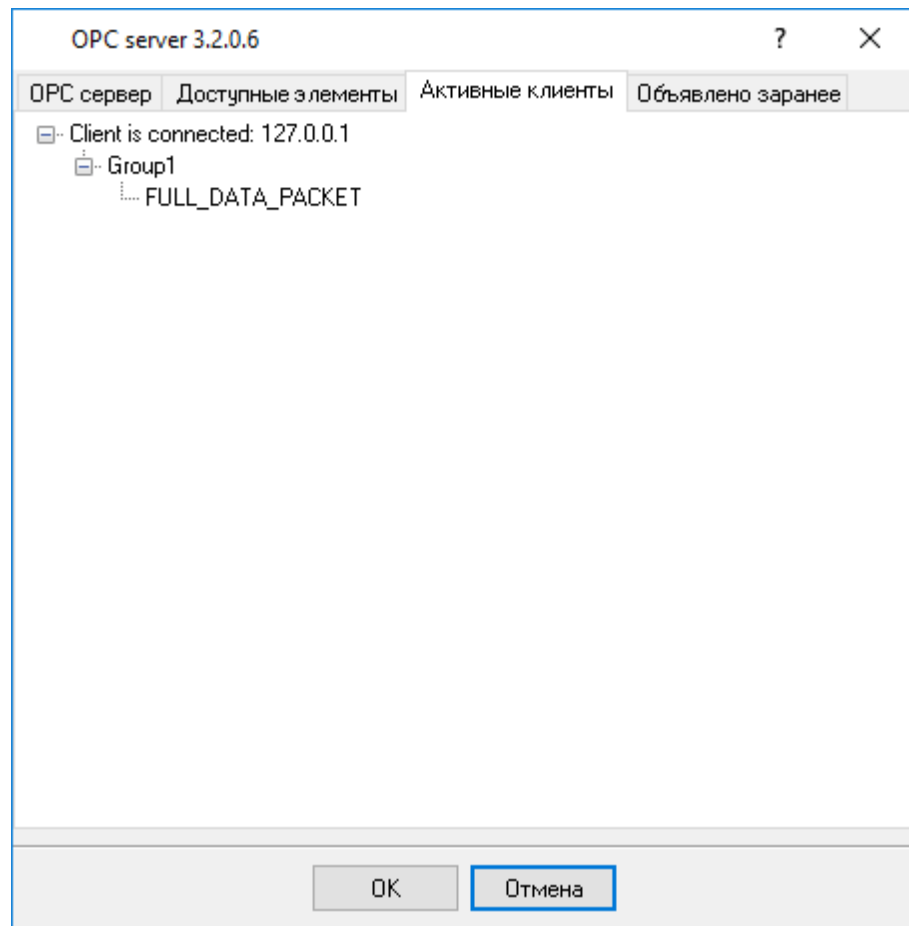
OPC ( .2).

OPC



. 5.2.2.

OPC



. 5.2.3.

Advanced TCP/IP Data Logger

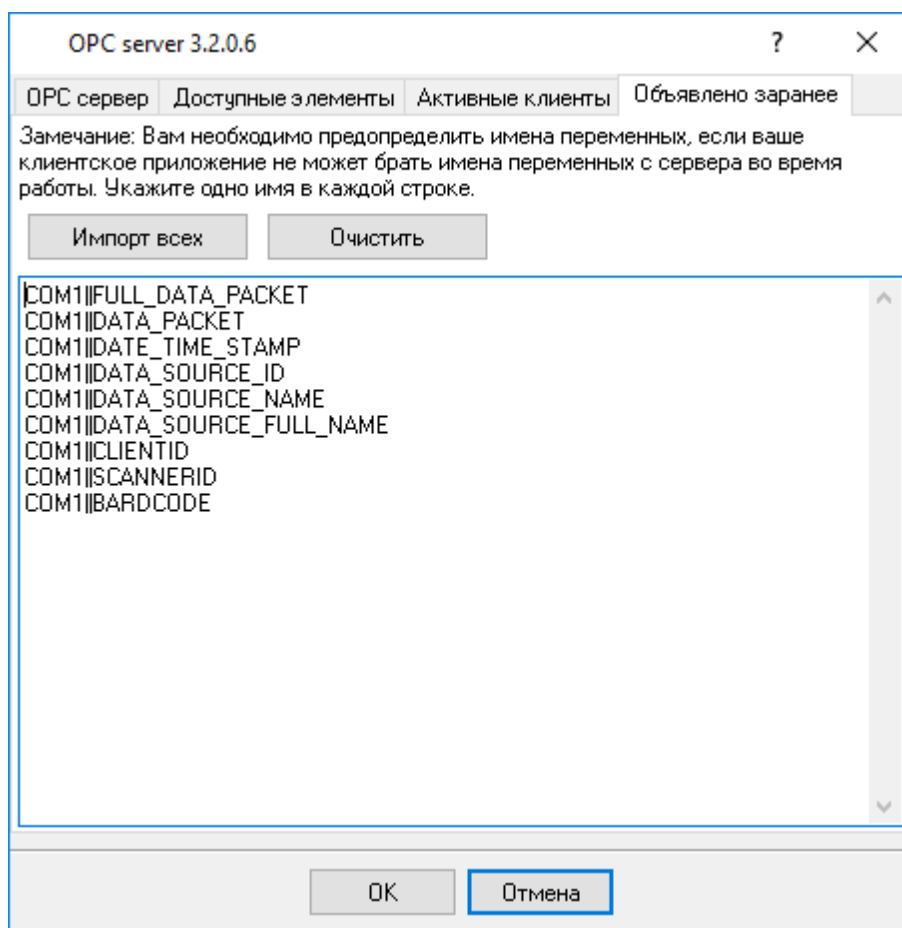
"

". Advanced TCP/IP Data Logger

OPC

( .4).

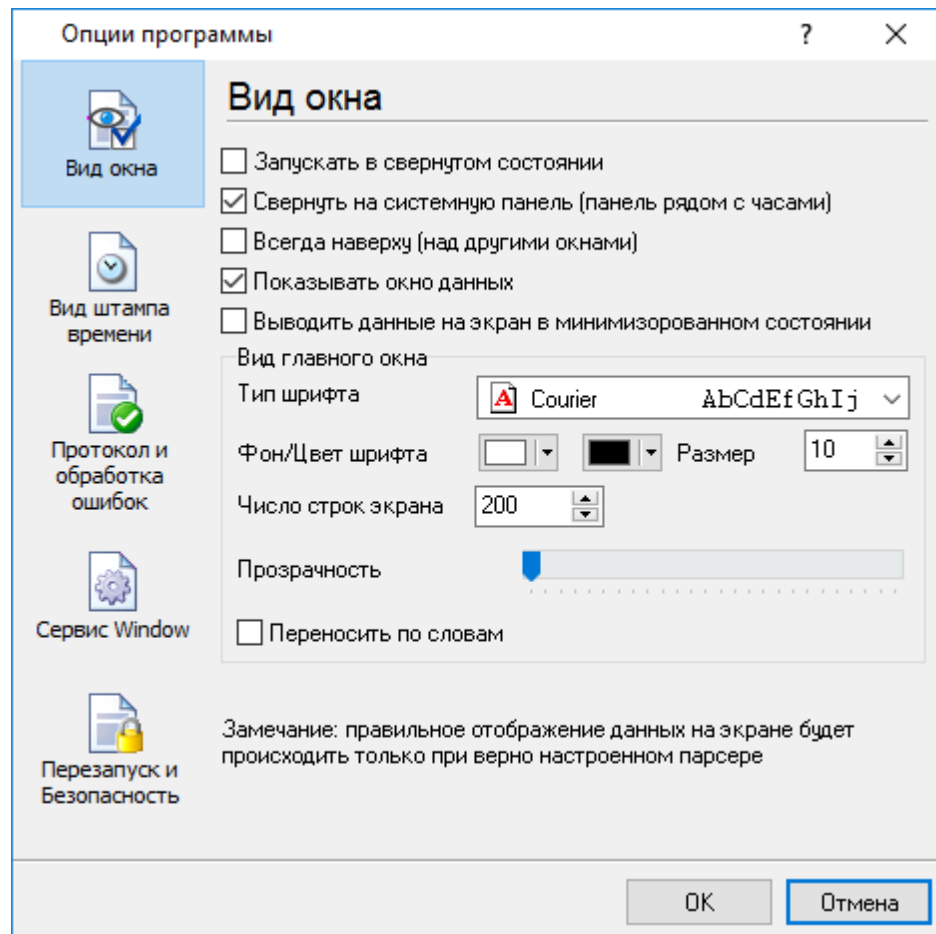
OPC  
OPC



. 5.2.4.

## 5.5

## 5.5.1

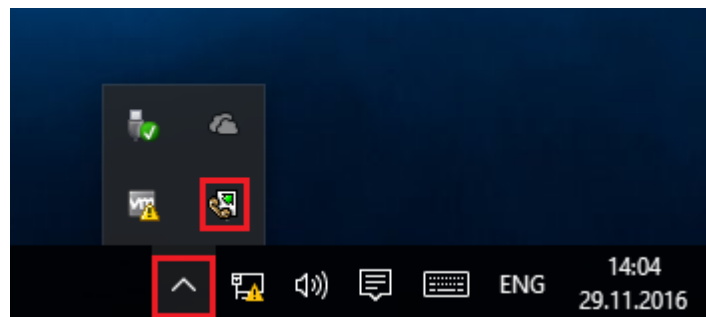


. 6.1.1.

" ( . 6.1.1) :

- Advanced TCP/IP Data Logger

( . 6.1.2) ;





. 6.1.2.

-

( . 6.1.2) -

Advanced TCP/IP Data Logger

;

-

;

- /

.

.

-

,

;

);

-

;

- Windows 2000

.

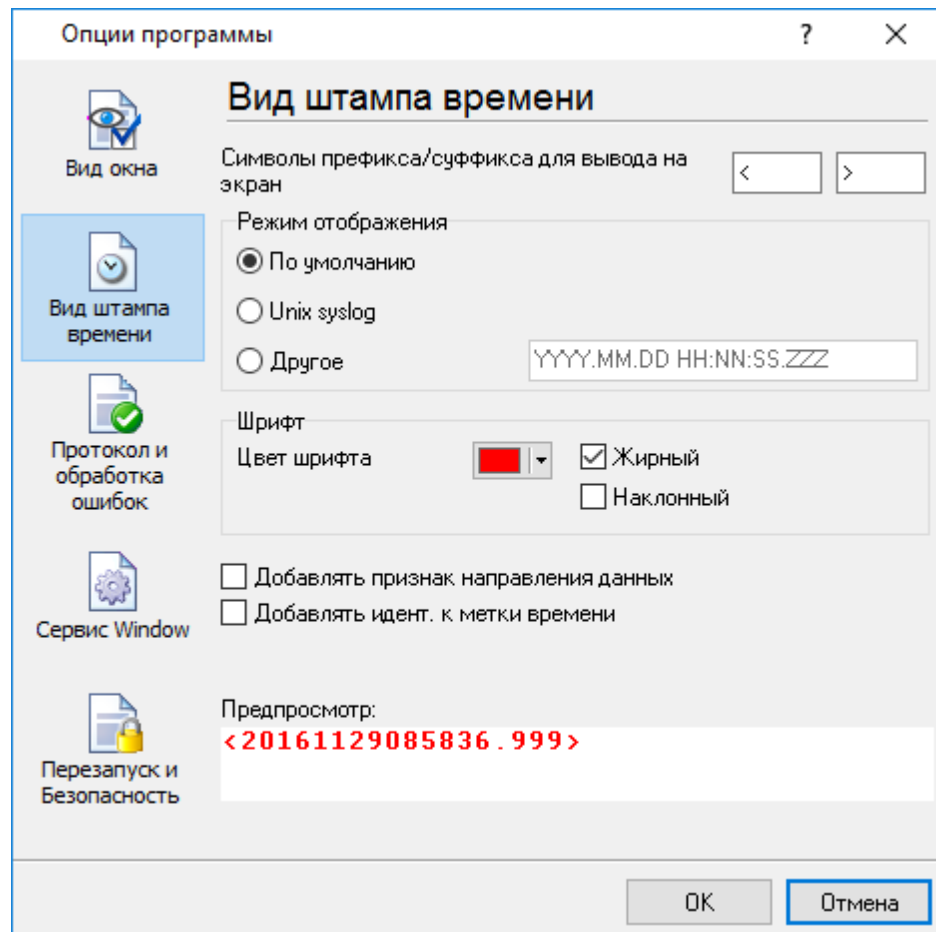
-

,

.

## 5.5.2

( . 6.2.1)



. 6.2.1.

/

201

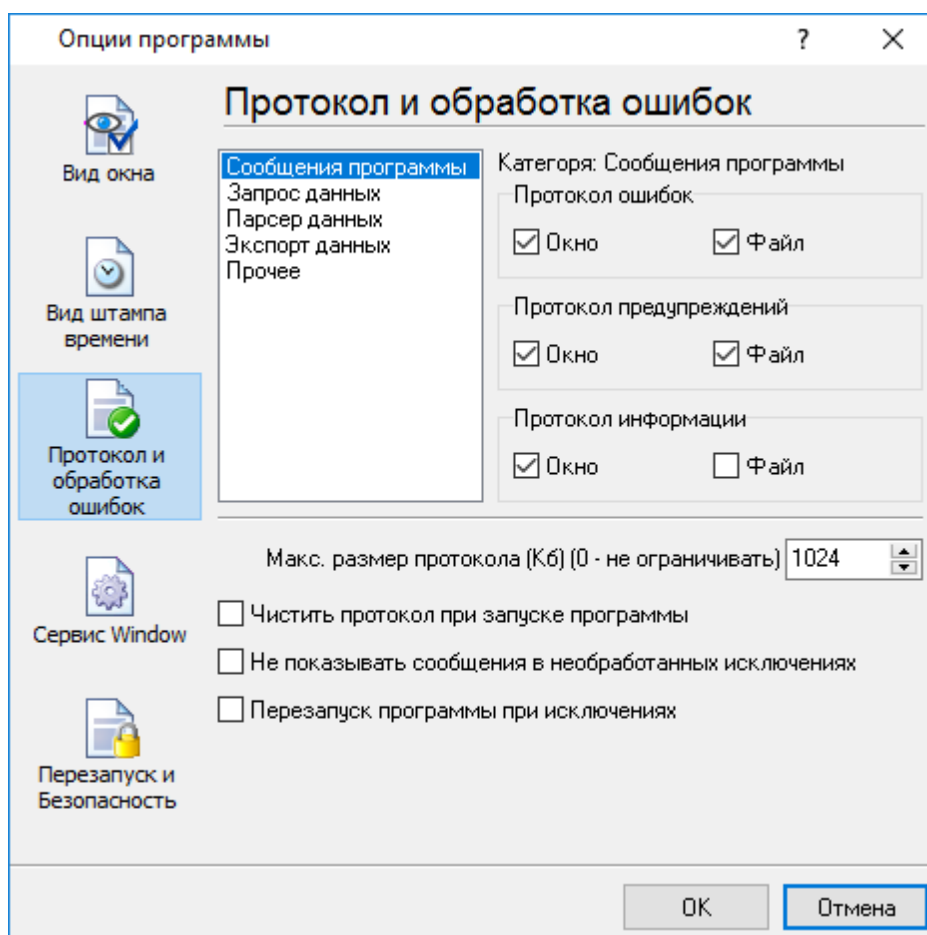
TX

RX

, COM1.

## 5.5.3

.log.



. 6.3.1.

Advanced TCP/IP Data Logger

3-

- 
- 
-

Advanced TCP/IP Data Logger

5.5.4  
5.5.4.1

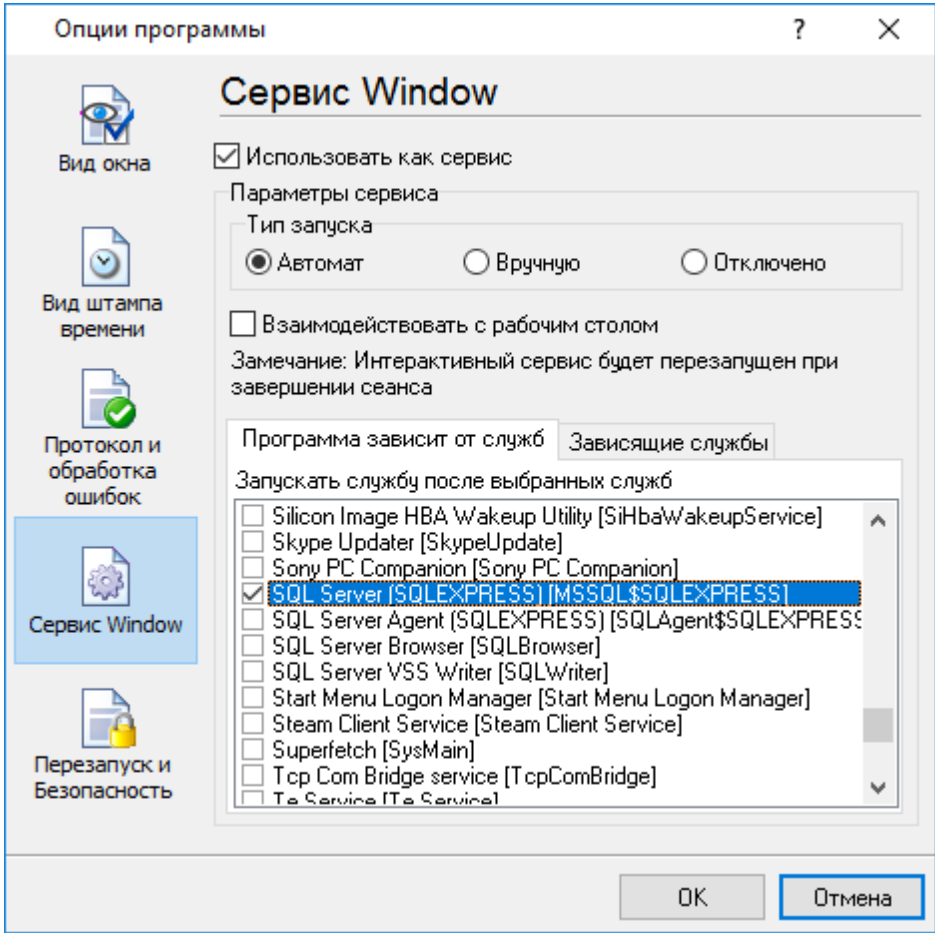
Windows 2000

( ) Windows :

- 2000 );
- - ( );
- ;
- 

Windows Vista  
(elevated)

Windows" ( . 6.4.1).



. 6.4.1.

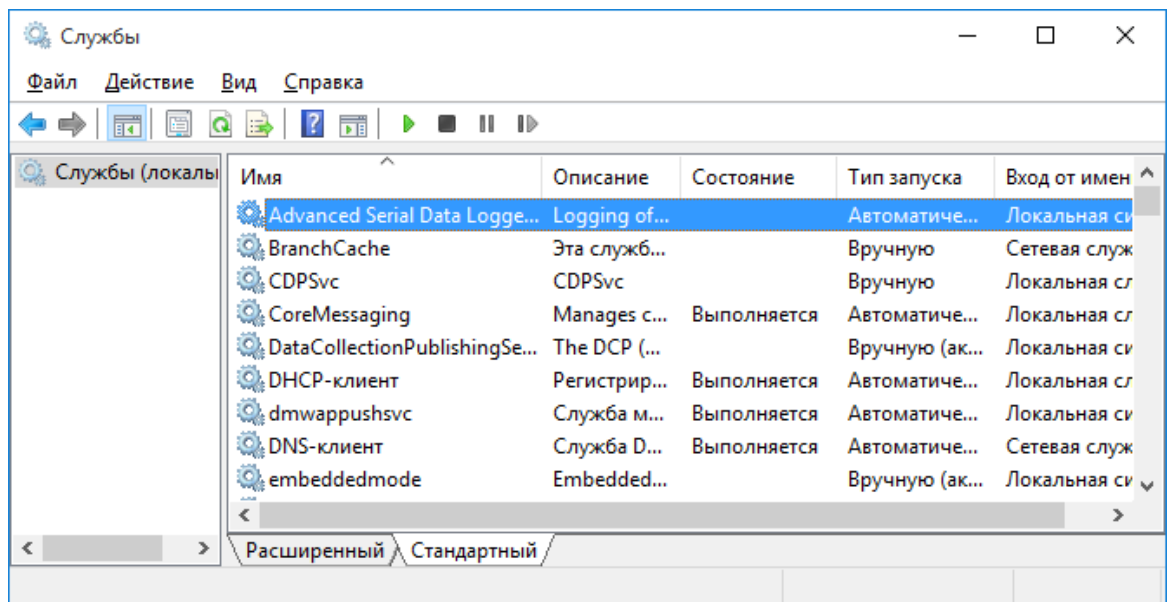
1. - Windows
  2. - ; " " ;
  3. - .
- " .
- ( . 6.4.2).
- " , . . Windows



. 6.4.2

Advanced TCP/IP Data Logger, " ( . 6.4.1)

( . 6.4.3).

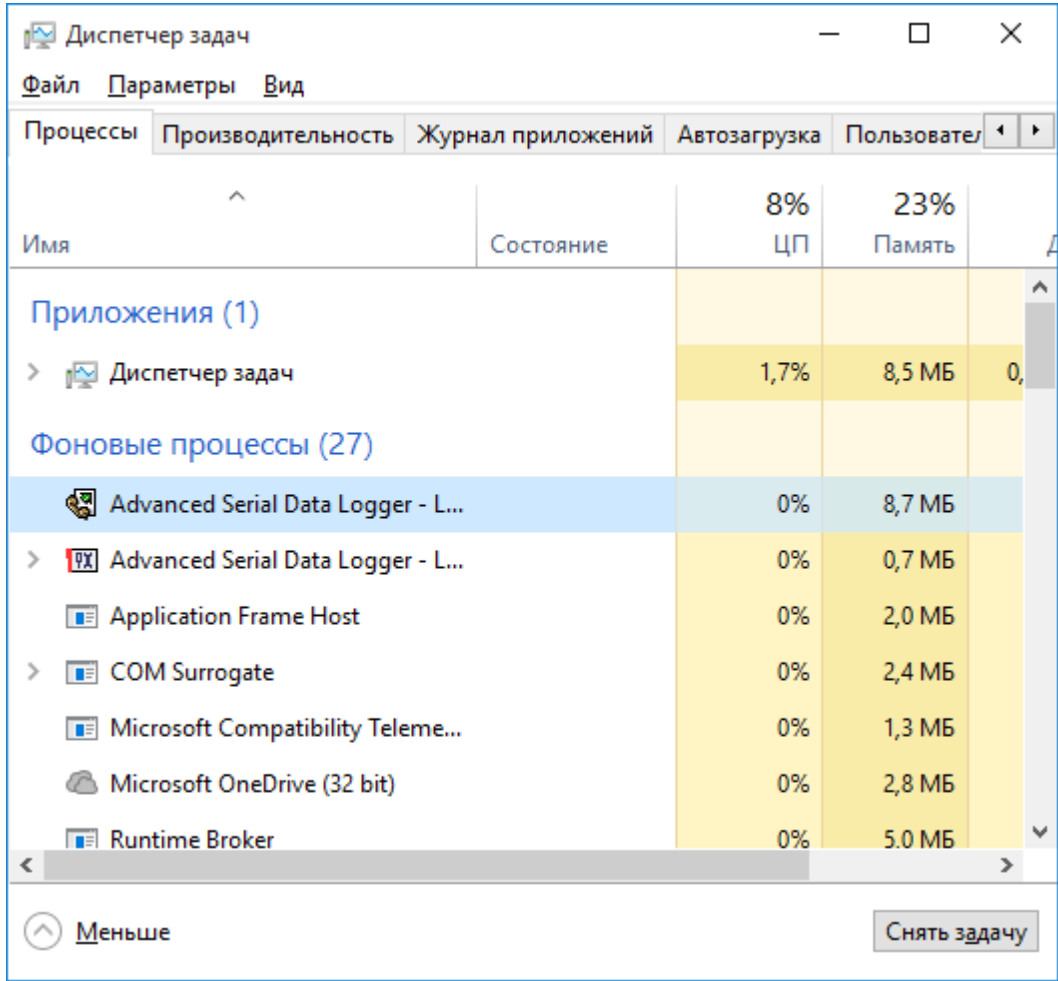


. 6.4.3.

( Windows 2000)

( . 6.4.4). Advanced TCP/IP Data Logger

Advanced TCP/IP Data Logger,  
svany.exe



. 6.4.4.

srv.exe : aipdlog

- /? - ;
- /I - ;
- /A - ;
- /D - ;
- /R -

5.5.4.2 Windows Vista

Windows Vista

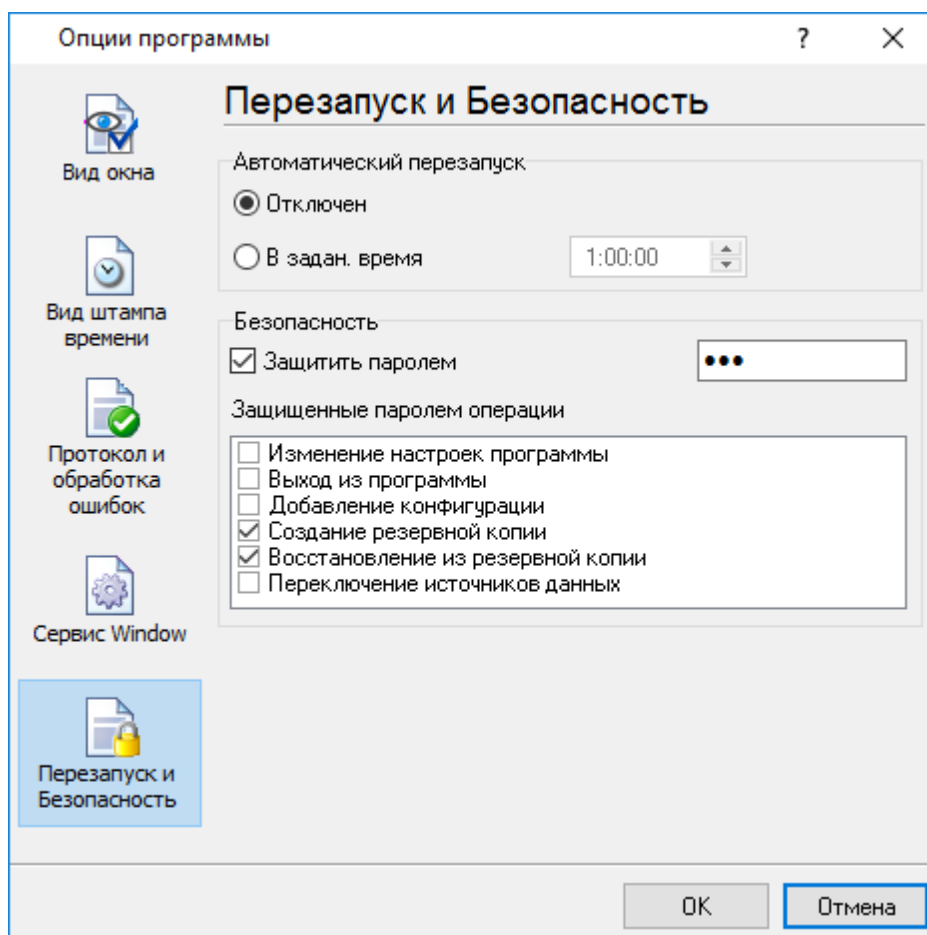
Windows.

- : Interactive Services Detection
  - : UIODetect
  - : UIODetect.exe
  - :
  - : %windir%\system32\UIODetect.exe
  - :
- \* Home Basic:  
\* Home Premium:  
\* Business:  
\* Enterprise:  
\* Ultimate:

## 5.5.5

( . 6.5.1).





. 6.5.1.

" "

6

?

6.1

, . . .

SoftIce

[support@aggsoft.ru](mailto:support@aggsoft.ru)