



COM Port Data Emulator

1		1
2	,	1
1	1
2	2
3		3
1	3
2	3
4		3

1

COM Port Data Emulator

, COM

, Ethernet,

RS232, TCP/IP UDP

COM Port Data Emulator

SCADA

- COM, RS232, RS485 (), TCP/IP, UDP;
- ;
- COM RS232;
- TCP/IP;
- ;
- COM RS232, ;
- ;

2

2.1

Copyright © 1999-2025 AGG Software.
All Rights Reserved

- 1. COM Port Data Emulator -
- 2.
- 3. COM Port Data Emulator ,
- 4. , ,
- 5. COM Port Data Emulator
sales@aggsoft.ru
- 6. COM Port Data Emulator , ,
COM Port Data Emulator
- 7. **COM Port Data Emulator** "AS IS".
- 8. , , , , , , , , , ,
, , , , , , , , , ,
- 9. COM Port Data Emulator ,
- 10. - , ,
COM Port Data Emulator
COM Port Data Emulator.

2.2

COM Port Data Emulator	https://www.aggsoft.ru/support/
------------------------	-------------------------------------------------------------------------------

3

3.1

- Windows 2000 SP 4 - Windows 11 (x86 x64,).

' (, '), , COM- , .

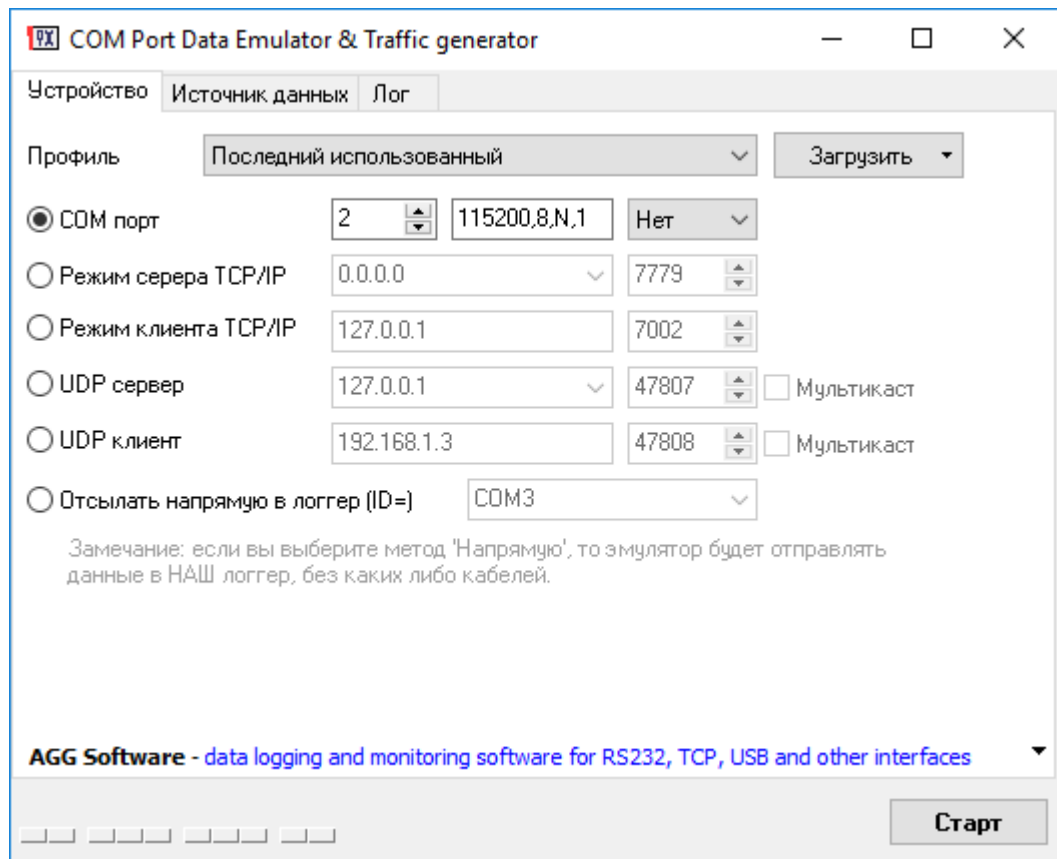
3.2

COM Port Data Emulator.

, COM Port Data Emulator "\Programs Files\COM Port Data Emulator"

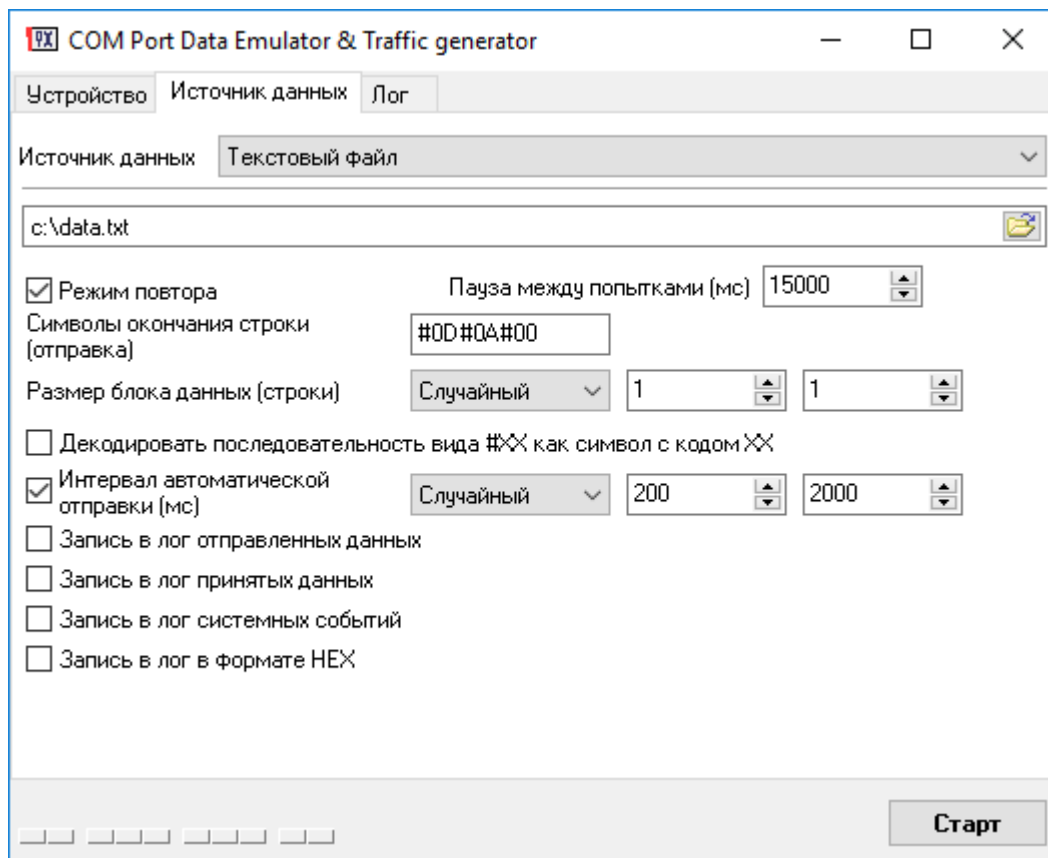
COM Port Data Emulator

4



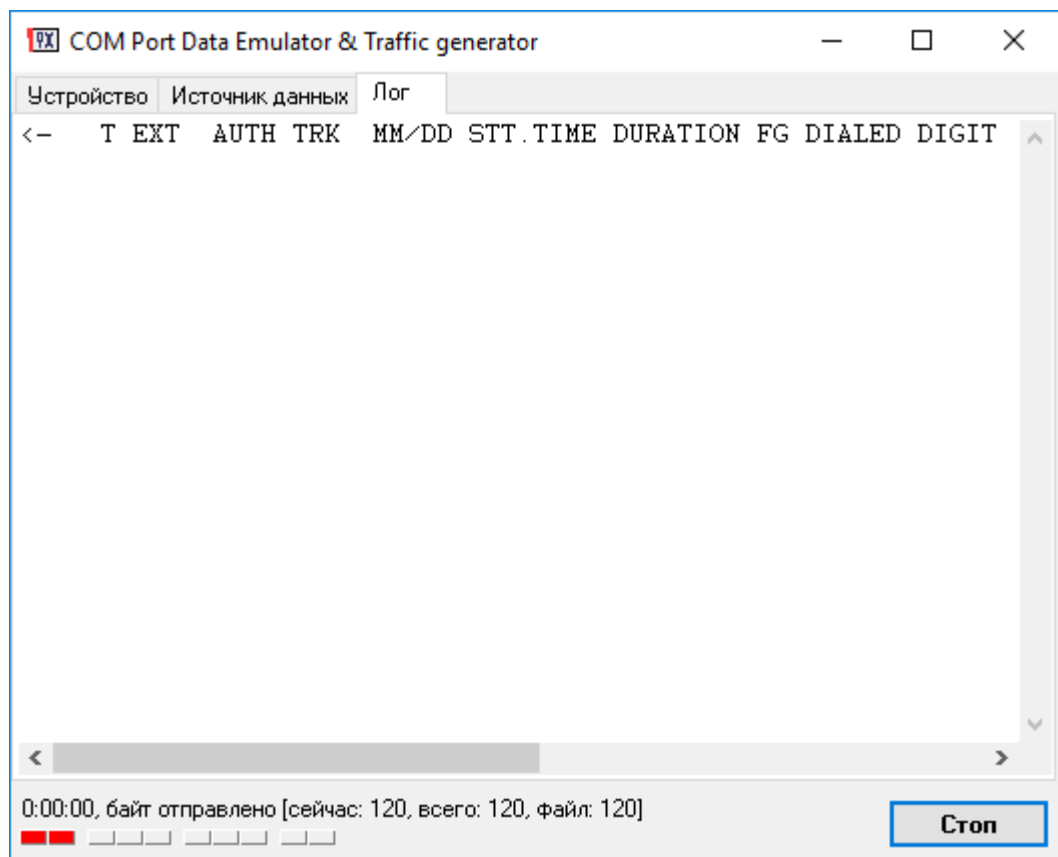
1. : COM , TCP/IP , TCP/IP , UDP
2. ;
3. " " ;
- (COM) :
1. COM ;
2. : : N - , E - , O - , S - , M - .
3. : (XON/XOFF) (RTS/CTS).
- TCP/IP UDP :**
1. IP , "0.0.0.0"
2. ,
- TCP/IP UDP :**

1. IP
- 2.



1. - ASCII.
2. -
3. -
4. -
5. -

ASCII #0D, 0D ASCII
<CR>.
#XX XX -
()
ASCII #0D, 0D
ASCII <CR>.
"asdlog.exe.log".



"<--"

#00.

">--"

.