



Advanced OPC Data Logger

1		1
1	Advanced OPC Data Logger	1
2	2
2		4
1	4
2	5
3	5
4	6
3		6
1	6
2	6
4		6
1	6
2	8
3	9
4	10
5	10
5		11
1	OPC	11
	OPC	11
	"Cron"	21
2	23
	23
	24
	26
3	-	27
	-	27
	-	30
	32
	CSV -	33
4	33
	33
5	37
	37
	39
	40

		II
	Windows 2000	41
		41
	Windows Vista	44
		45
6	?	46
1		46

1

1.1 Advanced OPC Data Logger

OPC (OLE for Process Control) -

OPC Data Logger
 Oracle ODBC, DDE, Excel, MSSQL, MySQL, Access, OPC Data Logger, OPC, SCADA.

Advanced OPC Data Logger:

- OPC
 - OPC DA1, DA2.
 - OPC
 - OPC
 - MS Excel.
 - (MS SQL, Oracle, MS Access, dBase
 - DDE OPC
- MS Excel;
 MSSQL, MySQL, ODBC-
 Advanced OPC Data Logger
 comma separated (CSV)

- ; ,
 - ;
 - ;
 - Windows
 - 9x/Me/NT/2000/XP/Vista, x32, x64.
 - Windows. Advanced OPC Data Logger
 - Windows NT/2000/XP/Vista,
 - !
 - Advanced OPC Data Logger,
 - !
- : <http://www.aggsoft.ru/>
: <http://www.aggsoft.ru/opc-data-logger.htm>

1.2

- ASCII** - ASCII -
- Windows
ASCII. ASCII *.TXT (,
README.TXT).
- Binary File** - ASCII (0 255).
- Bytes** () - , , .
- Bit** () - : 0 1. 8
8 () .
- Cable** () - , .
- Client/Server** (/) - , , .
(, , .)
() .
- DA (data access)** - .
- DNS (Domain Name System)** - DNS
(TCP/IP) . DNS

() IP .
198.63.211.24.

Internet () - , TCP/IP

IP, Internet Protocol () - Internet Protocol,
TCP/IP,

IP IP ,
'xx.xx.xx.xx'.

IP (Internet Protocol) - TCP/IP.

IP , IP .
IP . IP
: 198.63.211.24.

LAN (Local Area Network) -

NIC, Network Interface Card () -

nuBus, .) (, 10baseFL).
(PCI, turbochannel,

OPC (OLE for Process Control) –

OPC Alarms and Events - OPC

OPC Data Access - OPC

OPC DA - . OPC Data Access.

OPC Historical Data Access - OPC

OPC HDA - . OPC Historical Data Access.

PC () - Personal Computer ().

Ports () -

Protocol () -

(Log file) - , (. log) —

2

2.1

Copyright © 1999-2017 AGG Software.
All Rights Reserved

1. Advanced OPC Data Logger -
- 2.
3. Advanced OPC Data Logger ,
- 4.
5. Advanced OPC Data Logger sales@aggsoft.ru
6. Advanced OPC Data Logger , ,
Advanced OPC Data Logger
7. **Advanced OPC Data Logger** "AS IS".
- 8.

9. Advanced OPC Data Logger

10.

Advanced OPC Data Logger
Advanced OPC Data Logger.

2.2

shareware-

5

- 21
-

2.3

shareware-

4

Internet,

2.4

Advanced OPC Data Logger	support@aggsoft.ru
	support@aggsoft.ru
	sales@aggsoft.ru

3

3.1

- Windows 2000 SP 4 - Windows 10 (x86 x64,).

3.2

Advanced OPC Data Logger.

, Advanced OPC Data Logger "Programs Files\Advanced OPC Data Logger"

Advanced OPC Data Logger

4

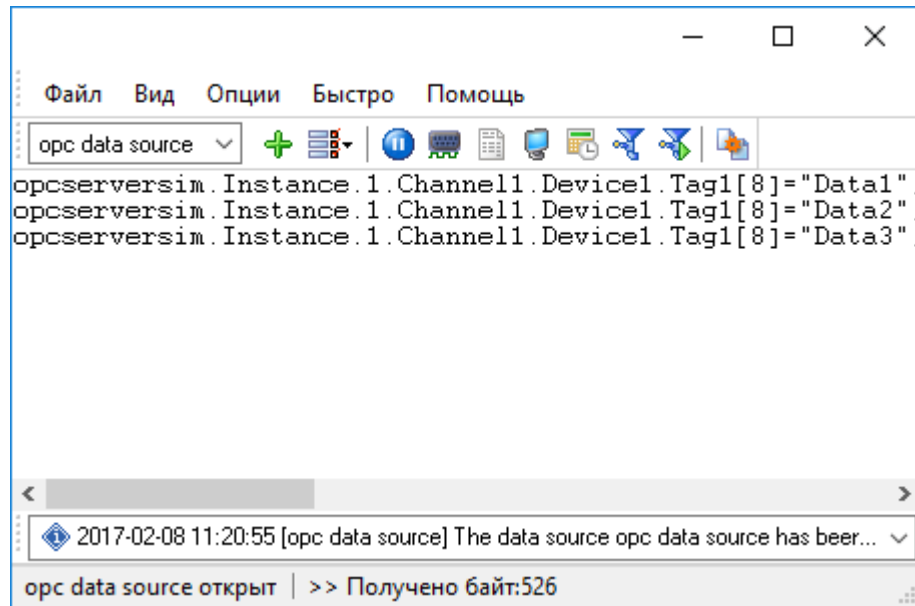
4.1

Advanced OPC Data Logger

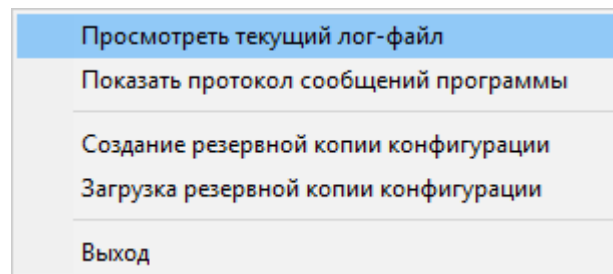
Advanced OPC Data Logger " ".

(. 1.1.1),

1.1.2) (" ..."), " ("



. 1.1.1.



. 1.1.2.

C:\. ,

1-2-3-4

1.

" " [11] OPC " OPC"

2. ()

" " ()

3. [33]

" " , , ,

4. Advanced OPC Data Logger ,

Advanced OPC Data Logger , ,

4.2

, - ,

[27]

[30]

(. 1.1.1 [6]).

" [23]"

Advanced OPC Data Logger

[37]

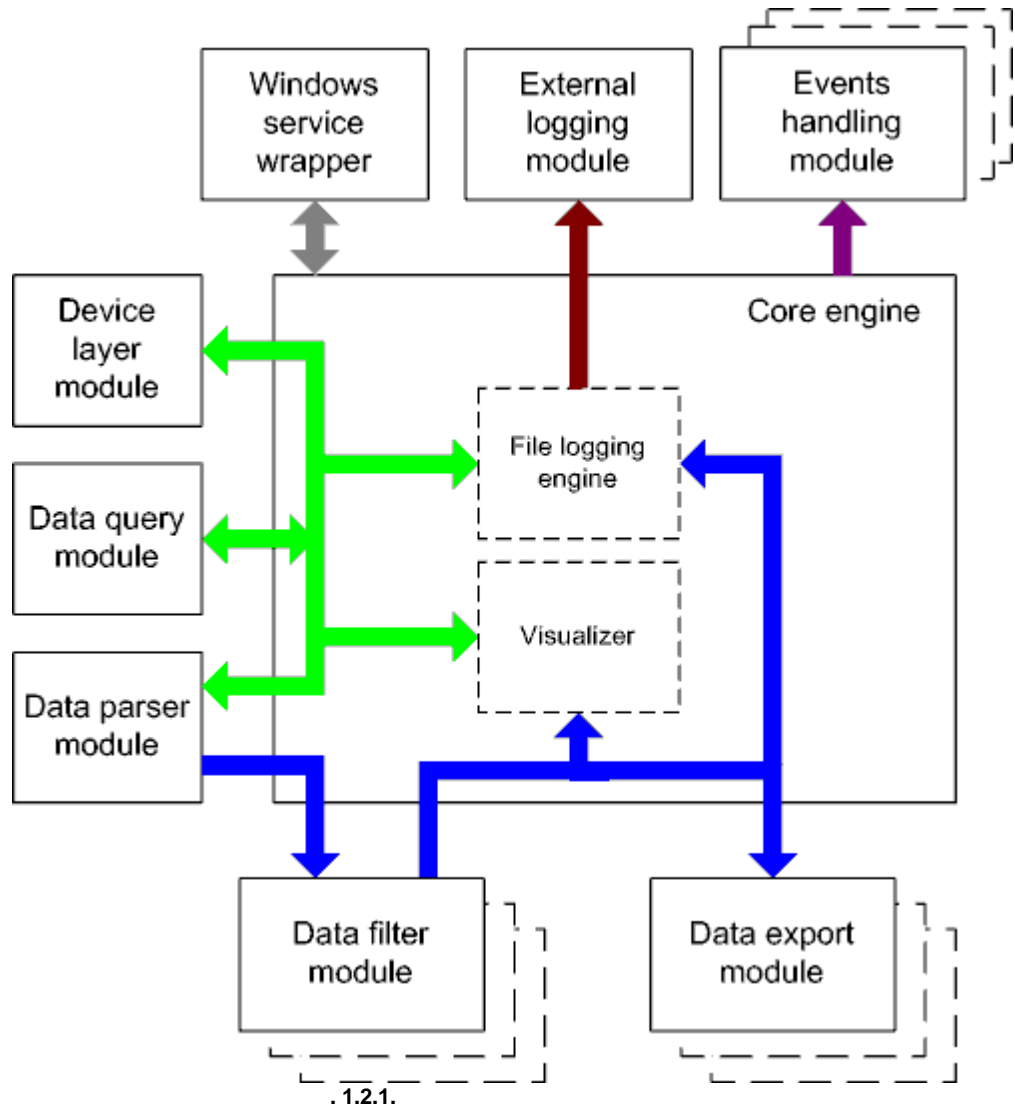
Advanced OPC Data Logger

Advanced OPC Data Logger.

[33] (plug-ins),

" [33]"

4.3



■ - ().

- Core engine -
- Device layer module -
- Data query module -
- Data parser module -
- Data filter module -
- Data export module -
- Visualizer -
- File logging engine -
- Windows service wrapper -
- External logging module -
- Events handling module -

4.4

Windows.

4.5

- 1.
- 2.

1. " " " " ,
2. regedit.exe : Windows.
 Windows x64
 HKEY_LOCAL_MACHINE\SOFTWARE\Wow6432Node\AGG Software\Advanced OPC Data
 Logger
 Windows x32
 HKEY_LOCAL_MACHINE\SOFTWARE\AGG Software\Advanced OPC Data Logger

```

3.      "      "
      :
      Ctrl+S -      "      /      "      ;
      Ctrl+D -      "      /      "      ;
      Ctrl+P -      "      /      "      ;
      Ctrl+L -      log-      ;
      Ctrl+R -      ;
      Ctrl+E -      Windows;
      Ctrl+M -      ,

```

```

4.      ,
      . : -

```

```

5.      INI
      "      "

```

```

6.      10
      : -

```

5

5.1 OPC

5.1.1 OPC

```

      ,
      .
      OPC.
      OPC
      , OPC
      OPC
      :
1.      "
      ,
      (
      ),
      "
      "      NULL      "
      :
      NULL

```

2.

NULL
NULL
\$00..\$1F,
"\" , ""
"\\", "\\",
"x".

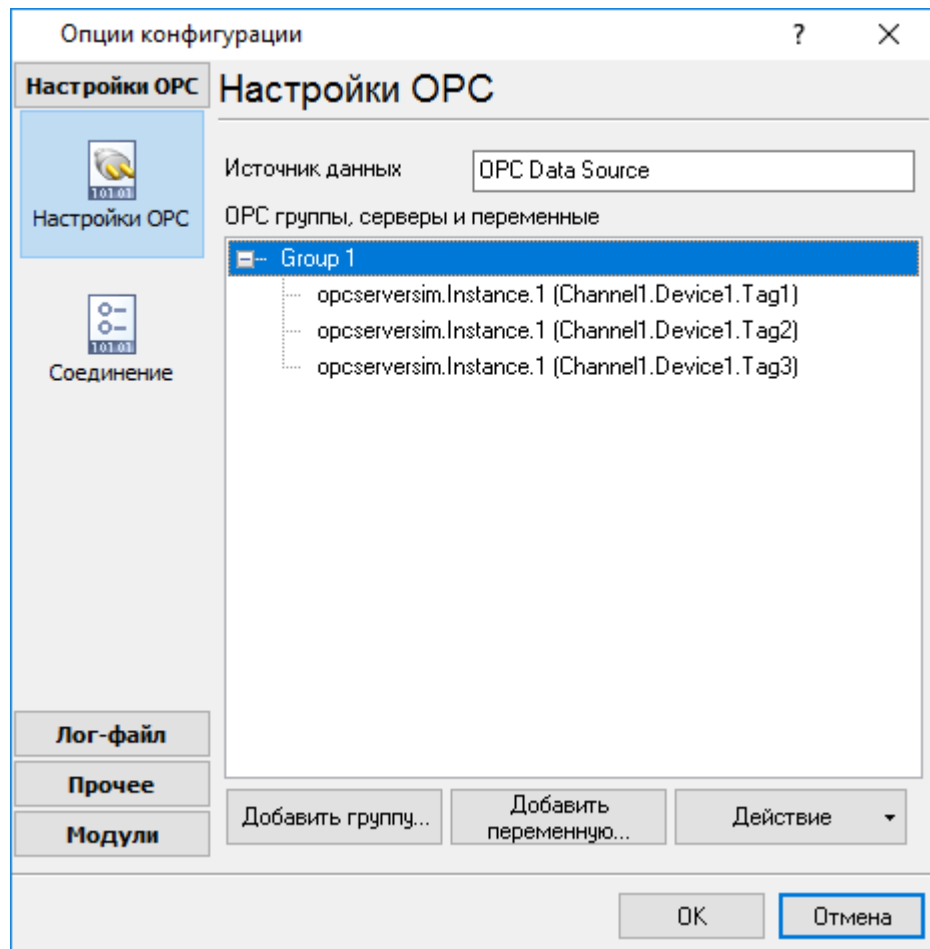
OPC

- 1.
- 2.
- 3.
- 4.

"CR" "CR+LF";
"integer",
"double".

5.

"OPC
/ "OPC"
OPC"

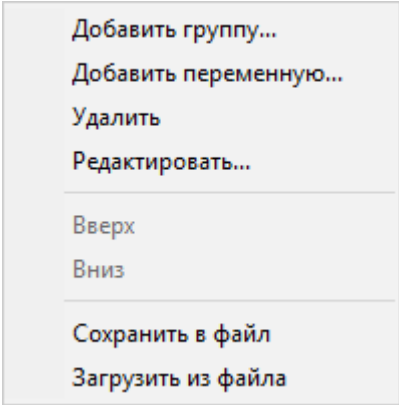


. 2.4.1. OPC

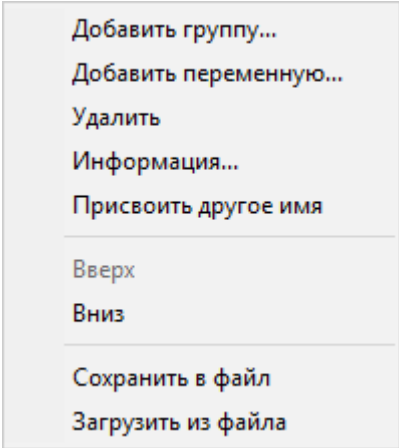
OPC

OPC

OPC



. 2.4.2.



. 2.4.3.

" - " " " "OPC",
" (. 2.4.2 . 2.4.3).
" ...",
(. 2.4.4).

Свойства группы X

Имя

Частота обновления (мс) Мертвая зона (%)

Активно Экспорт только достоверных данных

Ожидать обновления всех переменных Экспорт метки даты/времени

Добавлять имя сервера к имени переменной Метки времени в локальном времени

Экспортировать всю группу Экспорт качества переменной

Экспорт всех изменившихся переменных одной строкой Экспорт имени переменной

Экспорт за фикс. интервал Не экспортировать NULL значения

Экспорт в

Использовать период обновления

Время суток

Время в формате планировщика Unix Cron

ДН М Д

Ч МИН СЕК

. 2.4.4.

XXX, XXX -

() -

OPC

, . . . 1

- 1000

(%)-

- 0

(

),

(

).

" " " " NULL "),"

,"

OPC_QUALITY_GOOD,

UTC+0. OPC OPC OPC

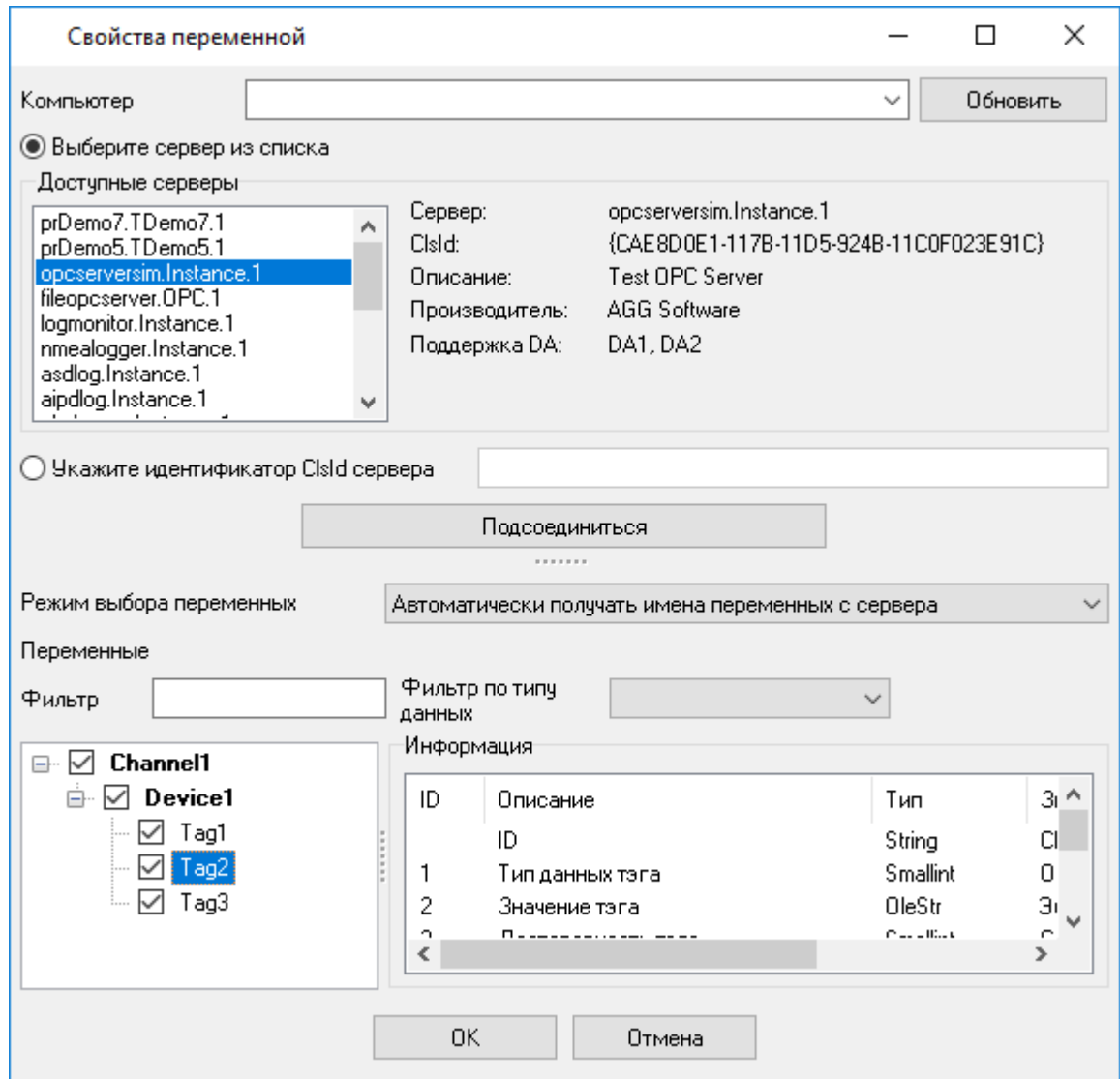
ITEM_NAME[8]="opcserver sim.Instance.1.T1";ITEM_VALUE[3]=1606521099;ITEM_QUALITY[3]=192
ITEM_NAME[8]="opcserver sim.Instance.1.T2";ITEM_VALUE[3]=1170485188;ITEM_QUALITY[3]=192
ITEM_NAME[8]="opcserver sim.Instance.1.Val1";ITEM_VALUE[5]=4958.32440443337;ITEM_QUALITY[3]=192
ITEM_NAME[8]="opcserver sim.Instance.1.Val2";ITEM_VALUE[5]=4970.36790242419;ITEM_QUALITY[3]=192

NULL

"OK"

" OPC "

(. 2.4.5).



. 2.4.5.

OPC

OPC

()

DA -

DA.

- 1.
- 2.

(. 2.4.1)

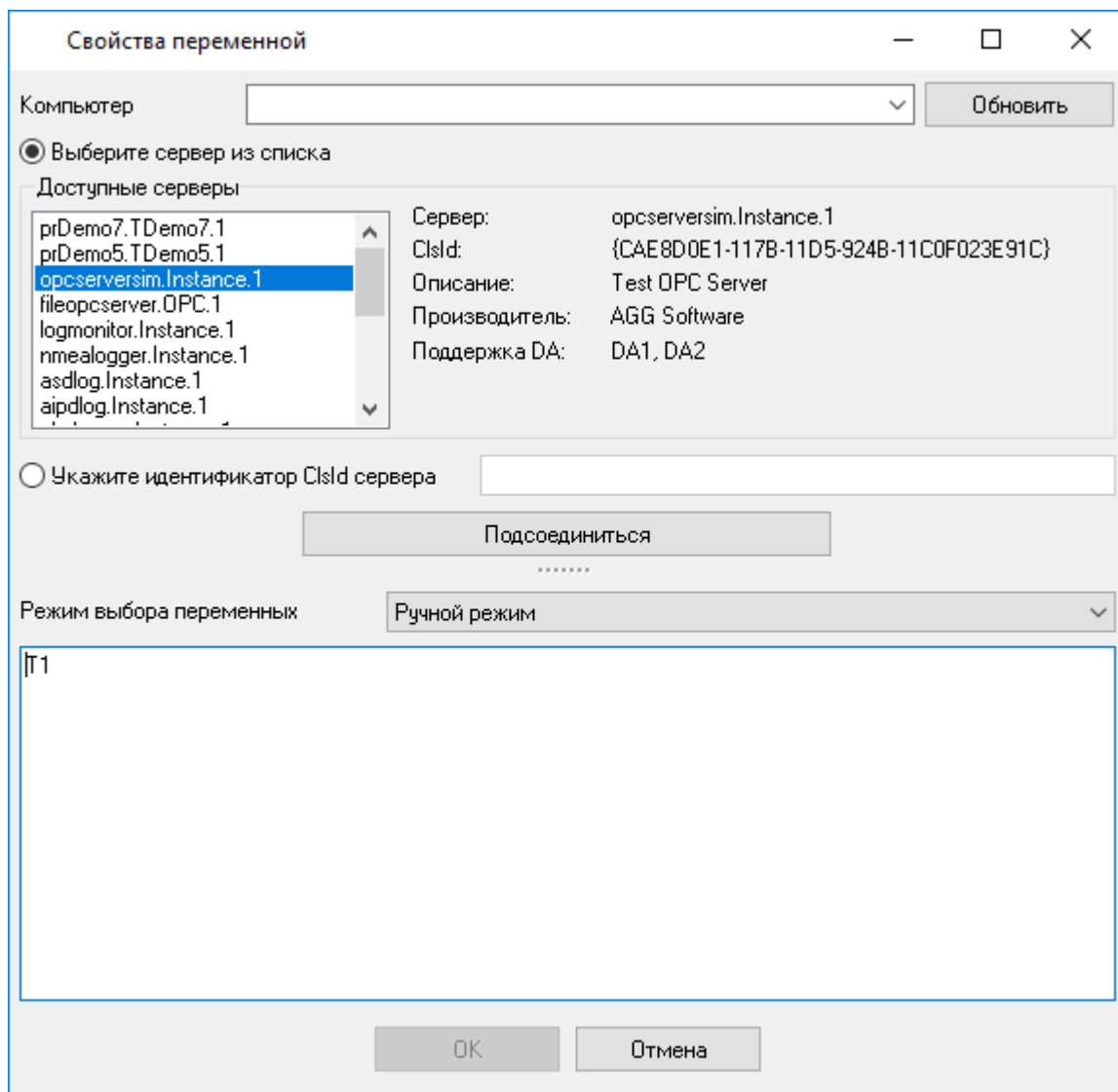
"OK"

(. 2.4.6),

- Выбрать все
- Очистить все
- Инvertировать выбор

- Скопировать выбранные переменные для ручного редактирования

. 2.4.6.



. 2.4.7.

"OPC"

"OPC ...";
 (. 2.4.4).
 "OK"
 "11"

"OPC ...";
 "OK"
 1: /

"OPC ...";
 2:

"OPC " "

5.1.2 "Cron"

Cron- Unix) cron-
 :
 < > < > < > < > < >
 * ()
 , " " - ?
 (, 1,3,7)
 (, 1-5).
 (*)
 , 0-23/2
 (0,2,4,6,8,10,12,14,16,18,20,22).
 * /4 " " 1,4,7,10,13,16,19,22,25,28.
 " " " "
 (Jan, Feb, ... , Dec) (Mon, Tue, ... ,
 Sun)
 : < >

* * * * *	
59 23 31 12 5	,
59 23 31 Dec Fri	- (,)
45 17 7 6 *	7- 17:45
0,15,30,45 0,6,12,18 1,15,31 * 1-5 *	00:00, 00:15, 00:30, 00:45, 06:00, 06:15, 06:30, 06:45, 12:00, 12:15, 12:30, 12:45, 18:00, 18:15, 18:30, 18:45, 1- , 15- 31-

*/15 */6 1,15,31 * 1-5	00:00, 00:15, 00:30, 00:45, 06:00, 06:15, 06:30, 06:45, 12:00, 12:15, 12:30, 12:45, 18:00, 18:15, 18:30, 18:45, 1- , 15- 31-
0 12 * * 1-5 (0 12 * * Mon-Fri)	()
* * * 1,3,5,7,9,11 *	, , , ,
1,2,3,5,20-25,30-35,59 23 31 12 *	23:01, 23:02, 23:03, 23:05, 23:20, 23:21, 23:22, 23:23, 23:24, 23:25, 23:30, 23:31, 23:32, 23:33, 23:34, 23:35, 23:59
0 9 1-7 * 1	, 9
0 0 1 * *	, ,
* 0-11 * *	
* * * 1,2,3 *	,
* * * Jan, Feb, Mar *	,
0 0 * * *	
0 0 * * 3	

cron-

"?".

:

,

?

?? * * *

" (" , ,) - , 8:25,

:

25 8 * * * *

:

- ? * * * * * - - - ;
- ? * * * * * - (, 10:15)
- * * * * * - : 11:15, 12:15, 13:15 . . ;
- * * * * * - ;
- */15 ? * * * * - (,)

.

5.2

5.2.1

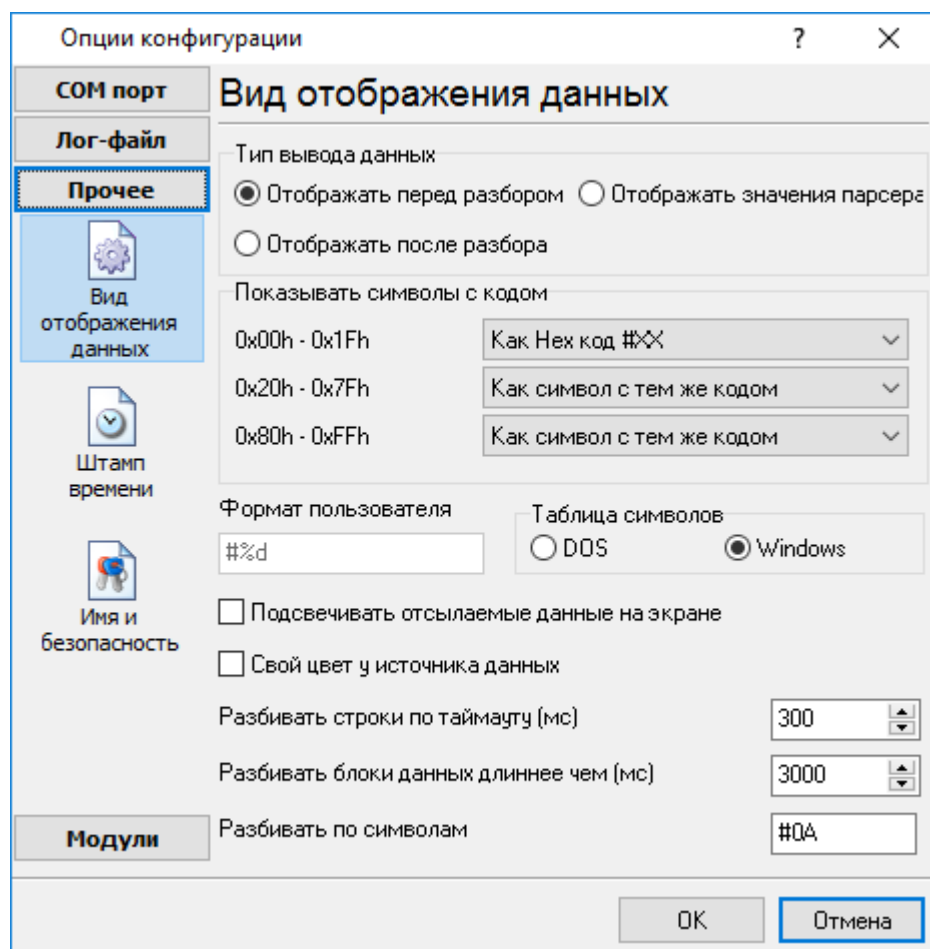
(. 1.1.1⁶)

2

(. 3.1.1):

1.

2.



. 3.1.1.

"

-

" (. 3.1.1)

:

Hex-

%d

, %x -

(OEM).

: Windows DOS

0,

0,

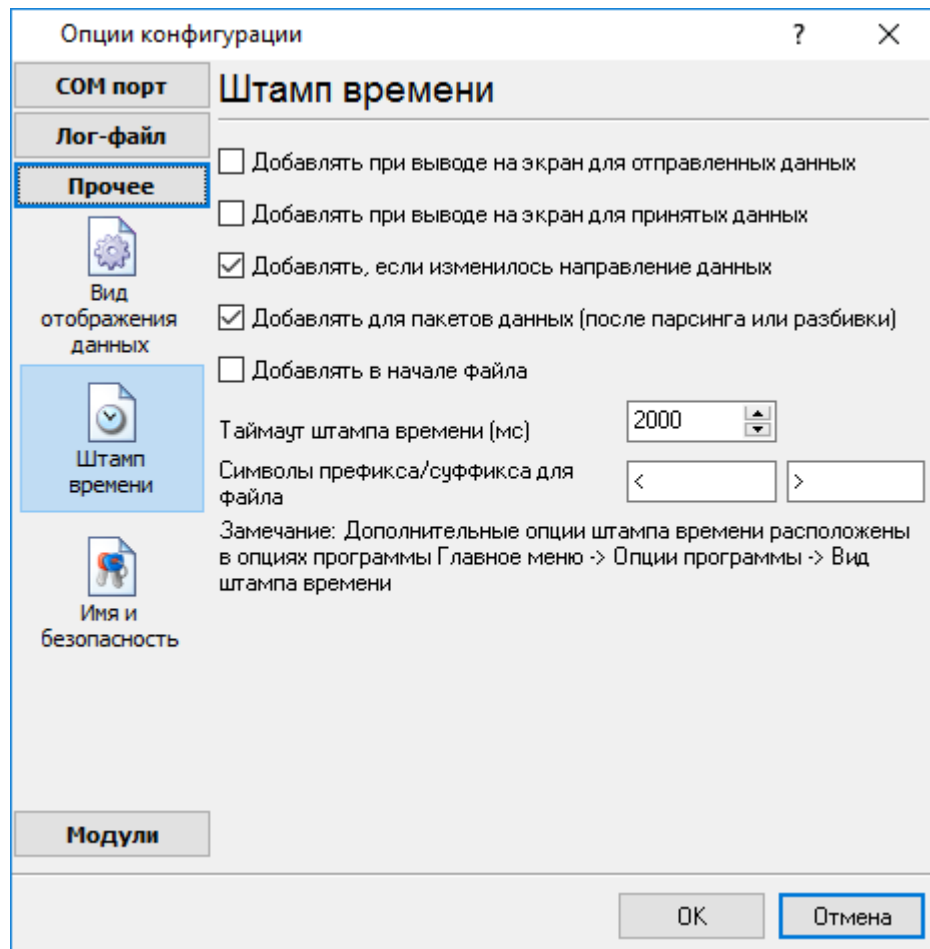
. 3.1.1

5.2.2

(. 3.2.1)

()

39



. 3.2.1.

:>#0D#0A

5.2.3

(. 3.3.1)

:

-

.

-

,

"

"

45

"

/

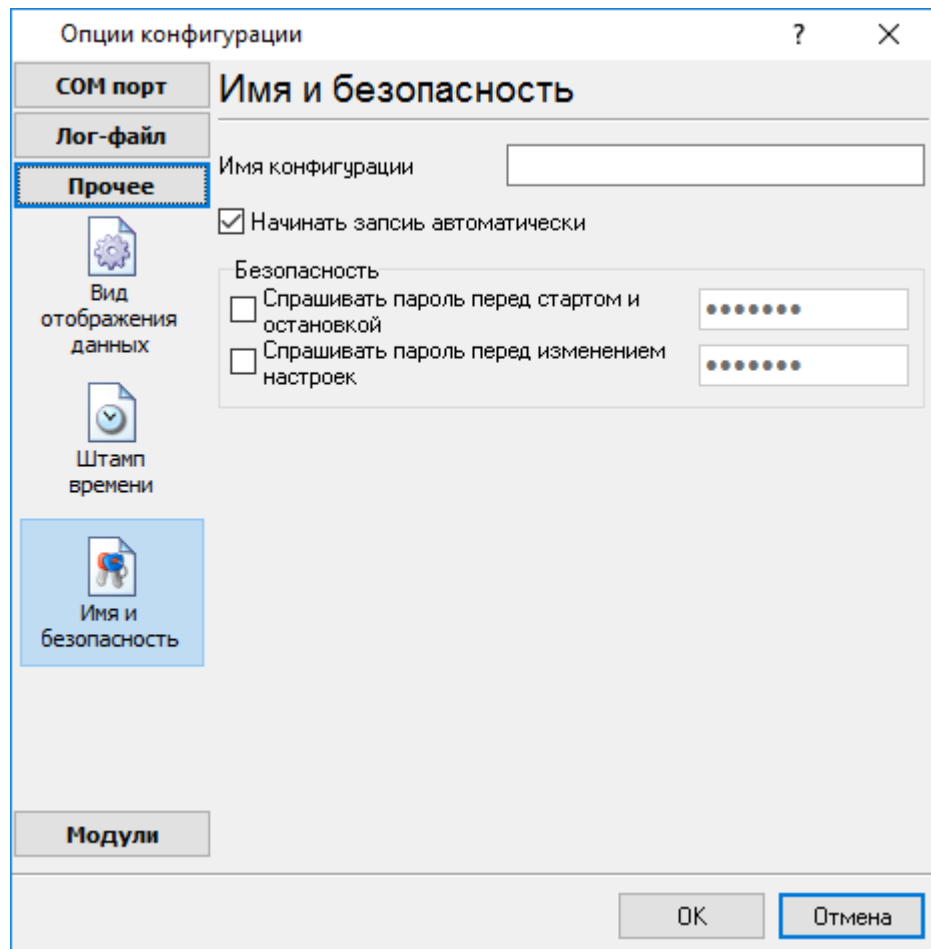
"

-

,

-

,

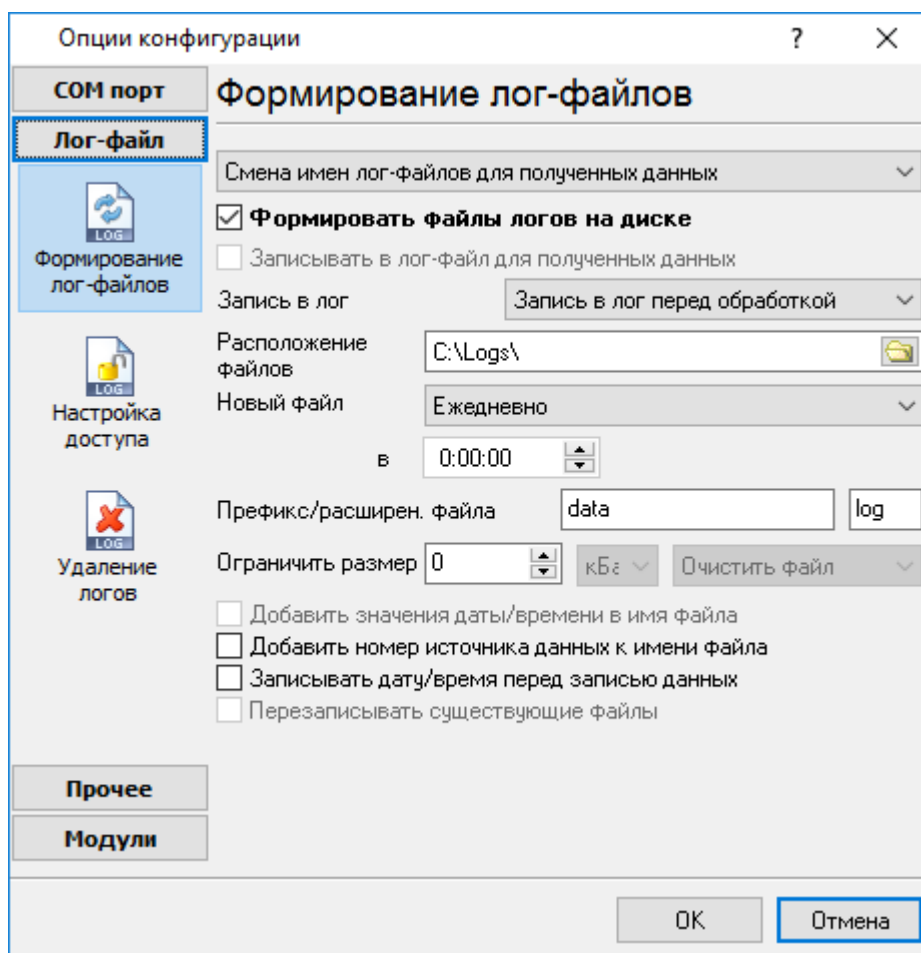


. 3.3.1.

5.3

5.3.1

(. 4.1.1).



. 4.1.1.

Advanced OPC Data Logger

```

"sampleYYYYMMDD.log". 21-
2003 - "sample20030321.log".
.
( ).
, , , .
" " :
1. - , .
DDMMYYYY, DD - , MM -
YYYY - ;
2. - . MMYYYY;
3. - YYYYMMDD;
4. -
sample00000001.log. -
;
5. - ;
6. - WWYYYY, WW -
, YYYY -
;
7. - ,
;
8. - HHDDMMYYYY;
9. - -
, .
:
d - , (1 - 31);
dd - , (01 - 31);
ddd - ( - ) ,
;
dddd - ( - )
;
m - , (1 - 12);
mm - , (01 - 12);
mmm - ( - ) ,
;
mmmm - ( - ) ,
;
yy - (00 - 99);
yyyy - (0000 - 9999);

```



```

h - , (0 - 23);
hh - , (00 - 23);
n - , (0 - 59);
nn - , (00 - 59);
s - , (0 - 59);
ss - , (00-59).

```

```

: "sample_log", "txt".
: = sample_log_, = txt ( !).
HHDDMMYYYY.

```

4 7 /

sample20030321.log.

/

, COM1-

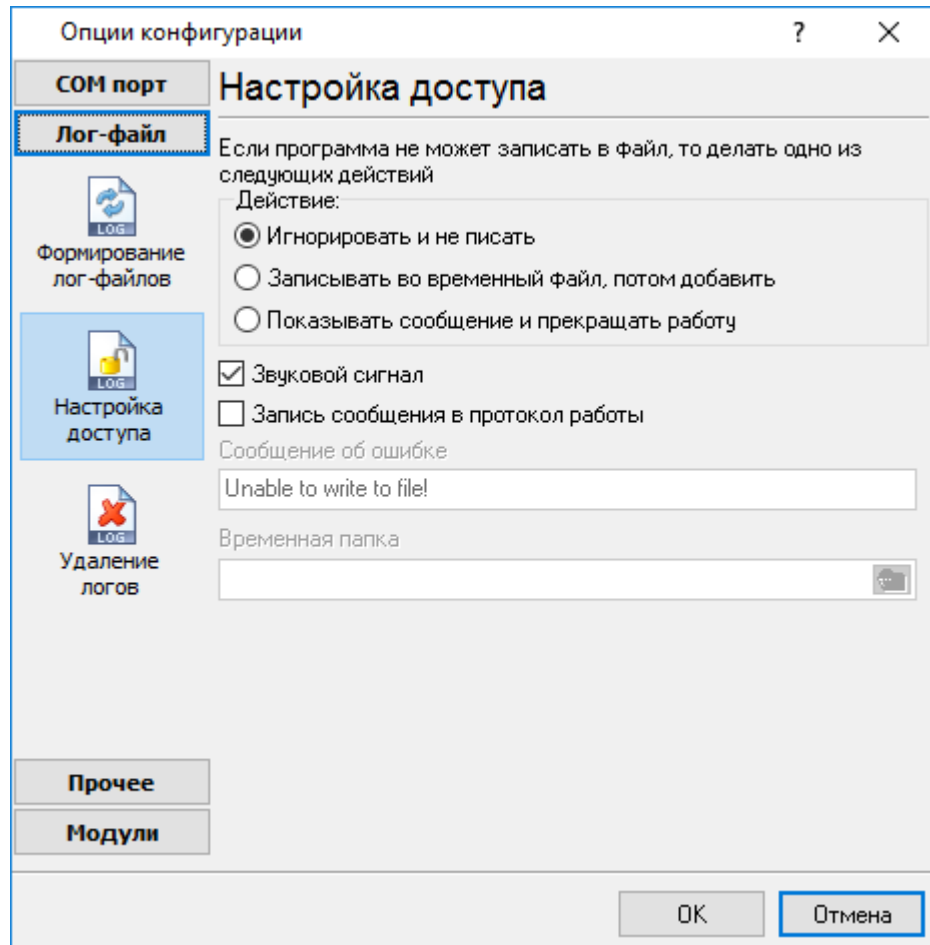
4 7.

- 1. "
- 2. !
- 3. () -
- 4. ().

5.3.2

Office (, Microsoft Word),
 OPC Data Logger

Microsoft
 Advanced



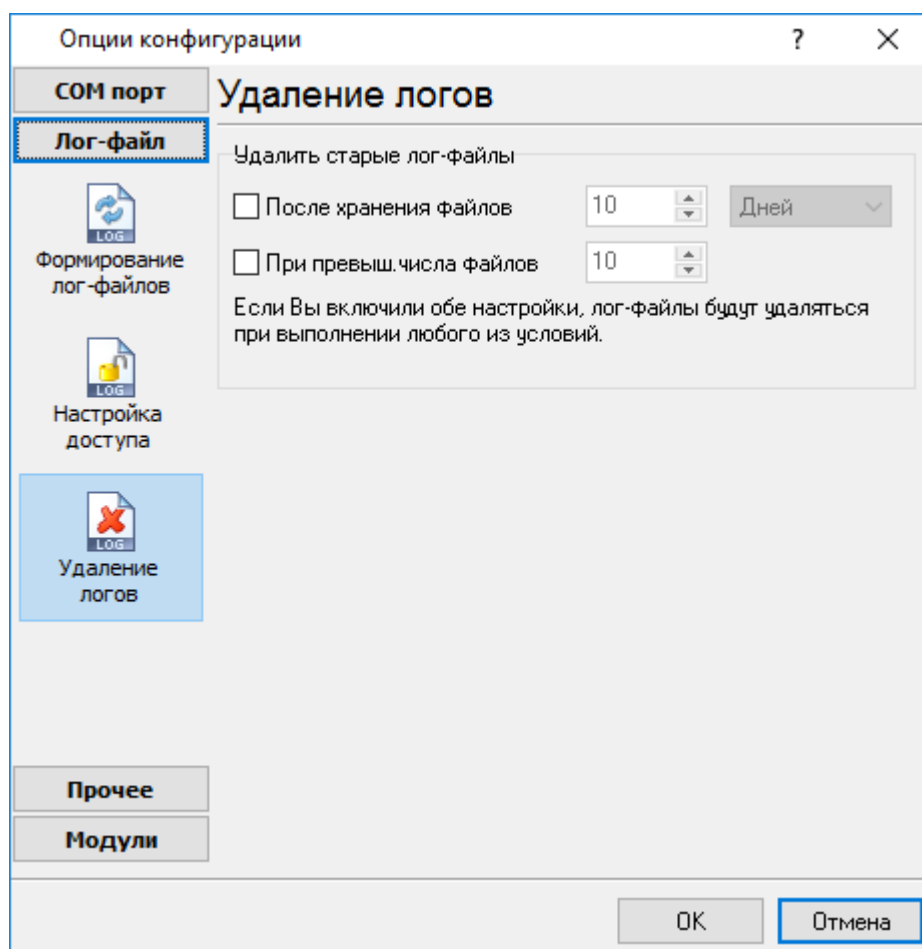
. 4.2.1.

Advanced OPC Data Logger
(. 4.2.1),

-
-
-

5.3.3

(рис. 4.3.1).



. 4.3.1.

5.3.4

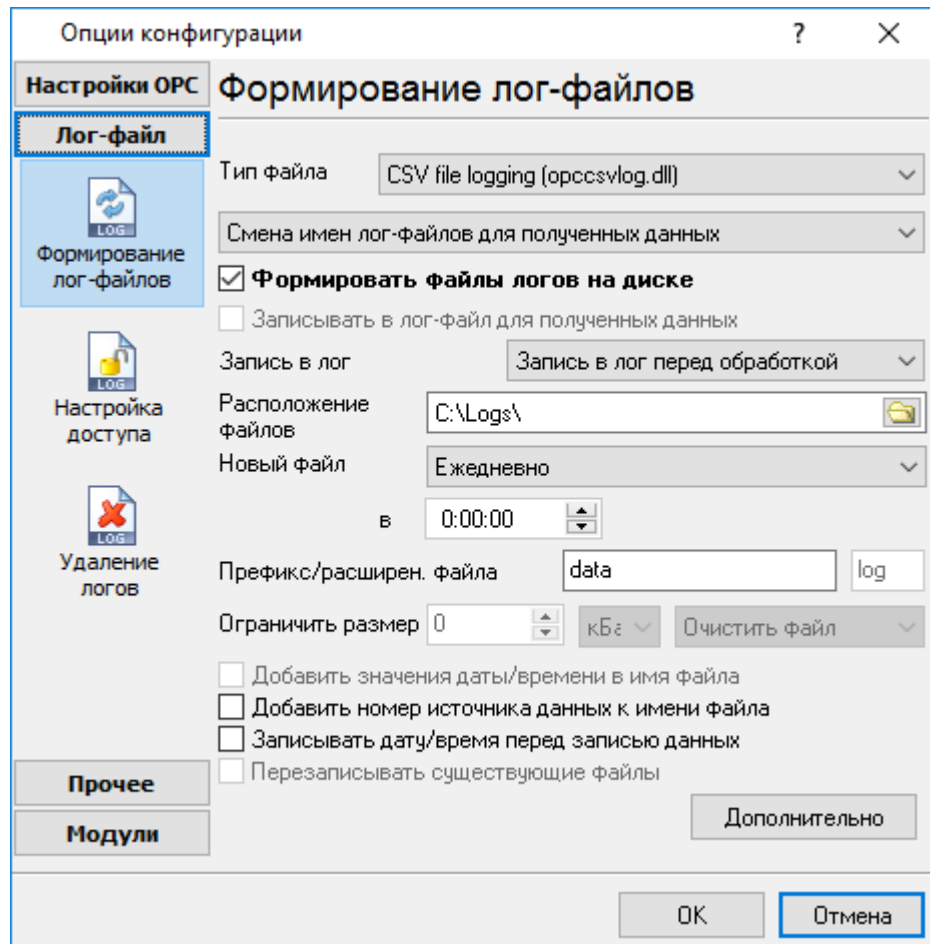
CSV -

CSV,
Excel-

CSV

CSV

OPC [11]



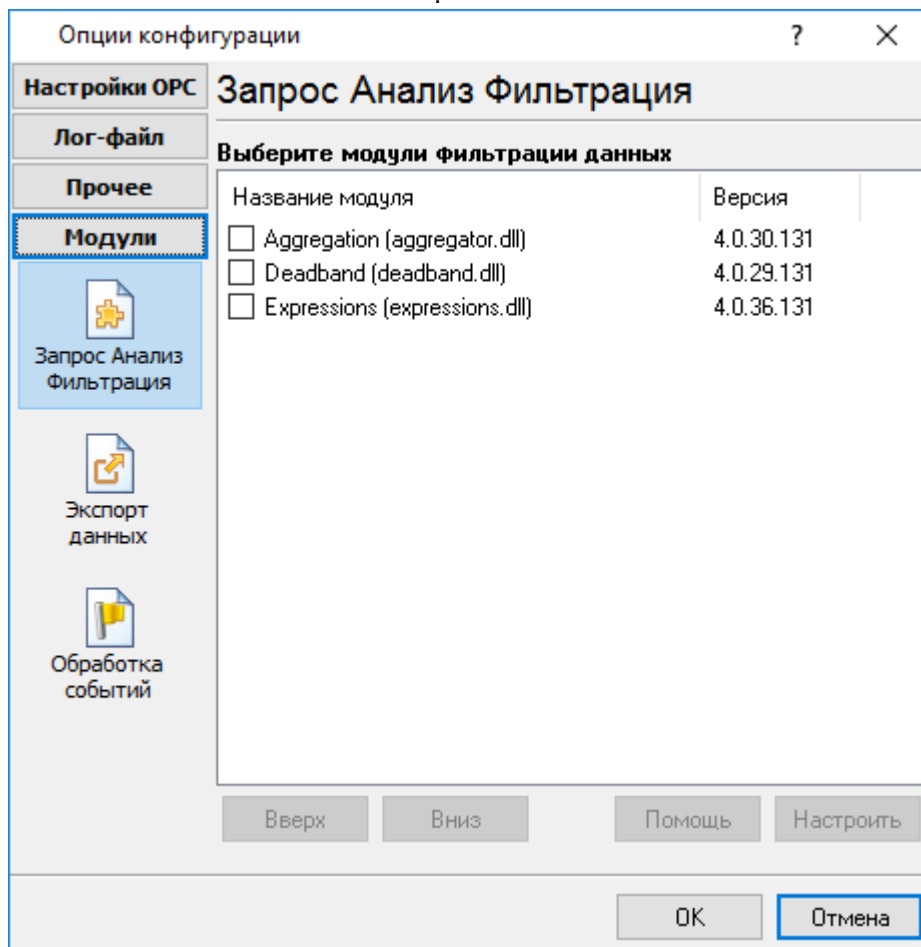
. 4.4.1 CSV

5.4

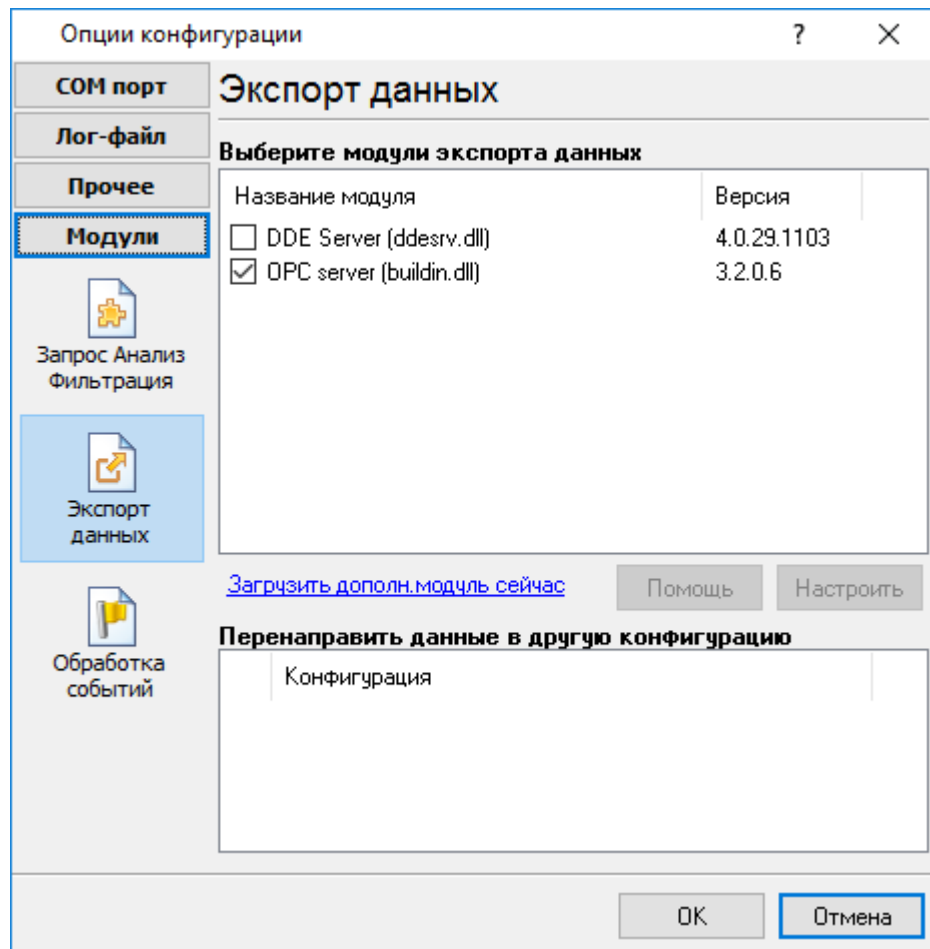
5.4.1

Advanced OPC Data Logger :

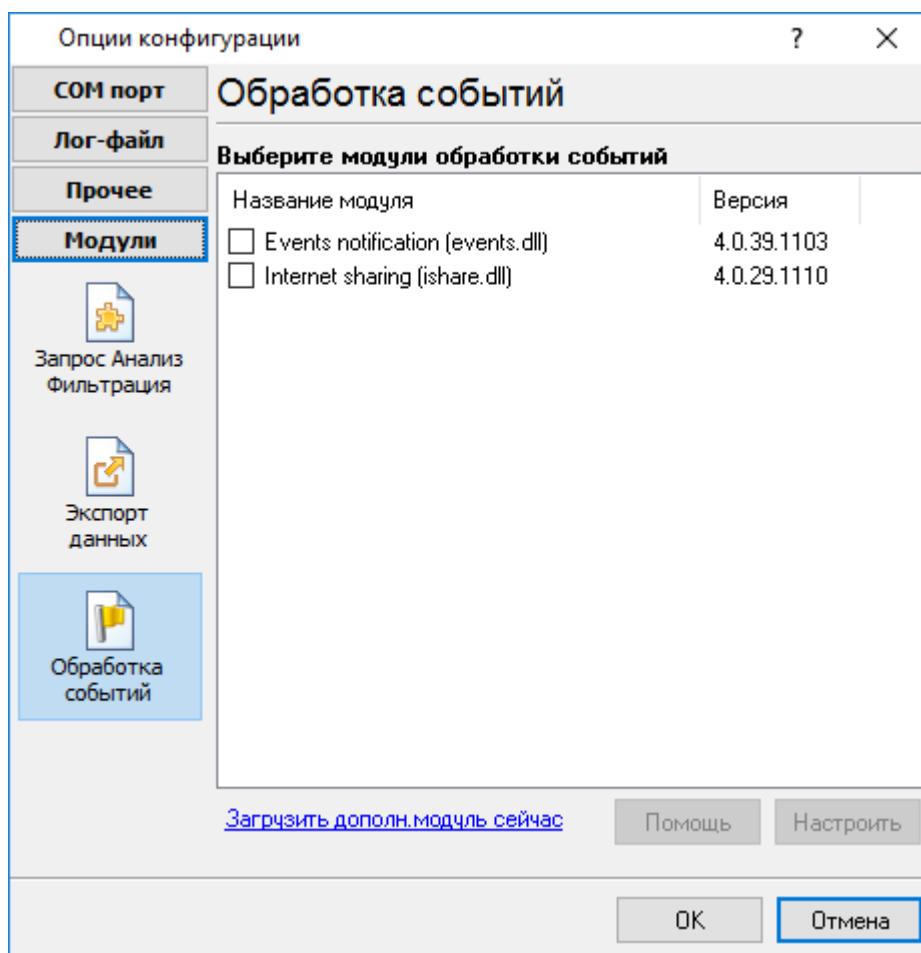
- - ;
- - , Excel ;
- (. 5.1.3) - Advanced OPC Data Logger. , " - " "



. 5.1.1.



. 5.1.2.

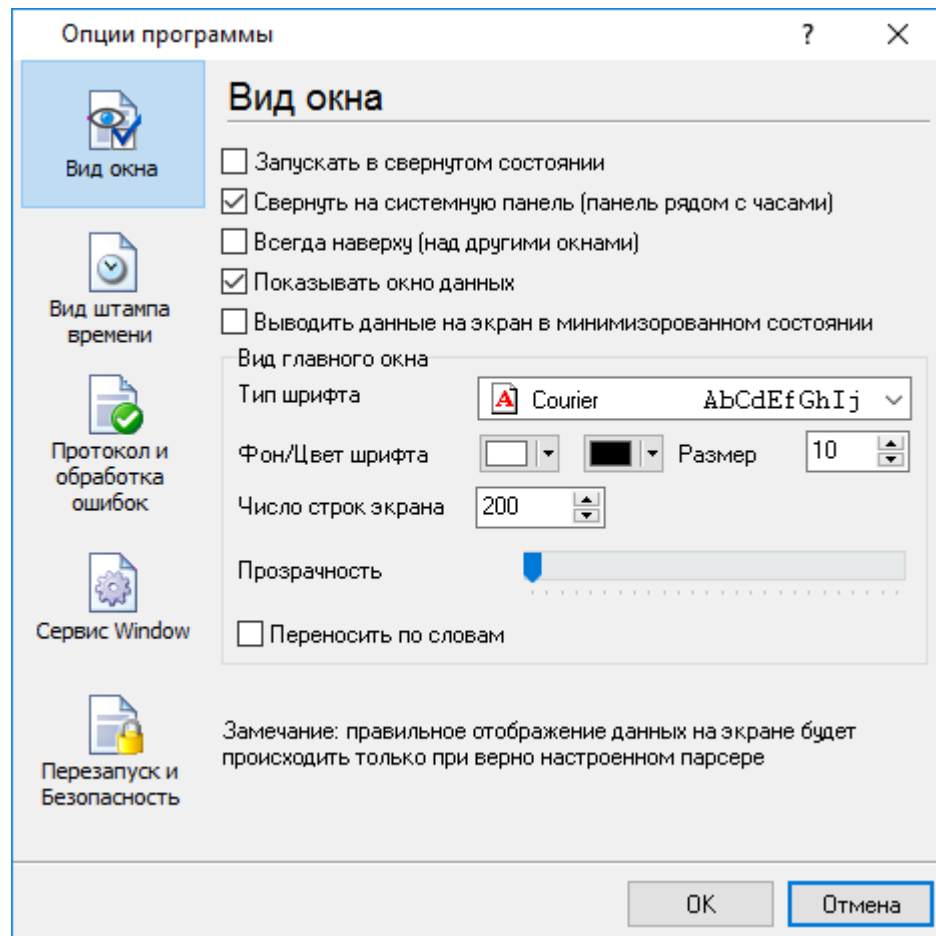


. 5.1.3.

"OK".

5.5

5.5.1

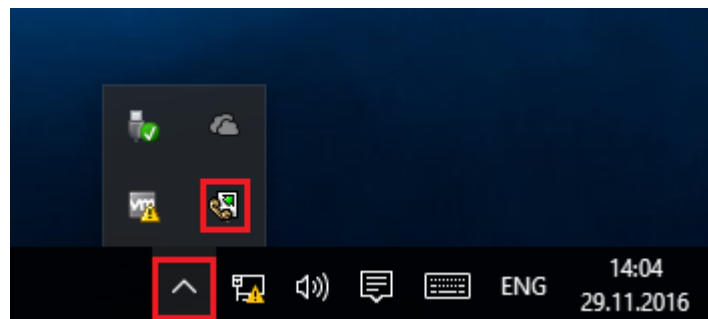


. 6.1.1.

" (. 6.1.1) :

- Advanced OPC Data Logger

(. 6.1.2) ;



. 6.1.2.

-

(. 6.1.2) -

Advanced OPC Data Logger

;

-

;

- /

.

.

-

,

;

);

-

;

- Windows 2000

.

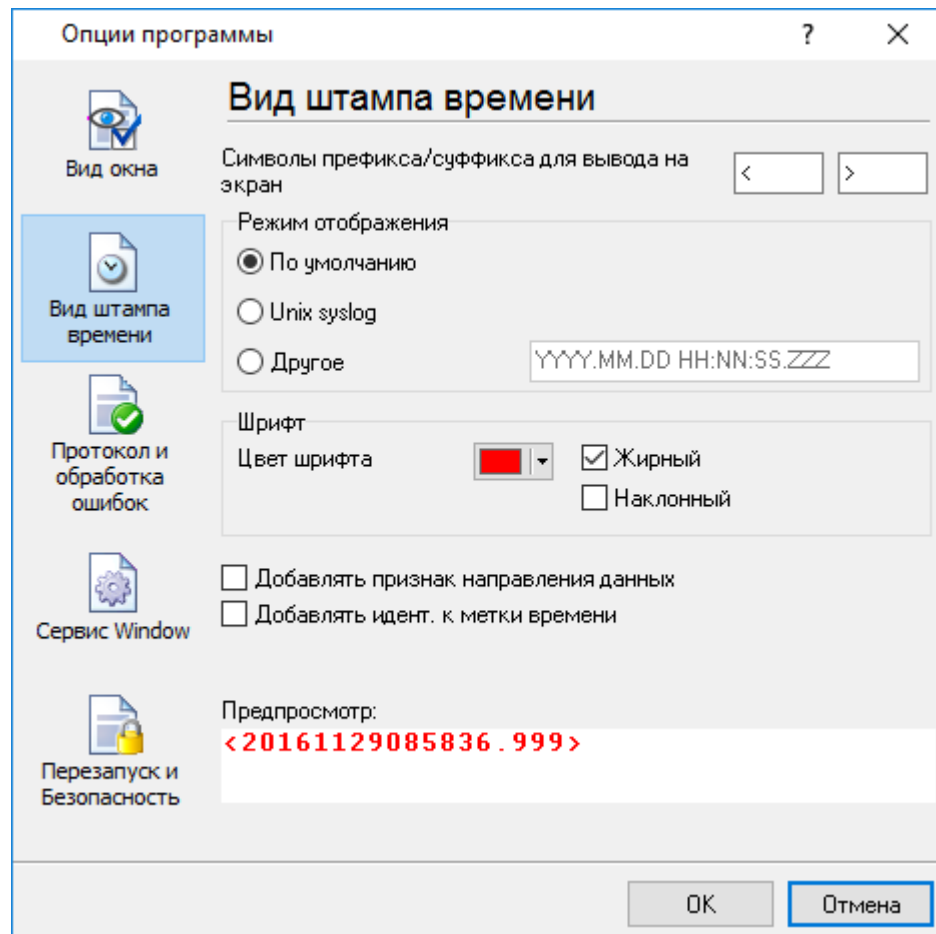
-

,

.

5.5.2

(. 6.2.1)



. 6.2.1.

/

24

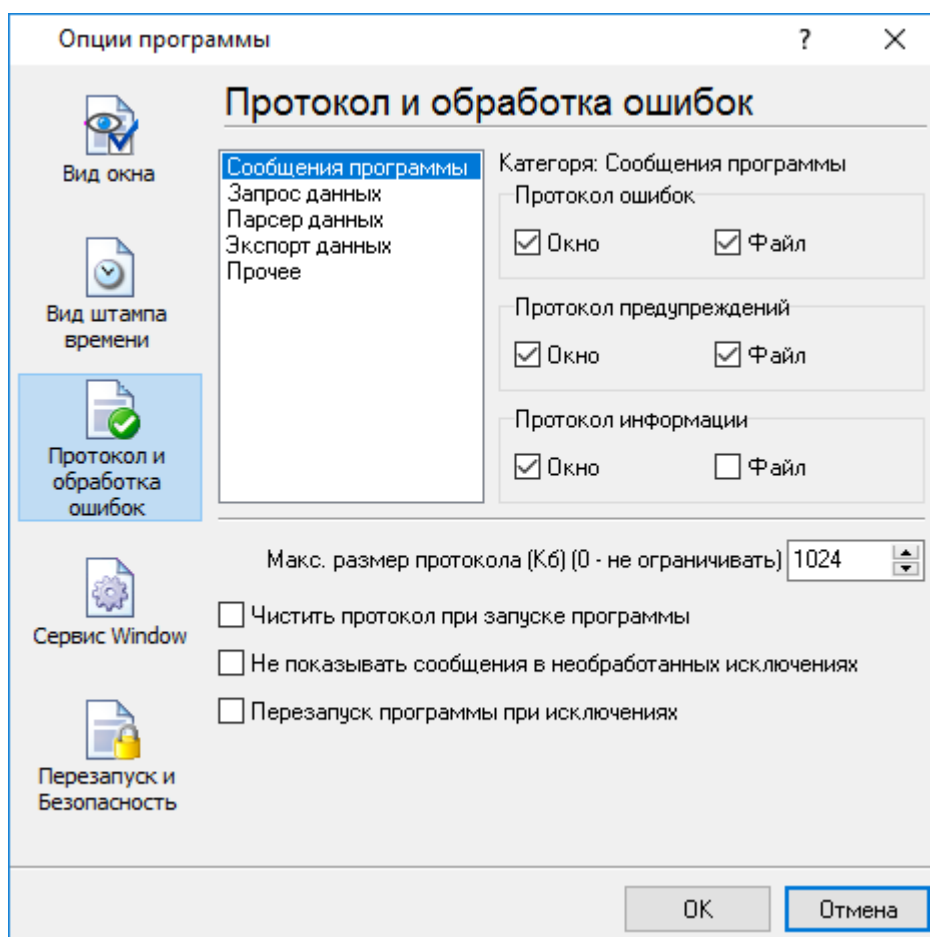
TX

RX

, COM1.

5.5.3

(). " " (. 6.3.1).
 .log.



. 6.3.1.

Advanced OPC Data Logger

3-

- ;
- - ;
- - ;

-
-
-
-

Advanced OPC Data Logger

5.5.4
5.5.4.1

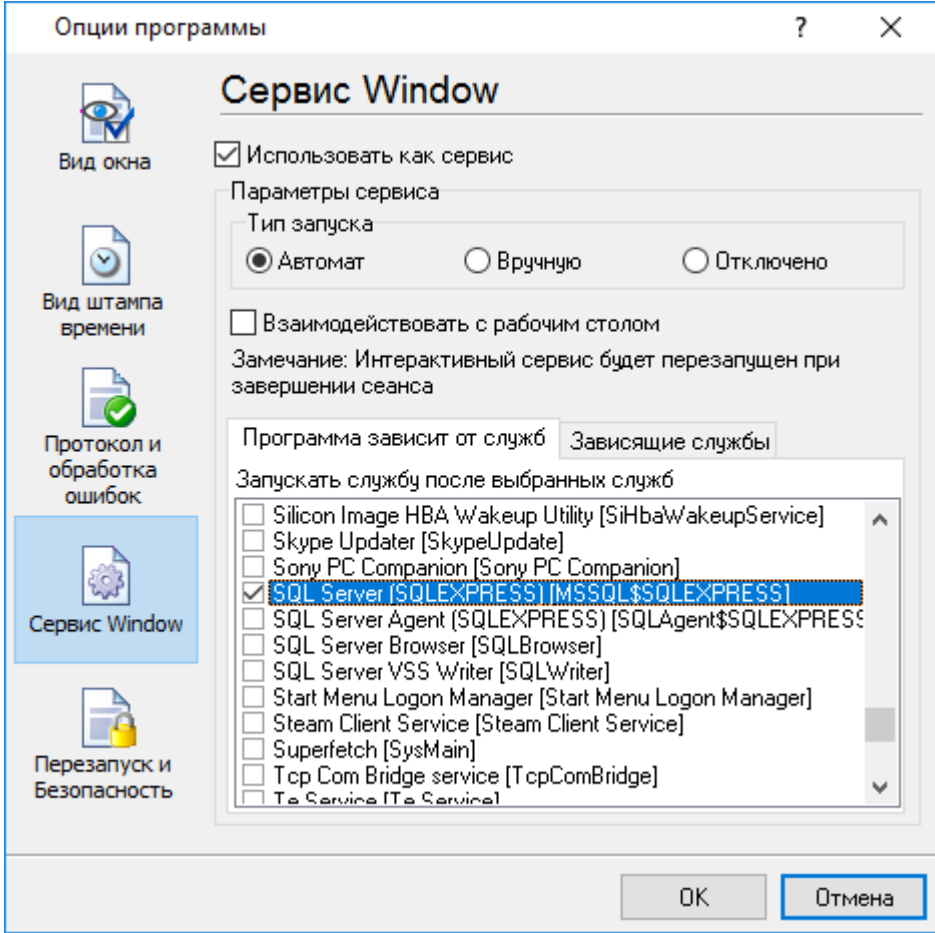
Windows 2000

() Windows :

- 2000);
- - ();
- ;
-

Windows Vista
(elevated)

Windows" (. 6.4.1).



. 6.4.1.

1. - Windows
2. - ; " " ;
3. - .

" .
 (. 6.4.2).
 ", . . Windows

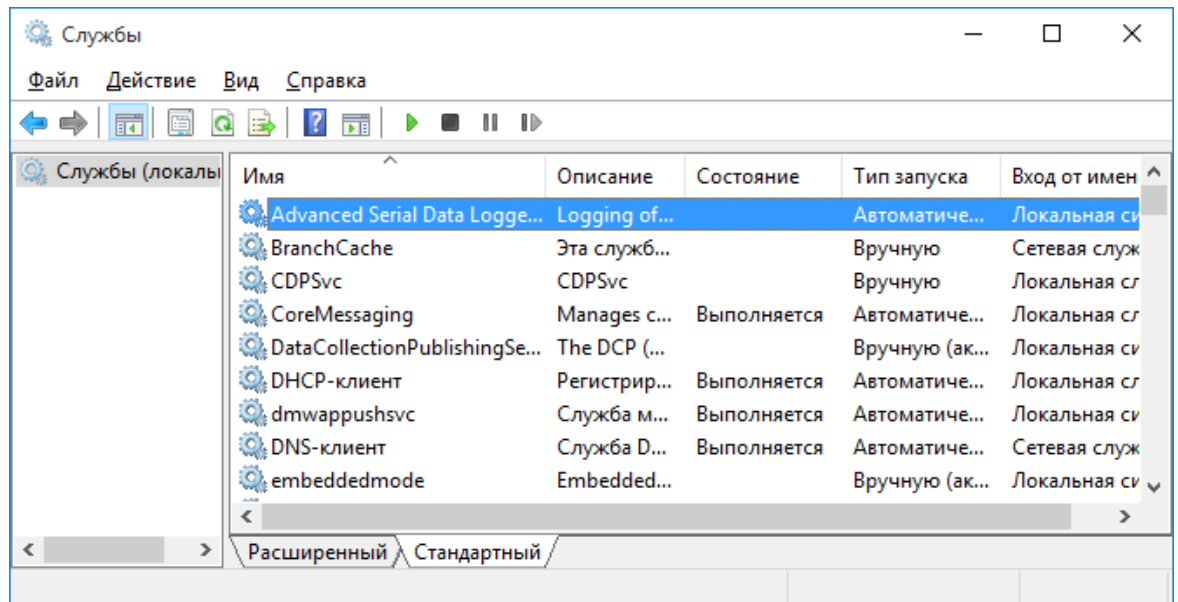
: _____ 44 Windows Vista .



. 6.4.2

Advanced OPC Data Logger, " (. 6.4.1)

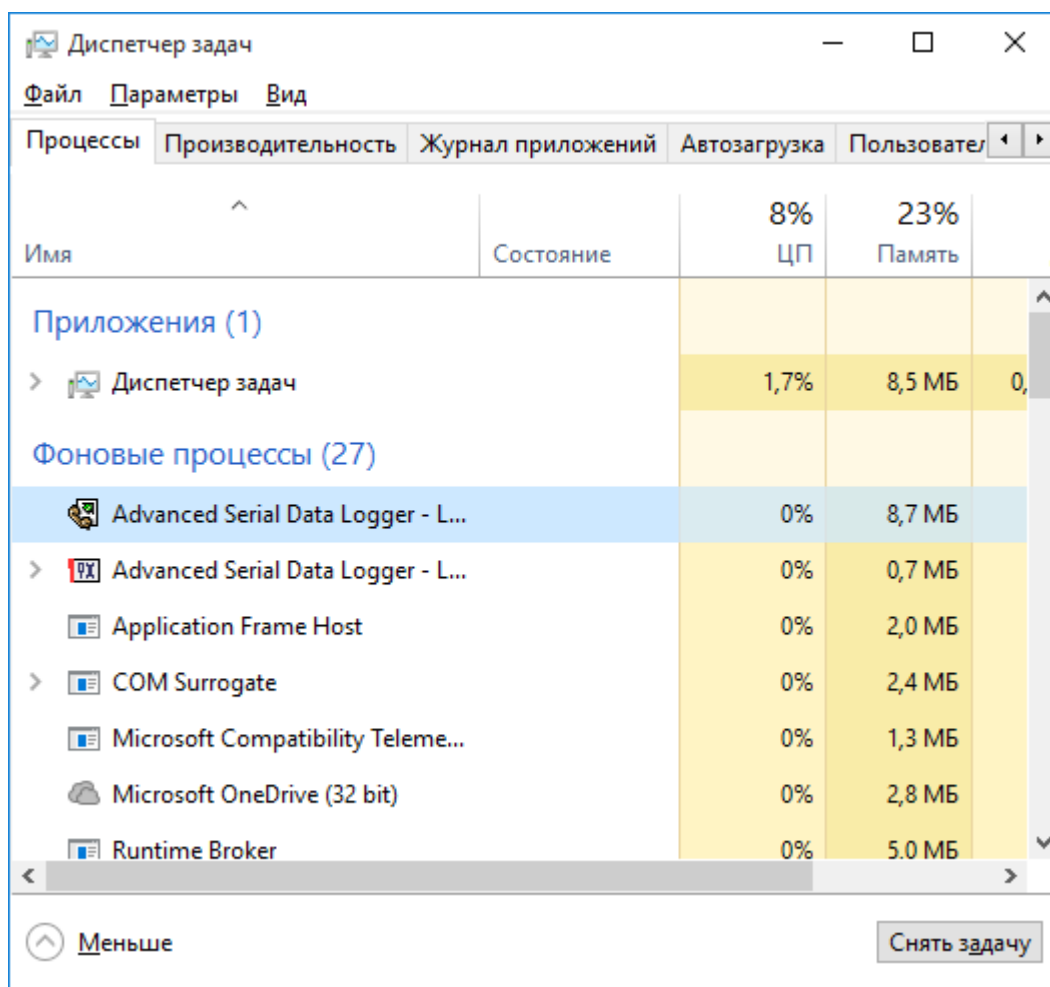
" " (. 6.4.3).



. 6.4.3.

(Windows 2000)

opclogger.exe (. 6.4.4). 2 - opcloggersrv.exe
Advanced OPC Data Logger
Advanced OPC Data Logger,
svany.exe



. 6.4.4.

opcloggersrv.exe :

- /? - ;
- /I - ;
- /A - ;
- /D - ;
- /R -

5.5.4.2

Windows Vista

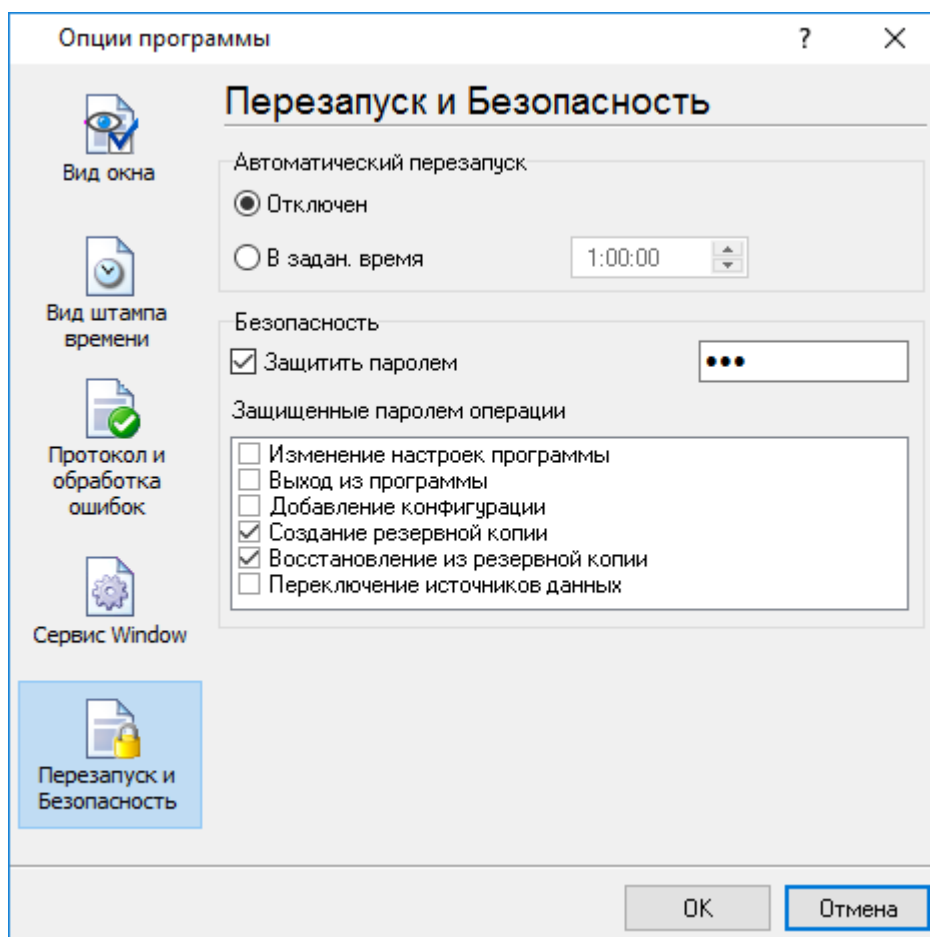
Windows Vista

Windows.

- : Interactive Services Detection
 - : UIODetect
 - : UIODetect.exe
 - :
 - : %windir%\system32\UIODetect.exe
 - :
- * Home Basic:
* Home Premium:
* Business:
* Enterprise:
* Ultimate:

5.5.5

(. 6.5.1).



. 6.5.1.

" "

6

?

6.1

SoftIce

support@aggsoft.ru