



"InfluxDB HTTP Export"

1		1
2		1
3	InfluxDB HTTP Export	2
4		3
5		3
1	3
2	4
3	HTTP POST	6
4	HTTP GET	7
5	7
6	?	9
1	9

1

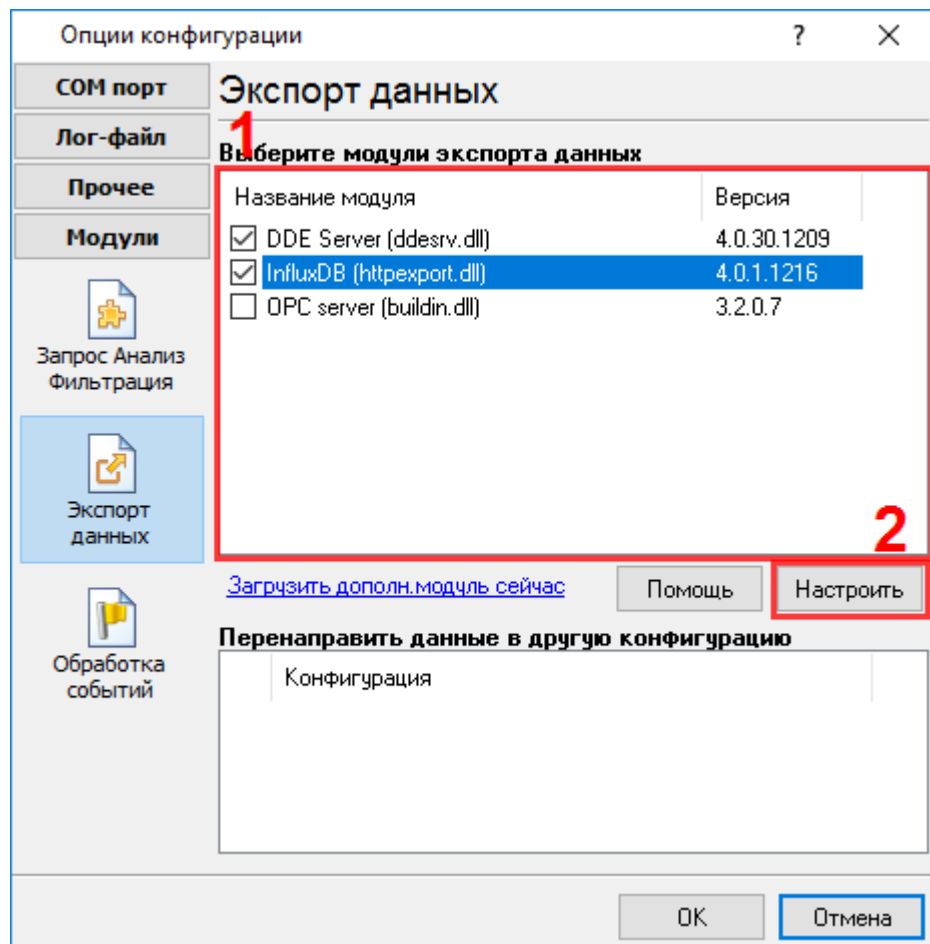
"InfluxDB", "InfluxDB HTTP Export" HTTP API
InfluxDB
SQL.

2

InfluxDB HTTP Export :
: Windows 2000 SP4 , 32-x 64-x
- : 5 MB
:
(), Advanced Serial Data Logger.
Microsoft Vista :
Program Files,
:
1. ,
2. ;
3. Windows Vista .
- Google.

3 InfluxDB HTTP Export

1. (, Advanced Serial Data Logger),
 2. ;
 3. ;
 4. Windows;
 5. " " ;
- .1-2.
- " " " - " "
- " " " " " "



.1.

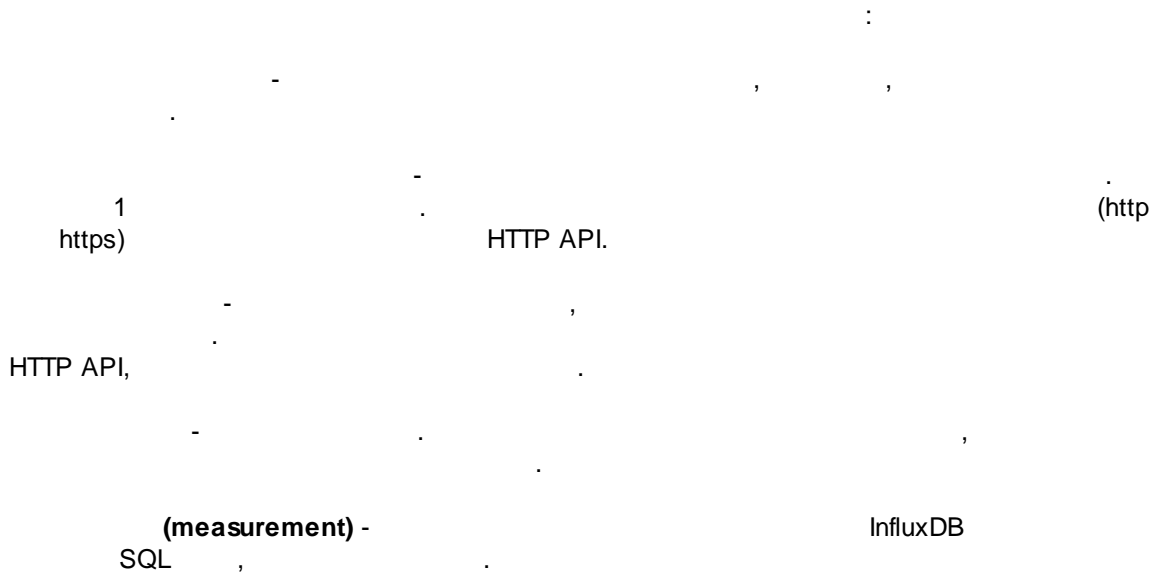
4

Plug-in -

Advanced Serial Data Logger

5

5.1



InfluxDB 4.0.1 build 1216

Параметры соединения

Временно отключено

Ссылка для отправки данных

http://192.168.1.44:8086/write

Метки и поля

Логин

test

Обработка ошибок

Пароль

●●●●●

База данных

mydb

Измерение

measure

OK Отмена

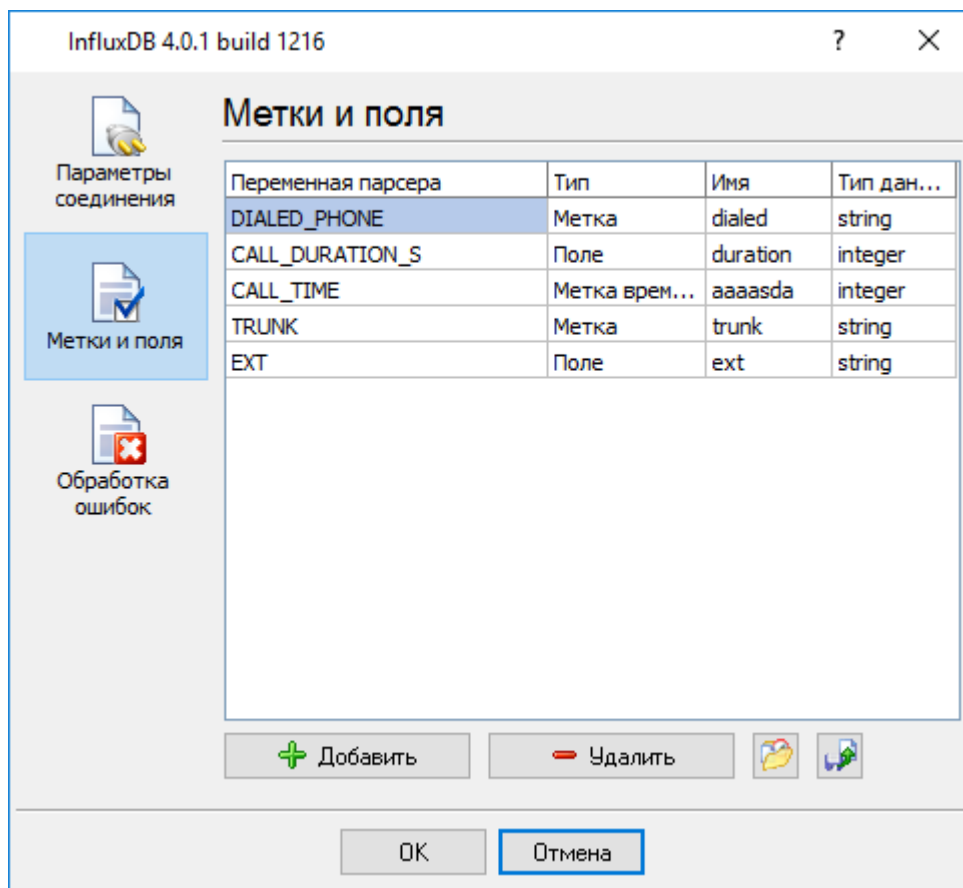
.1

5.2

SQL , " " (tag) " " (field) InfluxDB , " " -

integer, float, boolean. string,

.2



.2

(field),

(,).

5.3 HTTP POST

```

"HTTP Export" HTTP POST
1
https) HTTP API. (http
API ( ) -
"apikey"
'application/x-www-form-urlencoded'.
( ) -
,
urlencoded; charset=utf-8'. HTTP 'application/x-www-form-
(string) - UTF-8.
(integer) -
( , 123456789).
(float) -
123.4E-10).
(datetime) - ISO YYYY-MM-DD HH:NN:SS ( ,
2019-01-01 00:00:01).
(date) - YYYY-MM-DD ( , 2019-01-01).
(time) - HH:NN:SS ( , 00:00:01).
"FALSE" ( ). "TRUE", " "

```


HTTP :
application/json
application/soap
text/plain
application/binary

HTTP_DATA.
"Data encode" "Expressions".
Expression
HTTP_DATA={'value': "12345", "value2": 2}

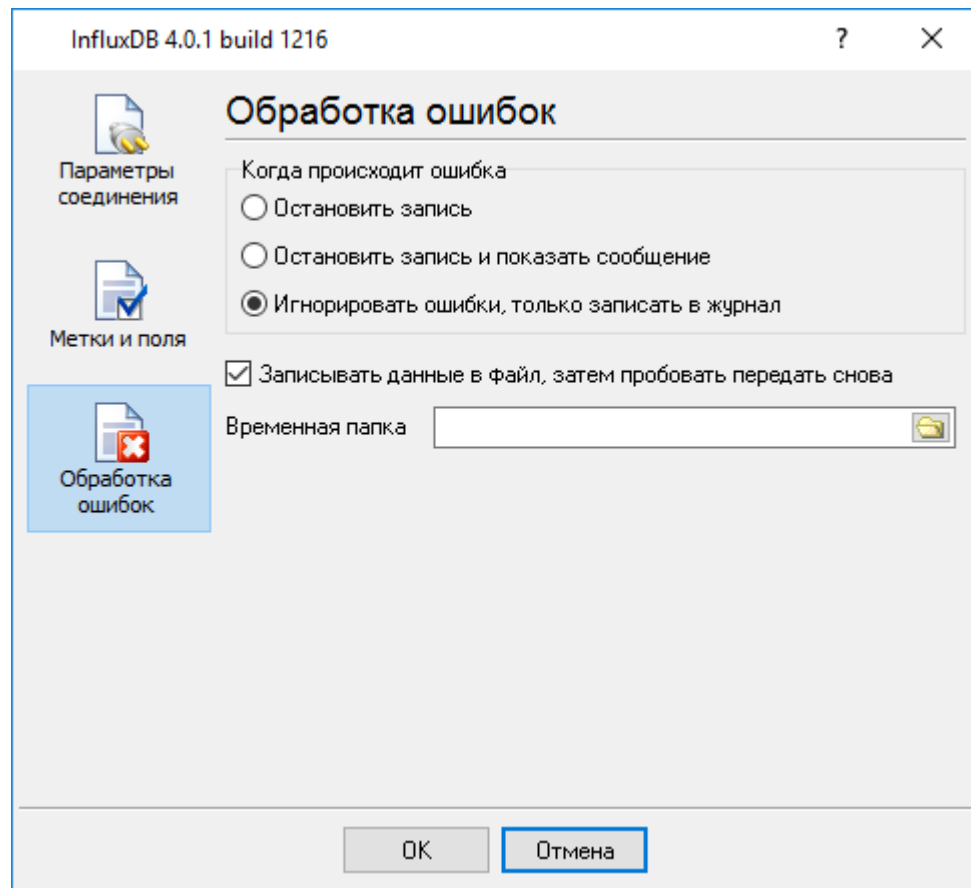
HTTP
:
My-Name: My-Value

5.4 HTTP GET

HTTP GET HTTP POST.
:
1. HTTP GET 1024
2. HTTP_DATA,

5.5

.....
" " "
(. 3).



.3.

1.

2.

3.

6 ?

6.1

"Plugins"

()-

%s [%s] -

(%s) -

%s. (%s) -

%s. (%s) -

(,).

, support@aggsoft.ru.

:" , "%S"