



"Local Database"

1		1
2		1
3	Local Database	2
4		5
5		6
1	6
2	6
3	8
4	8
6	?	9
1	9

1

"Local database"

: Microsoft Excel, RTF, HTML, [CSV](#),
DIFF, SYLK, [Plain text](#), Windows Clipboard, [XML](#), [DBF](#), PDF, Lotus 1-2-3 Quttro.

Microsoft Excel

1.

2.

3.

4.

Microsoft Excel Microsoft Word.

2

Local Database

: Windows 2000 SP4

32-x 64-x

5 MB

(), Advanced Serial Data Logger.

Microsoft Vista

Program Files,

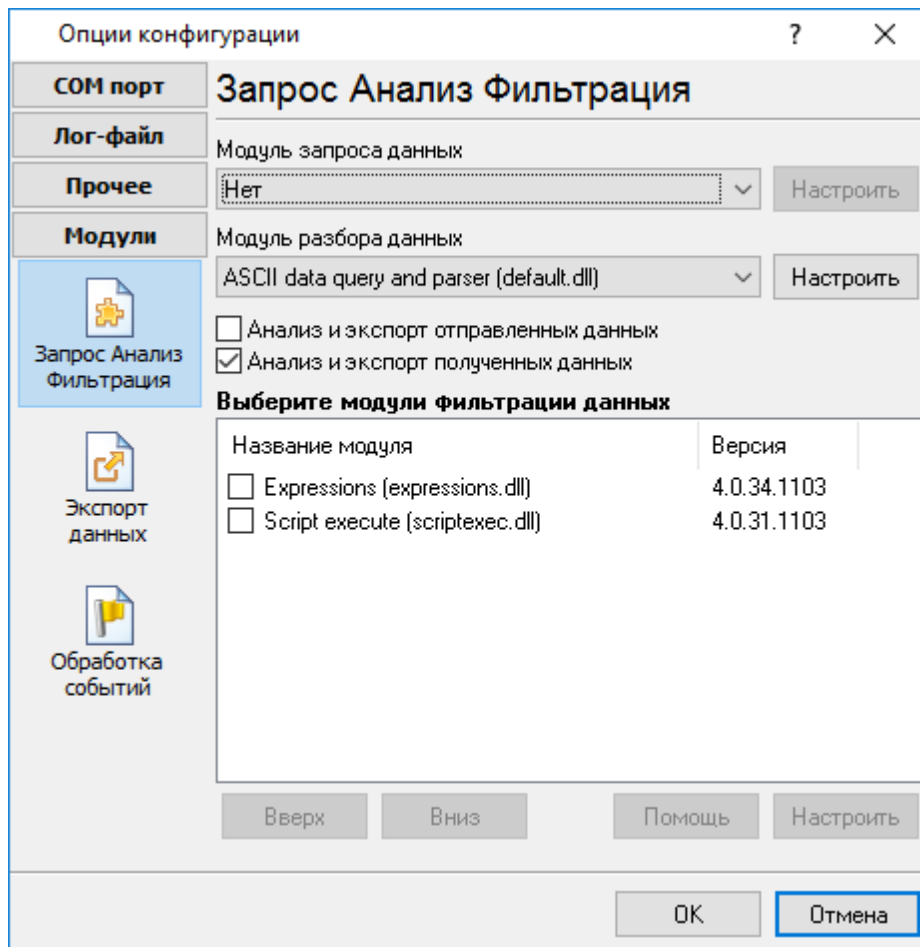
1.

2.

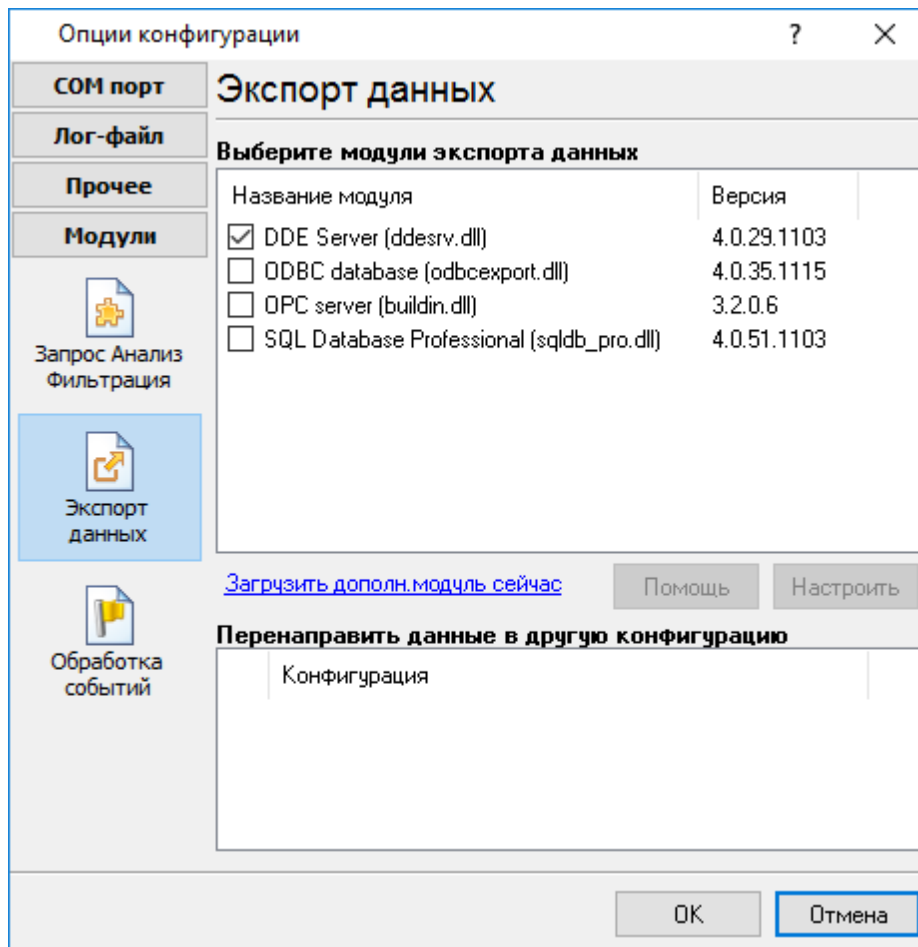
3. Windows Vista

3 Local Database

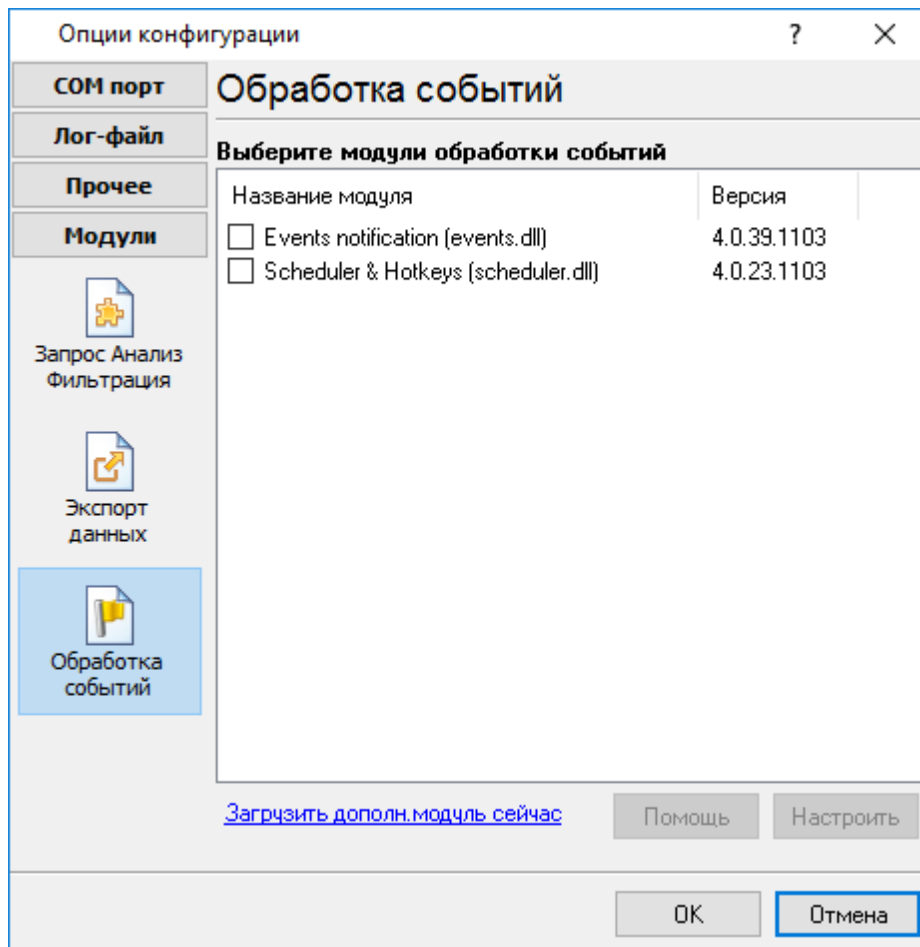
1. (, Advanced Serial Data Logger),
 2. ;
 3. ,
 4. Windows;
 5. " " ;
- .1-2.
- " " " - " "
- " " " "



.1.



.1.



.1.

4

Plug-in -

Advanced Serial Data Logger

5

5.1

5.2

- MS Excel , OLE – XLS;
- RichText (OLE/DDE/RichText.dll) – RTF;
- [_____](#) (TXT) – CSV ;
- [XML](#) - XML

- Lotus 1-2-3 OLE - WK1;
- QuattroPro OLE - WQ1;
- SYLK (Symbolic Link) - SLK;
- DIF (Data Interchange Format) - DIF;
- [LDAP](#) - LDIF;
- SPSS - SAV;
- [DBase](#) (DBF)(BDE) - DBF;
- MS Windows - ;
- [HTML](#) - HTM;
- MS Access - MDB;
- Adobe Acrobat PDF - PDF.

#EE, # - ASCII 9 EE

#09.

1. "
2. "
3. "

XML

XML

" XML".

Internet Explorer 5.0
XML.

Builder XML , " XML, TClientDataset"
 XML , Borland Delphi 7+ Borland C ++
 XML XML

LDAP

DBase (DBF)

DBF - FoxPro dBase III.

HTML

HTML HTML
 HTML <Body>

5.3

5.4

().

6

?

6.1

" " - "Plugins"

()-

%s [%s] -

(%s) -

%s. (%s) -

%s. (%s) -

(, ,) .

support@aggsoft.ru.

"%s"