



"SQL Database Professional"

1		1
2		1
3	SQL Database Professional	2
4		3
5		4
1	4
2	6
3	10
4	12
5	SQL	12
	SQL	14
6	?	16
1	16

1

"SQL Database Professional" (" ")
 Advanced Serial Data Logger /
 (parser) SQL
 : SQLBase, Oracle, Microsoft SQLServer, Sybase, DB2,
 Informix, Interbase, Firebird, MySQL, PostgreSQL.

Microsoft SQLServer Oracle).
 ODBC
 ODBC
 Database,
 SQL SQL

-
-
-

2

SQL Database Professional :
 : Windows 2000 SP4 , 32-x 64-x
 5 MB
 (), Advanced Serial Data Logger.
Microsoft Vista :

Program Files,

- 1.
- 2.
- 3. Windows Vista

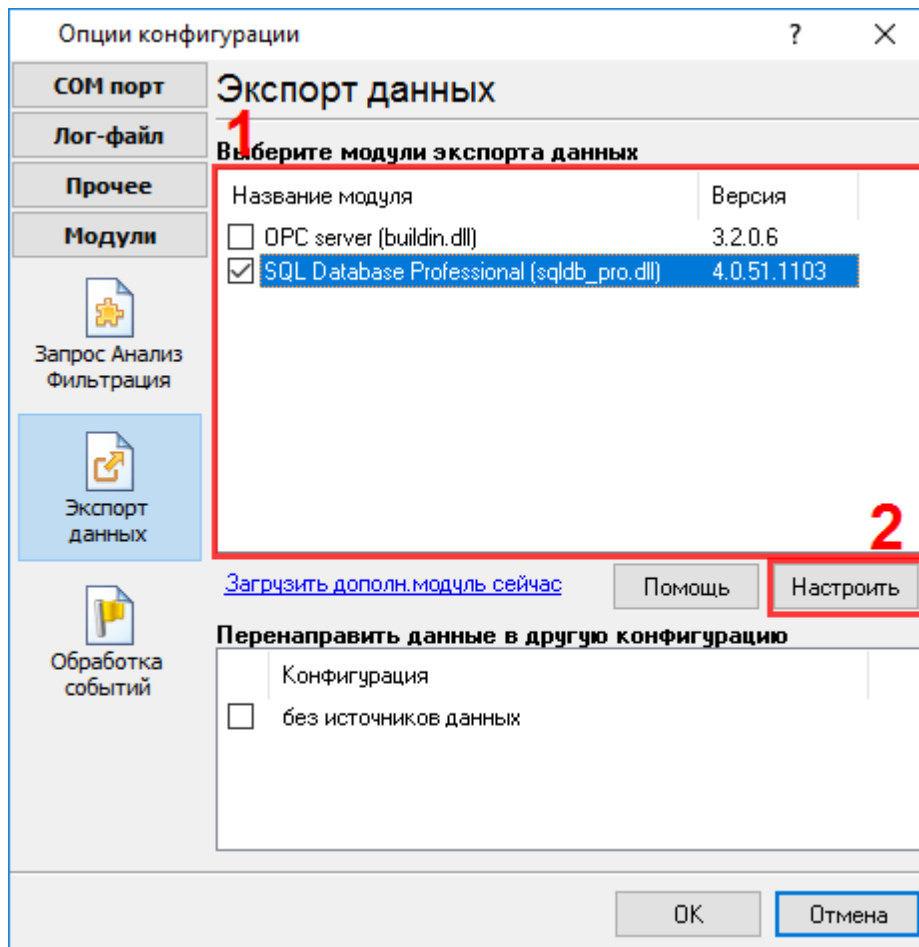
Google.

3

SQL Database Professional

- 1. (, Advanced Serial Data Logger),
- 2. ;
- 3. Windows;
- 4. " " ;
- 5. " " ;

.1-2.

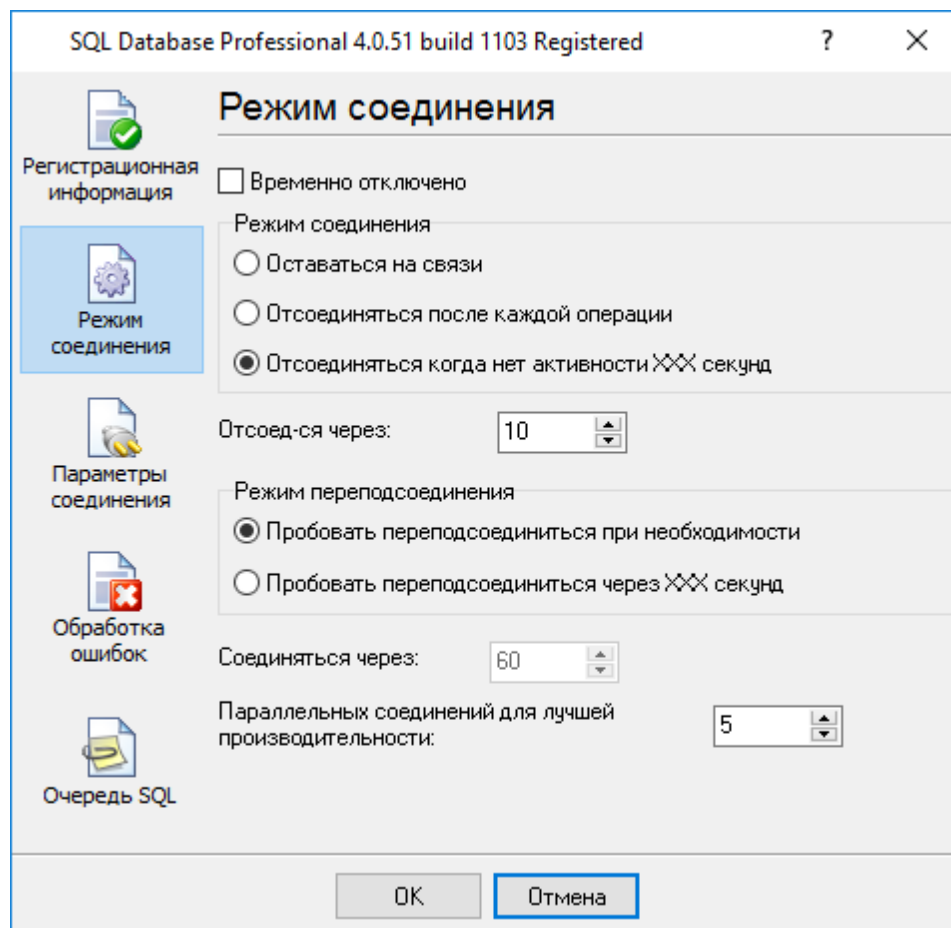


.1.

4

Plug-in -

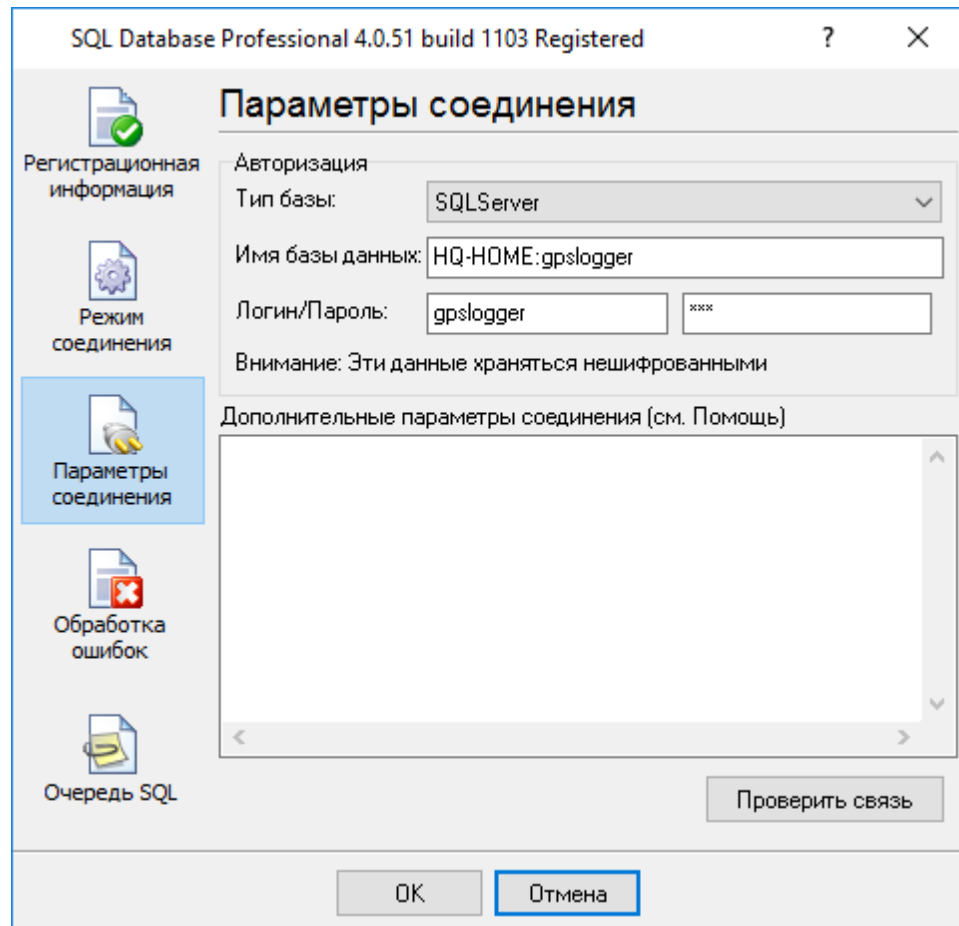
Advanced Serial Data Logger



.1

XXX

5.2



.2.

- **DB2, Informix ODBC** – DSN, "Informix: SERVICE=ids_srv;HOST=yourhost;PROTOCOL=OLSOCTCP;SERVER=ids_srv; DATABASE=sysmaster;UID=informix;PWD=informix."

- **Interbase** – (

<server_name>:<filename>	TCP
\\<server_name>\<filename>	NetBEUI
<server_name>@<filename>	SPX

- Oracle – / ().
- MySQL, MS SQL Server Sybase SQL Server –

, remsrv.dbname
REMSRV.

DBNAME,

(local).

" " "

"

"

"

AUTOCOMMIT	auto-commit	
APPLICATION NAME	,	MSSQL Sybase
HOST NAME	,	MSSQL Sybase
COMMAND TIMEOUT	,	MSSQL, ODBC, SQLBase, Sybase
COMPRESSED PROTOCOL	True	MySQL
ENABLE BCD	NUMERIC BCD	Oracle, Interbase
ENABLE INTEGERS	NUMERIC INTEGER	Oracle, Interbase
ENABLE MONEY	NUMERIC (1-4) CURRENCY	MySQL

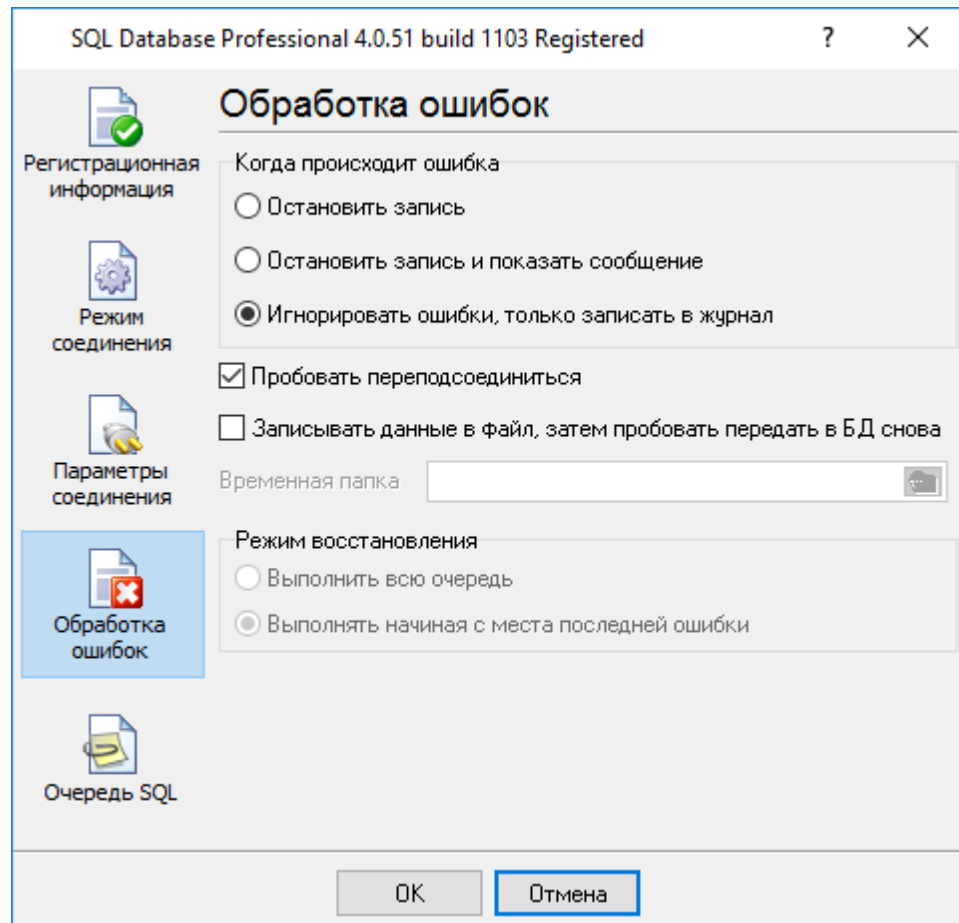
ENCRYPTION	false.	Sybase
FIELD REQUIRED	NULL	
FORCE OCI7	OCI7 (SQL*Net 2.x - Oracle7 interface) Oracle	Oracle
LOCAL CHARSET		Interbase
LOGIN TIMEOUT		DB2, Informix, ODBC, MSSQL, MySQL, Sybase
MAX CURSORS		MSSQL Sybase
MAXCHARPARAMLEN	255	
MAXFIELDNAMELEN	50	Oracle
MAX STRING SIZE	blob	Firebird, Interbase, ODBC
NEW PASSWORD	'Password expired'	Oracle8
QUOTED IDENTIFIER		MSSQL Sybase
PREFETCH ROWS	prefetched (Oracle8: SELECT LONG)	DB2, Informix, ODBC, Oracle8
ROLE NAME		Interbase Oracle (SYSDBA/SYSOPER roles)

SERVER PORT	TCP/IP	MySQL, PostgreSQL
SINGLE CONNECTION	/ false	MSSQL Sybase
SQL DIALECT	SQL Dialect (1,2,3)	Interbase
TDS PACKET SIZE	TDS. , "Login failed"	Sybase
TRANSACTION LOGGING	FALSE, transaction logging, rollback	SQLBase
RTRIM CHAR OUTPUT	CHAR. True	DB2, Informix, Interbase, Oracle, ODBC Sybase
XA CONNECTION	, () TM , "Database name". False	Oracle8i
XXX API LIBRARY	, XXX , Oracle, SQLServer, Interbase	

5.3

(PRIMARY KEY)
 (FOREIGN KEY)

" (.3)



.3.

1.

2.

5.4

,
:
,
, Advanced Serial Data Logger.
,"

5.5

SQL

INSERT
SQL
"),
SELECT
SQL
INSERT
SQL (SQL
' SQL
SQL
" SQL" (. 4)

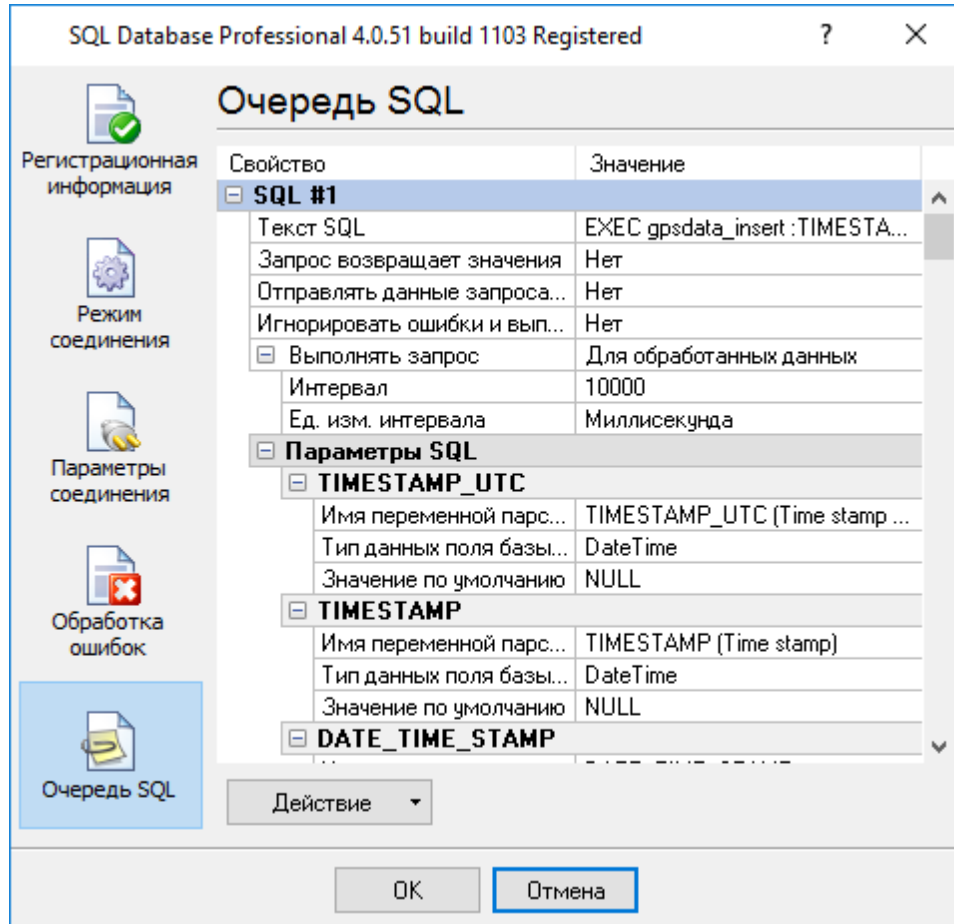
5.5.1

SQL

SQL

SQL

SQL (.5)



.5. SQL

SQL –

SQL

SQL

SQL
SQL

" (.6).

SQL

":P1"
()

SQL /

"OK"

(, SELECT).

SQL

SQL

Простой SQL редактор

```

1 EXEC gpsdata_insert :TIMESTAMP.UTC, :TIMESTAMP, :DATE_T
2 :LONGITUDE, :LATITUDE, :LONGITUDE_DEG, :LATITUDE_DEG,
3 :ALTITUDE, :ANGLE, :SPEED,
4 :AI1, :AI2, :AI3, :AI4,
5 :SATELLITES, :GPS_STATE, :GSM, :EVENTID,
6 :V1, :V2,
7 :TRACK, :TRACK2,
8 :DI1, :DI2, :DI3, :DI4, :DI5, :DI6, :DI7, :DI8,
9 :DO1, :DO2, :DO3, :DO4, :DO5, :DO6, :DO7, :DO8,
10 :FLAG1, :FLAG2, :FLAG3, :FLAG4,
11 :FUEL, :FUEL1, :FUEL2, :RPM
12 ;

```

Действие

.6. SQL

SQL

SQL

" SQL" (.5).

()

SQL".

3

:

Advanced Serial Data Logger).

```

,
: NULL DEFAULT,
NULL
"
".
,
SQL
:
select (max(id)+1) as max_id from test_datas

ID,
max_id.
MAX_ID
MAX_ID
SQL
null (
test_datas
),
P1 (
.5)
1.
SQL
null.

```

6

?

6.1

```

"
" -
"Plugins"
( )-
%s [%s] -

```

(%s) –

%s. (%s) –

%s. (%s) –

(, ,).

support@aggsoft.ru.

"%s"