



Advanced Serial Data Logger

1		1
1	Advanced Serial Data Logger	1
2	2
2		3
1	3
2	4
3	5
4	5
3		6
1	6
2	6
4		6
1	6
2	8
3	10
4	11
5	11
5		12
1	12
	(COM)	12
2	17
	17
	19
	21
3	-	22
	-	22
	-	25
	27
4	28
	28
	OPC	32
5	36
	36
	38
	39
	Windows 2000	40

Windows Vista 43
..... 44

6 RS-232 0

1 RS-232 0

2 DB9 (9 pin) RS-232 0

3 DB25 (25 pin) RS-232 0

4 RS-232 0

5 RS-232 0

7 ? 45

1 45

2 (FAQ) 46

Advanced Serial Data Logger

Advanced Serial Data Logger

Windows 2000+,

: <http://www.aggsoft.ru/>

: <http://www.aggsoft.ru/serial-data-logger.htm>

: <http://www.aggsoft.ru/rs232-pinout-cable/>

1.2

ASCII -

ASCII -

Windows
ASCII. ASCII *.TXT (,
README.TXT).

Binary File -

ASCII (0 255).

Bytes () -

Bit () -
8

: 0 1. 8

Baud Rate -
) ,

BPS (

600 , 2400 bps (), ,

Cable () -

COM port -

4

IBM IBM-
COM1, COM2, COM3 COM4.

Data bits -

(),

Flow control -

" "

()

Handshaking -

Internet () -

TCP/IP

PC () -

Personal Computer ().

Ports () -

Protocol () -

RS232, RS423, RS422 RS485 - Electronics Industry Association (EIA)

RS232, RS423, RS422, RS485,

EIA

"RS"

(recommended standard).

"EIA".

Stop bits () -

1 2.

(Log file) -

(. log) —

2

2.1

Copyright © 1999-2019 AGG Software.
All Rights Reserved

1. Advanced Serial Data Logger -
- 2.
3. Advanced Serial Data Logger ,
- 4.
5. Advanced Serial Data Logger sales@aggsoft.ru
6. Advanced Serial Data Logger ,
Advanced Serial Data Logger .
7. **Advanced Serial Data Logger** "AS IS".
- 8.
9. Advanced Serial Data Logger ,
10. - ,
Advanced Serial Data Logger ,
Advanced Serial Data Logger.

2.2

shareware-

 5.

- 21 ;
- ;
- 65535 ;

2.3

shareware-

Internet, [3](#)

Internet,

2.4

Advanced Serial Data Logger	support@aggsoft.ru
	support@aggsoft.ru
	sales@aggsoft.ru

3

3.1

- Windows 2000 SP 4 - Windows 10 (x86 x64,).

COM-

3.2

Advanced Serial Data Logger.

, Advanced Serial Data Logger
Files\Advanced Serial Data Logger"

"\Programs

Advanced Serial Data Logger

4

4.1

Advanced Serial Data Logger

Advanced Serial Data Logger " "

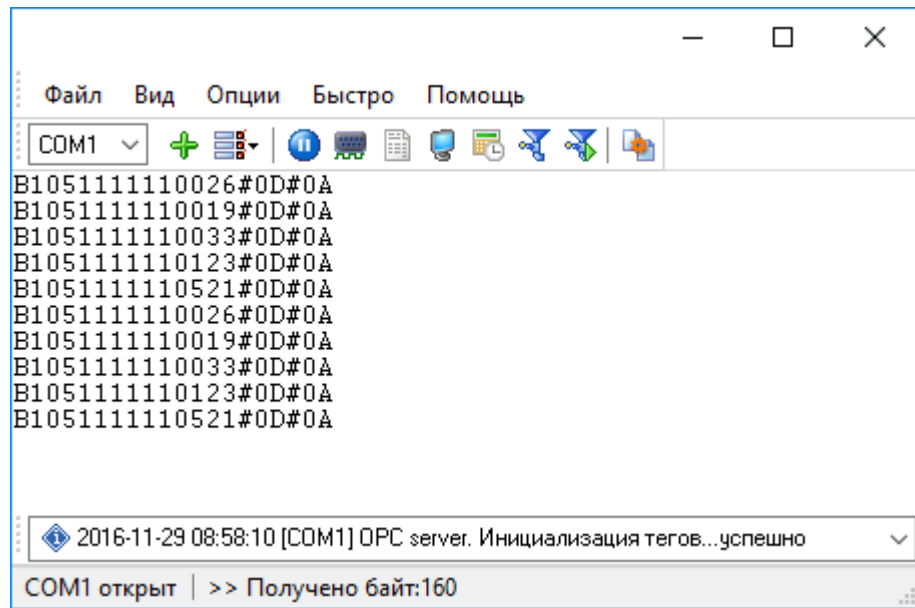
(. 1.1.1),

1.1.2)

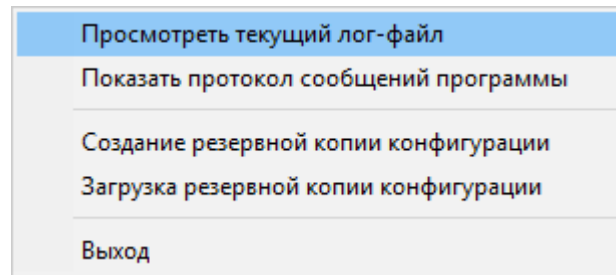
8

..."),

" (



. 1.1.1.



. 1.1.2.

C:\. ,

1-2-3-4**1.**

" "

2.

" " ()

3. _____ [28]

" " , , , .

4. Advanced Serial Data Logger ,

Advanced Serial Data Logger ,

4.2

- RS-232 (
- RS-485); "
- " (-), ,
- ;
- COM - , , ,

_____ [12] " _____

_____ [22] - ,

_____ [25] - , _____ (. 1.1.1 [6]).

Advanced Serial Data Logger " _____ [17] , _____ [36]

Advanced Serial Data Logger

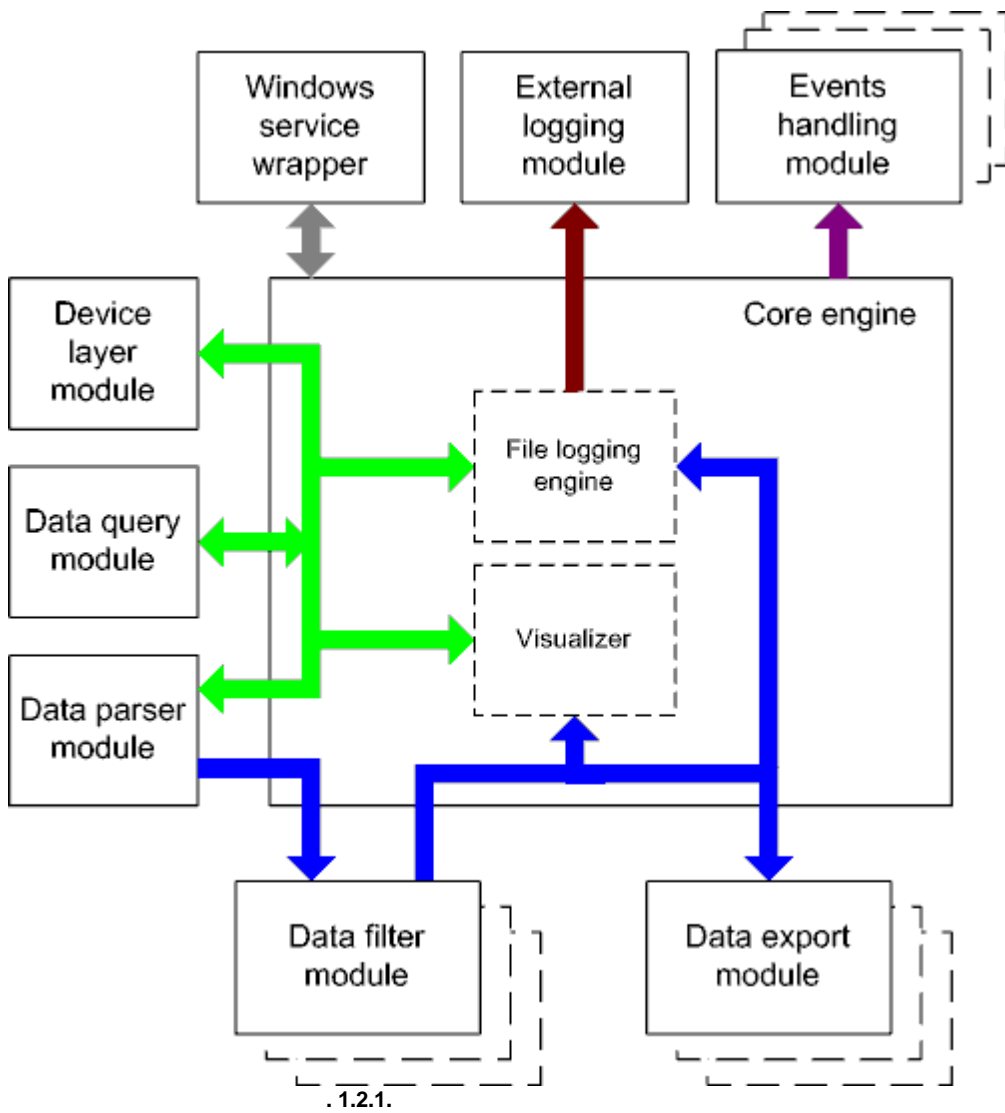
Advanced Serial Data Logger.
_____ (plug-ins),

"_____".

_____ (

([1.1.1](#)), _____

4.3



- - ()
- - ()

- Core engine -
- Device layer module -
- Data query module -
- Data parser module -
- Data filter module -
- Data export module -
- Visualizer -
- File logging engine -
- Windows service wrapper -
- External logging module -
- Events handling module -

4.4

Windows. / COM-

4.5

1.

2.

1.

2.

regedit.exe

Windows x64

HKEY_LOCAL_MACHINE\SOFTWARE\Wow6432Node\AGG Software\Advanced Serial Data
Logger

Windows x32

HKEY_LOCAL_MACHINE\SOFTWARE\AGG Software\Advanced Serial Data Logger

3.

:
Ctrl+S -
Ctrl+D -
Ctrl+P -

Ctrl+L - log- ;
 Ctrl+R - ;
 Ctrl+E - Windows;
 Ctrl+M - , .

4. ,
 5. INI .
 6. " " .
- 10 ,

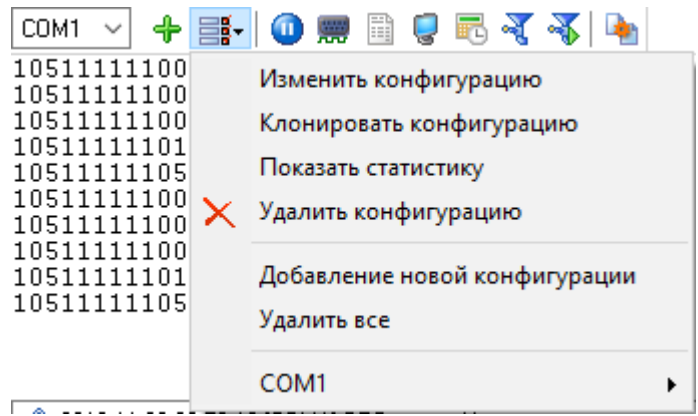
5

5.1

5.1.1 (COM)

([1.1.1](#)⁶⁴) " " ,
 (. 2.1.2).
 " COM "

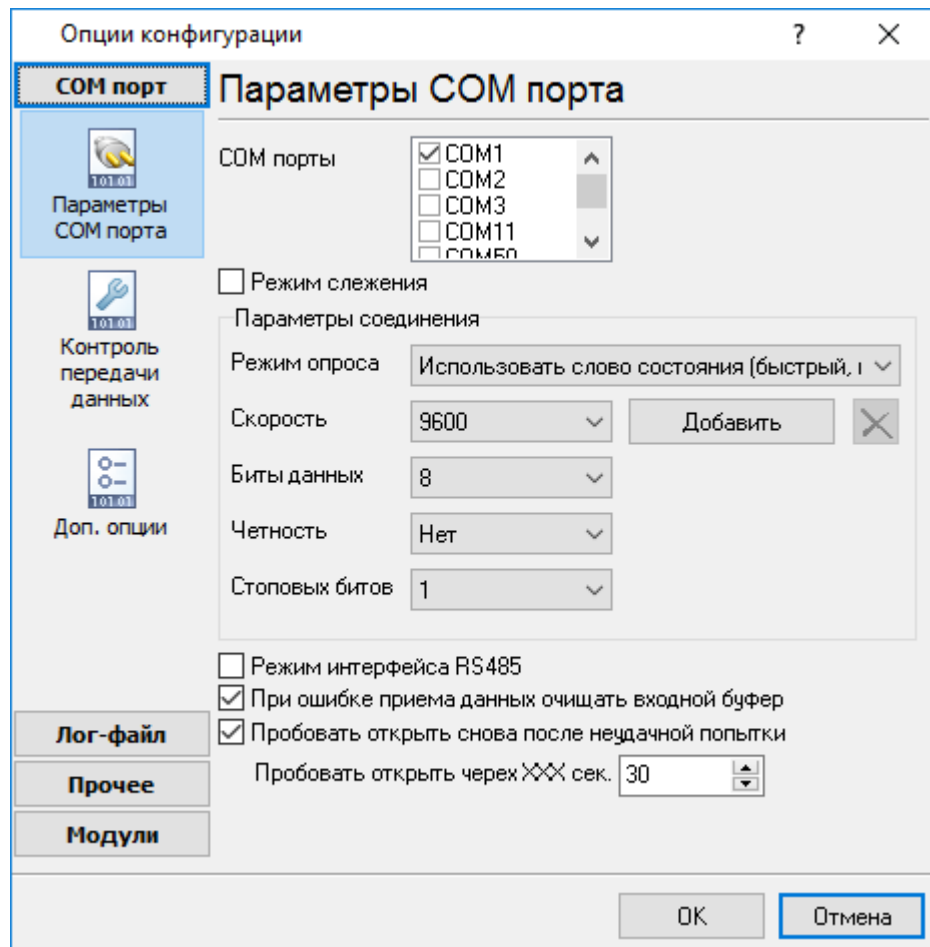
" " (. 2.1.1).



. 2.1.1.

COM-
 COM-
 COM-

" (. 2.1.1).



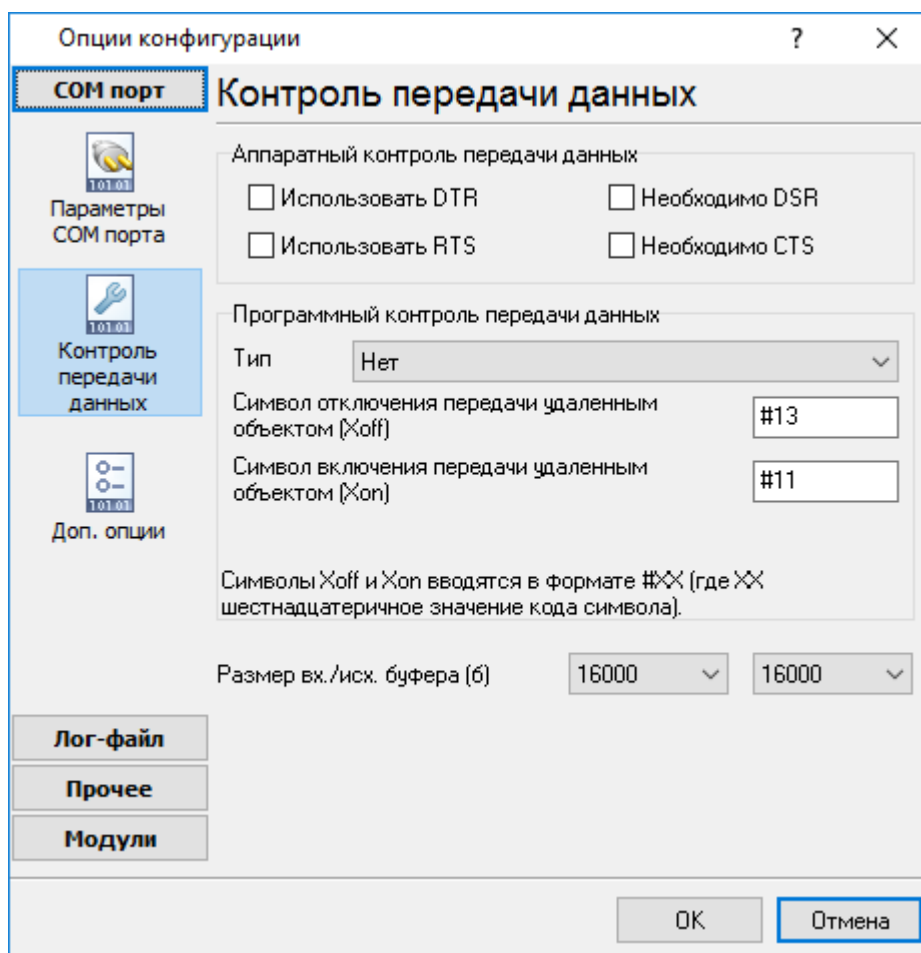
. 2.1.2. COM-

RS-485

RTS-

API- Windows
 / : API-
 Windows.

API,



. 2.1.3

./ . COM

Advanced Serial Data Logger

COM-

COM-

Advanced Serial Data Logger,
COM-

Advanced Serial Data Logger.

UART (UART receiver parity error) -

;

UART (UART receiver overrun),
UART (UART receiver framing error) -

;

CTS (transmit timeout waiting for CTS),
DSR (transmit timeout waiting for DSR),
RLSD (transmit timeout waiting for RLSD) -

,

;

(transmit queue is full) -

,

Advanced Serial Data Logger

;

break (break condition received)

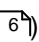
Windows NT

" ->

" [_____](#) 

5.2

5.2.1

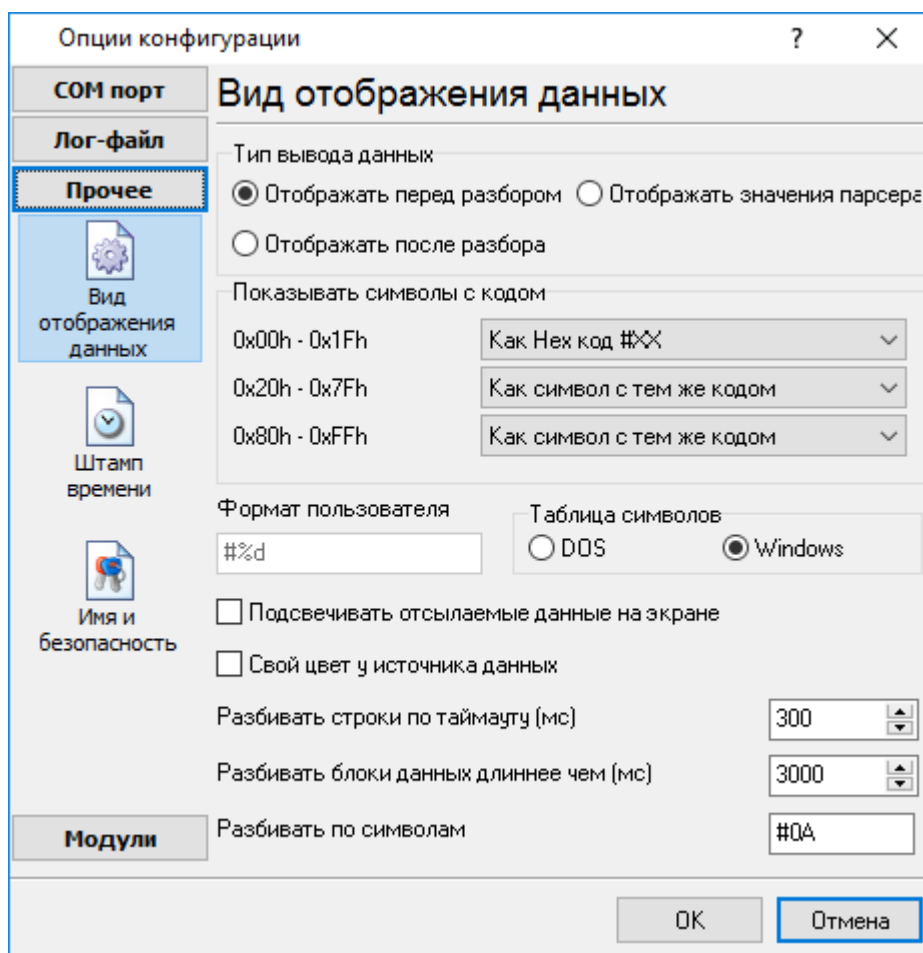
([1.1.1](#) 

2

(3.1.1):

1.

2.



. 3.1.1.

" (. 3.1.1)

Hex-

,%d

,%x -

: Windows DOS

(OEM).

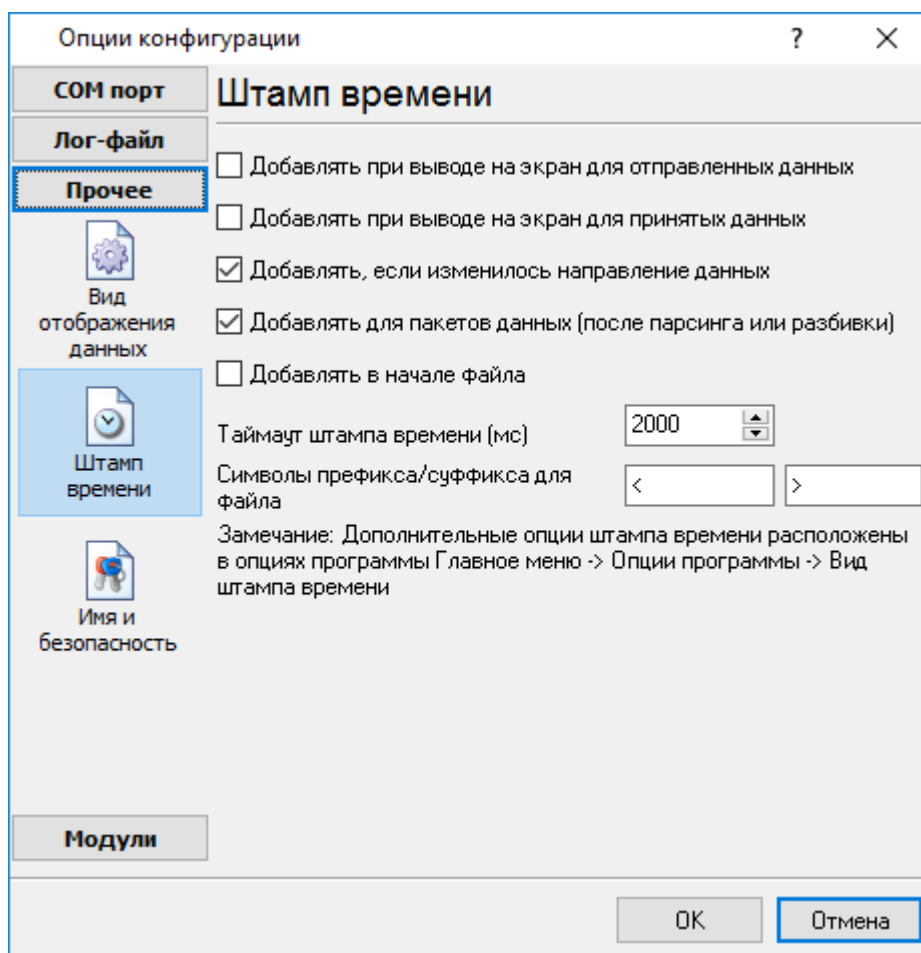
0,
0,
3.1.1

5.2.2

(3.2.1)

()

38



. 3.2.1.

. :>#0D#0A

5.2.3

(. 3.3.1) :

-

"

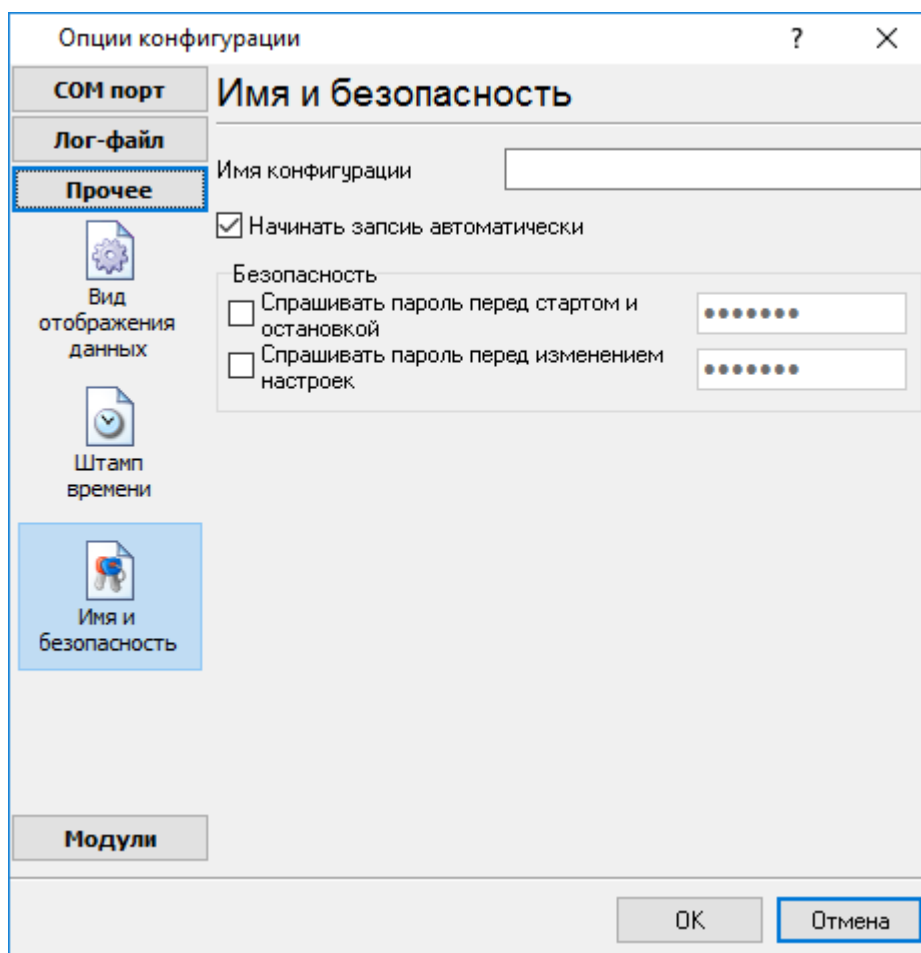
"

44

"

/

"

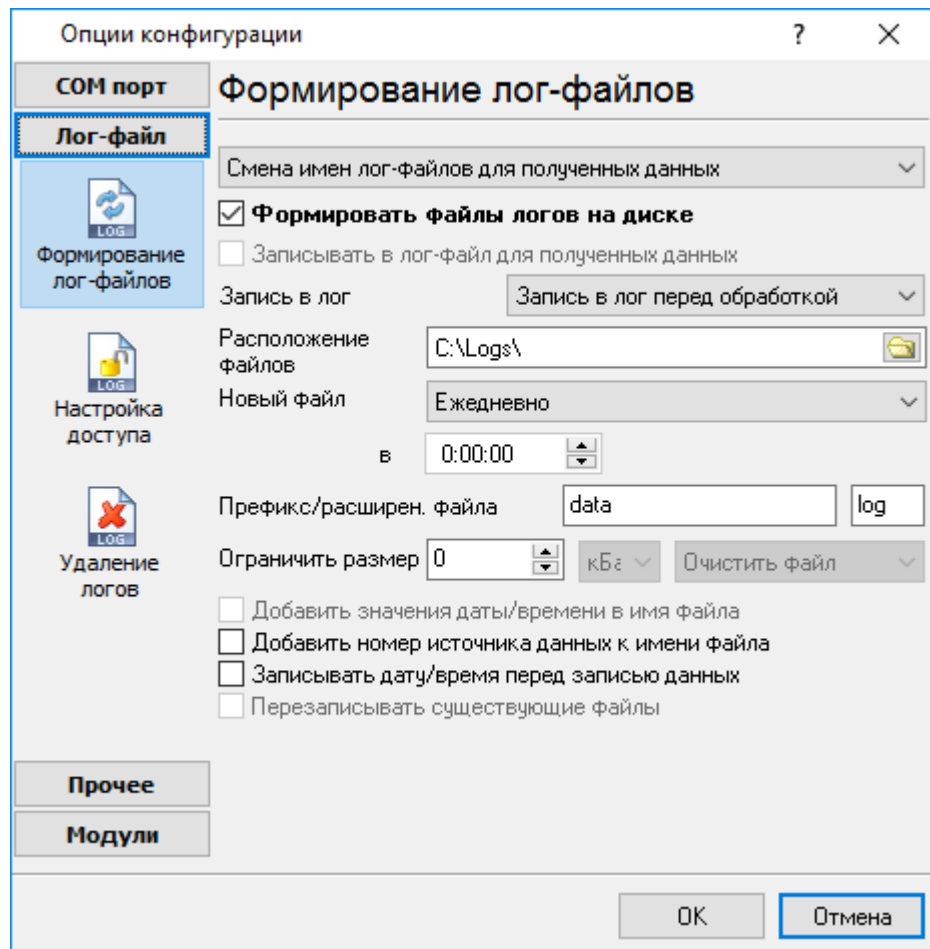


. 3.3.1.

5.3 -

5.3.1 -

- (). (. 4.1.1).



. 4.1.1.

Advanced Serial Data Logger

```

"sampleYYYYMMDD.log". 21-
2003 - "sample20030321.log".
• ( ).
, , , .
" " :
1. - , .
DDMMYYYY, DD - , MM -
YYYY - ;
2. - . MMYYYY;
3. - YYYYMMDD;
4. - .
sample00000001.log. -
5. ;
6. - . WWYYYY, WW -
, YYYY -
7. ;
8. - . HHDDMMYYYY;
9. - -
, .
:
d - , (1 - 31);
dd - , (01 - 31);
ddd - ( - ) ,
;
dddd - ( - )
, ;
m - , (1 - 12);
mm - , (01 - 12);
mmm - ( - ) ,
;
mmmm - ( - ) ,
;
yy - (00 - 99);
yyyy - (0000 - 9999);

```

```

h - , (0 - 23);
hh - , (00 - 23);
n - , (0 - 59);
nn - , (00 - 59);
s - , (0 - 59);
ss - , (00-59).

```

```

: "sample_log", "txt".
: = sample_log_, = txt ( !).
HHDDMMYYYY.

```

```

4 7 /

```

```

sample20030321.log.

```

```

/

```

```

4 7.

```

```

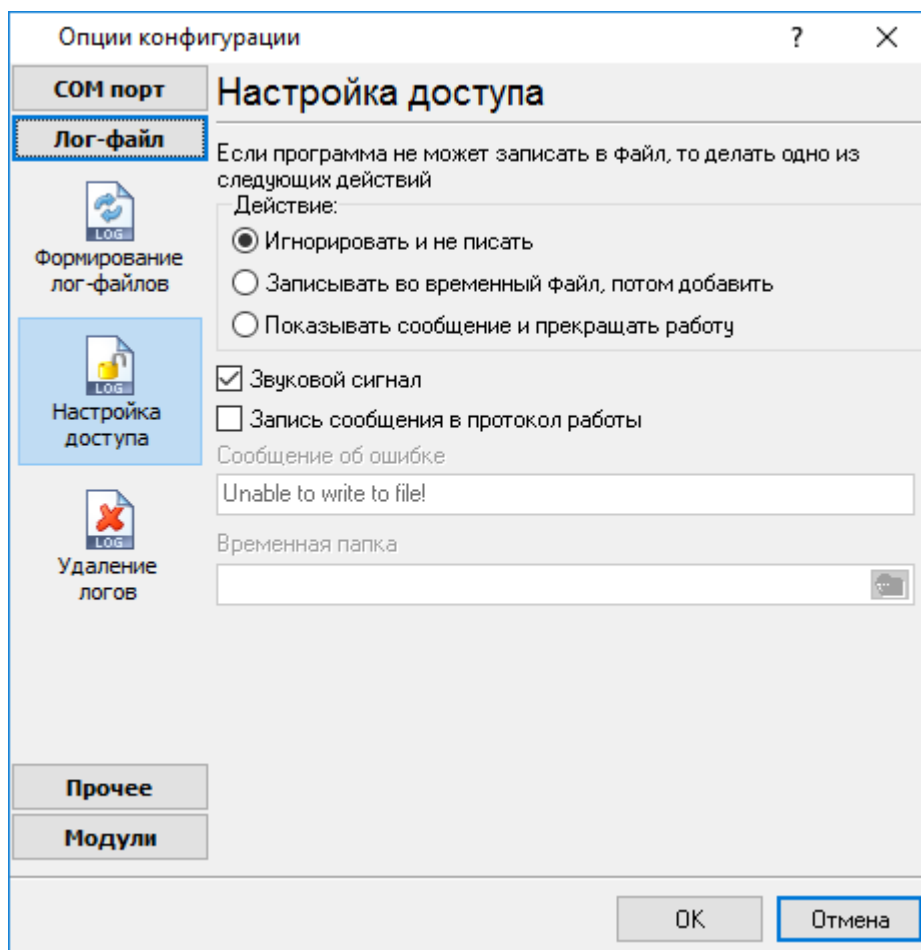
" "
1. - !
2. -
3. ( ) -
4. ( ).

```

5.3.2

Office (, Microsoft Word),
Serial Data Logger

Microsoft
Advanced



. 4.2.1.

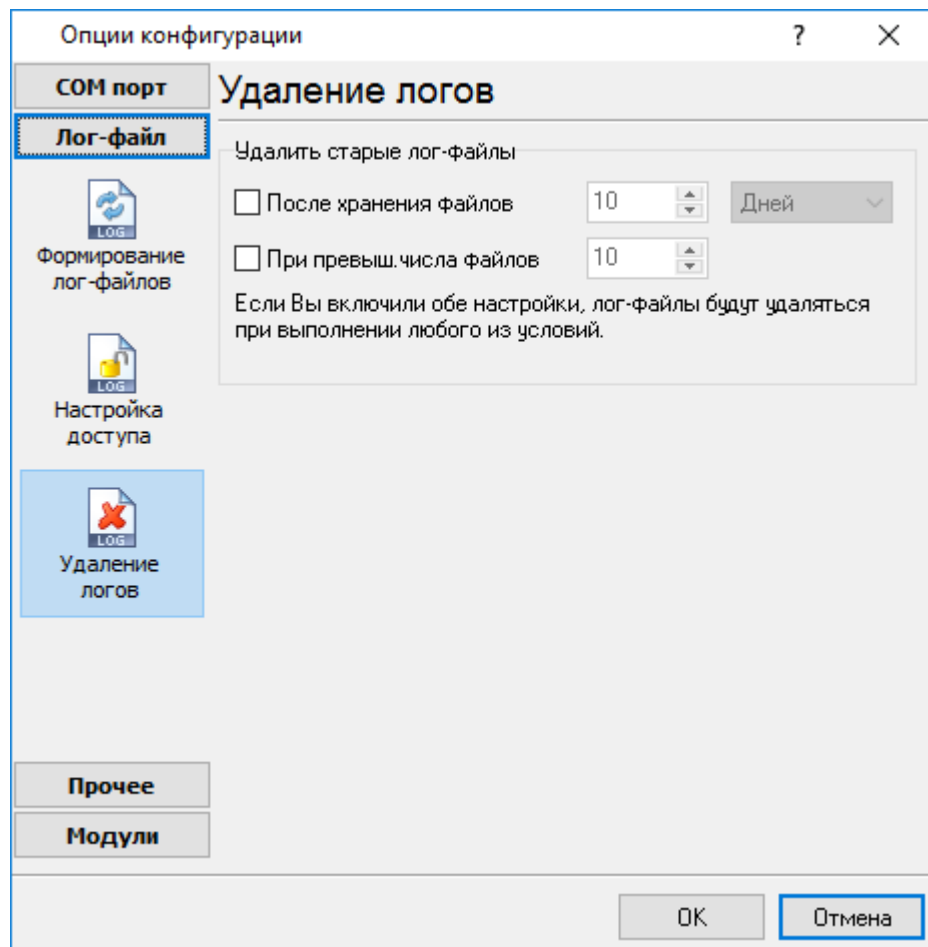
Advanced Serial Data Logger

(. 4.2.1),

-
-
-

5.3.3

(рис. 4.3.1).



. 4.3.1.

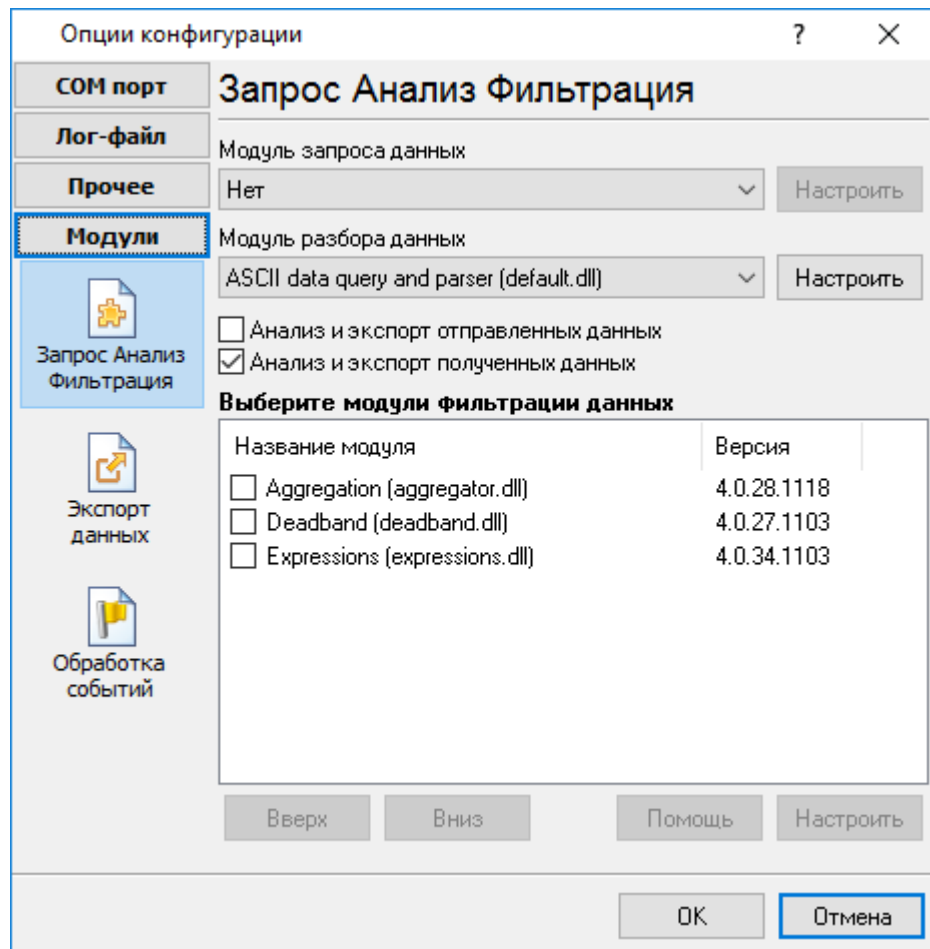
5.4

5.4.1

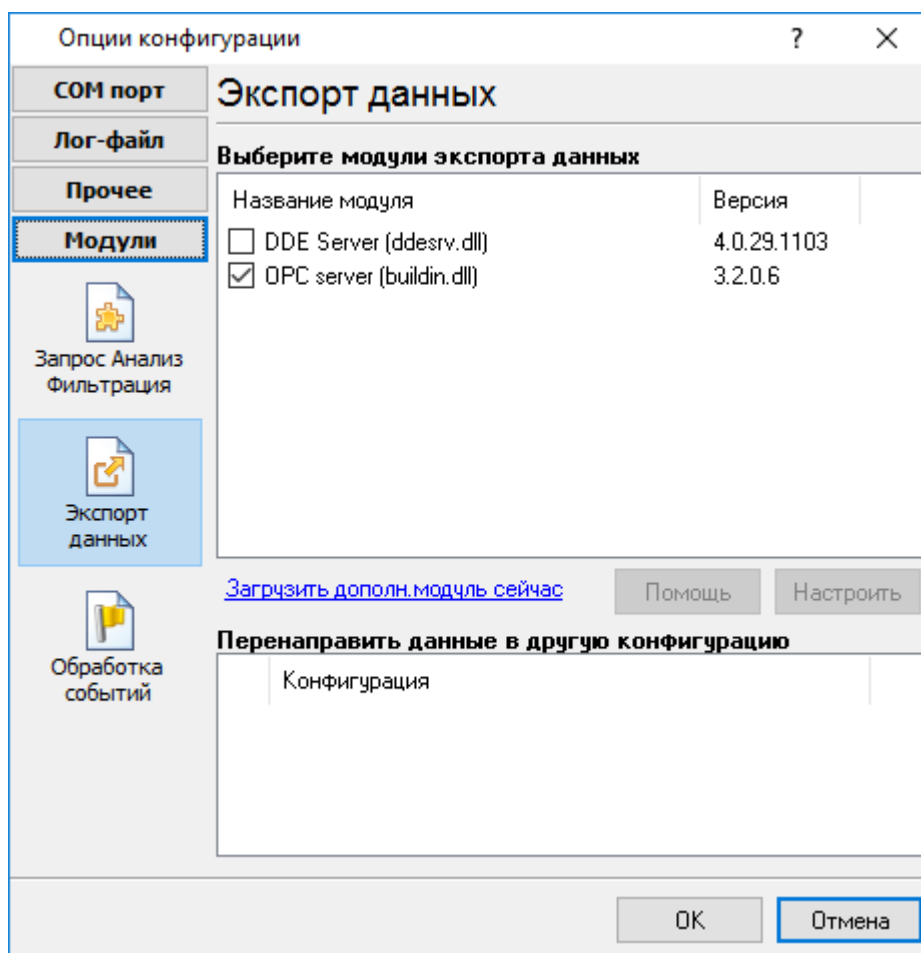
, (,) , " " (. .).

Advanced Serial Data Logger :

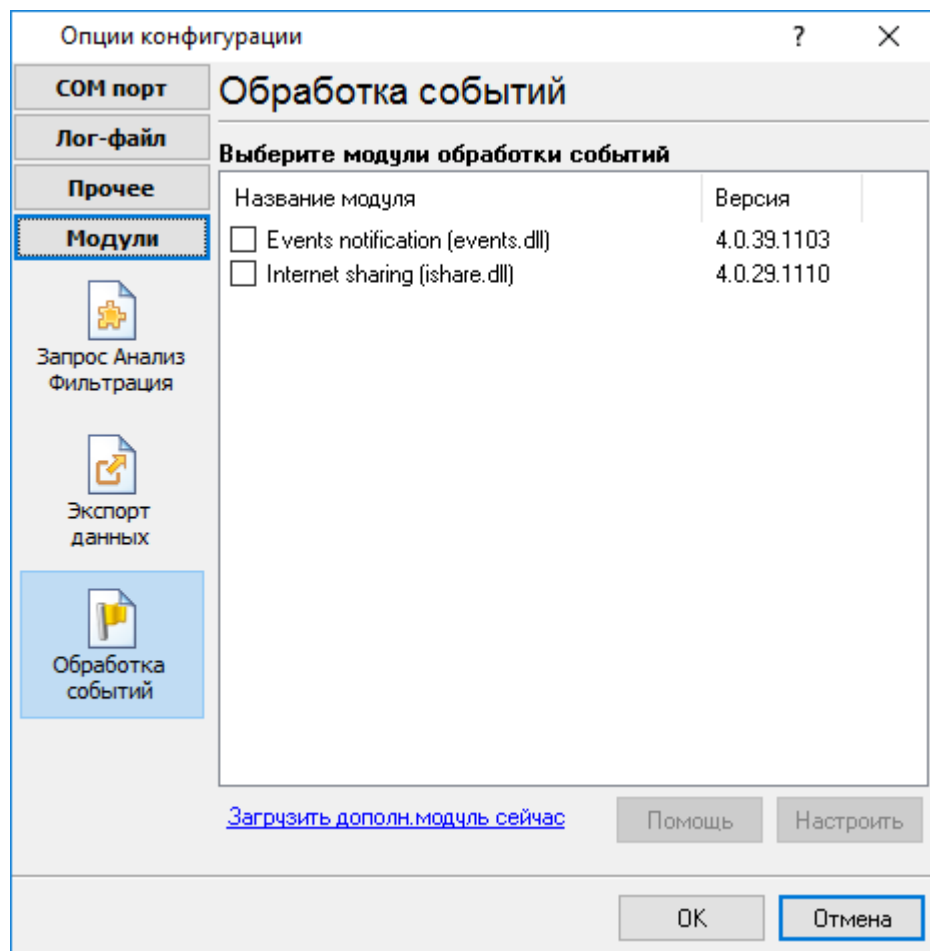
- - ; (, ,) - () , ;
- - ;
- - ;
- - , Excel ;
- (. 5.1.3) - Advanced Serial Data Logger. , " - " " , ". , , . .



. 5.1.1.



. 5.1.2.

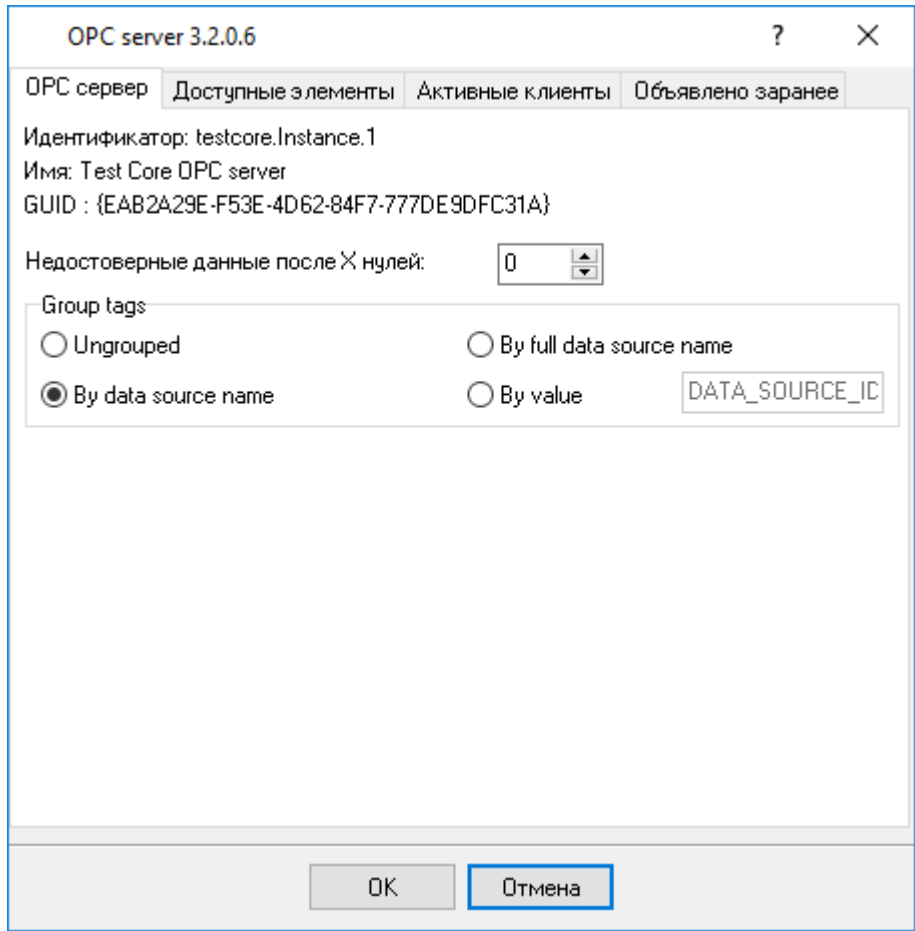


. 5.1.3.

"OK".

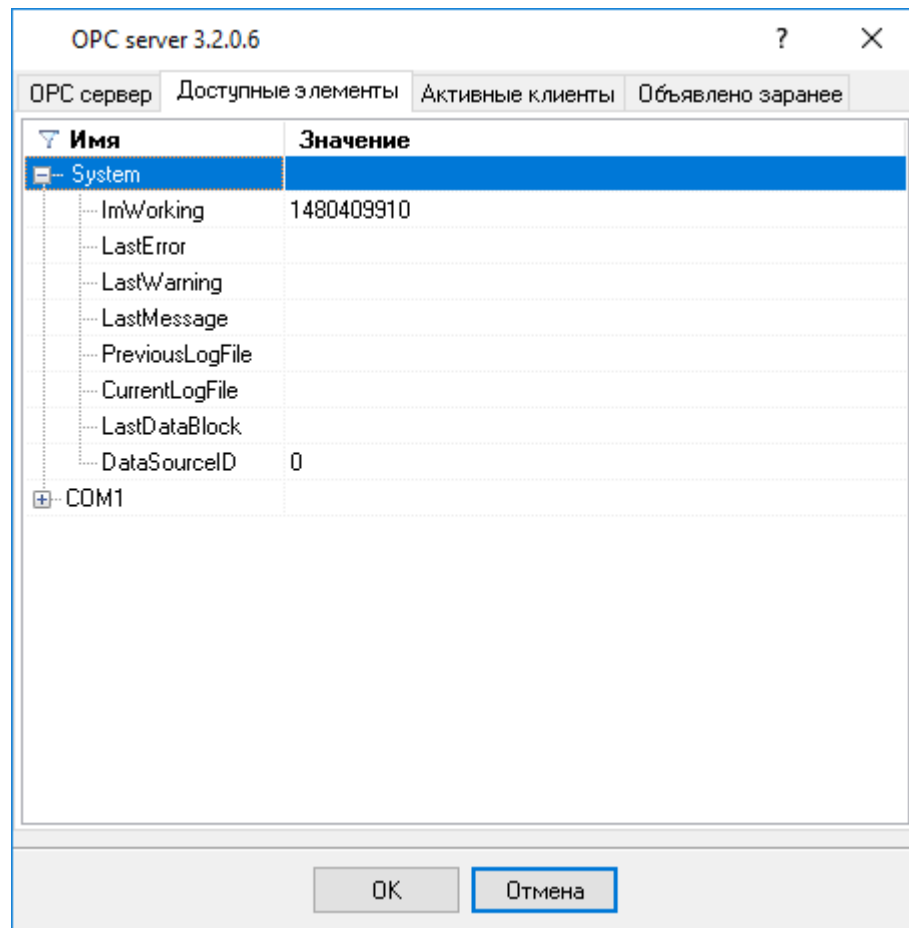
5.4.2 OPC

Advanced Serial Data Logger OPC, Advanced Serial
Data Logger OPC (5.2.1).
OPC Core Components Redistributable
www.opcfoundation.org (
OPC OPC



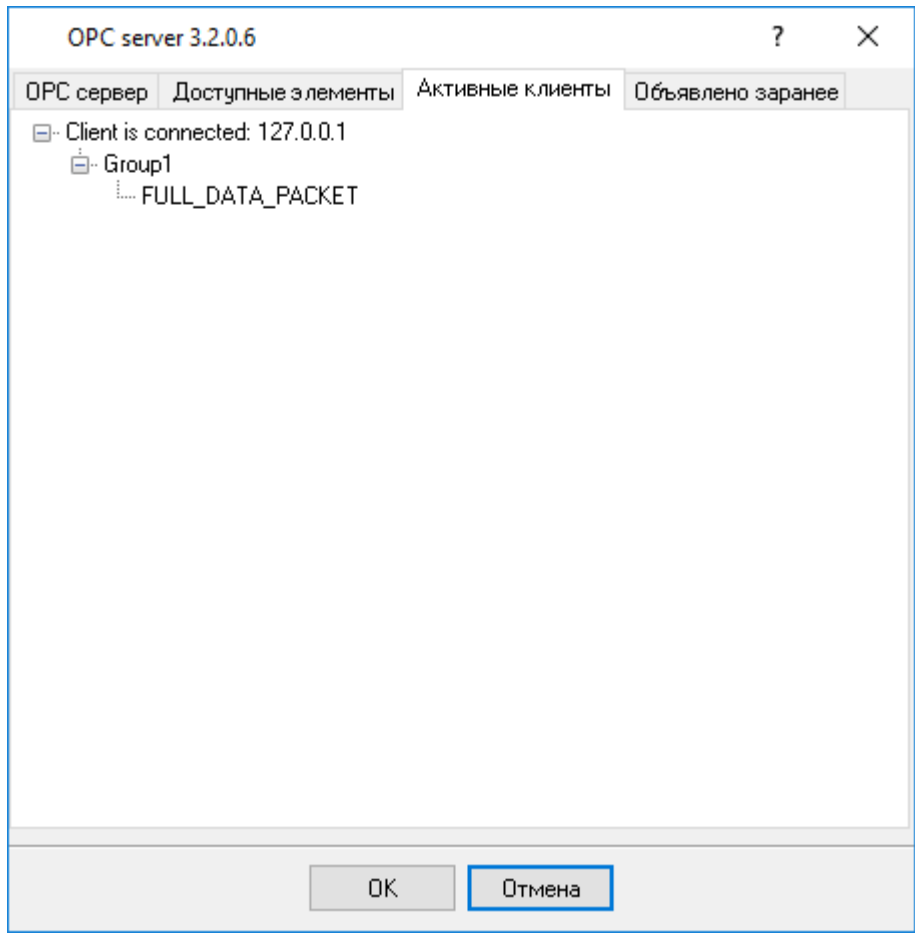
. 5.2.1. OPC

Advanced Serial Data Logger, OPC (.2). OPC



. 5.2.2.

OPC



. 5.2.3.

Advanced Serial Data Logger

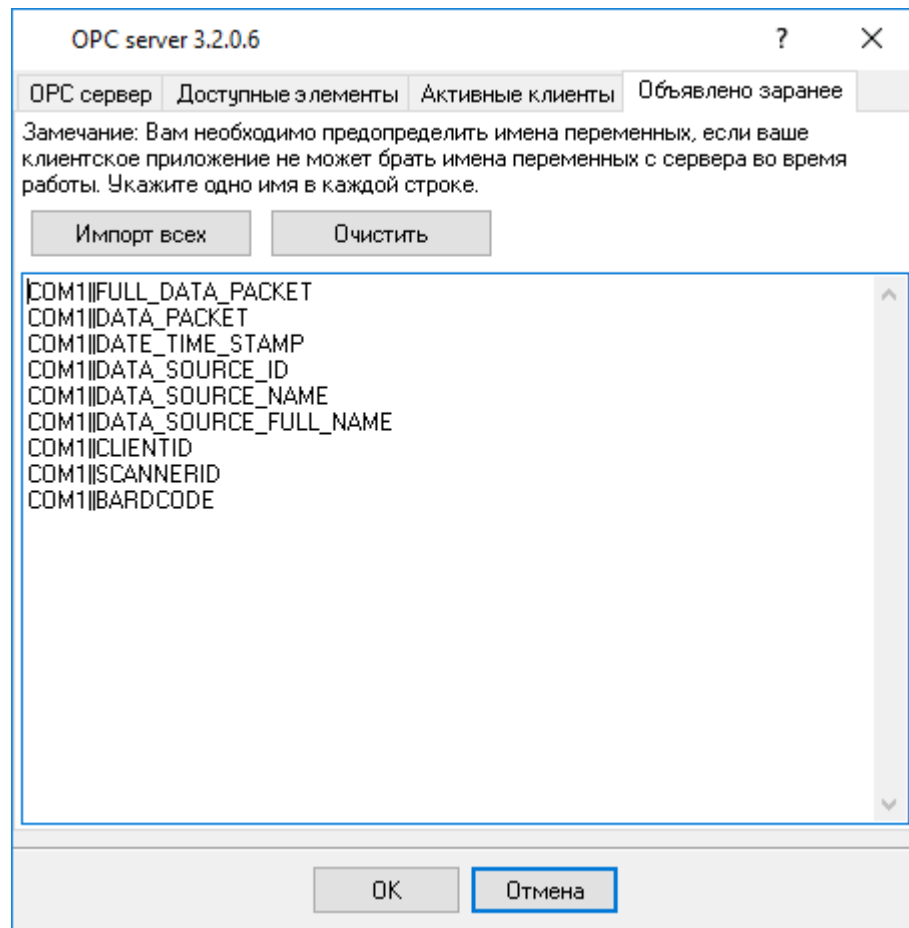
"

". Advanced Serial Data Logger

OPC

(.4).

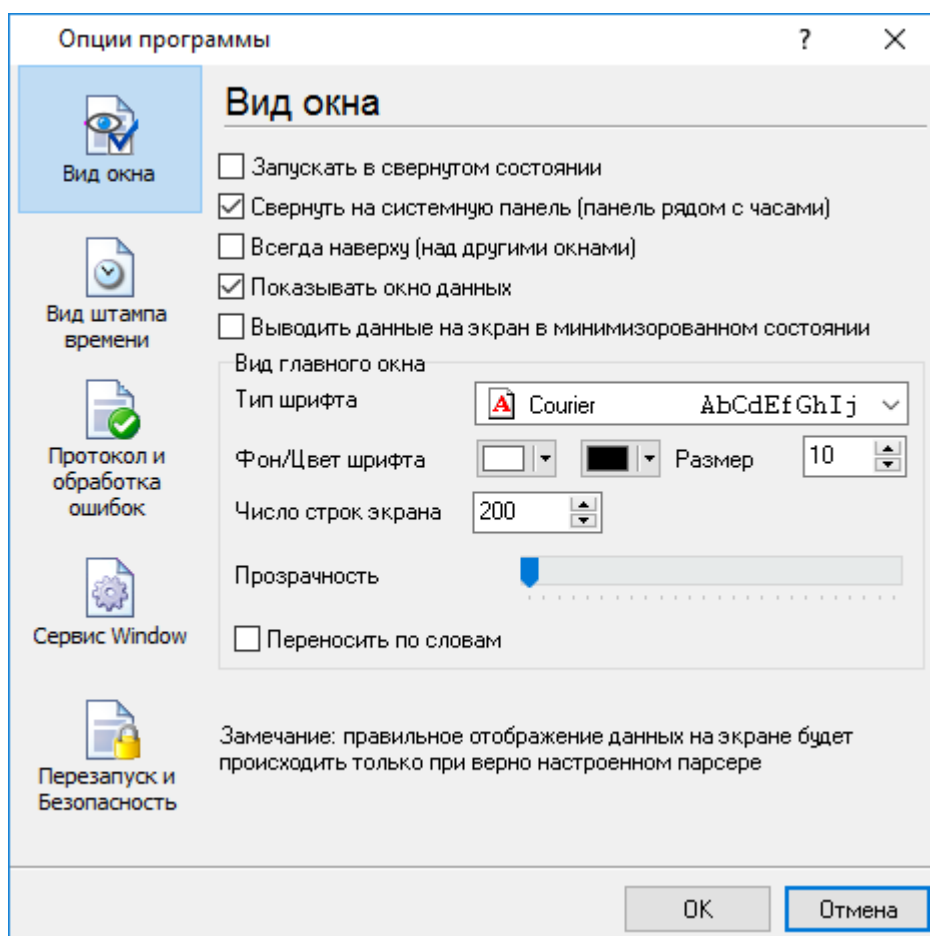
OPC
OPC



. 5.2.4.

5.5

5.5.1

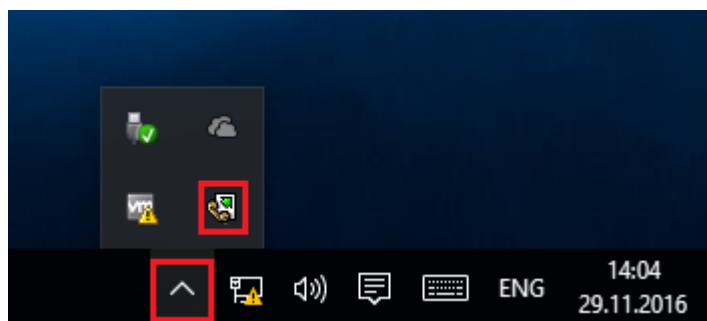


. 6.1.1.

" (. 6.1.1) :

- Advanced Serial Data Logger

(. 6.1.2) ;



. 6.1.2.

-

(. 6.1.2) -

Advanced Serial Data Logger

;

,

-

;

-

/

.

.

-

,

.

;

);

-

(

,

,

-

.

;

- Windows 2000

.

-

,

-

.

-

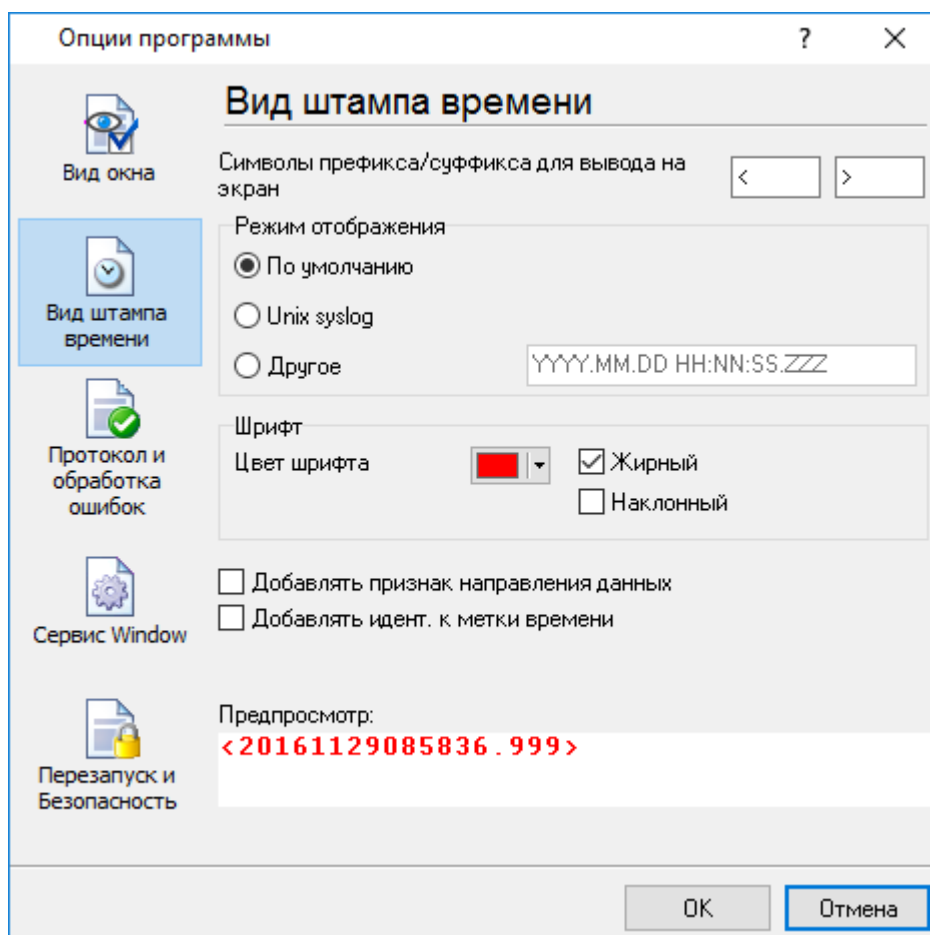
,

.

.

5.5.2

(. 6.2.1)



. 6.2.1.

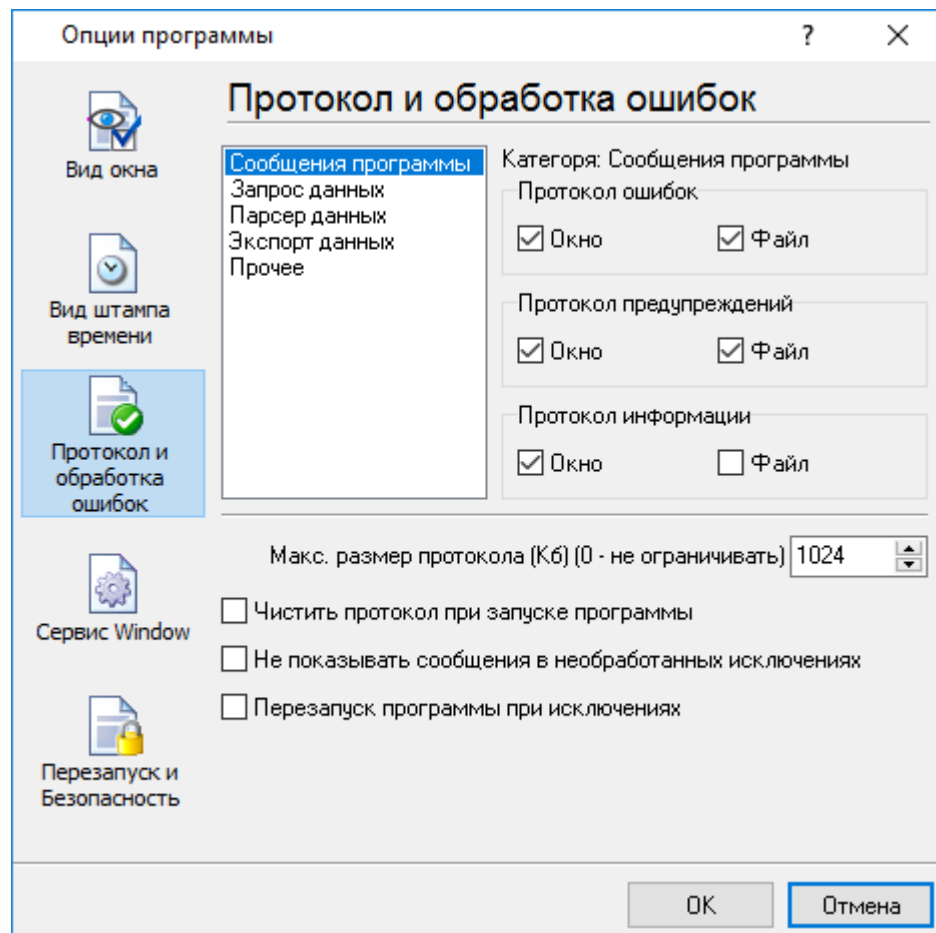
19

TX

RX

, COM1.

5.5.3



. 6.3.1.

Advanced Serial Data Logger

3-

-
-
-

- ; - ,
- - , ;
- - , ;
- - , ;

/

Advanced Serial Data Logger

5.5.4
5.5.4.1

Windows 2000

() Windows :

- (, Windows
- 2000);
- - ();
- ;
- ;

).

(, , , ,

Windows Vista

(elevated)

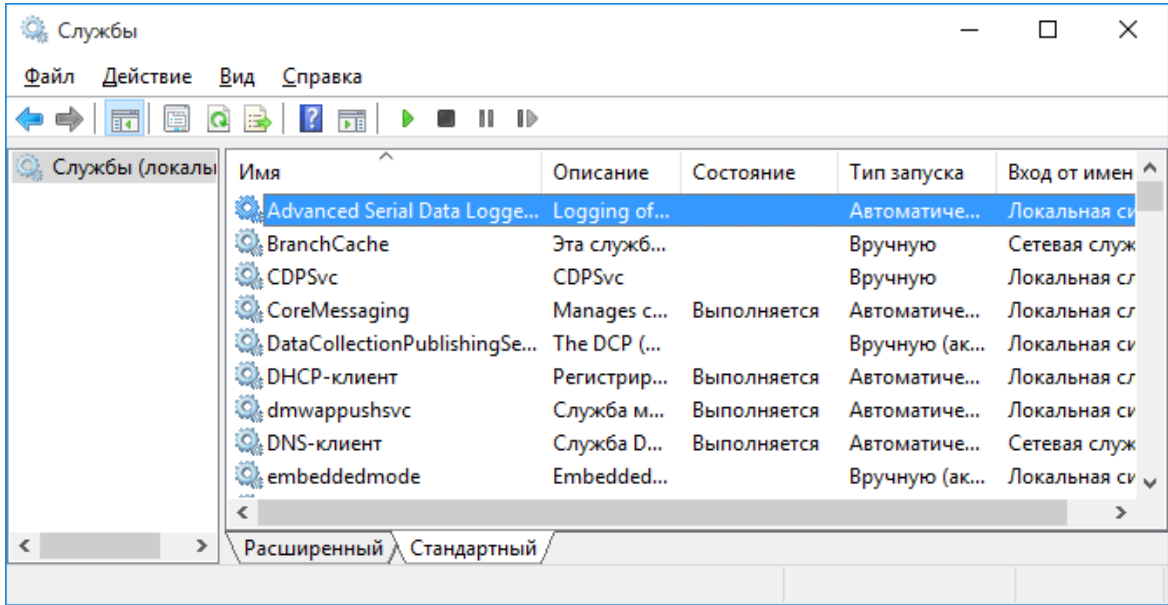
" " " **Windows**" (. 6.4.1).



. 6.4.2

Advanced Serial Data Logger, " ' " (. 6.4.1)

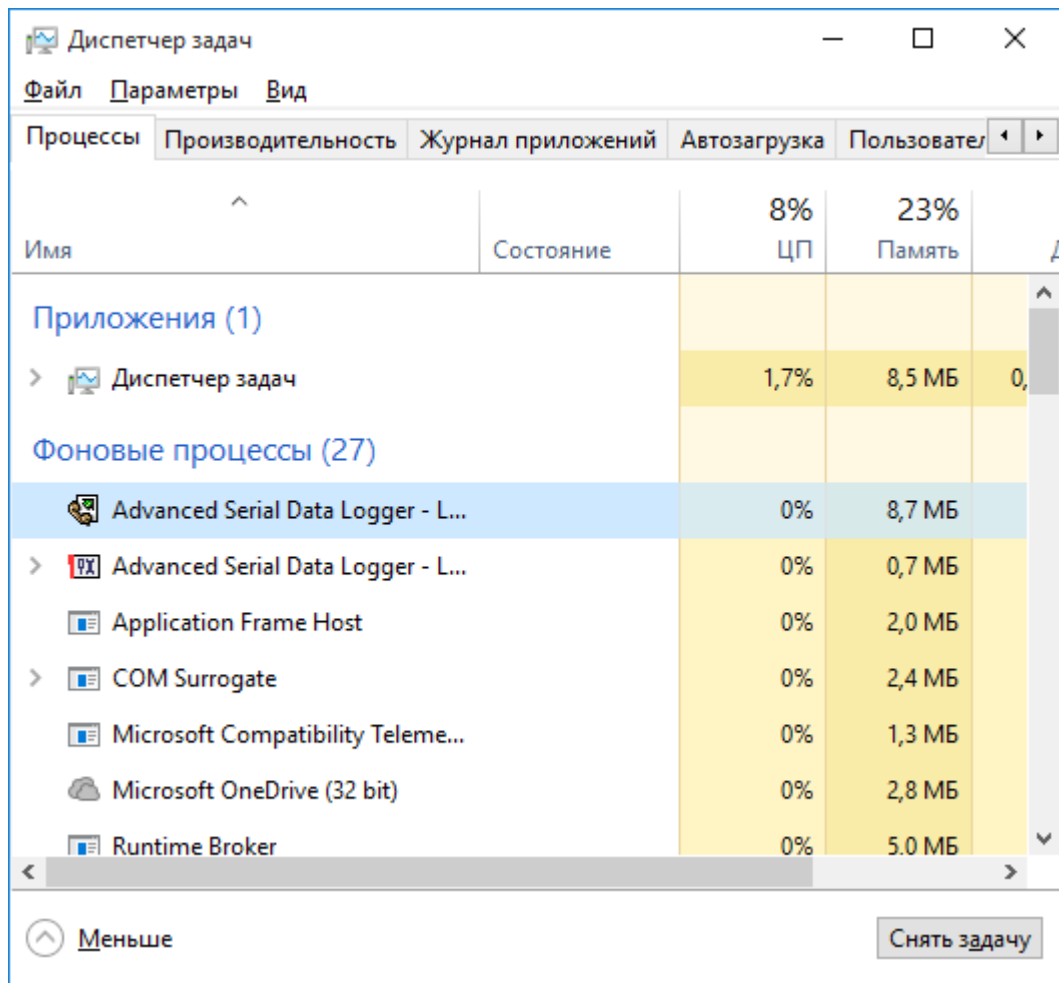
' " " ' (. 6.4.3).



. 6.4.3. (Windows 2000)

(. 6.4.4). 2 - asdlogsrv.exe asdlog.exe

Advanced Serial Data Logger,
svany.exe



. 6.4.4.

asdlogsrv.exe :

- /? - ;
- /I - ;
- /A - ;
- /D - ;
- /R -

5.5.4.2

Windows Vista

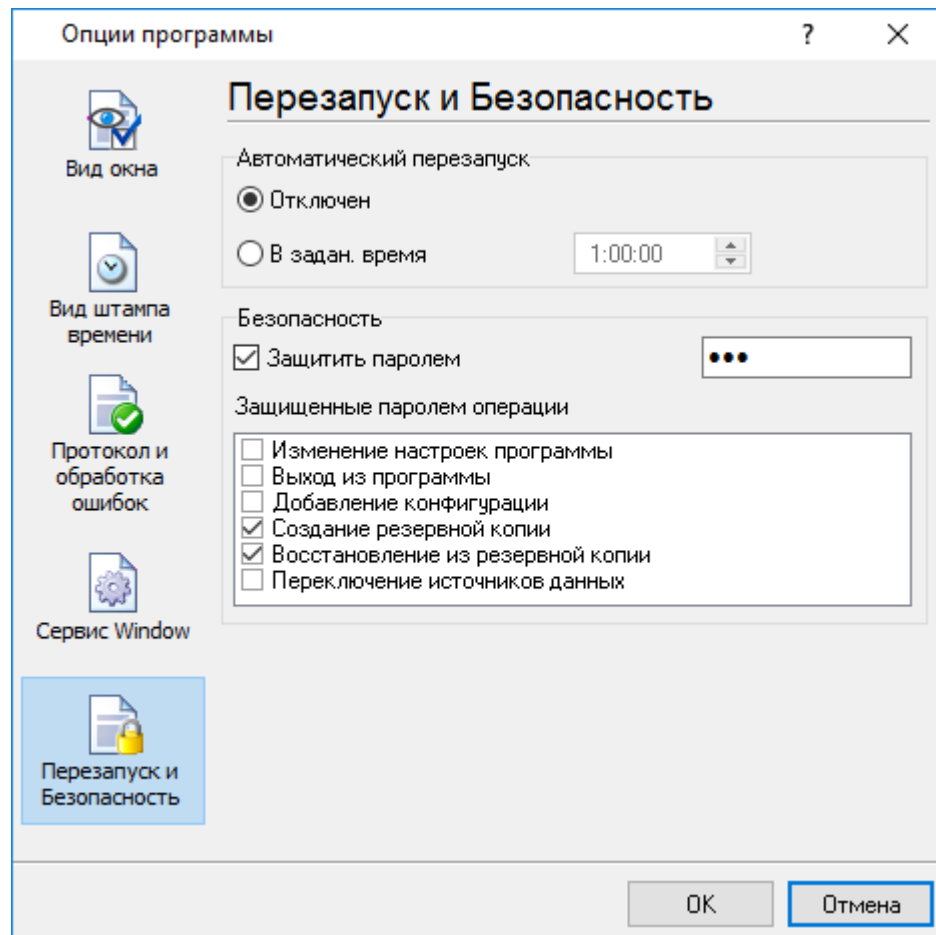
Windows Vista

Windows.

- : Interactive Services Detection
- : UIODetect
- : UIODetect.exe
- :
- : %windir%\system32\UIODetect.exe
- :
- * Home Basic:
- * Home Premium:
- * Business:
- * Enterprise:
- * Ultimate:

5.5.5

(. 6.5.1).



. 6.5.1.

7

?

7.1

SoftIce

support@aggsoft.ru.

7.2

(FAQ)

: COM- ?
 : , - ().
 DOS : , .
 : ?
 : , (DOS
 : DOS).
 : ,
 : COM .

: 9
 ?
 : , Windows .

: : DB25 DB9?
 : DB25 - COM2, DB9 - COM1

: - ?
 : . :



: DTR . . ,
 : DB9 , DB25. 7 8

<http://www.aggsoft.ru>

: ?
 : COM- , , , ,