



## Serial Printer Logger

<b>1</b>		<b>1</b>
1	Serial Printer Logger .....	1
2	.....	2
<b>2</b>		<b>4</b>
1	.....	4
2	.....	5
3	.....	5
4	.....	6
<b>3</b>		<b>6</b>
1	.....	6
2	.....	6
<b>4</b>		<b>7</b>
1	.....	7
2	.....	8
3	.....	10
4	.....	11
5	.....	11
<b>5</b>		<b>12</b>
1	.....	12
	(COM) .....	12
2	.....	17
	TCP/IP .....	17
3	.....	24
	.....	24
	.....	25
	.....	27
4	- .....	28
	- .....	28
	- .....	31
	.....	32
	PDF/RTF .....	33
	.....	33
	.....	34
	PDF/RTF logging .....	34
	.....	37
	.....	38

5		40
6		42
		42
		44
		45
	Windows 2000	46
		46
	Windows Vista	49
		50
6	<b>RS-232</b>	<b>0</b>
1	RS-232	0
2	DB9 (9 pin) RS-232	0
3	DB25 (25 pin) RS-232	0
4	RS-232	0
5	RS-232	0
7	?	51
1		51

# 1

## 1.1 Serial Printer Logger

Serial Printer Logger

Adobe PDF MS Word.

ESC/P,

PDF RTF

Serial Printer Logger  
RS232, RS485 Ethernet.

Serial Printer Logger:

- 
- 
- 
- 
- 
- 
- 
- 
- 
- 
- 
- 
- 
- 
- 
- 

ESC/P ESC/P,

bitmap;

Microsoft Word (RTF) Adobe PDF;

Windows 2000+,

x86 x64.

Serial Printer Logger

Windows 2000+,

Serial Printer Logger

Serial Printer Logger -  
(PC),

- 
- 
- 

: <http://www.aggsoft.ru/>  
: <http://www.aggsoft.ru/serial-printer-logger.htm>

## 1.2

**ASCII** - ASCII -  
,  
,  
Windows  
ASCII. ASCII \*.TXT (  
README.TXT).

**Binary File** - ,  
ASCII ( 0 255).

**Bytes** ( ) - ,

**Bit** ( ) - : 0 1. 8  
8 ( ) .

**Baud Rate** - BPS (  
,  
, 2400 bps ( ),  
600 .

**Cable** ( ) - ,

**COM port** - .

4 , IBM IBM-  
COM1, COM2, COM3 COM4.

**Client/Server** ( / ) - ,  
( , , . . )  
( ) .

**Data bits** - ( ),

**DNS (Domain Name System) - DNS**

( TCP/IP ) IP DNS www.aggsoft.com  
198.63.211.24.

**Flow control -**

" "

**Handshaking -**

**Internet ( ) -** TCP/IP

**IP, Internet Protocol ( ) - Internet Protocol,**

TCP/IP, IP IP ,  
'xx.xx.xx.xx'.

**IP ( Internet Protocol) -** TCP/IP.

IP , IP  
IP : 198.63.211.24.

**LAN (Local Area Network) -**

**NIC, Network Interface Card ( ) -**

nuBus, .) ( , 10baseFL). (PCI, turbochannel,

**PC ( ) -** Personal Computer ( ).

**Ports ( ) -**

**Protocol ( ) -**

**RS232, RS423, RS422 RS485 -** Electronics Industry Association (EIA)

RS232, RS423, RS422, RS485,  
EIA "RS" , ,  
(recommended standard).  
"EIA".

Stop bits ( ) -  
1 2.

TCP/IP, Transport Control Protocol / Internet Protocol - TCP IP

TCP/IP  
Internet.

(Log file) - ( .log) —

## 2

### 2.1

Copyright © 1999-2019 AGG Software.  
All Rights Reserved

1. Serial Printer Logger -

2.

3. Serial Printer Logger ,

4.

5. Serial Printer Logger  
sales@aggsoft.ru

6. Serial Printer Logger ,

Serial Printer Logger

7. Serial Printer Logger

"AS IS".

8.

9.

10.

Serial Printer Logger  
Serial Printer Logger.

## 2.2

shareware-

5

- 
- 
- 

21

100

## 2.3

shareware-

4

Internet,



## 2.4

Serial Printer Logger	<a href="mailto:support@aggsoft.ru">support@aggsoft.ru</a>
	<a href="mailto:support@aggsoft.ru">support@aggsoft.ru</a>
	<a href="mailto:sales@aggsoft.ru">sales@aggsoft.ru</a>

## 3

### 3.1

- Windows 2000 SP 4 - Windows 10 (x86 x64, ).

COM-

### 3.2

Serial Printer Logger.

Logger" , Serial Printer Logger "\Programs Files\Serial Printer

Serial Printer Logger

## 4

## 4.1

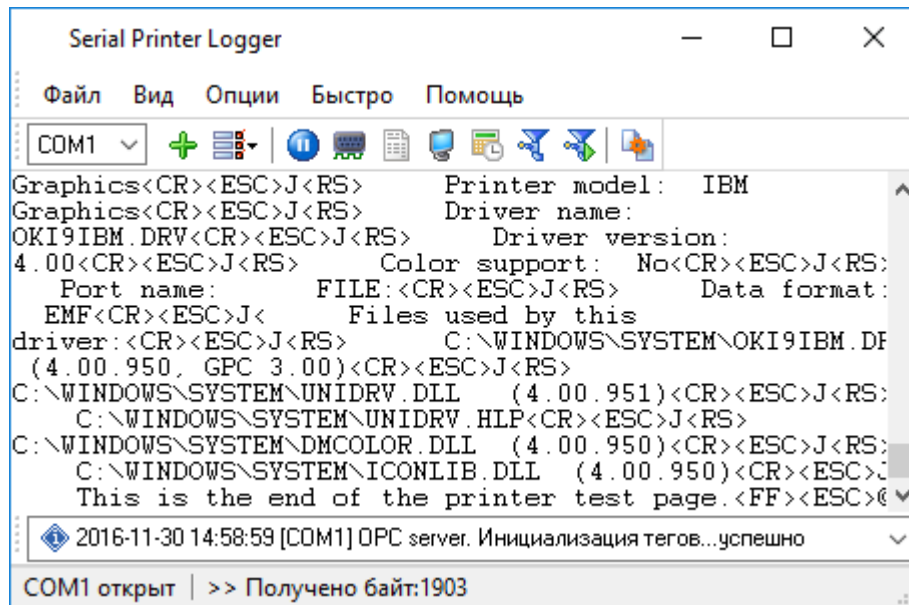
## Serial Printer Logger

Serial Printer Logger

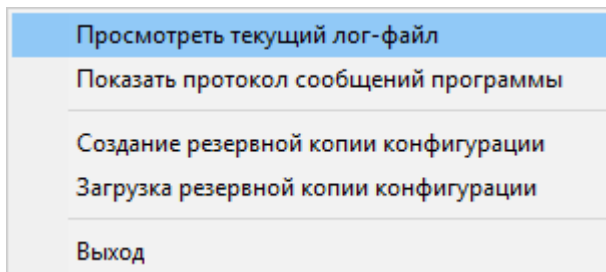
" "

(. 1.1.1),

1.1.2)



. 1.1.1.



. 1.1.2.

" "

C:\. 

**1-2-3-4**

**1.**

" "  " COM "

**2.**

( ).  
" " (

**3.**

" " 

**4.**

Serial Printer Logger

Serial Printer Logger

**4.2**

- RS-232 (
- RS-485 ); "
- " ( - ),
- ;
- COM - ;

\_\_\_\_\_ [12]".

(NIC).

- Serial Printer Logger IP (NIC),  
Serial Printer Logger IP ;
- Serial Printer Logger DHCP, IP ;
- IP 0.0.0.0.

"\_\_\_\_\_ TCP/IP [17]".

\_\_\_\_\_ [28]

\_\_\_\_\_ [31]

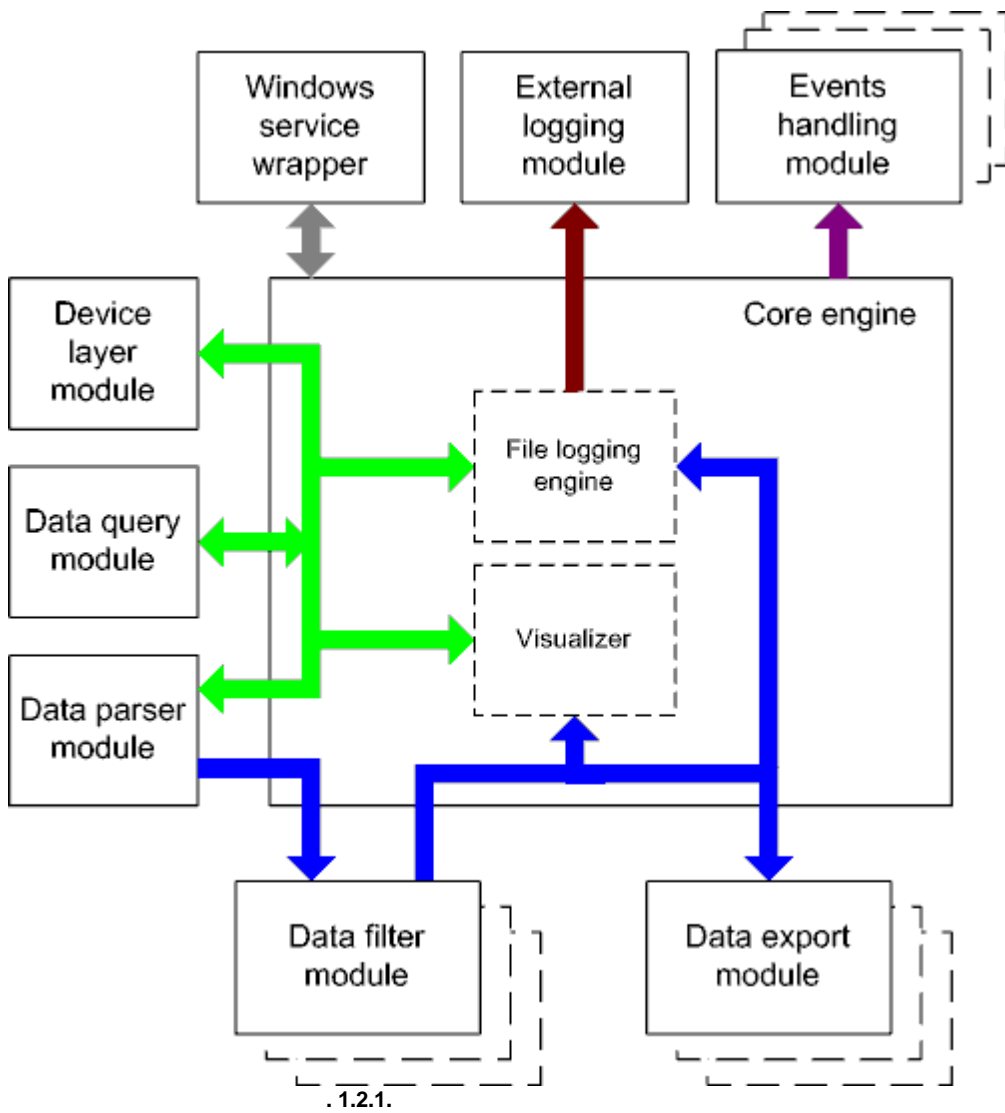
(. . 1.1.1 [7]).

Serial Printer Logger "\_\_\_\_\_ [24]", \_\_\_\_\_ [42].

Printer Logger \_\_\_\_\_ [40] (plug-ins),  
Serial Printer Logger. Serial  
"\_\_\_\_\_ [40]".

\_\_\_\_\_ [45] ( (. . 1.1.1 [7]) \_\_\_\_\_

4.3



- - ( )
- - ( )

- Core engine -
- Device layer module -
- Data query module -
- Data parser module -
- Data filter module -
- Data export module -
- Visualizer -
- File logging engine -
- Windows service wrapper -
- External logging module -
- Events handling module -

## 4.4

Windows. / COM-

## 4.5

1.

2.

1.

2.

regedit.exe

Windows x64

HKEY\_LOCAL\_MACHINE\SOFTWARE\Wow6432Node\AGG Software\Serial Printer Logger

Windows x32

HKEY\_LOCAL\_MACHINE\SOFTWARE\AGG Software\Serial Printer Logger

3.

Ctrl+S -

Ctrl+D -

Ctrl+P -

Ctrl+L -

log- ;

Ctrl+R -  
Ctrl+E -  
Ctrl+M -

Windows;

4.

5.

INI

6.

10

## 5

### 5.1

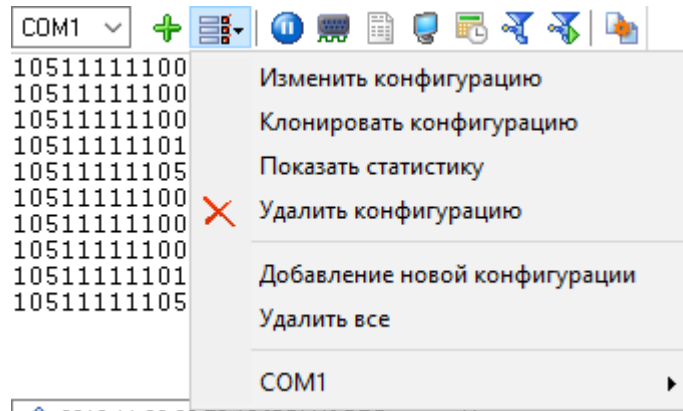
#### 5.1.1

#### (COM)

(. . . 1.1.1 [7])

(. . . 2.1.2).  
COM

(. . . 2.1.1).



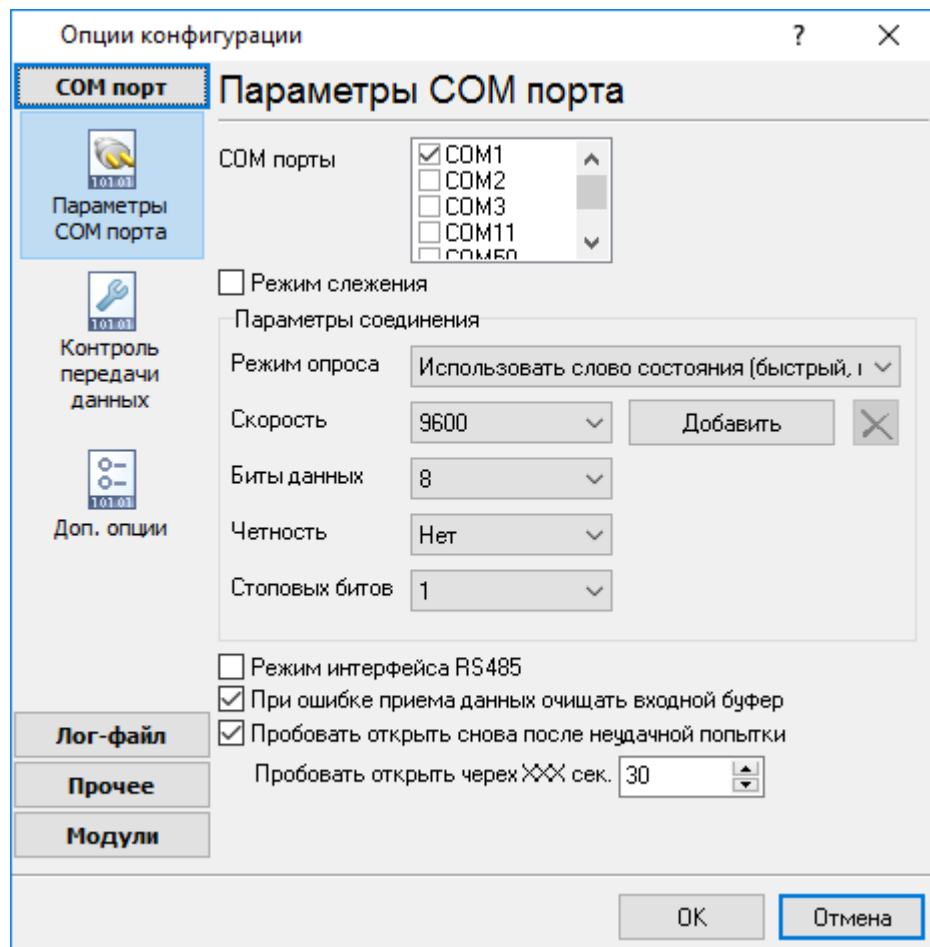
. 2.1.1.

COM-

COM-

COM-

(. . . 2.1.1).



. 2.1.2. COM-

RS-485

, RTS-

API- Windows  
/ : API-  
Windows.

API,

Windows

API

API -

. Serial Printer



Logger

(WRPI.DRV

Serial Printer Logger

( . 2.1.3).

"

DTR"

90%

10%

DSR"

Windows

(CTS / DSR).

RTS" / "

CTS" / "

RTS CTS  
DTR DSR.

10 % Xoff " " " " " "

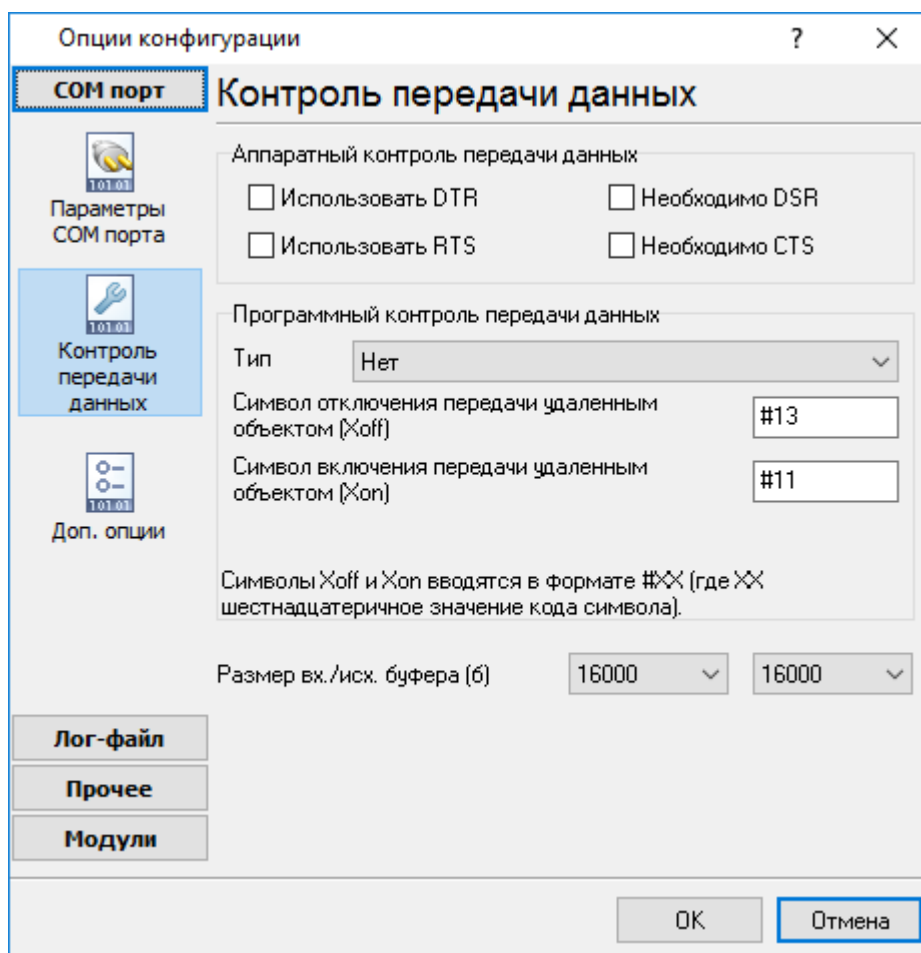
10% Xon.

10% 90% Xoff.

Xon

) ( -

0x13 - COM- 0x11



. 2.1.3

./ . COM

Serial Printer Logger

COM-

COM-

" "

Serial Printer Logger,  
COM-

Printer Logger.

Serial

UART (UART receiver parity error) -

;

UART (UART receiver overrun),  
UART (UART receiver framing error) -

;

CTS (transmit timeout waiting for CTS),  
DSR (transmit timeout waiting for DSR),  
RLSD (transmit timeout waiting for RLSD) -

,

;

(transmit queue is full) - Serial Printer Logger

;

break (break condition received)

Windows NT

" -> "  12

## 5.2

### 5.2.1 TCP/IP

#### UDP TCP

(User Datagram Protocol). TCP

TCP (Transport Control Protocol) UDP

IP. TCP

TCP

, TCP

, UDP

UDP

UDP  
TCP, UDP

IP

TCP, UDP

Messaging, UDP IP Instant

Serial Printer Logger

TCP/IP

1. ( TCP/IP) Serial Printer Logger  
: IP  
TCP/IP, IP  
Serial Printer Logger  
( www.yourserver.com)

2. "Plant1" IP  
Serial Printer Logger IP  
IP ;

Serial Printer Logger  
(NIC),  
IP  
Serial Printer Logger  
Microsoft Windows, TCP/ IP  
IP

Serial Printer Logger "OK"  
TCP/IP.  
IP Serial Printer

Logger

Serial Printer Logger

(.1.1.1[7]).

(.1.1.1[7])

(.2.2.2).

IP"

TCP/IP

" ( .2.2.1).

0.0.0.0:7777

1051111110026#0  
1051111110019#0  
1051111110033#0  
1051111110123#0  
1051111110521#0  
1051111110026#0  
1051111110019#0  
1051111110033#0  
1051111110123#0  
1051111110521#0

- Изменить конфигурацию
- Клонировать конфигурацию
- Показать статистику
- Удалить конфигурацию
- Добавление новой конфигурации
- Удалить все

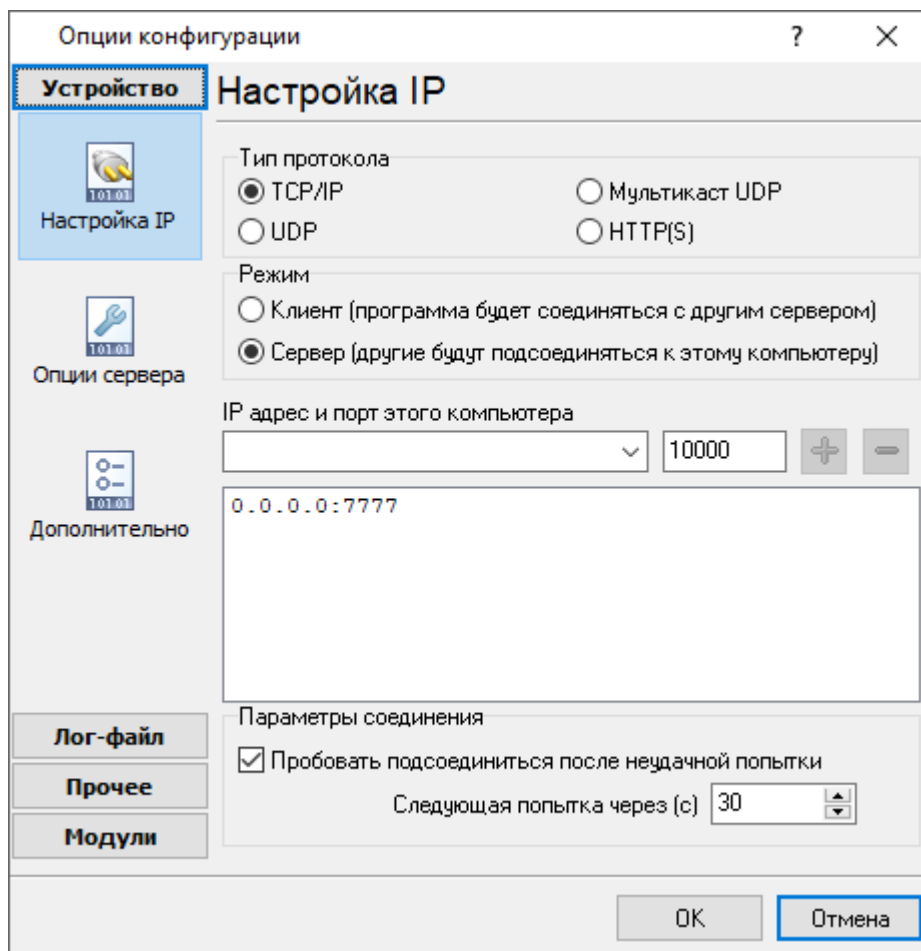
0.0.0.0:7777

.2.2.1.

TCP/IP: IP

IP"

IP



. 2.2.2.

TCP/IP

IP

119, . . .  
SERVICES,  
WINNT\SYSTEM32\DRIVERS\ETC).  
Serial Printer Logger

SMTP - 25, the telnet - 23,

NNTP -

Windows ( Windows NT  
SERVICES -

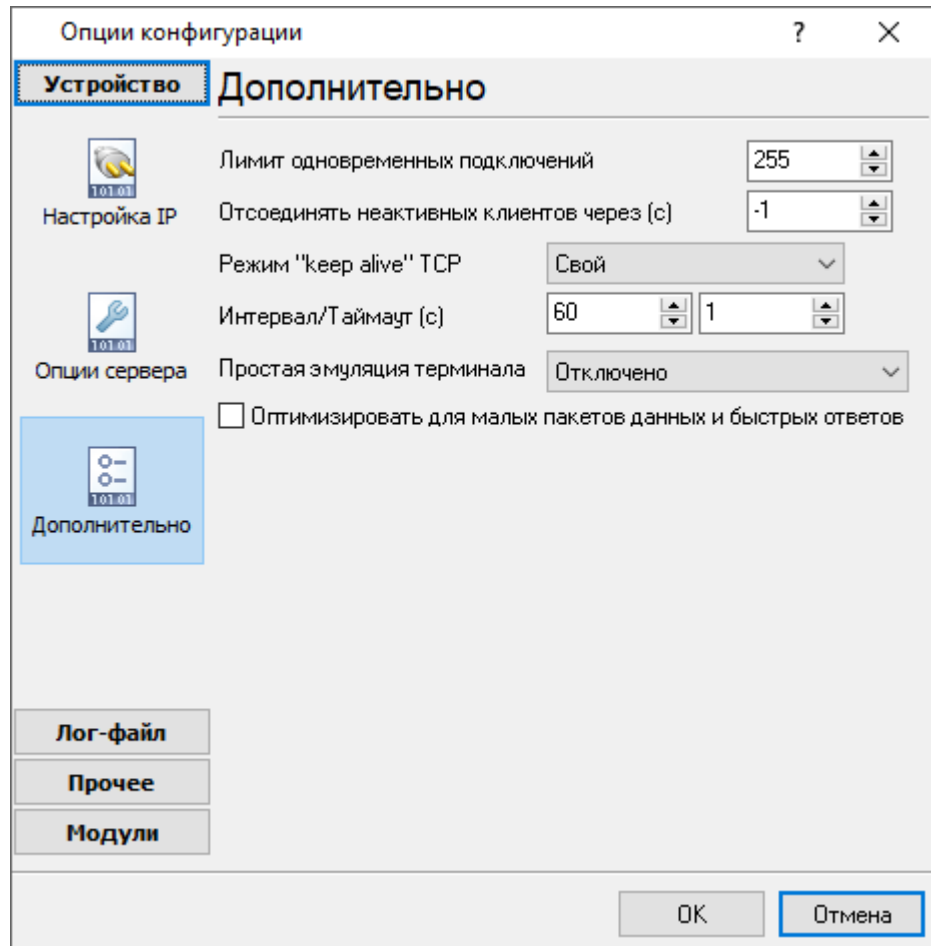
IP

(socket).

,  
 ,  
 , IP  
 ,  
 " " IP  
 ( ).  
 ,  
 ) ( ) ( ( " Serial Printer Logger  
 N , " (c)".  
 IP  
 , IP  
 ,  
 Serial Printer Logger - IP  
 " ".  
**(firewall)**  
 Microsoft Windows XP SP2 , Serial Printer Logger  
 . Windows Firewall,  
 . Windows Firewall ,  
 (Security Alert).  
 :







. 2.2.4.

**TCP/IP**

:

keep-alive TCP ( ) -

Windows.

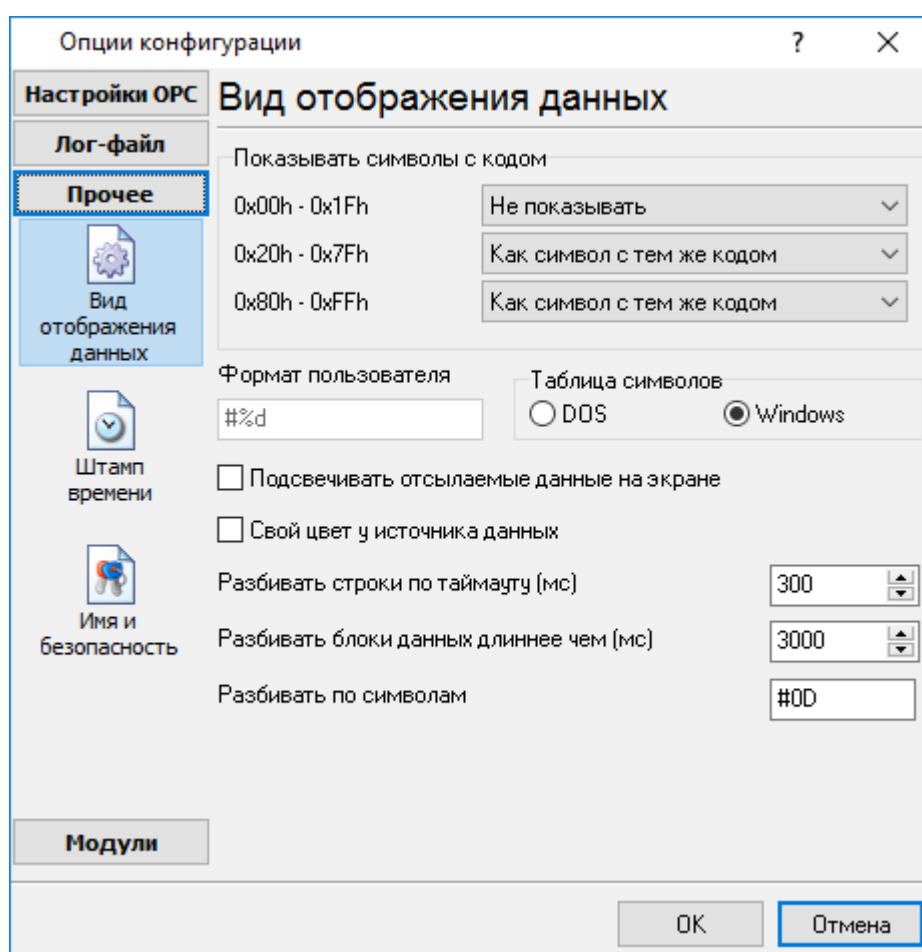
keep-alive

(TCP

UDP):

## 5.3

### 5.3.1



. 3.1.1.

" ( . 3.1.1)

Hex-

%d

, %x -

(OEM).

: Windows DOS

0,

0,

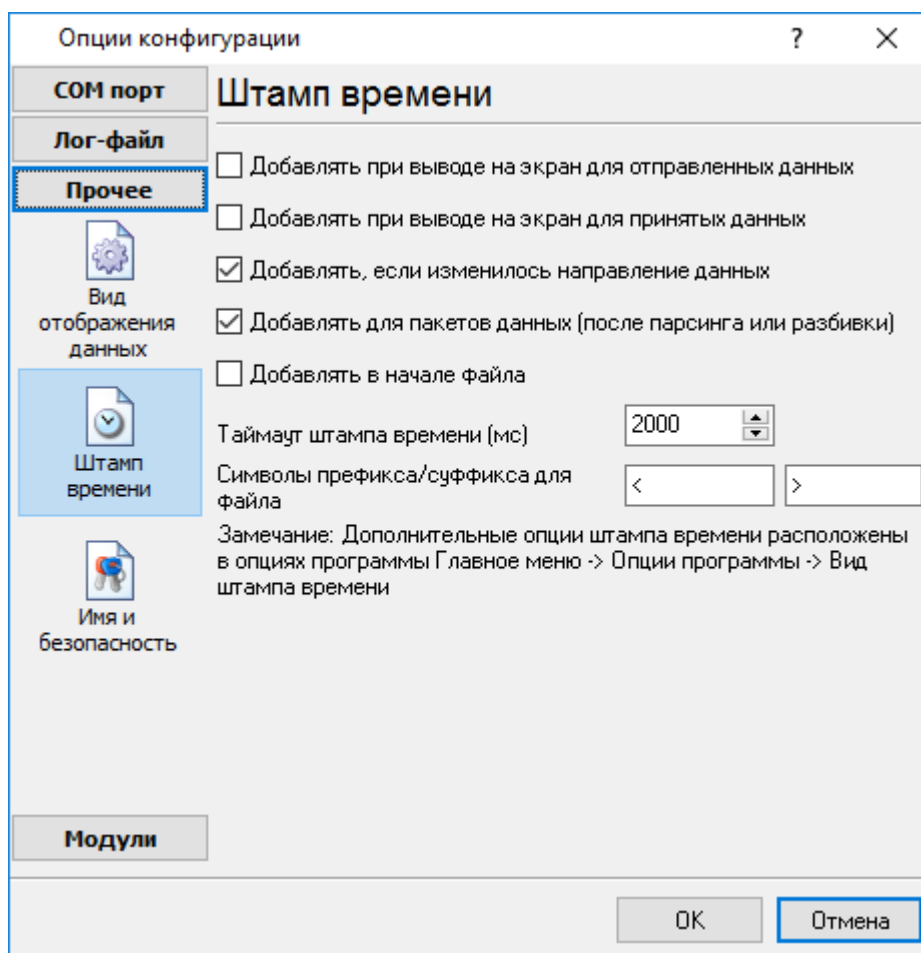
. 3.1.1

### 5.3.2

( . 3.2.1)

( )

44



. 3.2.1.

( )

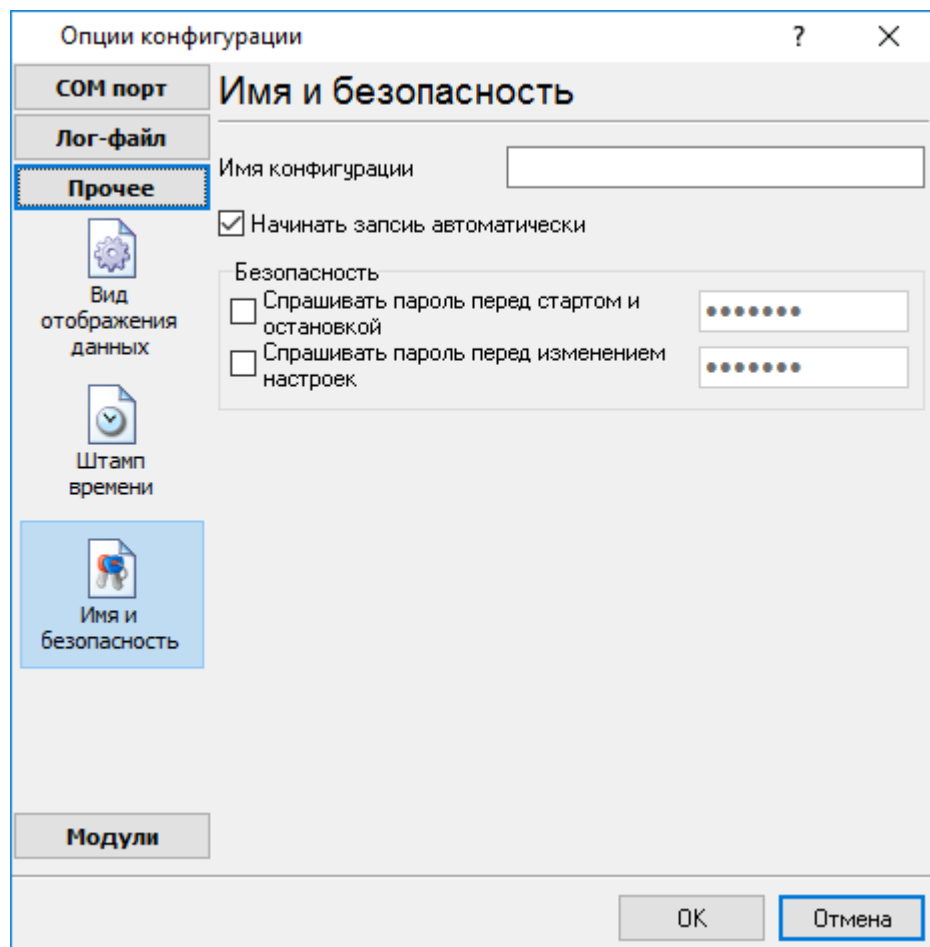
( / ).

44

: >#0D#0A

## 5.3.3

( . 3.3.1)

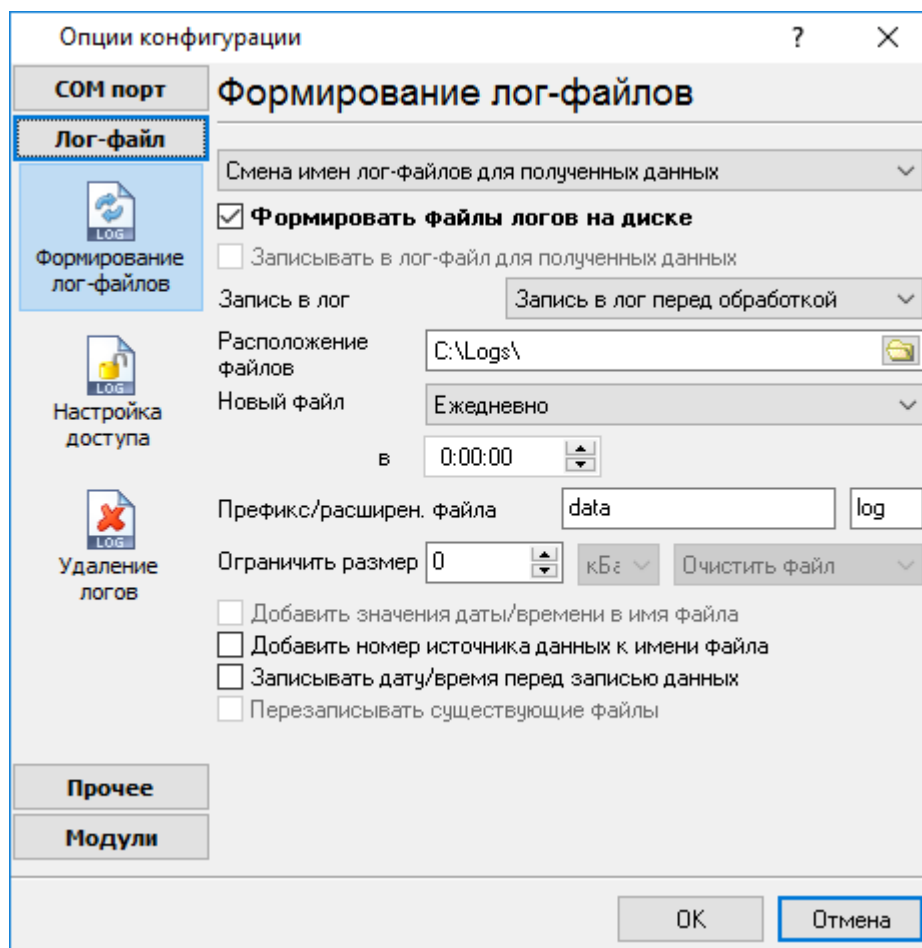


. 3.3.1.

## 5.4

## 5.4.1

(рис. 4.1.1).



4.1.1.

"OK".

Serial Printer Logger

```

• " " "log ", "sample",
• " " " " "sampleYYYYMMDD.log". 21-
2003 "sample20030321.log".
• ( ).

```

1. DDMMYYYY, DD - , MM -  
YYYY - ;
2. MMYYYY;
3. YYYYMMDD;
- 4.

sample00000001.log.

- 5.
6. WWYYYY, WW -  
YYYY -
- 7.
8. HHDDMMYYYY;
- 9.

```

d - (1 - 31);
dd - (01 - 31);
ddd - ( - )

```



```

dddd - ( - )
m - , (1 - 12);
mm - , (01 - 12);
mmm - ( - ) ,
;
mmmm - ( - ) ,
;
yy - (00 - 99);
yyyy - (0000 - 9999);
h - , (0 - 23);
hh - , (00 - 23);
n - , (0 - 59);
nn - , (00 - 59);
s - , (0 - 59);
ss - , (00-59).

```

```

: "sample_log", "txt".
: = sample_log_, = txt ( !).
HHDDMMYYYY.

```

4 7 /

sample20030321.log. , COM1-

/

4 7.

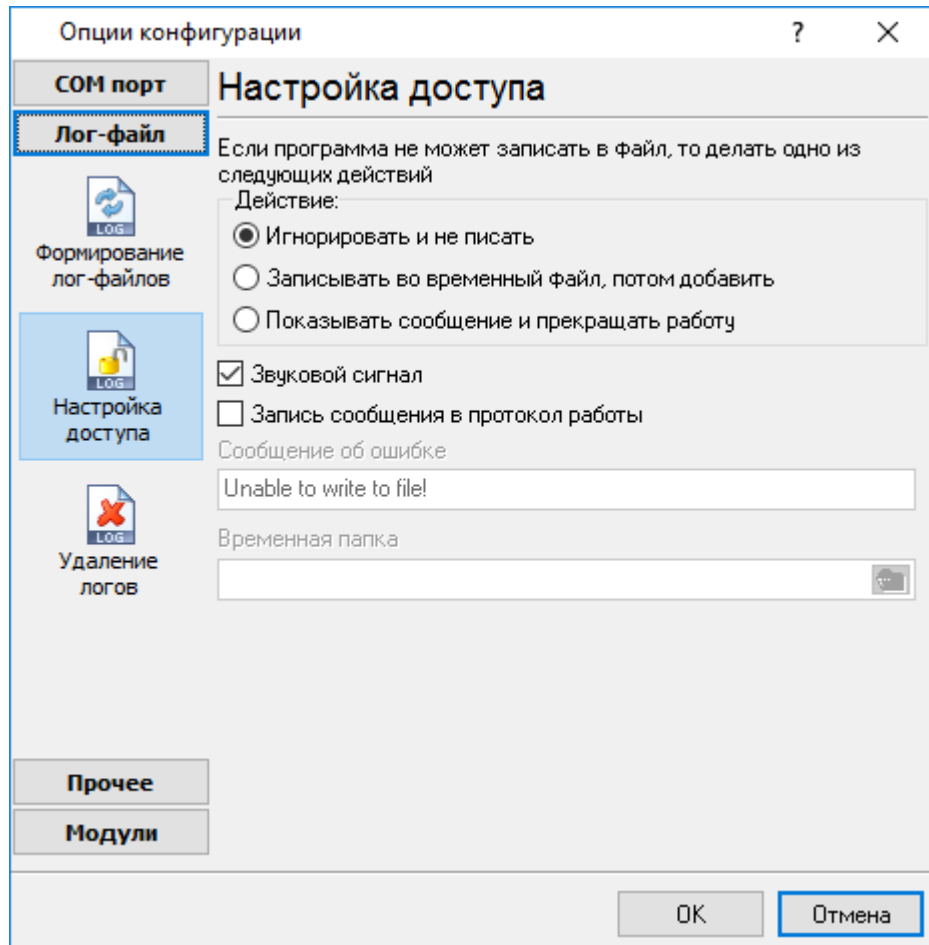
1. - !
2. -
3. ( ) -
4. ( ).

## 5.4.2

Office (Serial Printer  
Logger

, Microsoft Word),

Microsoft  
Serial Printer



. 4.2.1.

Serial Printer Logger

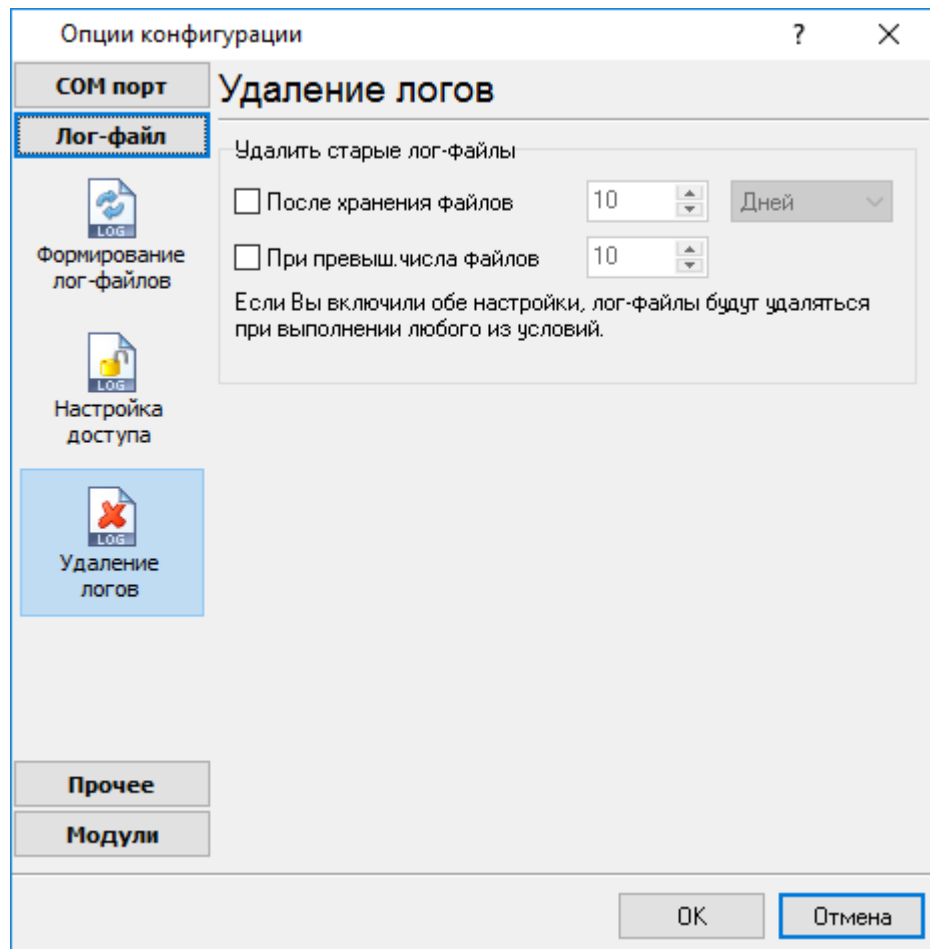
4.2.1),

•

•

5.4.3

( . 4.3.1).



. 4.3.1.

#### 5.4.4

##### 5.4.4.1

### PDF/RTF

"PDF logging" "RTF logging"  
 Adobe PDF Microsoft Word RTF.

, ,

ESC/P

EPSON

ESC/P,

ESC/P 2, EPSON

ESC/P

PDF/RTF

5.4.4.2

PDF/RTF logging

: Windows 2000 SP4 , 32-x 64-x

5 MB

( ), Advanced Serial Data Logger.

**Microsoft Vista** :

Program Files,

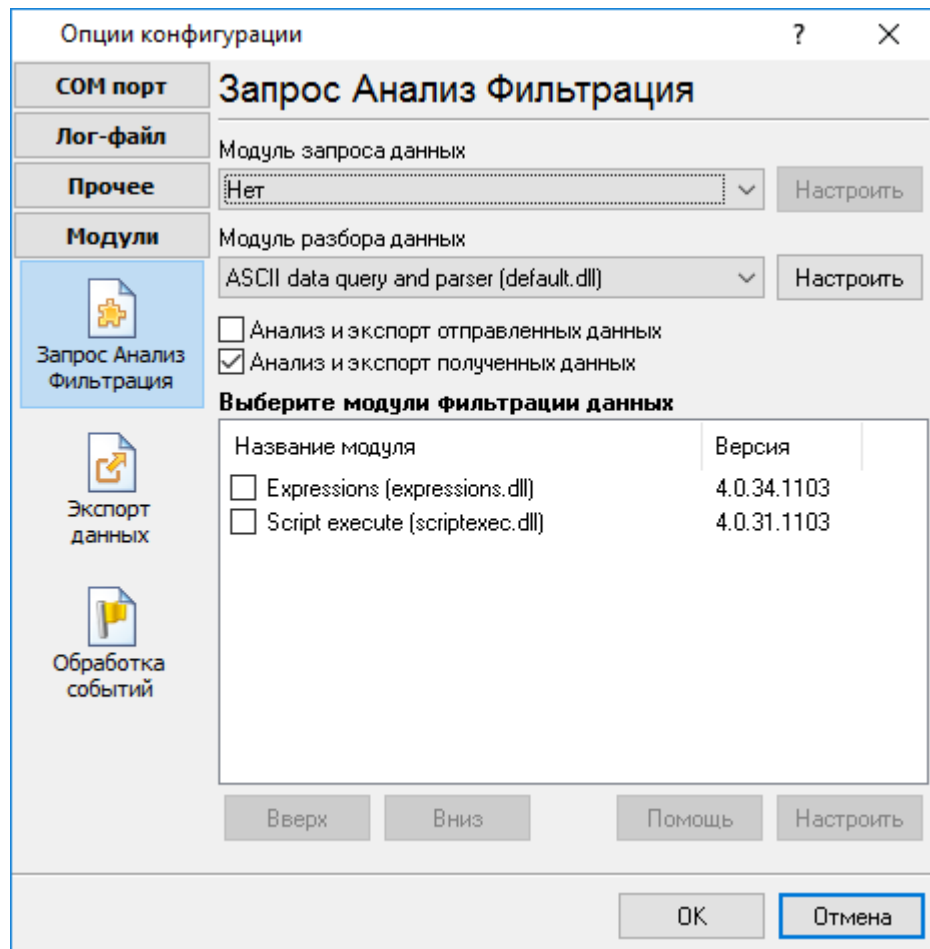
- 1.
- 2.
3. Windows Vista

Google.

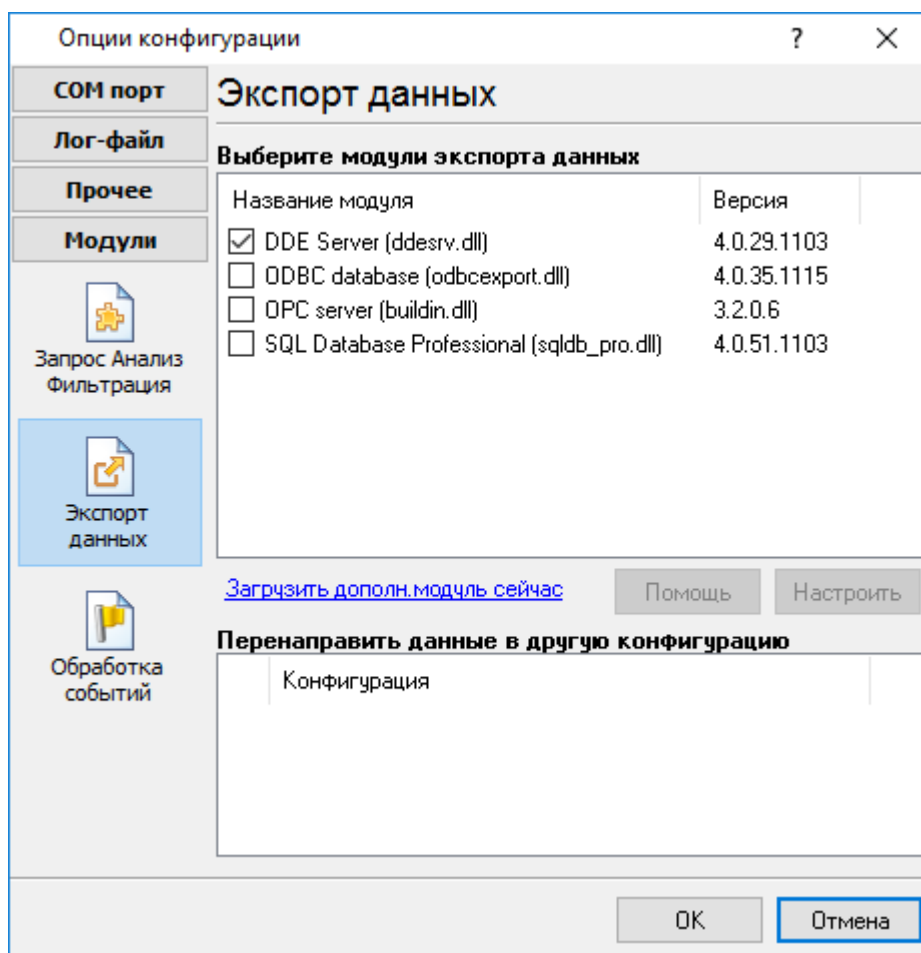
5.4.4.3

PDF/RTF logging

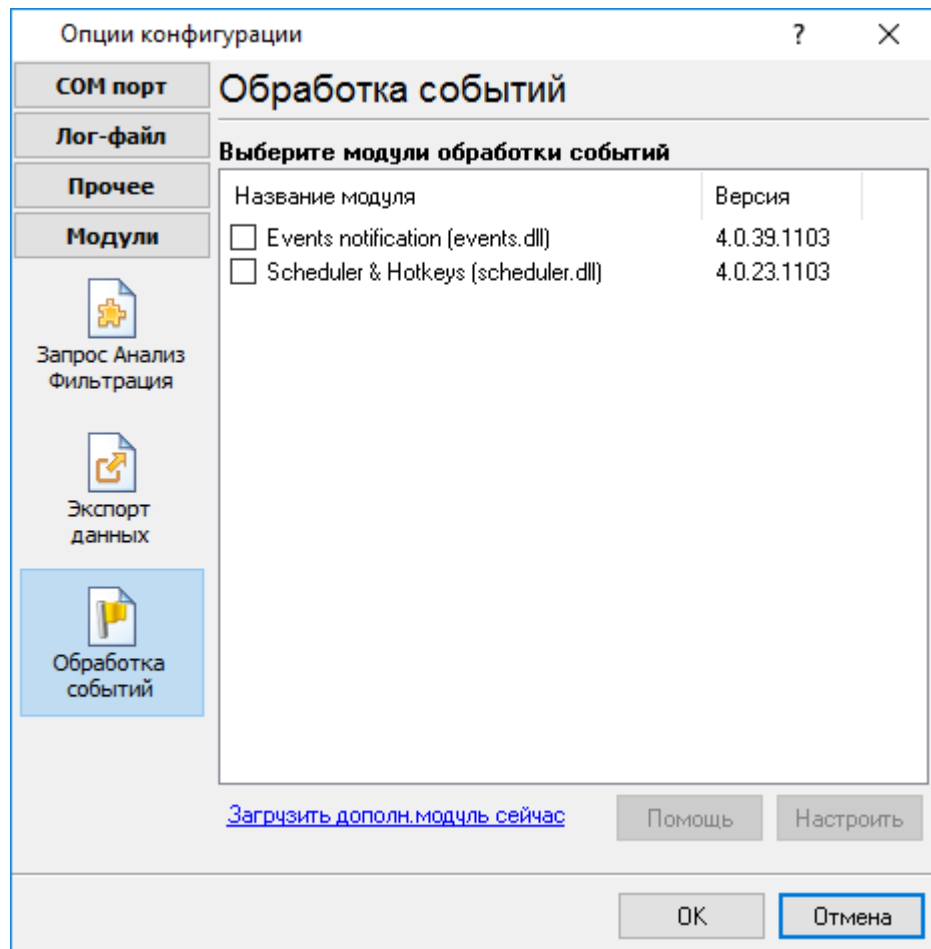
1. ( , Advanced Serial Data Logger),
  2. ;
  3. ,
  4. Windows;
  5. " " ;
- " - " "
- .1-2.



.1.



.1.



.1.

#### 5.4.4.4

#### Plug-in -

Advanced Serial Data Logger



( .1):

- ESC/P -
- LQ - ( ). LQ. LQ
- / ;
- - ;
- Courier.
- - " Fixedsys, Courier; ESC/P",
- ; ESC/P
- - ;
- , ESC/P;
- - ;
- ( <TAB> ASCII) ESC/P.

Параметры документа

Добавлять перевод строки после возврата каретки

Добавлять возврат каретки после перевода строки

Декодировать управляющие коды ESC/P

Режим LQ

Новый файл при команде Прогон Страницы

Новый файл при команде Извлечение Страницы

Параметры бумаги Letter 8 1/2 x 11 in

Размер бумаги (мм) Ш 210 В 295

Ориентация страницы Портретная

Тип шрифта и размер MS Sans Serif 8

Набор символов ANSI  Embedded font

Цвет шрифта/страницы

Стиль шрифта

Жирный  Наклонный  Перенос слов

Размер табуляции 4

Инициал-ть

Время ожидания

Закреть файл (мс) 3000

Закреть файл

Сбросить (мс) 5000

Сбросить

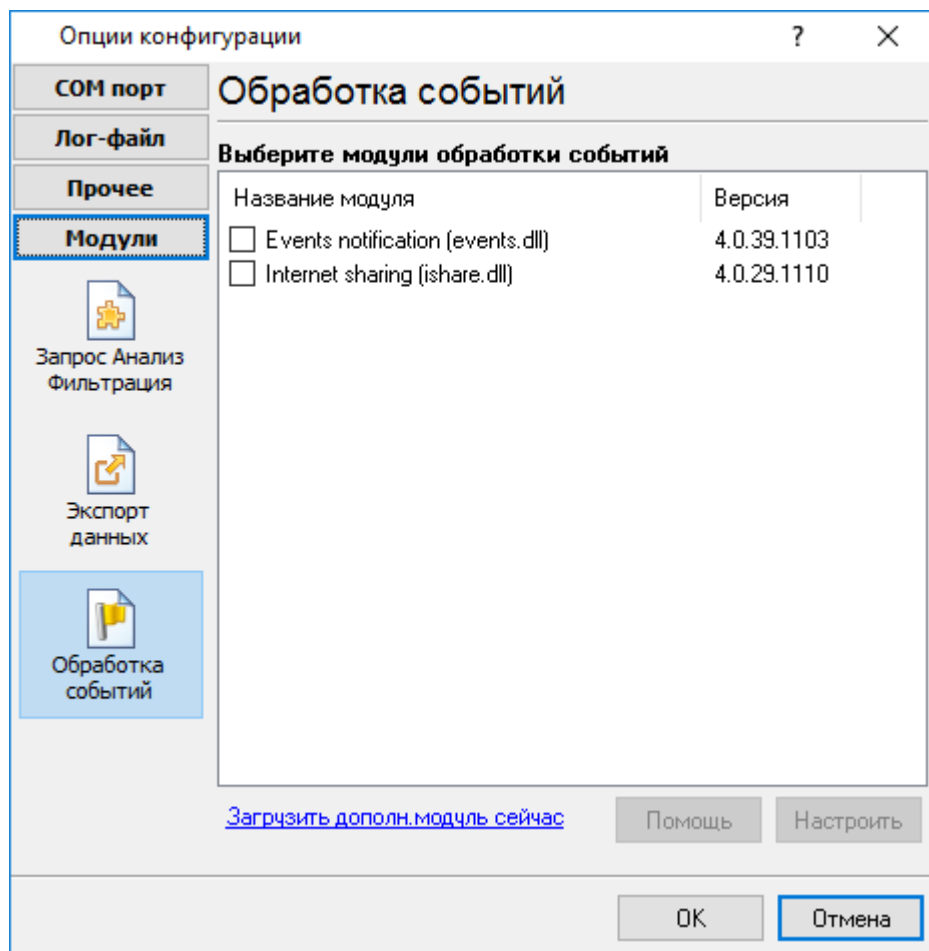
.1

( )

( )-

ESC/P.



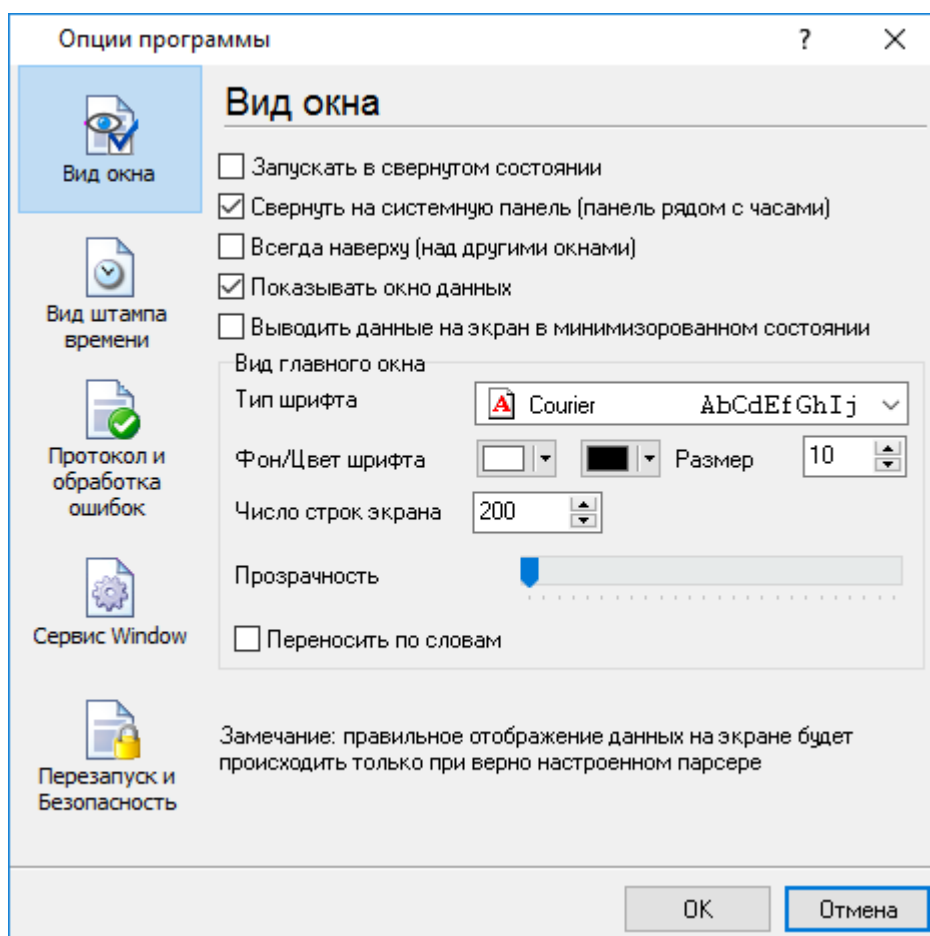


. 5.1.3.

"OK".

## 5.6

## 5.6.1

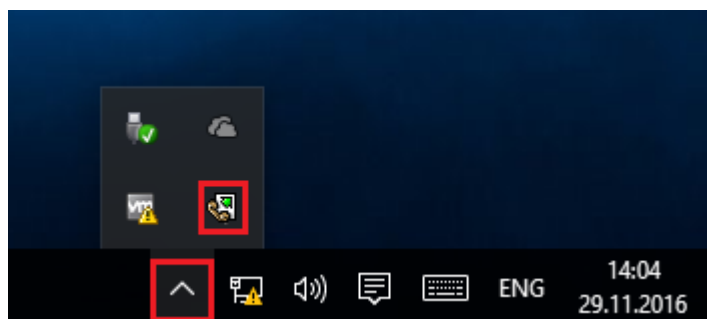


. 6.1.1.

" ( . 6.1.1) :

- Serial Printer Logger

( . 6.1.2) ;



. 6.1.2.

-

( . 6.1.2) -

Serial Printer Logger

;

,

-

;

-

/

.

.

-

.

,

;

);

-

(

,

,

-

.

;

- Windows 2000

.

-

,

-

.

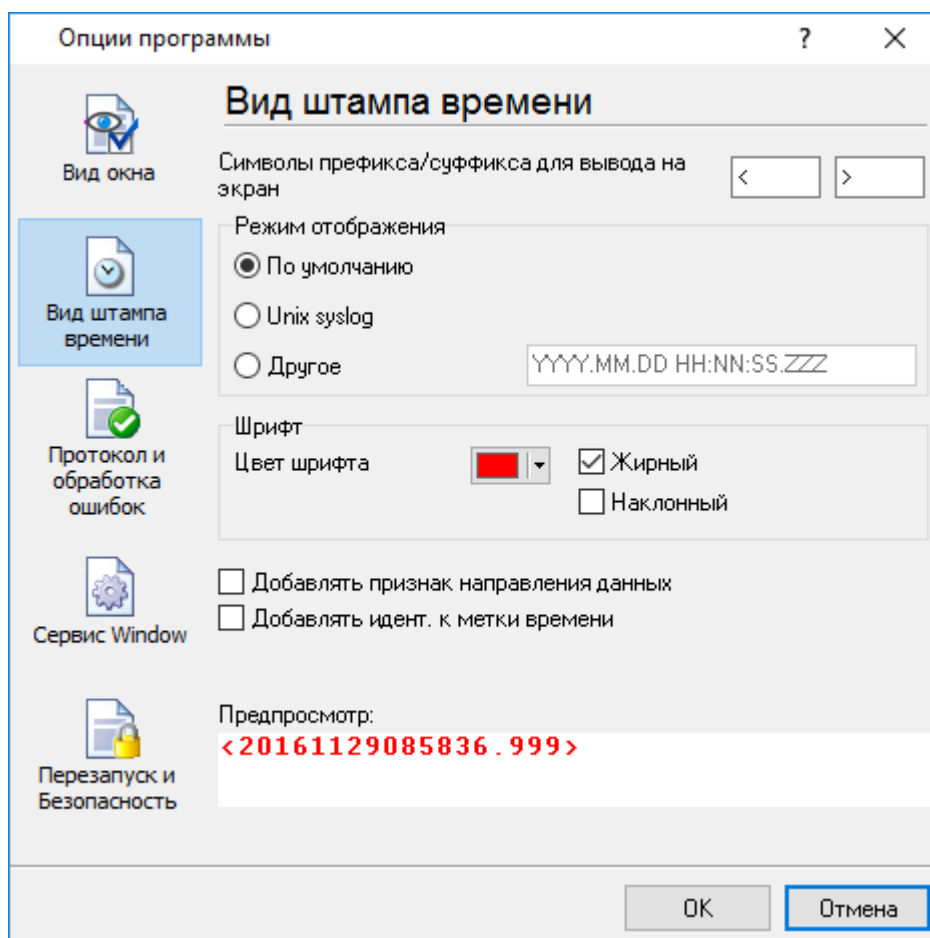
-

,

.

## 5.6.2

( . 6.2.1)



. 6.2.1.

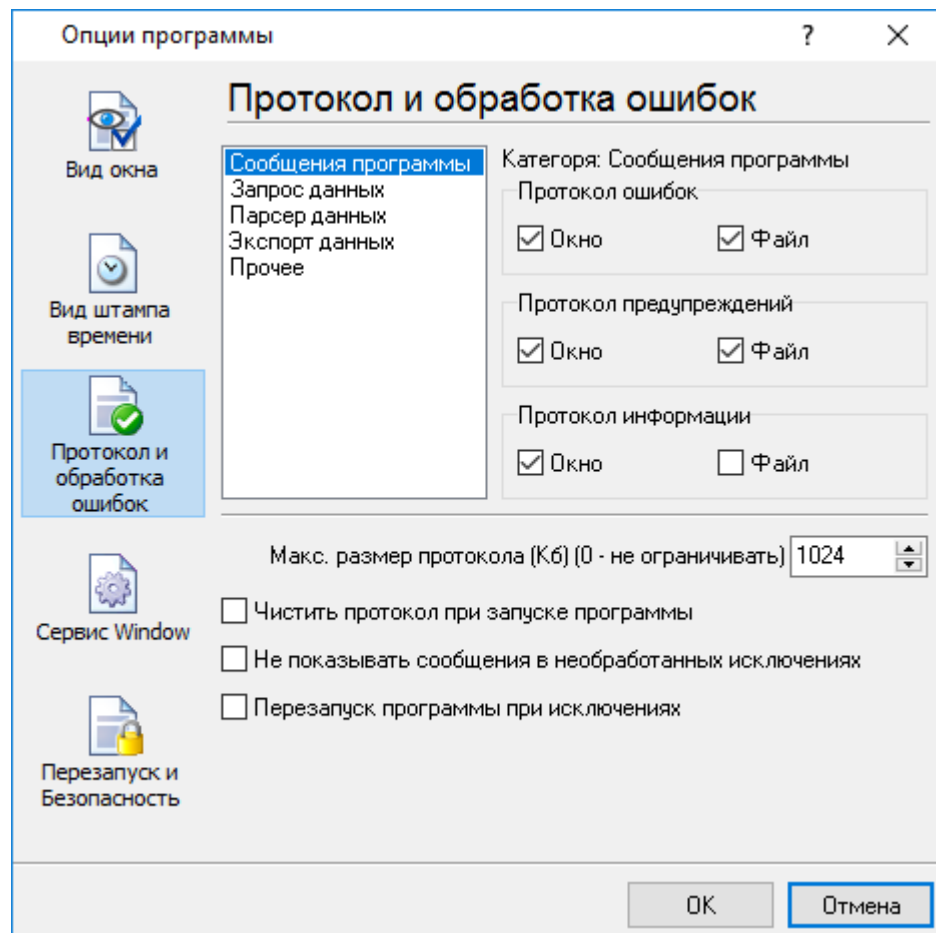
25

TX

RX

, COM1.

## 5.6.3



. 6.3.1.

Serial Printer Logger

3-

- 
- 
-



- ; - ,
- - , ;
- - , ;
- - , ;

/

Serial Printer Logger

**5.6.4**  
**5.6.4.1**

**Windows 2000**

( ) Windows :

- 2000 ); ( , Windows
- - ( );
- ; ,
- ;

).

( , , , ,

*Windows Vista*

(elevated)

" " " **Windows**" ( . 6.4.1).

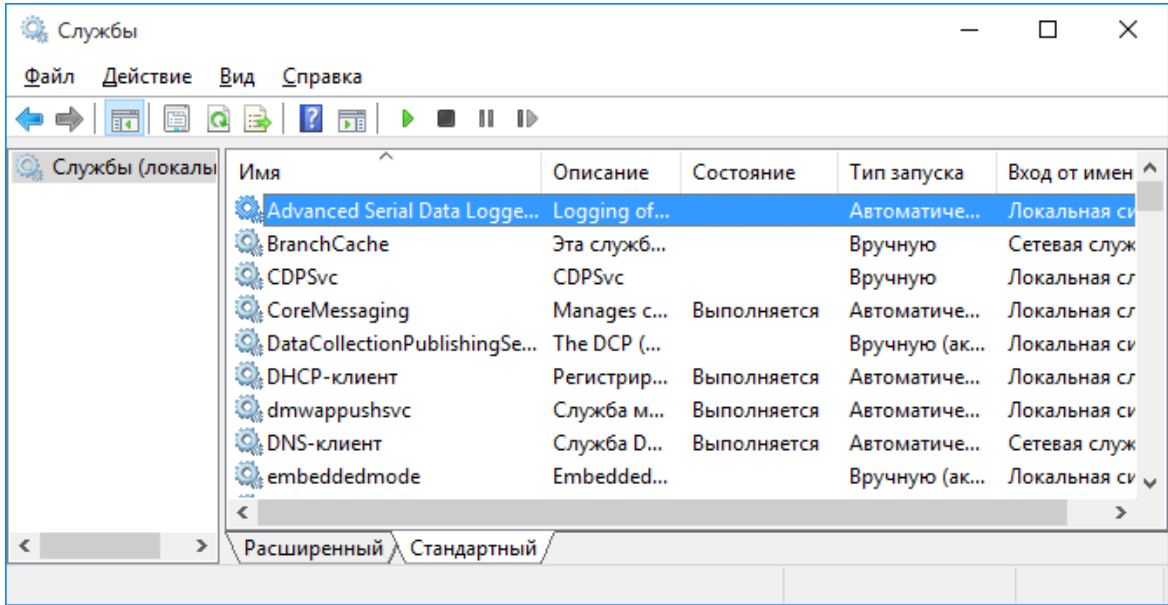




. 6.4.2

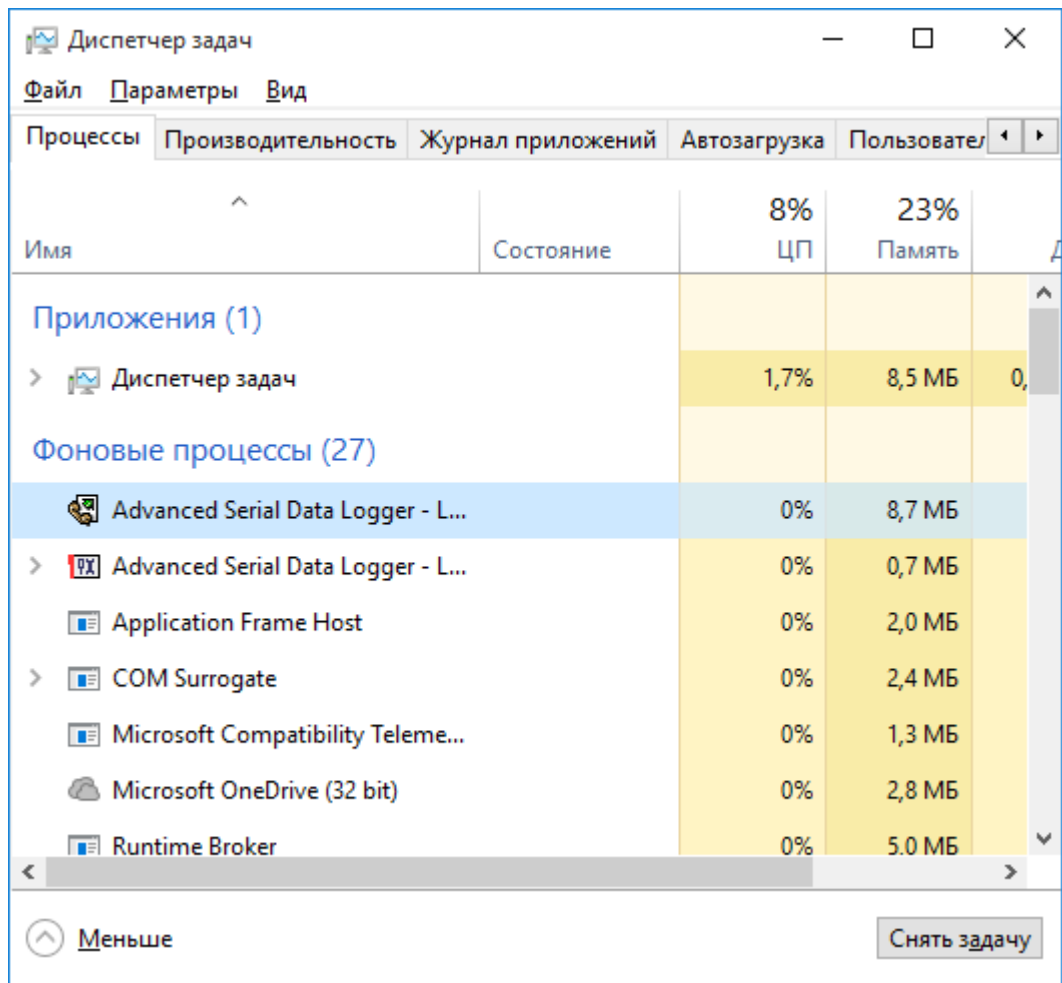
Serial Printer Logger, " ( . 6.4.1)

" " ( . 6.4.3).



. 6.4.3. ( Windows 2000)

sprnlogger.exe ( . 6.4.4).  
 2 - sprnloggersrv.exe  
 Serial Printer Logger  
 Serial Printer Logger,  
 svany.exe



. 6.4.4.

sprnloggersrv.exe :

- /? - ;
- /I - ;
- /A - ;
- /D - ;
- /R -

## 5.6.4.2

## Windows Vista

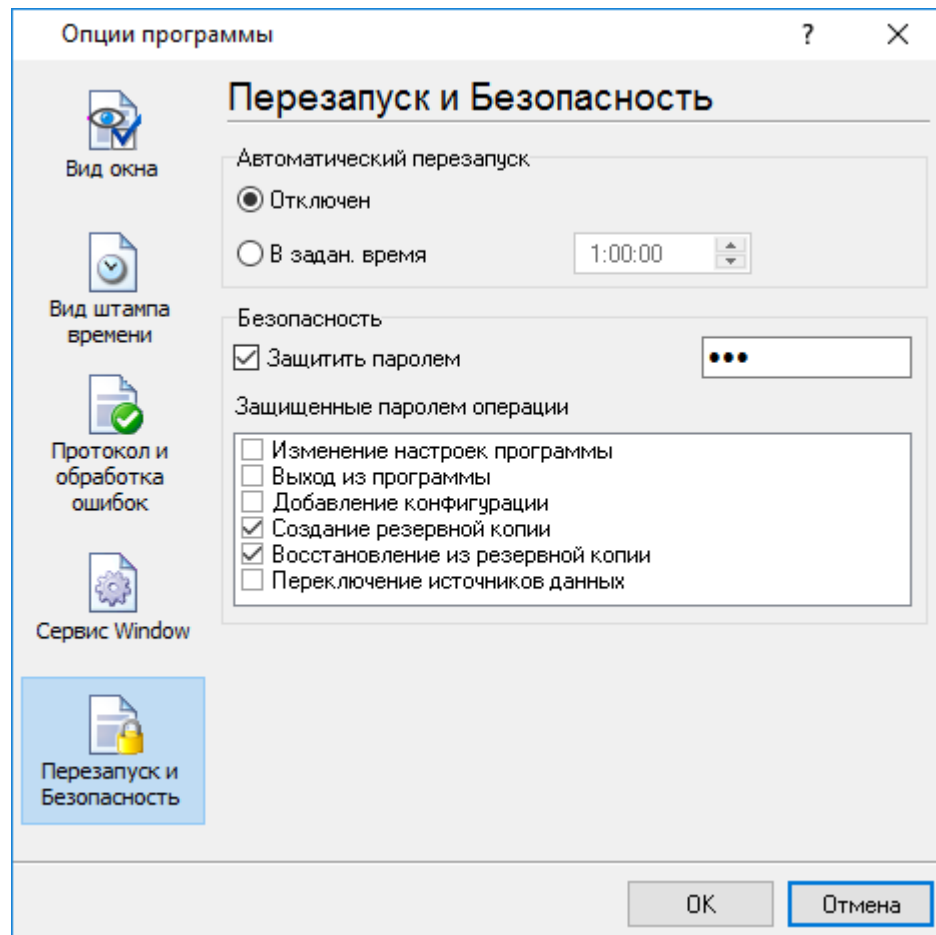
Windows Vista

Windows.

- : Interactive Services Detection
- : UIODetect
- : UIODetect.exe
- :
- : %windir%\system32\UIODetect.exe
- :
- \* Home Basic:
- \* Home Premium:
- \* Business:
- \* Enterprise:
- \* Ultimate:

5.6.5

( . 6.5.1).



. 6.5.1.

7

?

7.1

SoftIce

[support@aggsoft.ru](mailto:support@aggsoft.ru)