



Advanced TCP/IP Data Logger

<b>1</b>		<b>1</b>
1	Advanced TCP/IP Data Logger .....	1
2	.....	2
<b>2</b>		<b>4</b>
1	.....	4
2	.....	5
3	.....	5
4	.....	6
<b>3</b>		<b>6</b>
1	.....	6
2	.....	6
<b>4</b>		<b>7</b>
1	.....	7
2	.....	8
3	.....	10
4	.....	11
5	.....	11
<b>5</b>		<b>12</b>
1	.....	12
	TCP/IP .....	12
2	.....	18
	.....	18
	.....	20
	.....	22
3	- .....	23
	- .....	23
	- .....	26
	.....	28
4	.....	29
	.....	29
	OPC .....	33
5	.....	37
	.....	37
	.....	39
	.....	40
	Windows 2000 .....	41

Window s Vista ..... 44  
..... 45

**6**

**?**

**46**

1

..... 46

# 1

## 1.1 Advanced TCP/IP Data Logger

Advanced TCP/IP Data Logger  
Excel, Access,  
Logger

TCP/IP  
Windows. Advanced TCP/IP Data  
Ethernet.

TCP UDP

Advanced TCP/IP Data Logger

SCADA  
(Dynamic Data Exchange) OPC

DDE  
ODBC,

### Advanced TCP/IP Data Logger:

- 
- 
- ( ASCII)
- 
- 
- 
- 
- ODBC- (MS SQL, Oracle, MS  
Access, MS Excel, dBASE ).  
MS Access) " (MS Excel,
- Advanced TCP/IP Data Logger DDE OPC ;
- Advanced TCP/IP Data Logger ( OLE) Microsoft Excel ;
- 
- 
- 
- 
- Windows 2000+, x86 x64.

Advanced TCP/IP Data Logger

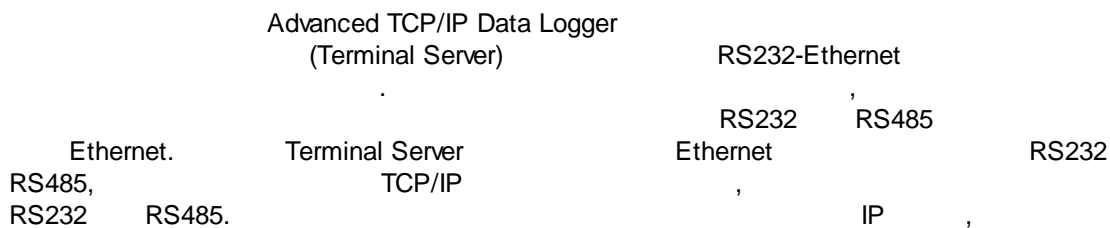
ASCII MODBUS.

Advanced TCP/IP Data Logger,

Advanced TCP/IP Data Logger

Windows 2000+,

Advanced TCP/IP Data Logger



- 
- 
- 
- 
- 
- 
- 
- 
- 
- 
- 

: <http://www.aggsoft.ru/>  
 : <http://www.aggsoft.ru/tcpip-data-logger.htm>

## 1.2

ASCII - ASCII -  
 Windows  
 ASCII. ASCII \*.TXT (  
 README.TXT).

**Binary File** - , ASCII ( 0 255).

**Bytes** ( ) - , .

**Bit** ( ) - : 0 1. 8  
8 ( ) .

**Cable** ( ) - , .

**Client/Server** ( / ) - , ( , , . . )  
( ) .

**DNS (Domain Name System)** - DNS  
( TCP/IP ) IP . DNS  
198.63.211.24. www.aggsoft.com

**Internet** ( ) - , TCP/IP .

**IP, Internet Protocol** ( ) - Internet Protocol,  
TCP/IP, IP IP ,  
'xx.xx.xx.xx'.

**IP ( Internet Protocol)** - , TCP/IP.  
IP , , . IP  
: 198.63.211.24.

**LAN (Local Area Network)** - .

**NIC, Network Interface Card** ( ) - , ,  
( PCI, turbochannel,  
nuBus, . ) ( , 10baseFL).

**PC** ( ) - Personal Computer ( ) .

**Ports** ( ) - .

**Protocol** ( ) - .

**TCP/IP, Transport Control Protocol / Internet Protocol** - TCP IP , .

TCP/IP  
Internet.

(Log file) - ( . log) —

## 2

### 2.1

Copyright © 1999-2019 AGG Software.  
All Rights Reserved

1. Advanced TCP/IP Data Logger -
- 2.
3. Advanced TCP/IP Data Logger ,
- 4.
5. Advanced TCP/IP Data Logger sales@aggsoft.ru
6. Advanced TCP/IP Data Logger , ,  
Advanced TCP/IP Data Logger
7. **Advanced TCP/IP Data Logger** "AS IS".
- 8.

9. Advanced TCP/IP Data Logger

10. -  
Advanced TCP/IP Data Logger  
Advanced TCP/IP Data Logger.

## 2.2

shareware-

5

- 21
- 

## 2.3

shareware-

4

Internet,



## 2.4

Advanced TCP/IP Data Logger	<a href="mailto:support@aggsoft.ru">support@aggsoft.ru</a>
	<a href="mailto:support@aggsoft.ru">support@aggsoft.ru</a>
	<a href="mailto:sales@aggsoft.ru">sales@aggsoft.ru</a>

## 3

### 3.1

- Windows 2000 SP 4 - Windows 10 ( x86 x64, ).

### 3.2

Advanced TCP/IP Data Logger.

, Advanced TCP/IP Data Logger  
Files\Advanced TCP/IP Data Logger"

"\Programs

Advanced TCP/IP Data Logger

## 4

## 4.1

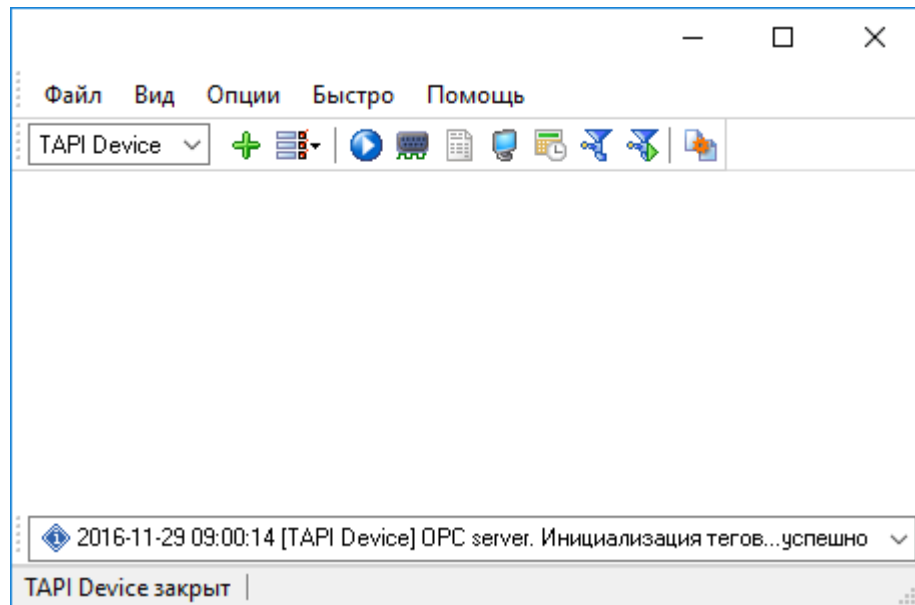
## Advanced TCP/IP Data Logger

Advanced TCP/IP Data Logger

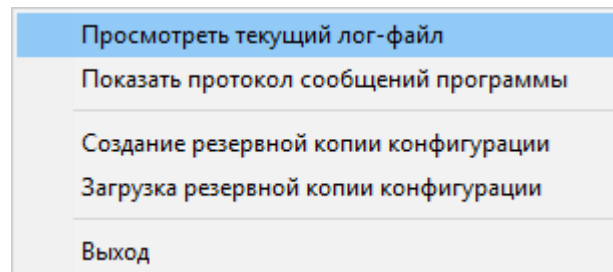
" "

(. 1.1.1),

1.1.2)



. 1.1.1.



. 1.1.2.

" "

C:\. ,  
8

### 1-2-3-4

1.

" " .  
12 " IP"

2.

( ).  
" " ( .  
).

3.

, 29  
" " " , , ,  
, , .

4.

Advanced TCP/IP Data Logger ,  
Advanced TCP/IP Data Logger , ,

## 4.2

(NIC).

- Advanced TCP/IP Data Logger IP (NIC),  
Advanced TCP/IP Data Logger IP
- Advanced TCP/IP Data Logger DHCP, IP  
IP

• , IP 0.0.0.0.

" [TCP/IP](#) [12]".

- - ,

- [23]

- ,

[26] - .

( [. 1.1.1](#) [7]).

" [18]",

Advanced TCP/IP Data Logger [37].

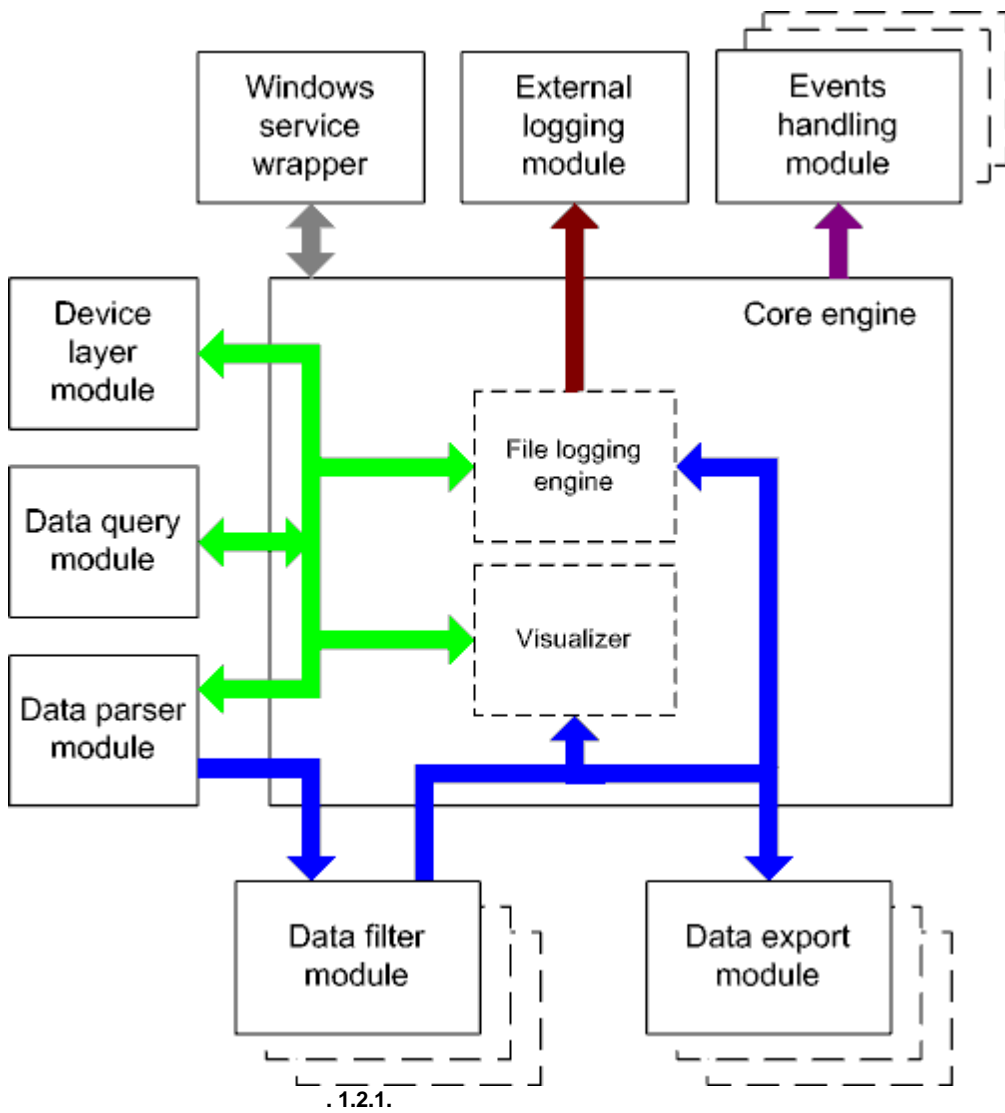
-

Advanced TCP/IP Data Logger. [29] (plug-ins),

" [29]".

[40] ( [. 1.1.1](#) [7] )

4.3



- - ( )
- - ( )

- Core engine -
- Device layer module -
- Data query module -
- Data parser module -
- Data filter module -
- Data export module -
- Visualizer -
- File logging engine -
- Windows service wrapper -
- External logging module -
- Events handling module -

## 4.4

Windows. / COM-

## 4.5

1.

2.

1.

2.

regedit.exe

Windows x64

HKEY\_LOCAL\_MACHINE\SOFTWARE\Wow6432Node\AGG Software\Advanced TCP/IP Data  
Logger

Windows x32

HKEY\_LOCAL\_MACHINE\SOFTWARE\AGG Software\Advanced TCP/IP Data Logger

3.

:  
Ctrl+S -  
Ctrl+D -  
Ctrl+P -

Ctrl+L - log- ;  
Ctrl+R - ;  
Ctrl+E - Windows;  
Ctrl+M - , .

4. ,  
. .: -

5. INI .  
" "

6. 10 ,  
: -

# 5

## 5.1

### 5.1.1 TCP/IP

#### UDP TCP

(User Datagram Protocol). TCP TCP (Transport Control Protocol) UDP

, , IP. TCP ,  
TCP , TCP  
, UDP , TCP  
UDP

UDP ,  
TCP, UDP IP TCP, UDP

Messaging, UDP IP Instant

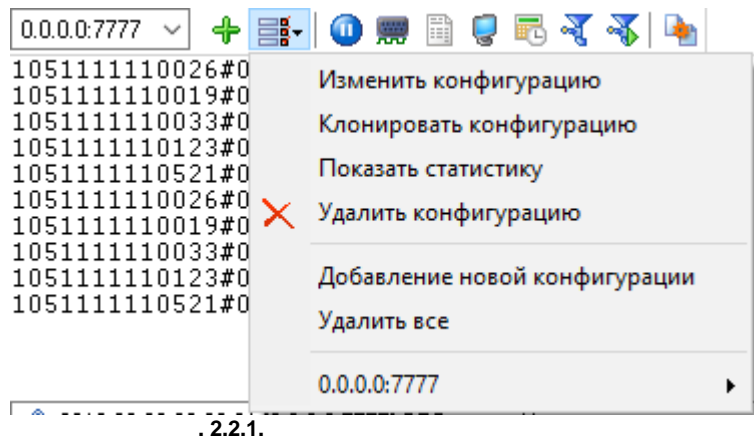
Advanced TCP/IP Data Logger

```

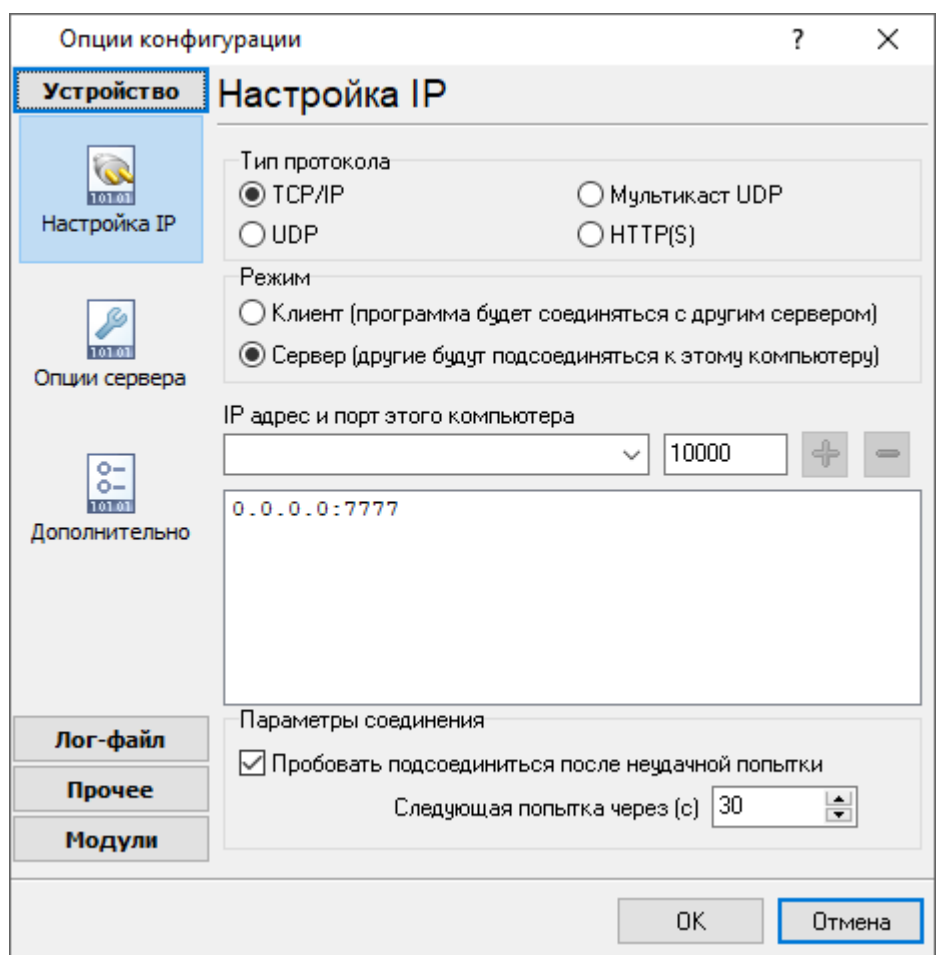
TCP/IP
(
TCP/IP) Advanced TCP/IP Data Logger
:
1.
TCP/IP,
Advanced TCP/IP Data Logger
( www.yourserver.com)
"Plant1"
IP
Advanced TCP/IP Data Logger
IP
"Plant1",
IP
2.
IP ;
IP
Advanced TCP/IP Data Logger
(NIC),
IP
Advanced TCP/IP Data Logger
IP
Microsoft Windows, TCP/
IP
IP
IP
"OK"
Advanced TCP/IP Data Logger TCP/IP.
IP
Advanced
TCP/IP Data Logger
Advanced TCP/IP Data Logger
( . 1.1.1 | 7 ).
( . 1.1.1 | 7 )
" "
( . 2.2.2).
IP"
TCP/IP
" " ( . 2.2.1).

```





TCP/IP: IP " IP  
" "



. 2.2.2. TCP/IP

IP , , .  
 SMTP - 25, the telnet - 23, NNTP -  
 119, . . .  
 SERVICES, Windows ( Windows NT  
 WINNT\SYSTEM32\DRIVERS\ETC). SERVICES -  
 Advanced TCP/IP Data Logger  
 ( , )  
 ( , ).

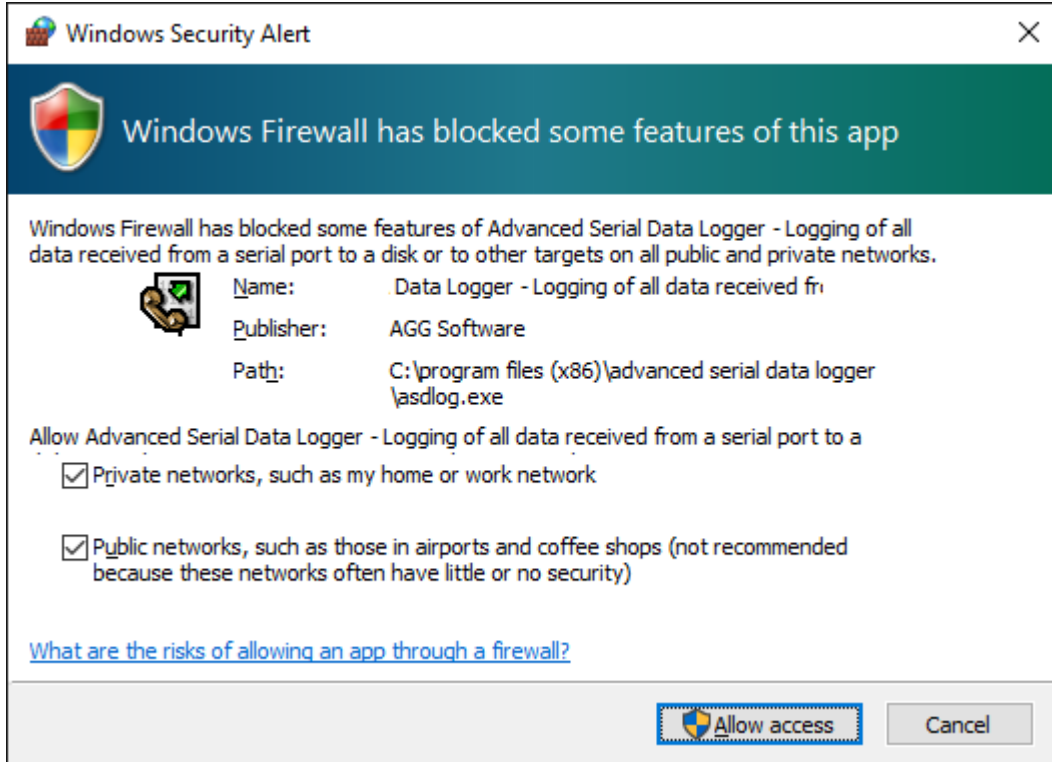
IP (socket).  
 IP  
 " " IP  
 ( IP ).

(  
 ) ( ) "  
 ", Advanced TCP/IP Data Logger  
 (c)". N , "

**IP**  
 IP ,  
 Advanced TCP/IP Data Logger - IP  
 " " .

**(firewall)**

Data Logger . Microsoft Windows XP SP2 , Advanced TCP/IP  
 . Windows Firewall, ,  
 . Windows Firewall ,  
 (Security Alert).



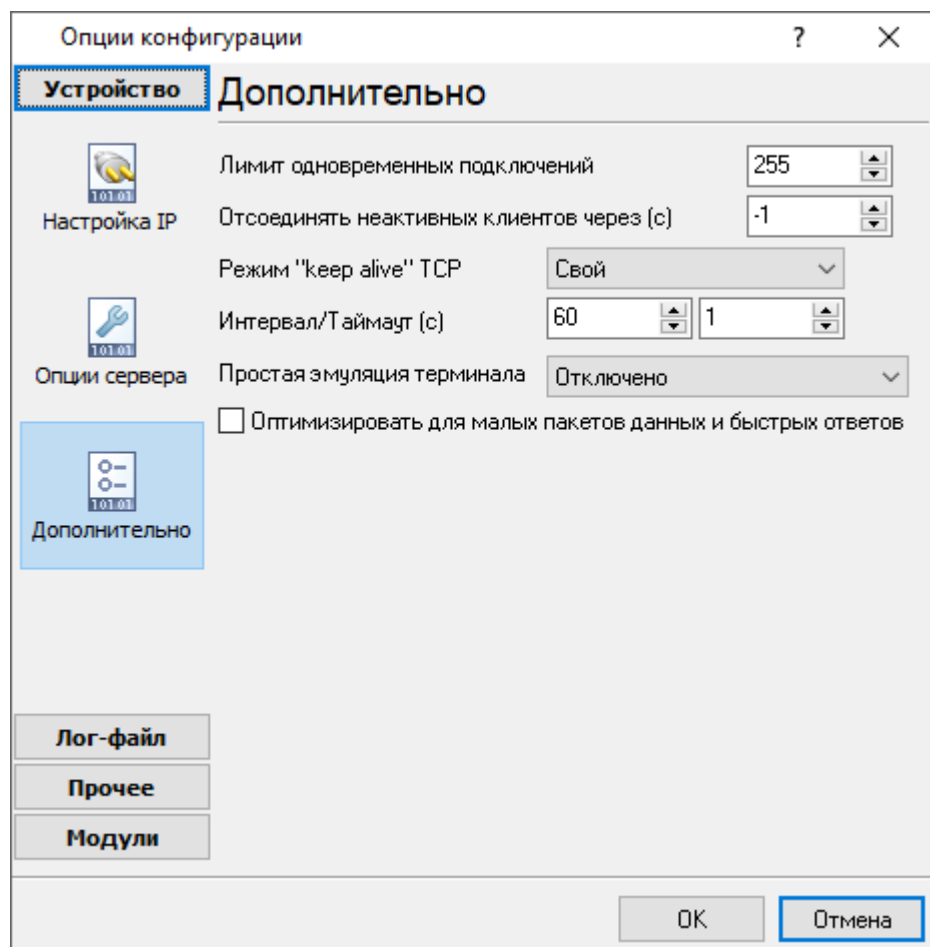
. 2.2.3.

• ;  
 • ;  
 • ;  
 .  
 :  
 .  
 " " TCP/IP ( .  
 2.2.4).

"TCP/IP" :

( ) -

"-1",



. 2.2.4.

TCP/IP

:

keep-alive TCP ( ) -

keep-alive,

Windows.

: keep-alive

(TCP

UDP):

## 5.2

### 5.2.1

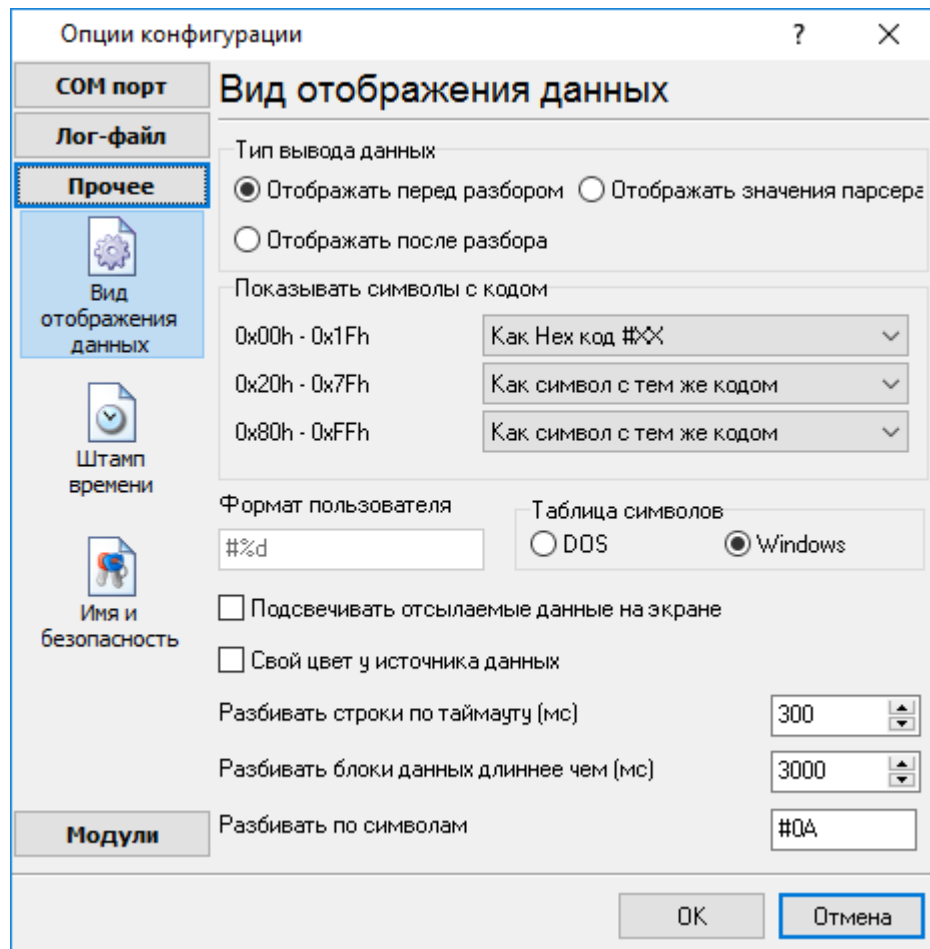
([1.1.1.1](#) 7)

2

( 3.1.1):

1.

2.



. 3.1.1.

" - " ( . 3.1.1)

Hex-

,%d

,%x -

(OEM).

: Windows DOS

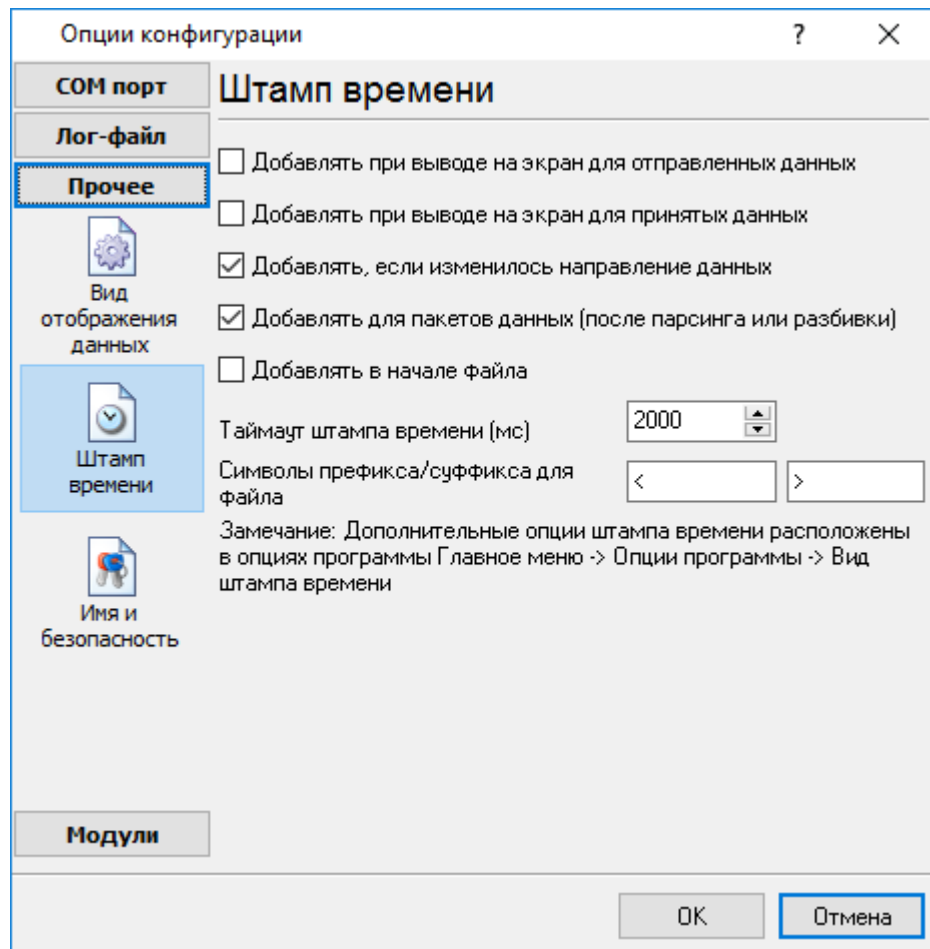
- ,  
.  
- ,  
, 0,  
- ,  
0,  
- ,  
,  
,  
, . 3.1.1

**5.2.2**

( . 3.2.1)

( )

           39.



. 3.2.1.



:>#0D#0A

### 5.2.3

( . 3.3.1)

:

-

.

-

,

"

"

,

,

45

"

/

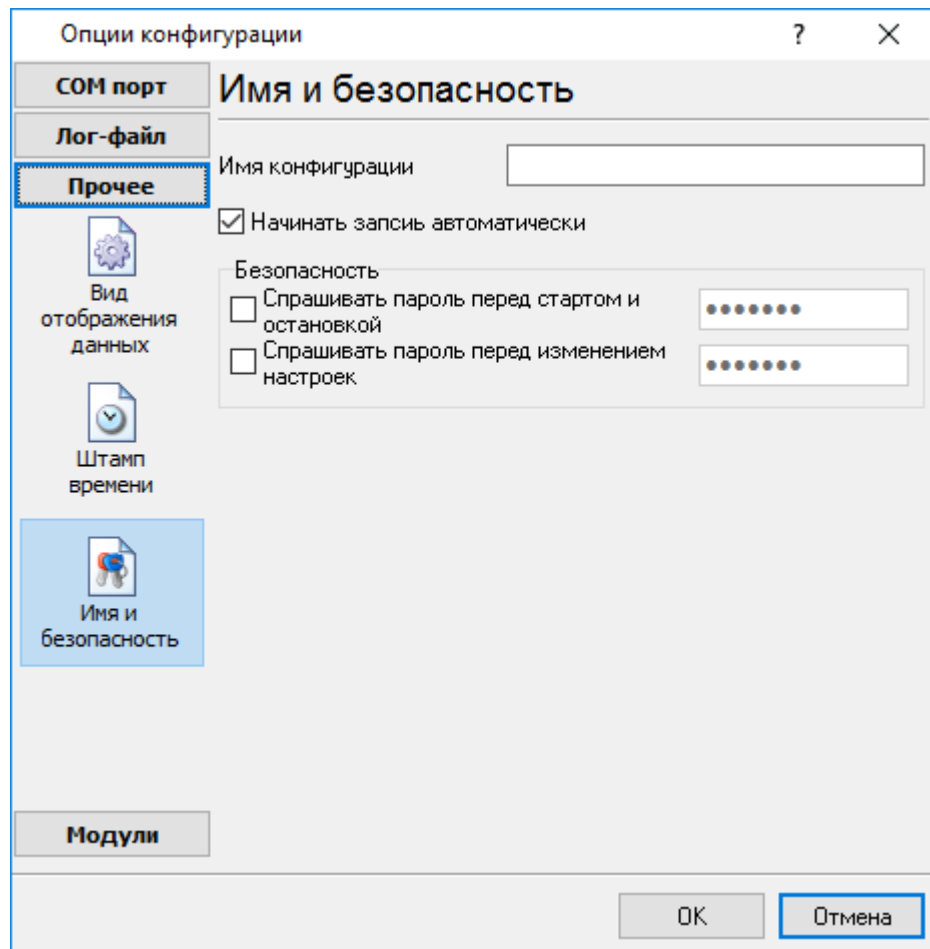
"

-

,

-

,

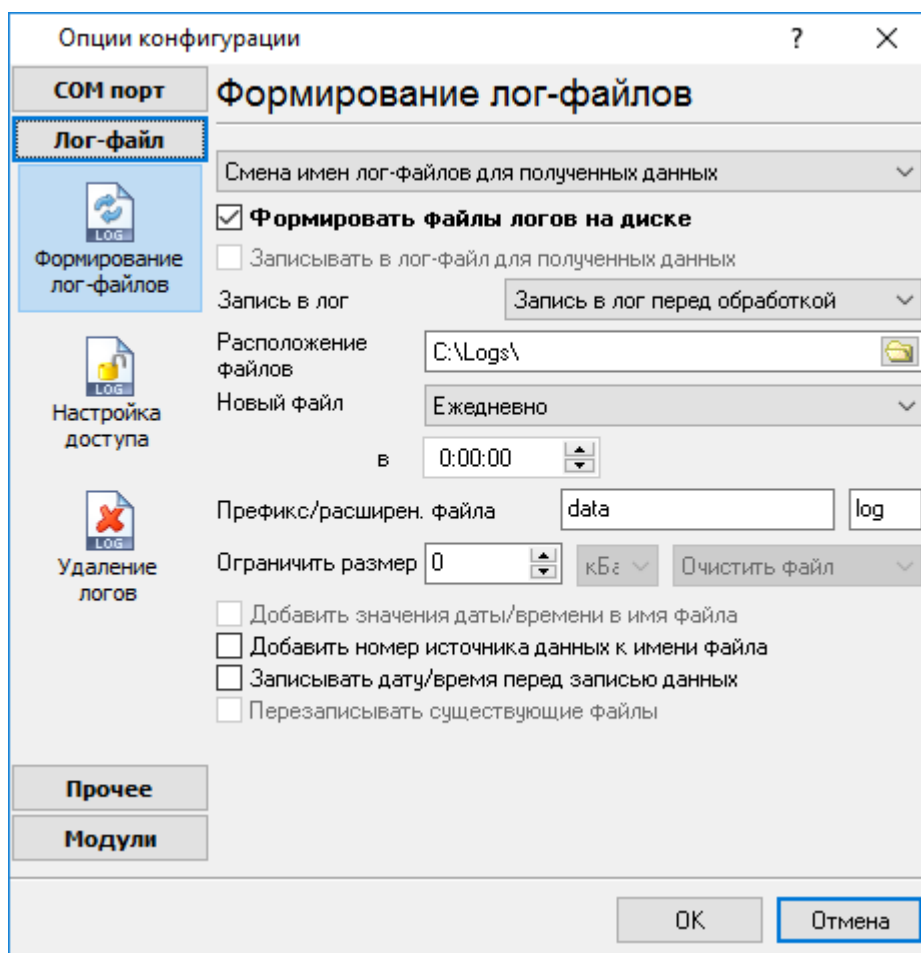


. 3.3.1.

## 5.3

### 5.3.1

( . 4.1.1).



. 4.1.1.

Advanced TCP/IP Data Logger

```

"sampleYYYYMMDD.log". 21-
2003 - "sample20030321.log".
.
( ).
, , , .
" " :
1. - , .
DDMMYYYY, DD - , MM -
YYYY - ;
2. - . MMYYYY;
3. - YYYMMDD;
4. -
sample00000001.log. -
5. ;
6. - ; WWYYYY, WW -
, YYYY -
7. ;
8. - ; HHDDMMYYYY;
9. - -
, .
:
d - , (1 - 31);
dd - , (01 - 31);
ddd - ( - ) ,
;
dddd - ( - )
, ;
m - , (1 - 12);
mm - , (01 - 12);
mmm - ( - ) ,
;
mmmm - ( - ) ,
;
yy - (00 - 99);
yyyy - (0000 - 9999);

```

```

h - , (0 - 23);
hh - , (00 - 23);
n - , (0 - 59);
nn - , (00 - 59);
s - , (0 - 59);
ss - , (00-59).

```

```

: "sample_log", "txt".
: = sample_log_, = txt ( !).
HHDDMMYYYY.

```

4 7

/

sample20030321.log.

, COM1-

/

4 7.

"

"

1.

2.

3.

( ) -

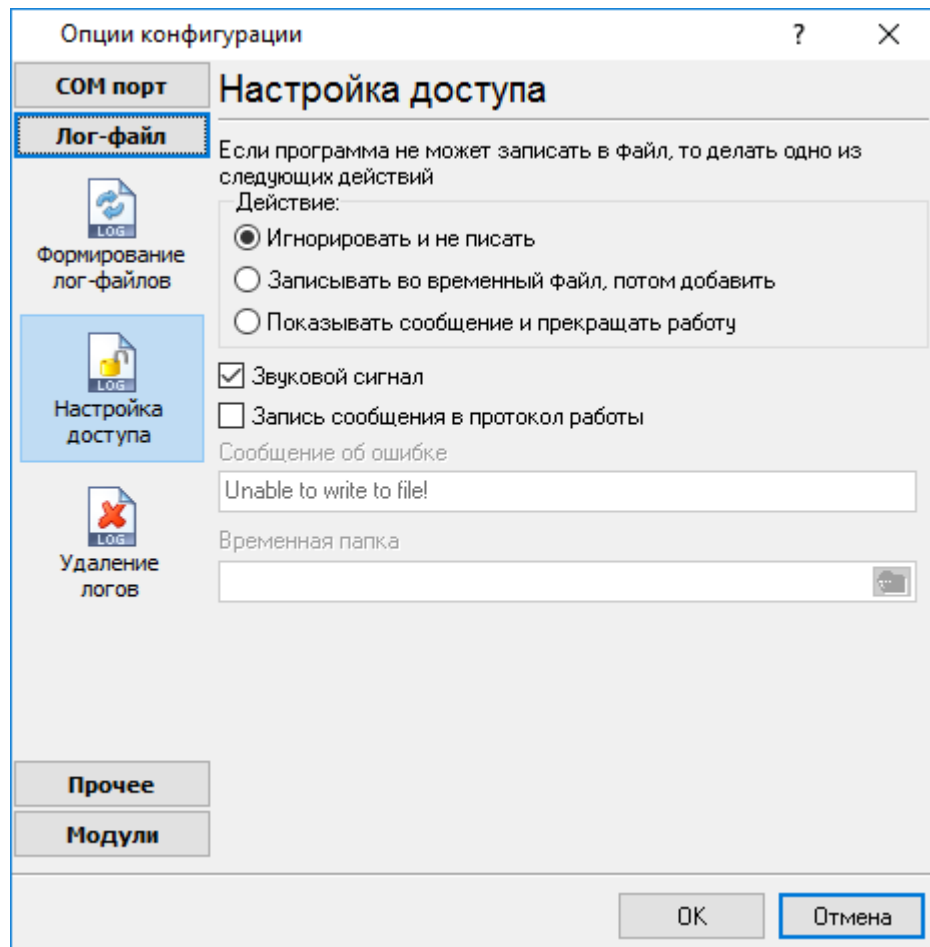
4.

( ).

### 5.3.2

Office ( , Microsoft Word),  
TCP/IP Data Logger

Microsoft  
Advanced



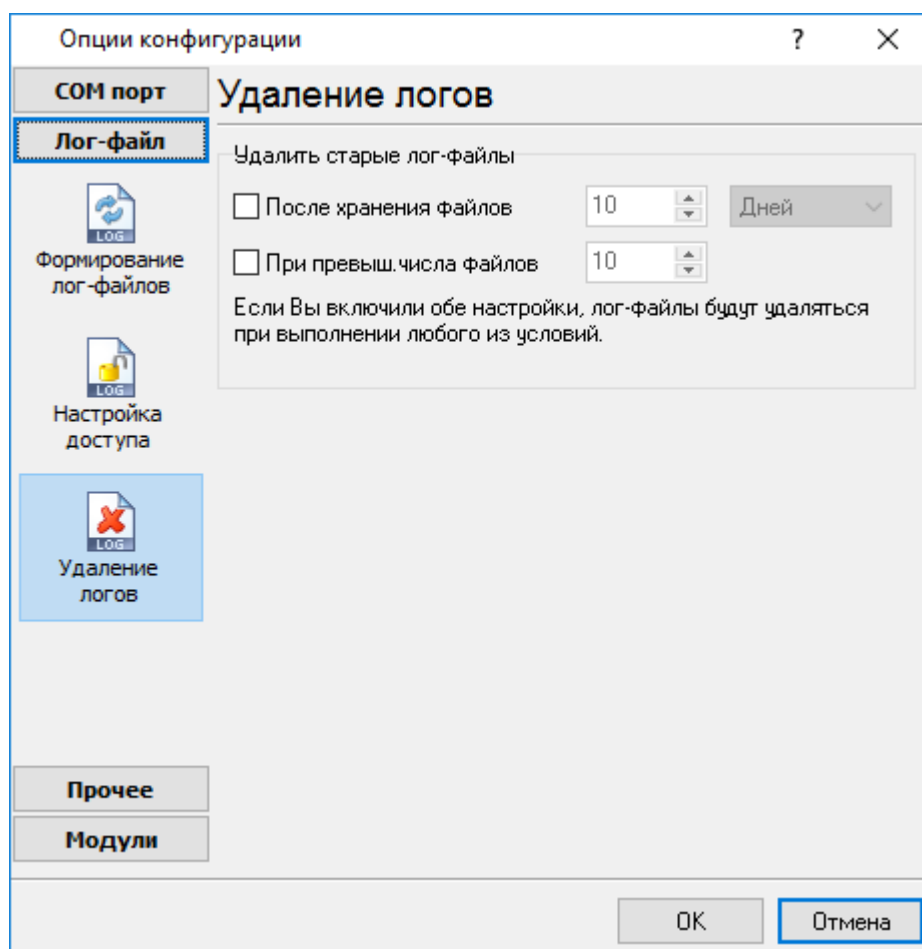
. 4.2.1.

Advanced TCP/IP Data Logger  
( . 4.2.1),

- 
- 
-

## 5.3.3

(рис. 4.3.1).



. 4.3.1.

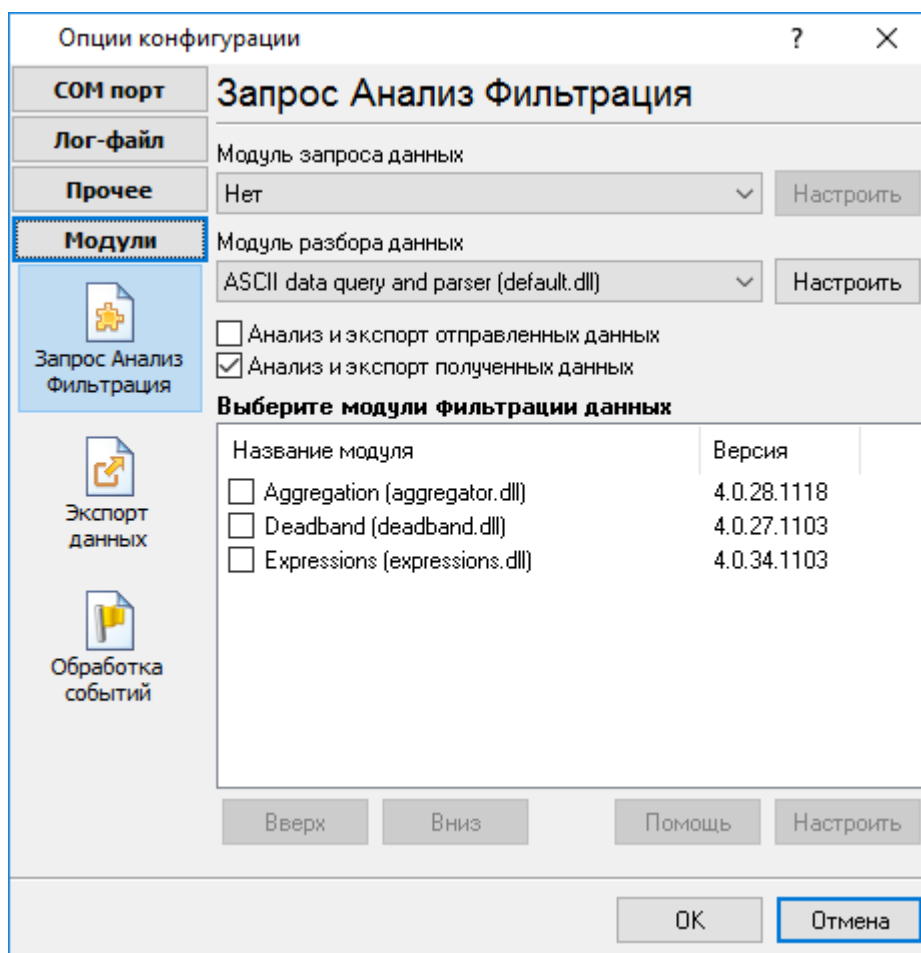
## 5.4

### 5.4.1

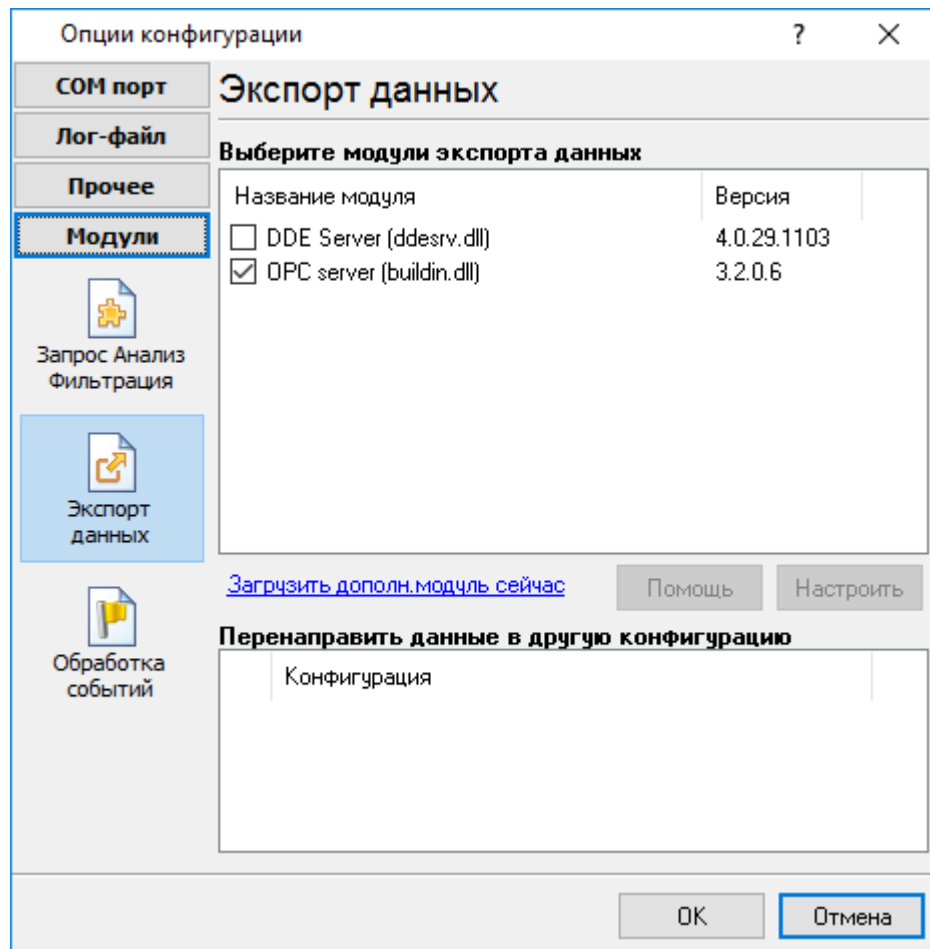
Advanced TCP/IP Data Logger :

- -
- ; ( , , ) - ( )
- - ;
- - ;
- , Excel ;
- ( . 5.1.3) - Advanced TCP/IP Data Logger. , " - " "

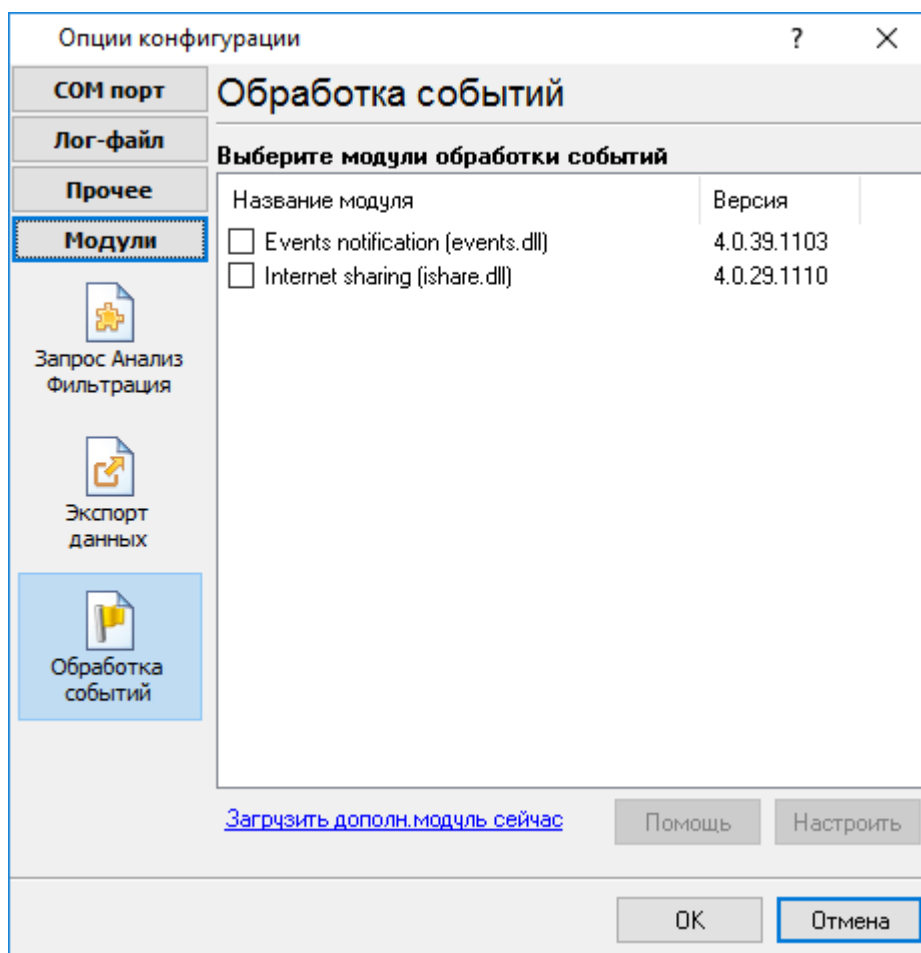




. 5.1.1.



. 5.1.2.



. 5.1.3.

"OK".

## 5.4.2 OPC

Advanced TCP/IP Data Logger

OPC.

Data Logger

OPC

Advanced TCP/IP

( 5.2.1).

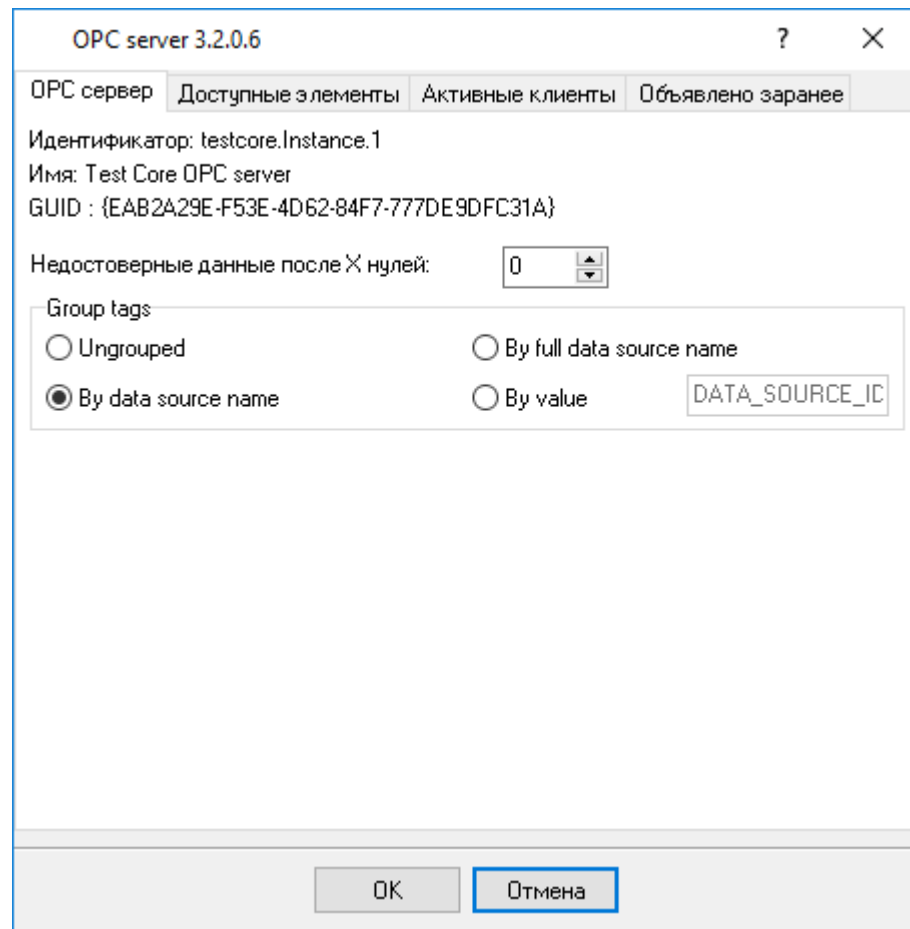
OPC

OPC Core Components Redistributable

[www.opcfoundation.org](http://www.opcfoundation.org) (

OPC

OPC



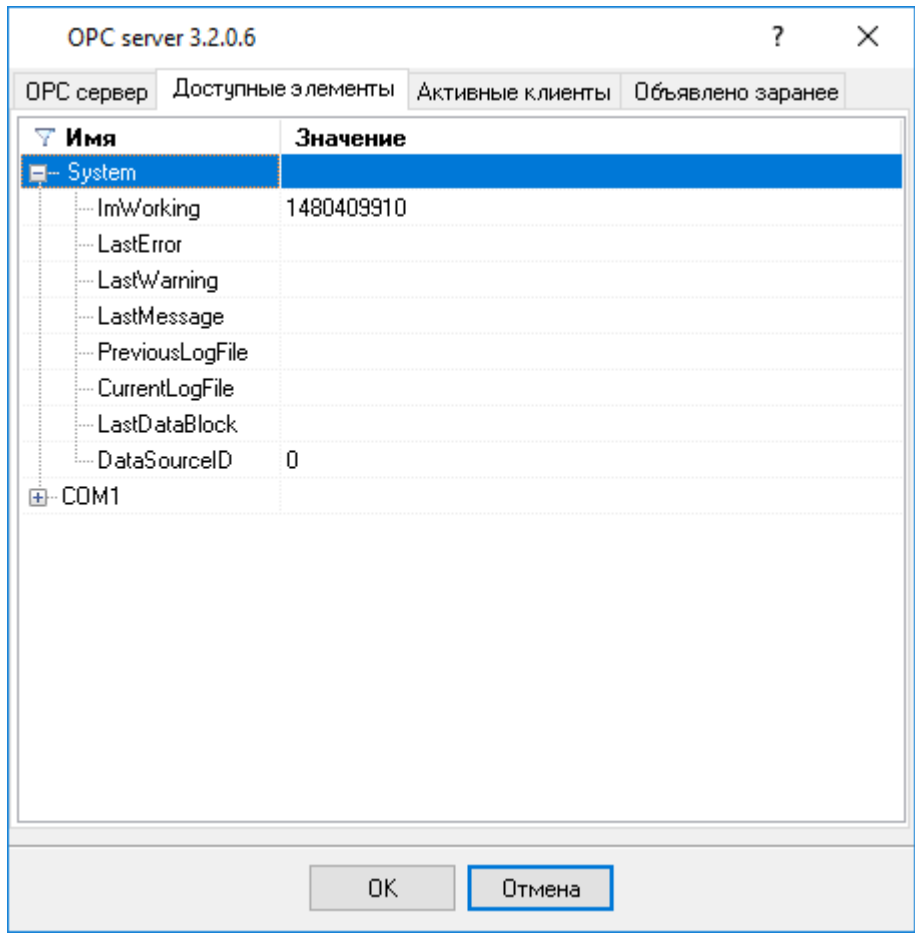
. 5.2.1.

OPC

Advanced TCP/IP Data Logger,

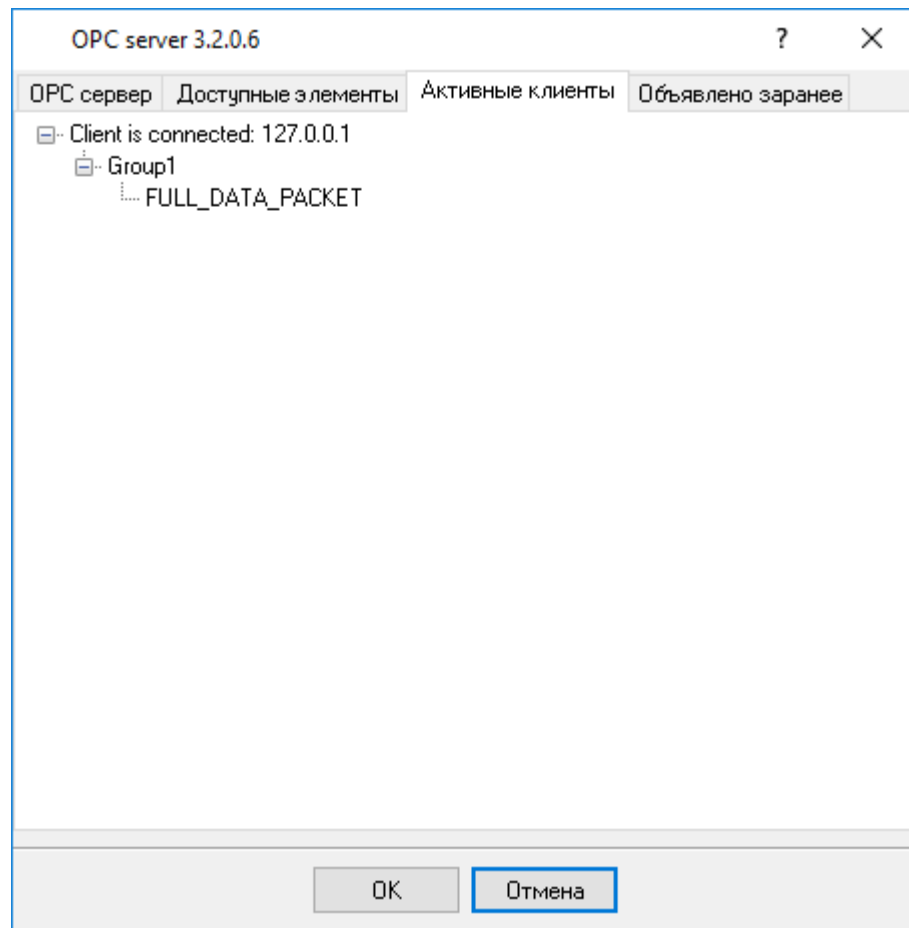
OPC ( .2).

OPC



. 5.2.2.

OPC



. 5.2.3.

Advanced TCP/IP Data Logger

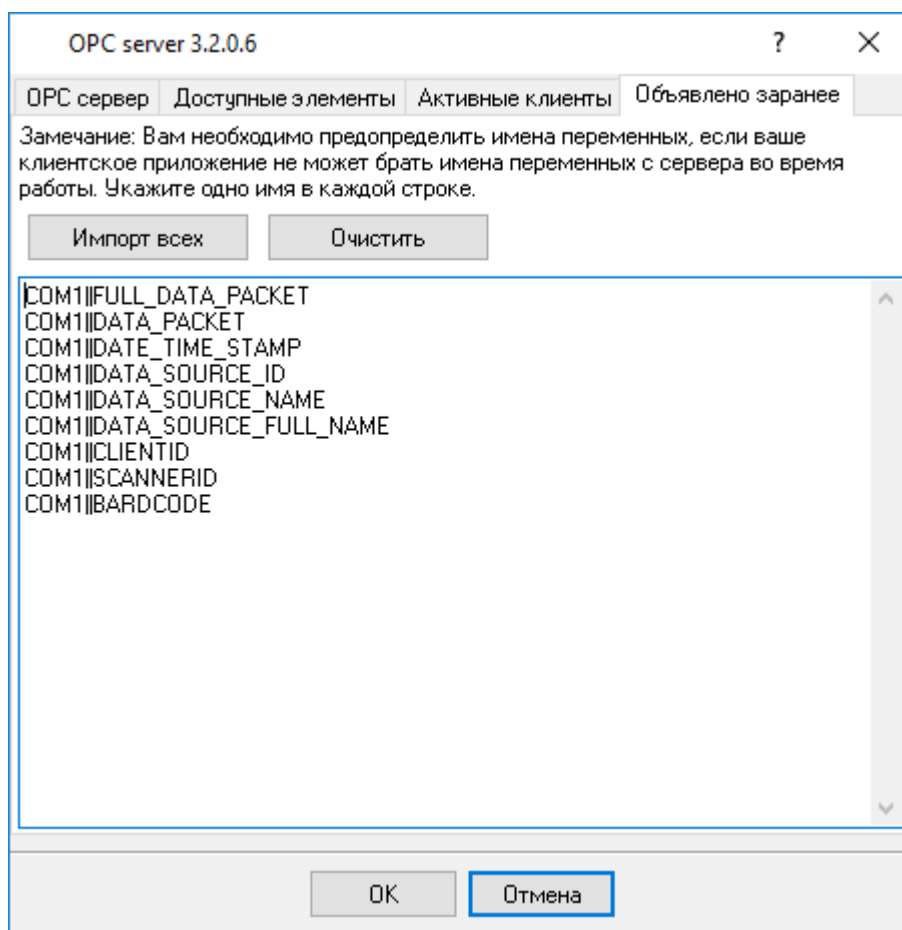
"

". Advanced TCP/IP Data Logger

OPC

( .4).

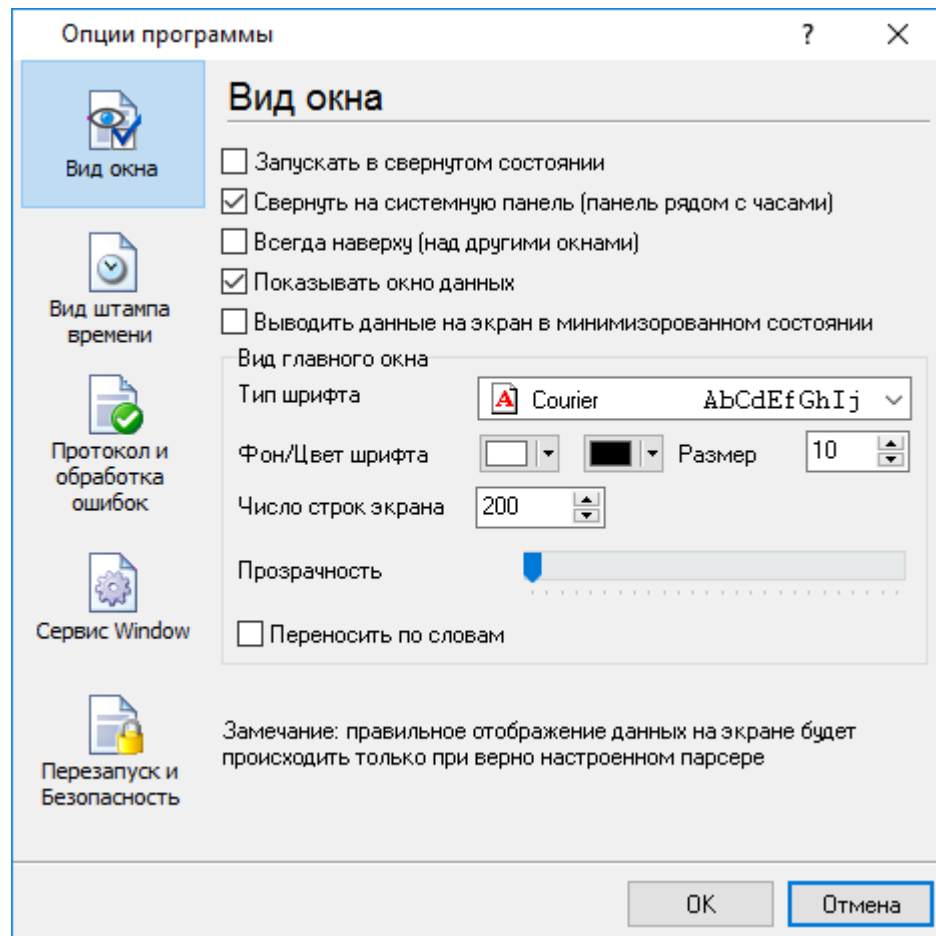
OPC  
OPC



. 5.2.4.

## 5.5

## 5.5.1

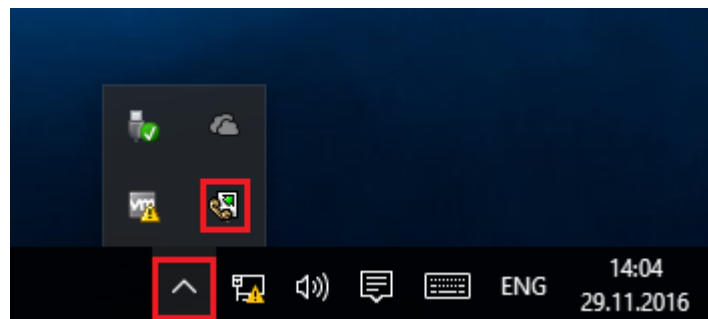


. 6.1.1.

" ( . 6.1.1) :

- Advanced TCP/IP Data Logger

( . 6.1.2) ;





. 6.1.2.

-

( . 6.1.2) -

Advanced TCP/IP Data Logger

;

-

;

- /

.

.

-

,

;

);

-

( , ,

;

- Windows 2000

,

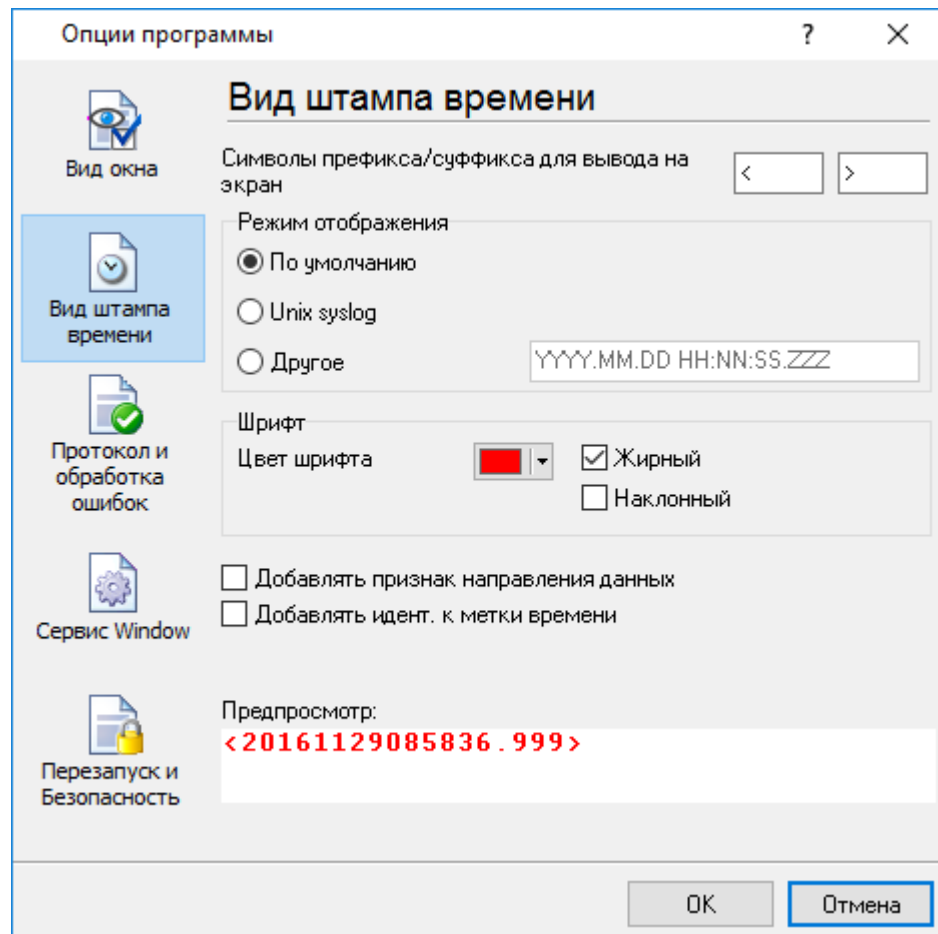
-

,

.

## 5.5.2

( . 6.2.1)



. 6.2.1.

/

20

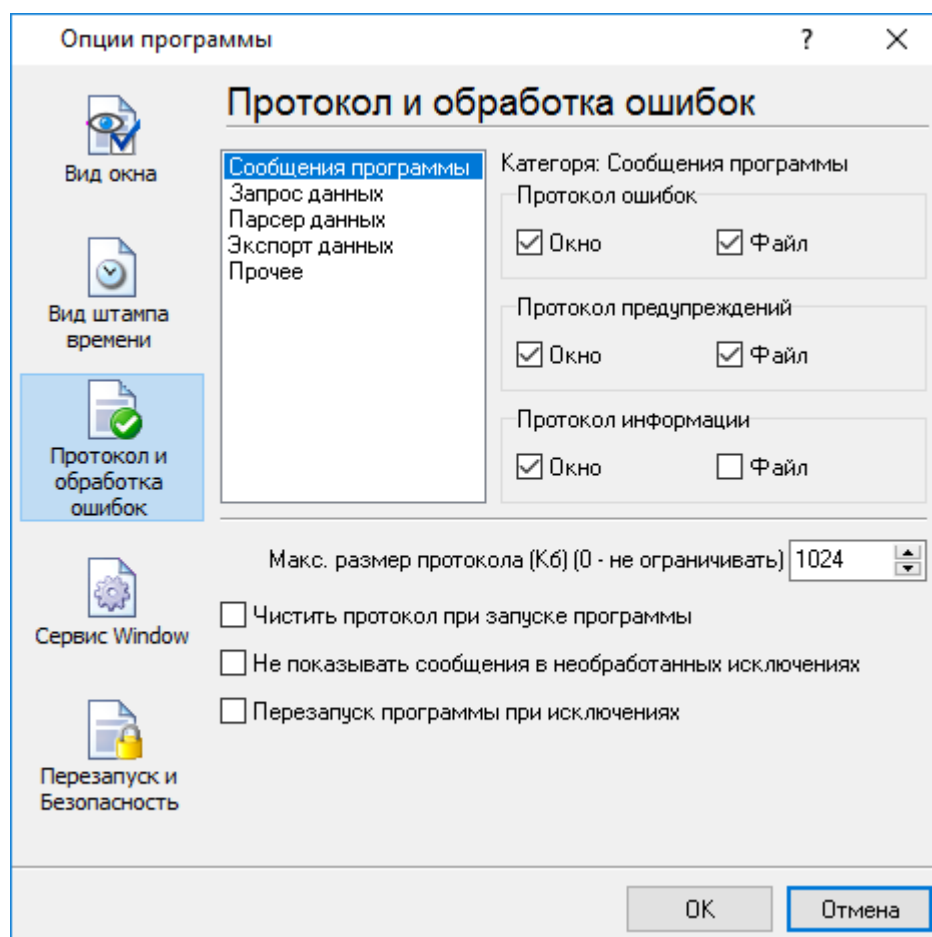
TX

RX

, COM1.

## 5.5.3

.log.



. 6.3.1.

Advanced TCP/IP Data Logger

3-

- ;
- ;
- ;

Advanced TCP/IP Data Logger

5.5.4  
5.5.4.1

Windows 2000

( ) Windows :

2000 );

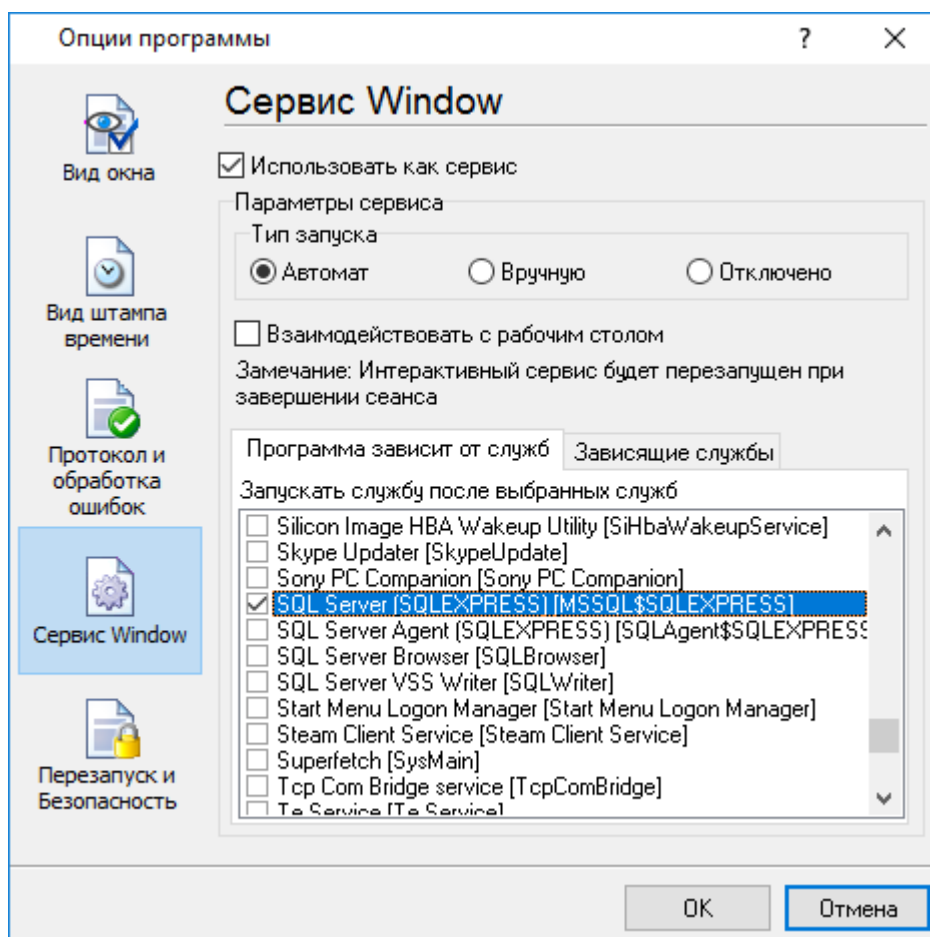
Windows

( );

Windows Vista

(elevated)

Windows" ( . 6.4.1).



. 6.4.1.

1. - Windows
  2. - ; " " ;
  3. - .
- "
- " ( . 6.4.2).
- " , . . Windows

44

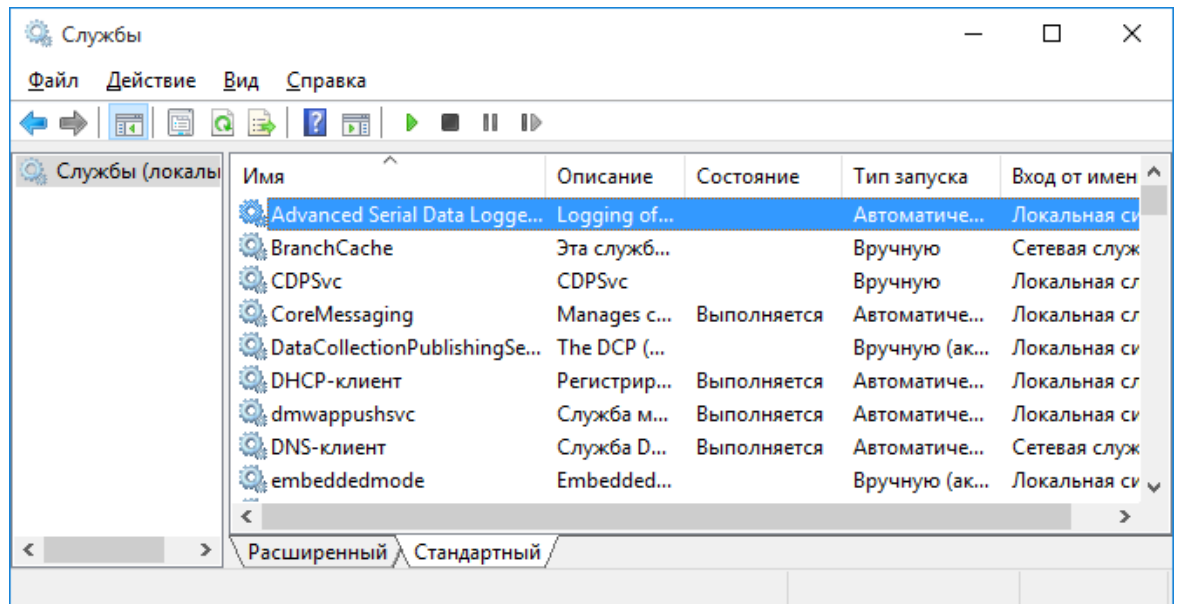
Windows Vista



. 6.4.2

Advanced TCP/IP Data Logger, " ( . 6.4.1)

( . 6.4.3).

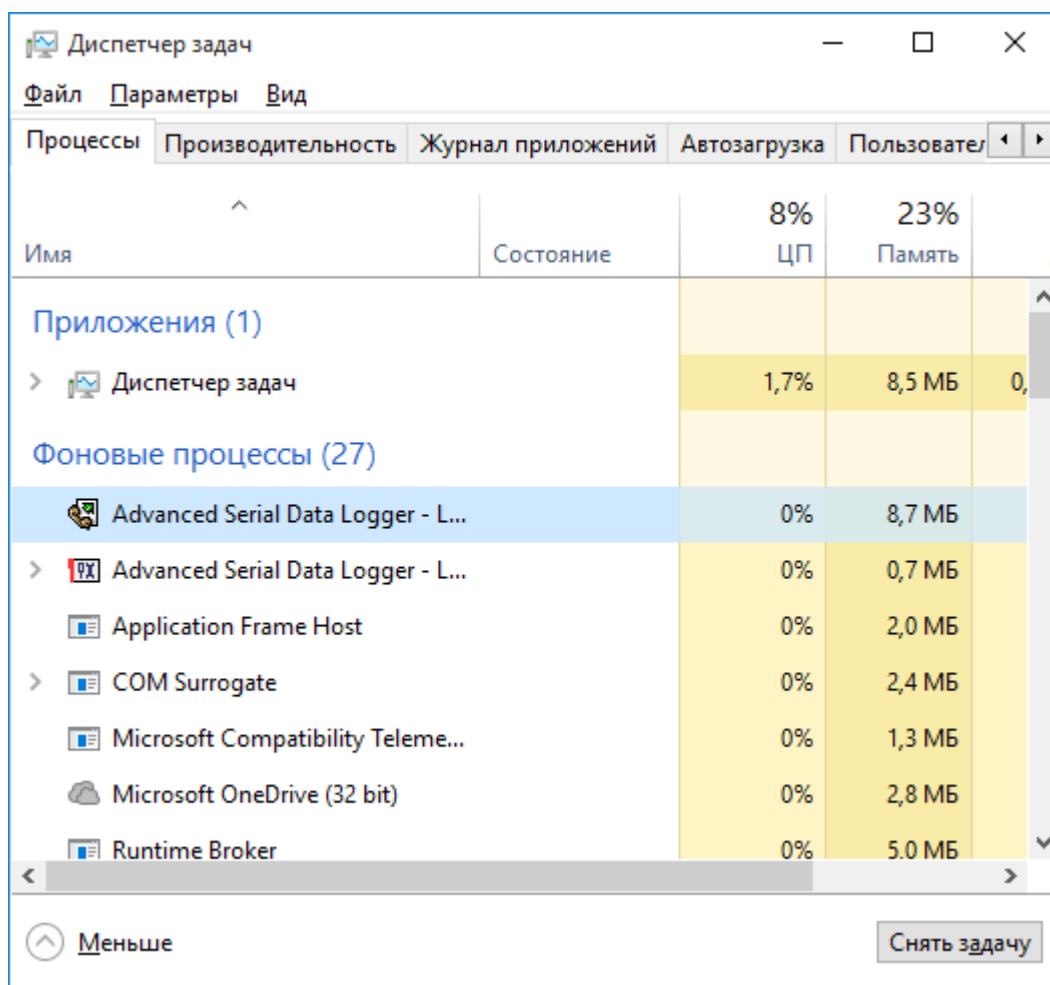


. 6.4.3.

( Windows 2000)

( . 6.4.4). Advanced TCP/IP Data Logger 2 - aipdlogsv.exe aipdlog.exe

Advanced TCP/IP Data Logger,  
svany.exe



. 6.4.4.

apidlogsvr.exe :

- /? - ;
- /I - ;
- /A - ;
- /D - ;
- /R -

#### 5.5.4.2

#### Windows Vista

Windows Vista

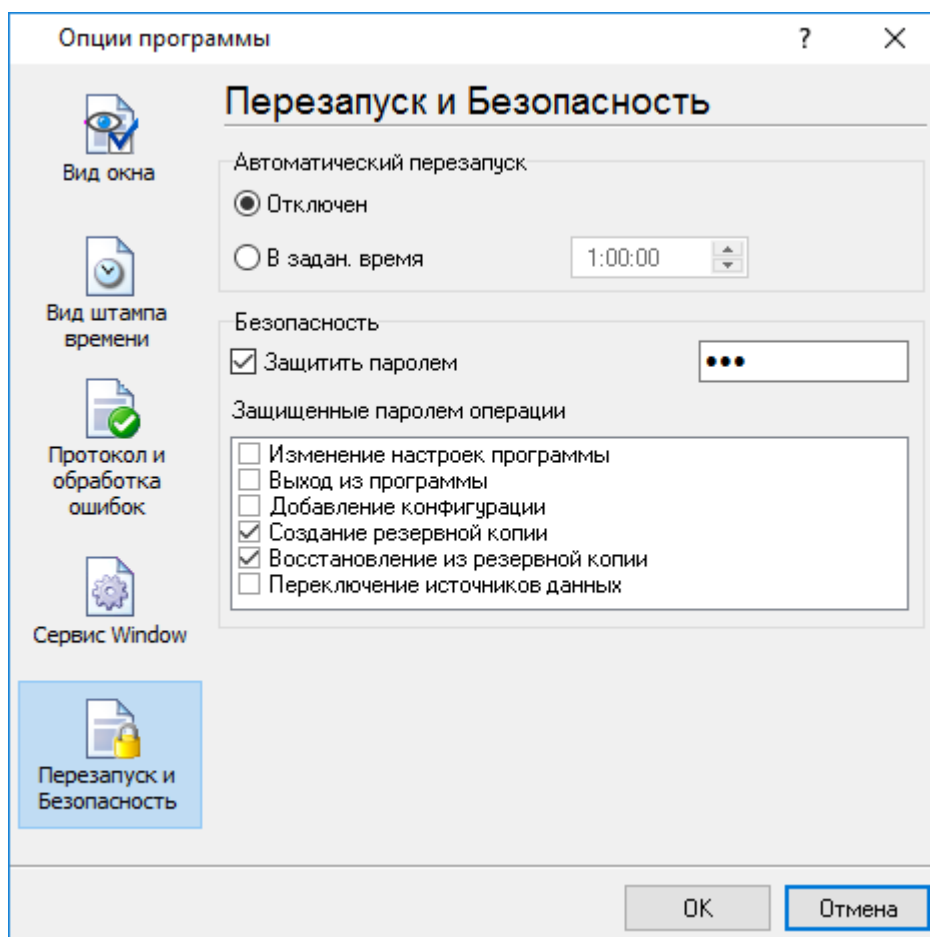
Windows.

- : Interactive Services Detection
  - : UIODetect
  - : UIODetect.exe
  - :
  - : %windir%\system32\UIODetect.exe
  - :
- \* Home Basic:  
\* Home Premium:  
\* Business:  
\* Enterprise:  
\* Ultimate:

## 5.5.5

( . 6.5.1).





. 6.5.1.

" "

6

?

6.1

SoftIce

[support@aggsoft.ru](mailto:support@aggsoft.ru)